

SIBLEY MEMORIAL HOSPITAL

GRAND OAKS ASSISTED LIVING FACILITY

Mark W. Miller

The Pennsylvania State University

Architectural Engineering

Lighting/Electrical Option

Faculty Advisor: Dr. Mistrick



Grand Oaks Assisted Living Facility

Building Overview

- **Location:** Loughboro Road, Washington, D.C.
- **Size:** 123,000 square feet + 67,000 sq. ft. addition
- **Owner:** Sibley Memorial Hospital
- **Occupancy type:** Older Adults – 80+ years of age



Visibility Issue with Older Adults

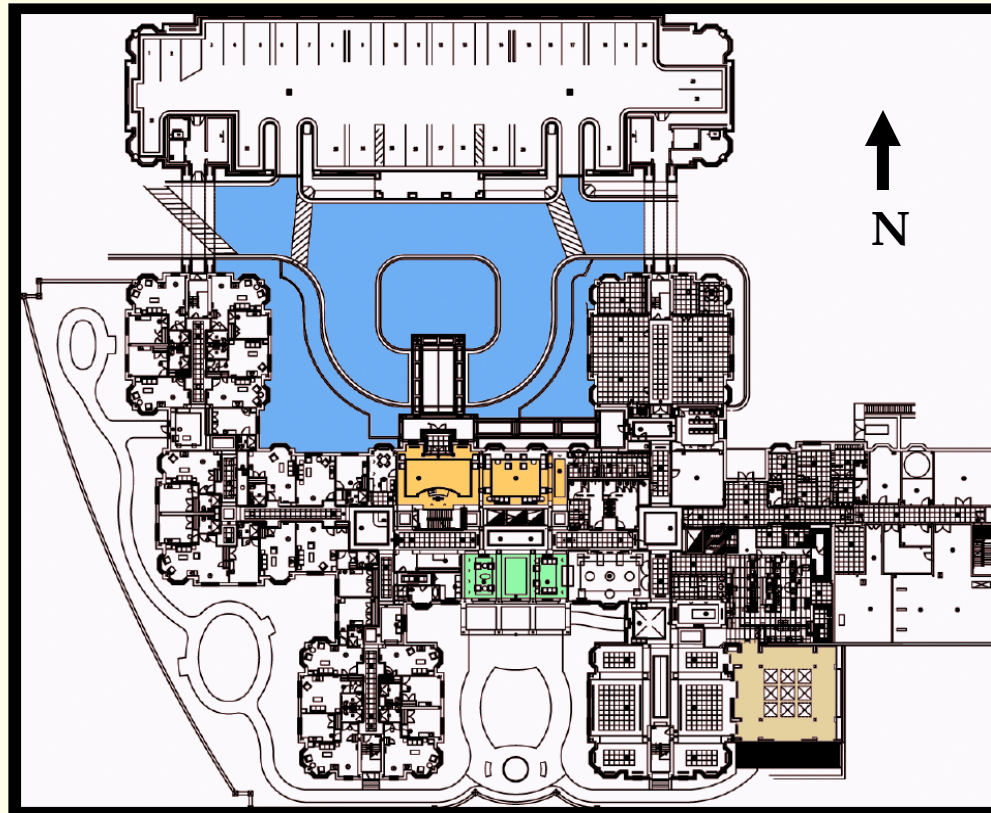
- pupils become smaller – 33% less light reaches retina after age 65
- require higher illuminance levels
- floaters – scattering of light within eye
- increased sensitivity to glare
- decreased contrast sensitivity
- decrease in adaptation time
- altered color perception

Design Goals for all spaces

- provide comfortable home like atmosphere
- avoid glare – direct and reflected
- uniformity in general lighting
- balance of daylight and interior ambient light
- avoid strong contrast ratios

Grand Oaks Assisted Living Facility

Spaces to be redesigned



■ Outdoor Entry and Walkway

■ Lobby

■ Living Room/Library

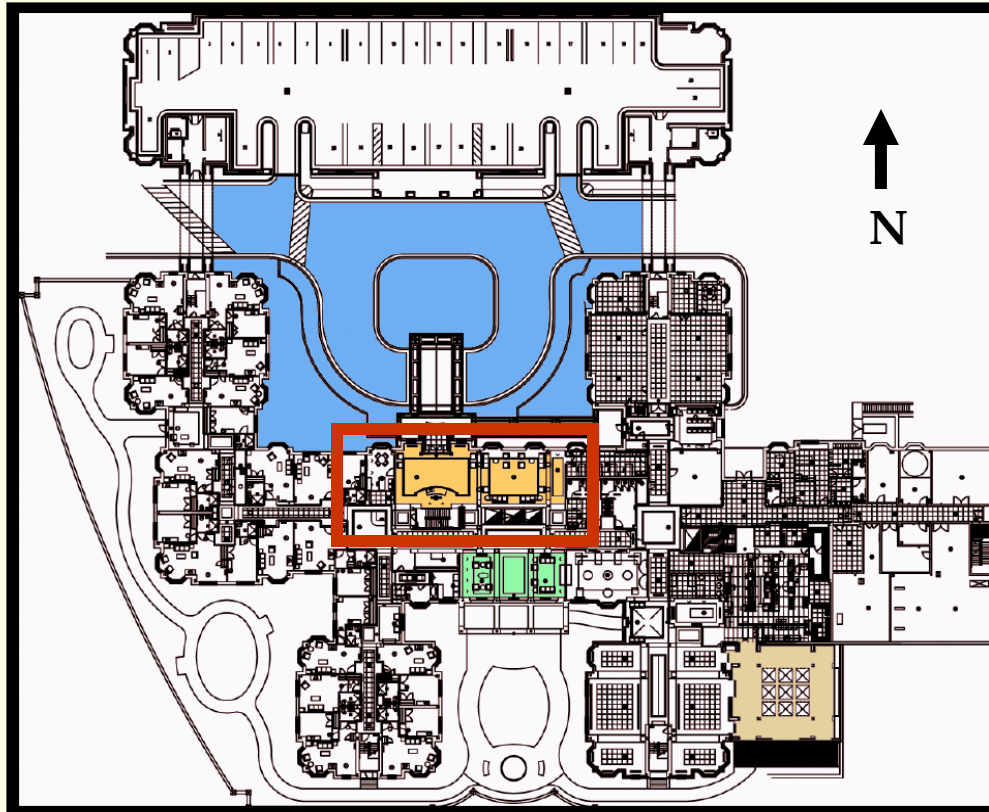
■ Dining Room

Design Space

Lobby

Grand Oaks Assisted Living Facility

Lobby



- Outdoor Entry and Walkway

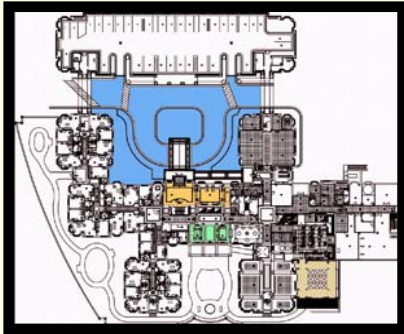
- Lobby

- Living Room/Library

- Lunch Café

Grand Oaks Assisted Living Facility

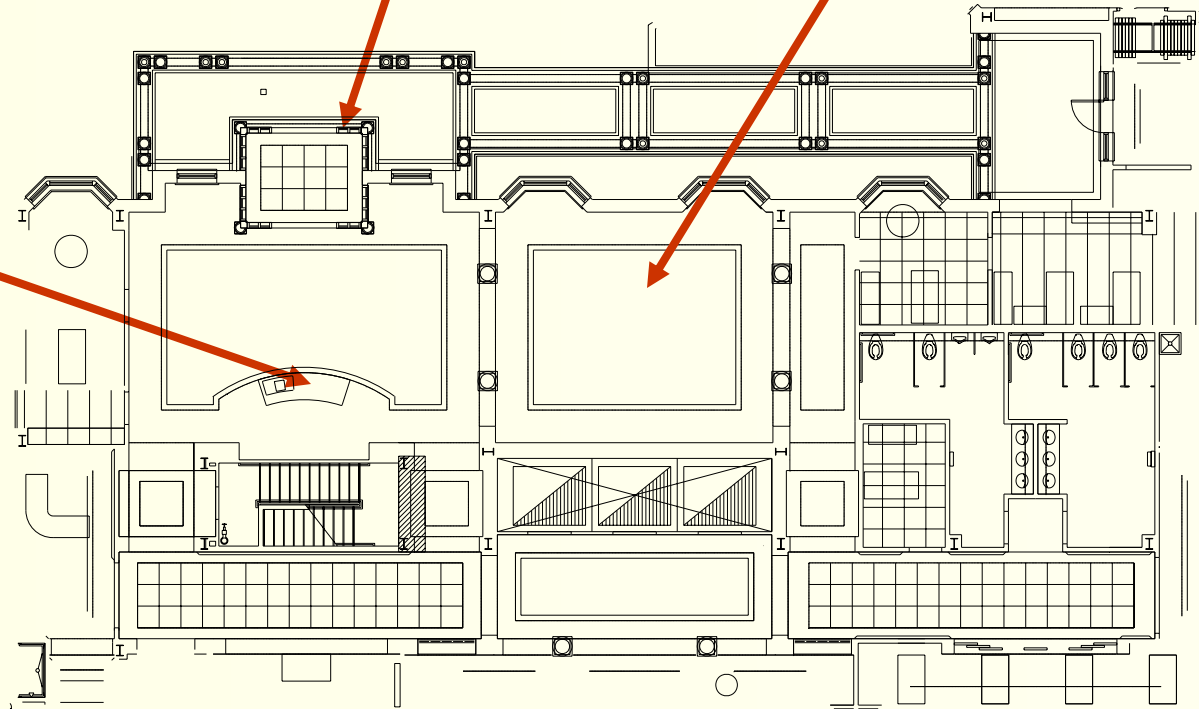
Lobby - Description



Main entry

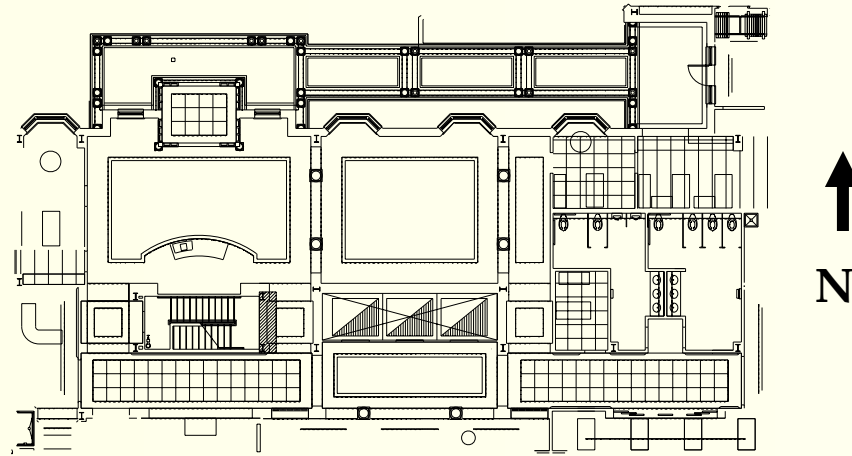
Parlor

Receptionist

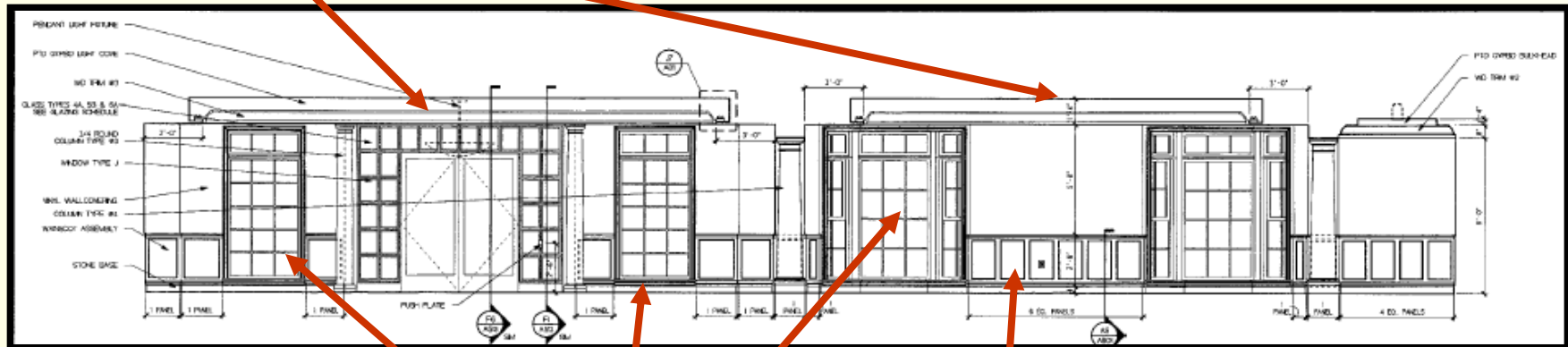


Grand Oaks Assisted Living Facility

Lobby – Key Features



North Elevation



Decorative Wainscot

Large Expanse of Windows

Decorative Cove

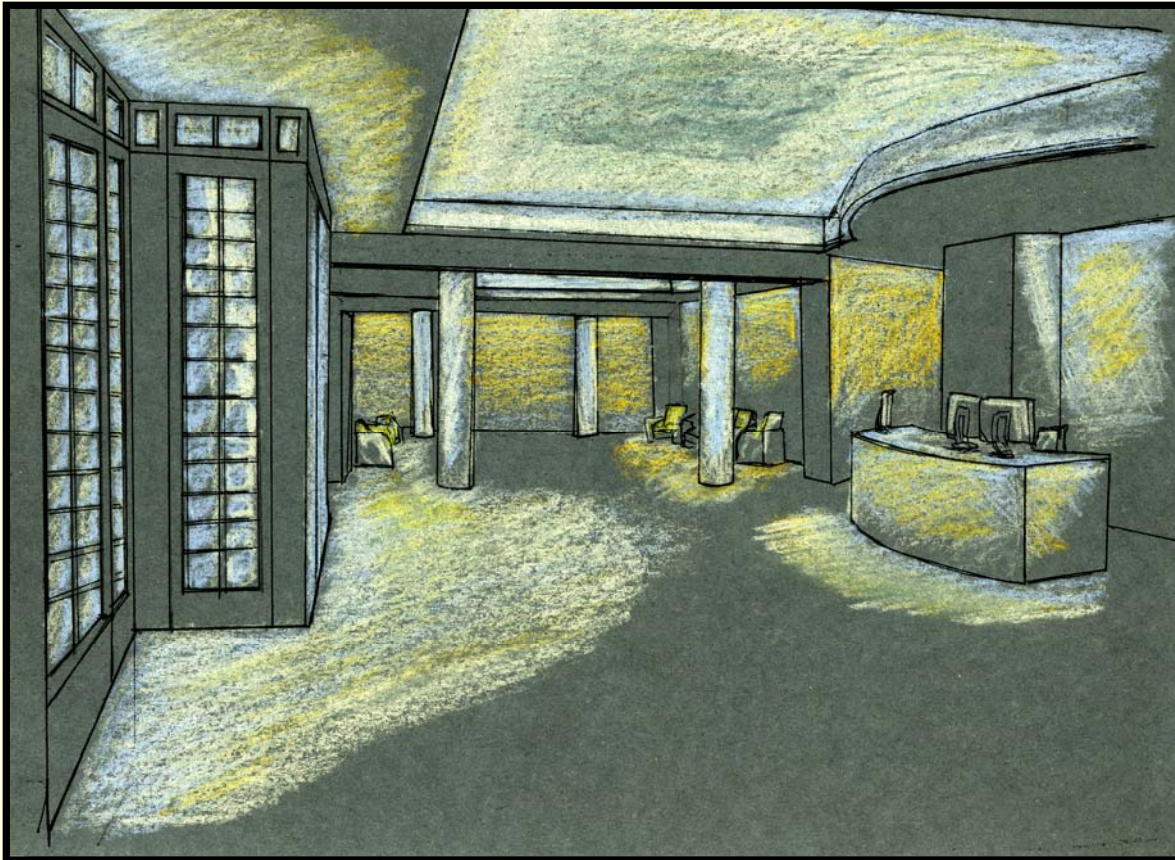
Lobby - Schematic Design Goals

- Make use of daylight into space
- Address adaptation time
 - higher illuminance levels during the day
 - lower illuminance levels during the night
- Even illumination – avoid spots of light
- Warm and inviting atmosphere

Lobby – Schematic Design Examples



Lobby – Schematic Design



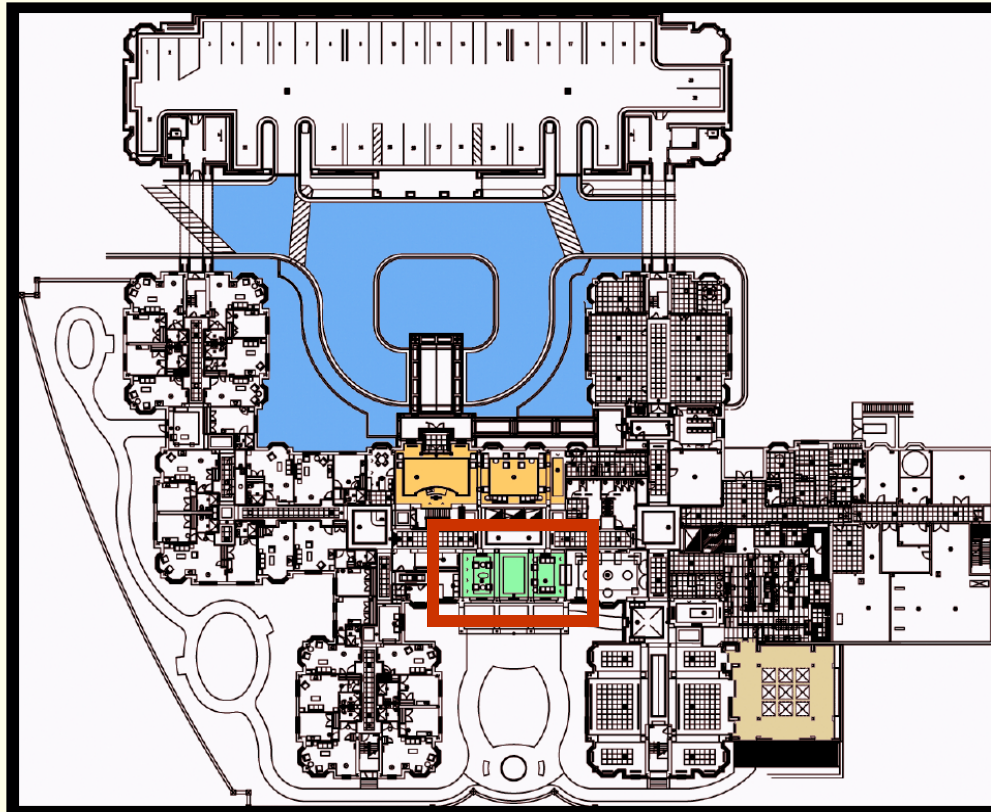
- Ceiling – cove lighting for diffuse ambient light
- Walls – washed with light to provide even illumination in the visual field
- Floor – shadows kept to minimum with indirect lighting
- Reception – highlighted for visual recognition
- Furniture – down light to create more intimate area

Design Space

Living Room/Library

Grand Oaks Assisted Living Facility

Living Room/Library



▪ Outdoor Entry and Walkway

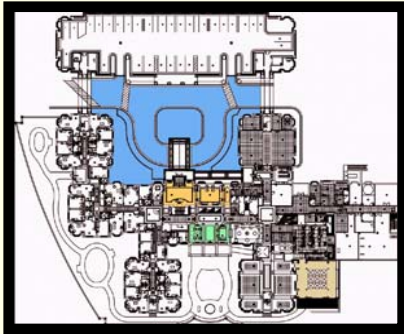
▪ Lobby

▪ Living Room/Library

▪ Dining Room

Grand Oaks Assisted Living Facility

Living Room/Library – Space Details

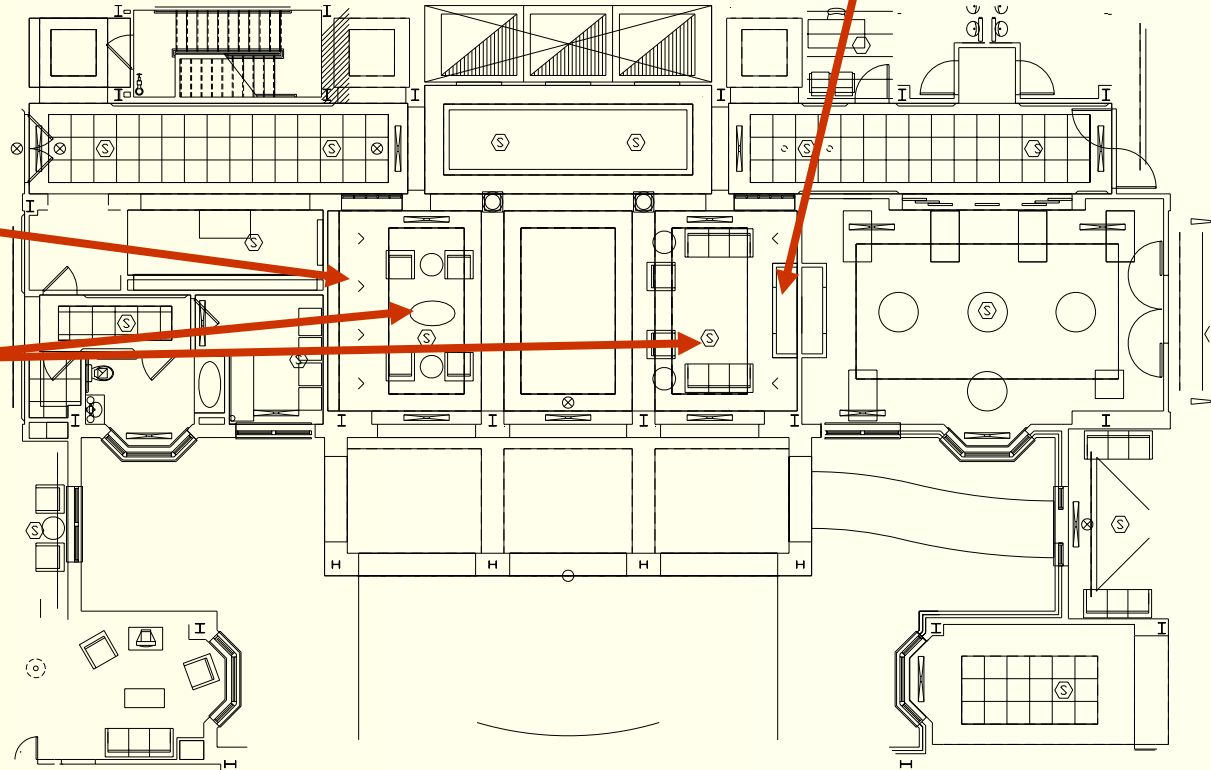


Fire Place



Bookshelves

Reading/Relaxing



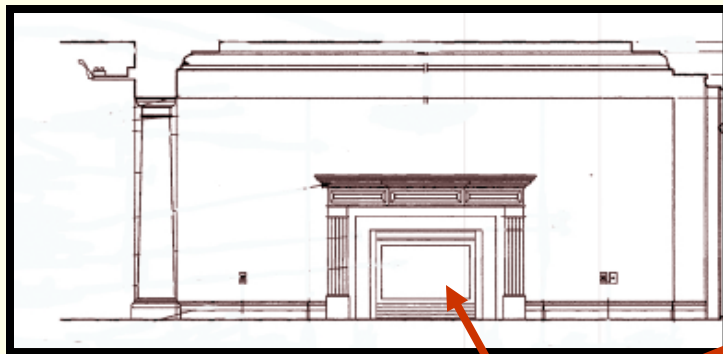
Grand Oaks Assisted Living Facility

Living Room/Library – Key Features

South Elevation

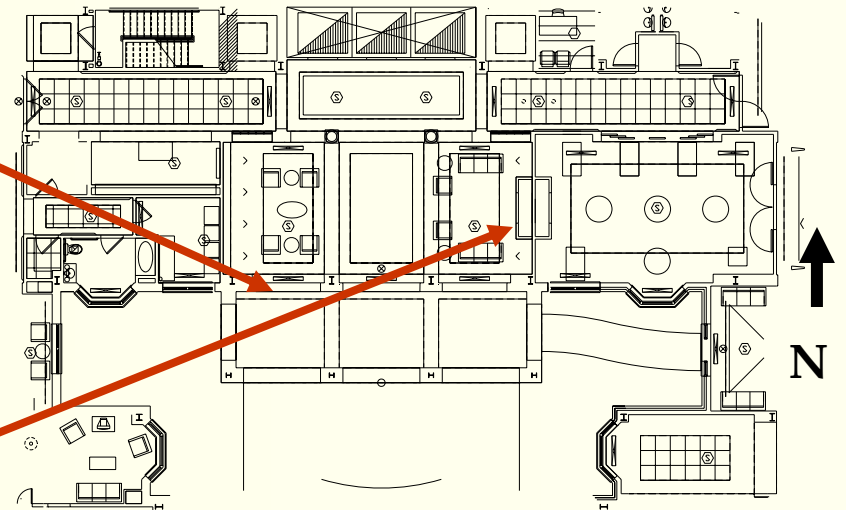


Large Expanse of South Facing Glass – Overhang reduces direct glare



East Elevation

Fire Place



Living Room/Library- Schematic Design Goals

- **Make use of daylight into space**
- **Even illumination – avoid spots of light**
- **Warm and inviting atmosphere**
- **Low Glare**
- **Avoid Veiling Reflection – (reading)**

Living Room/Library - Schematic Design Examples



Living Room/Library – Schematic Design



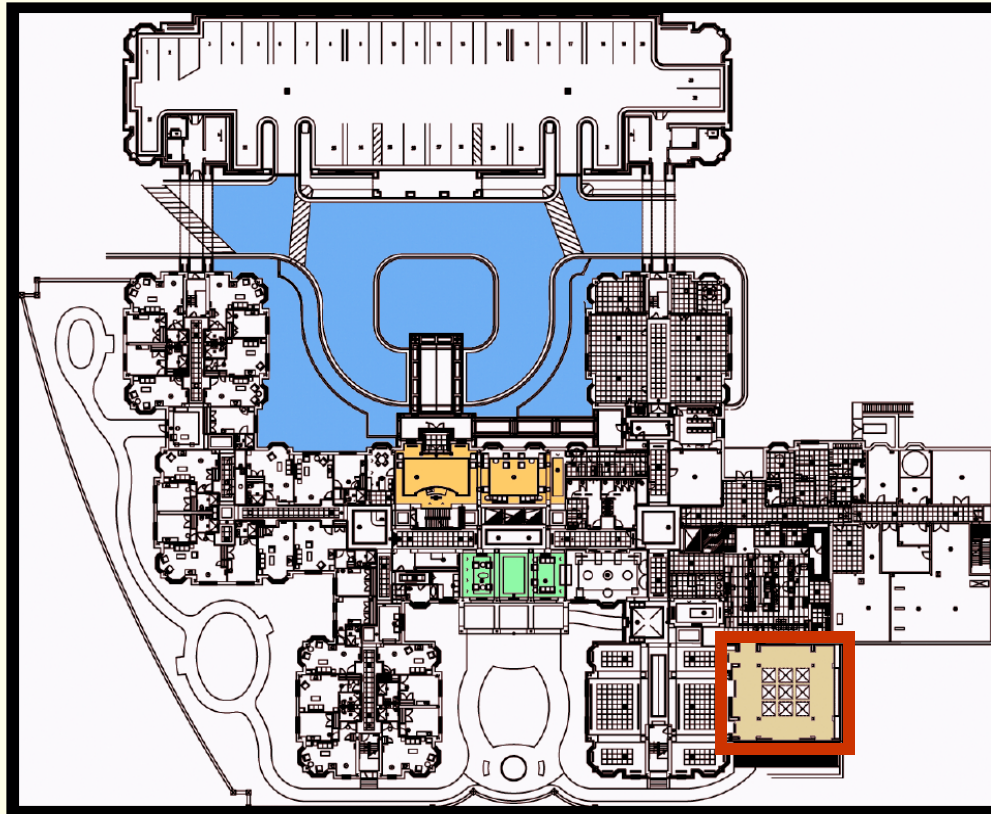
- Ceiling – cove lighting for diffuse ambient light
- Columns – highlighted to give dimension/contrast to space
- Floor – shadows kept to minimum with indirect lighting
- Furniture – showered with diffuse indirect lighting from cove
- Seating Areas – table lamps to make each space more intimate
- Fire Place – mantle highlighted to create a focal point in the space

Design Space

Dining Room

Grand Oaks Assisted Living Facility

Dining Room



▪ Outdoor Entry and Walkway

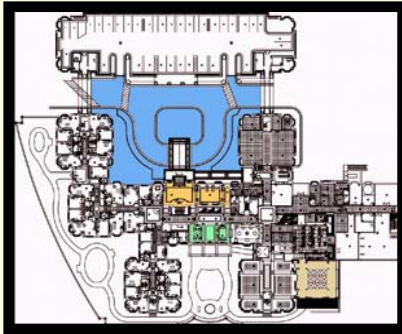
▪ Lobby

▪ Living Room/Library

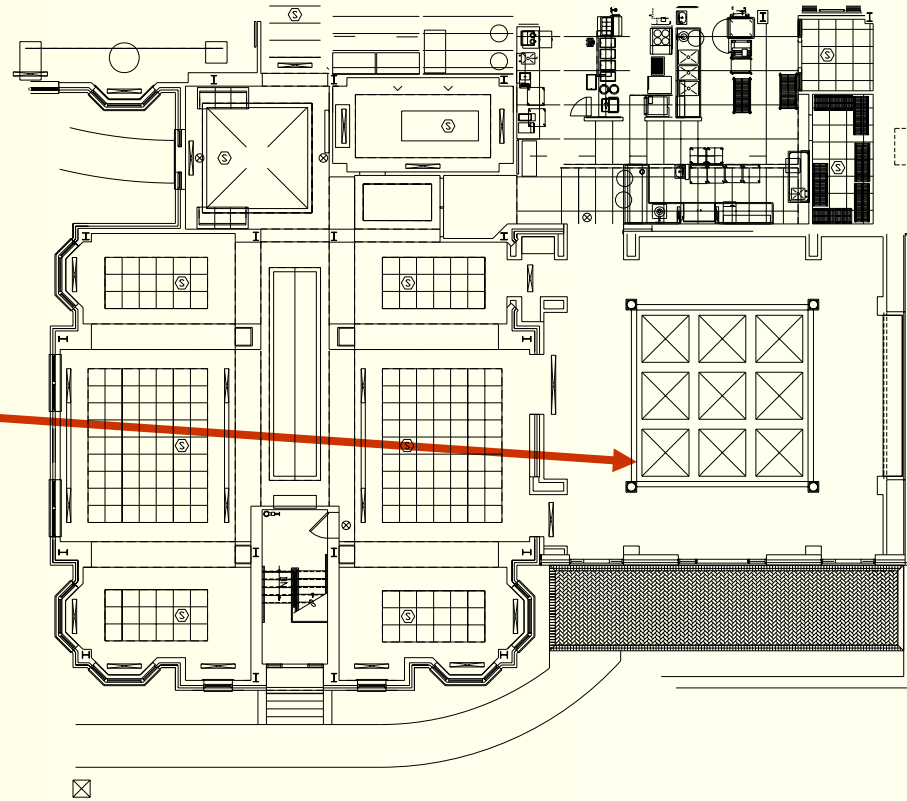
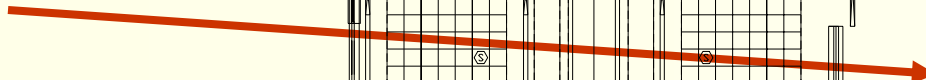
▪ Dining Room

Grand Oaks Assisted Living Facility

Dining Room – Space Details



Skylights



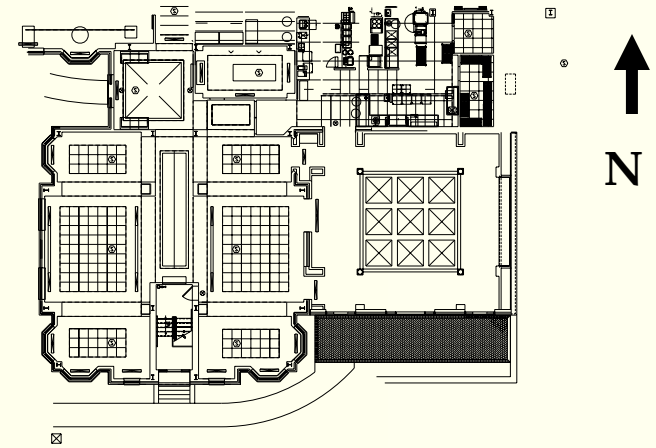
I

S

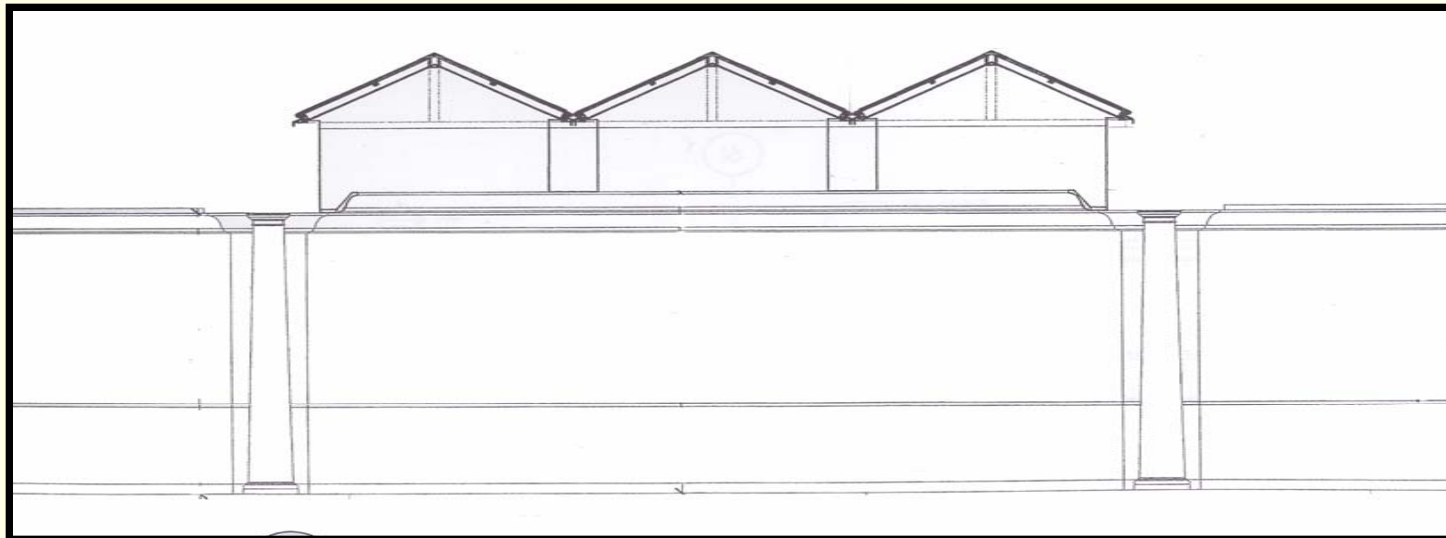


Grand Oaks Assisted Living Facility

Dining Room – Space Details



Skylight Section



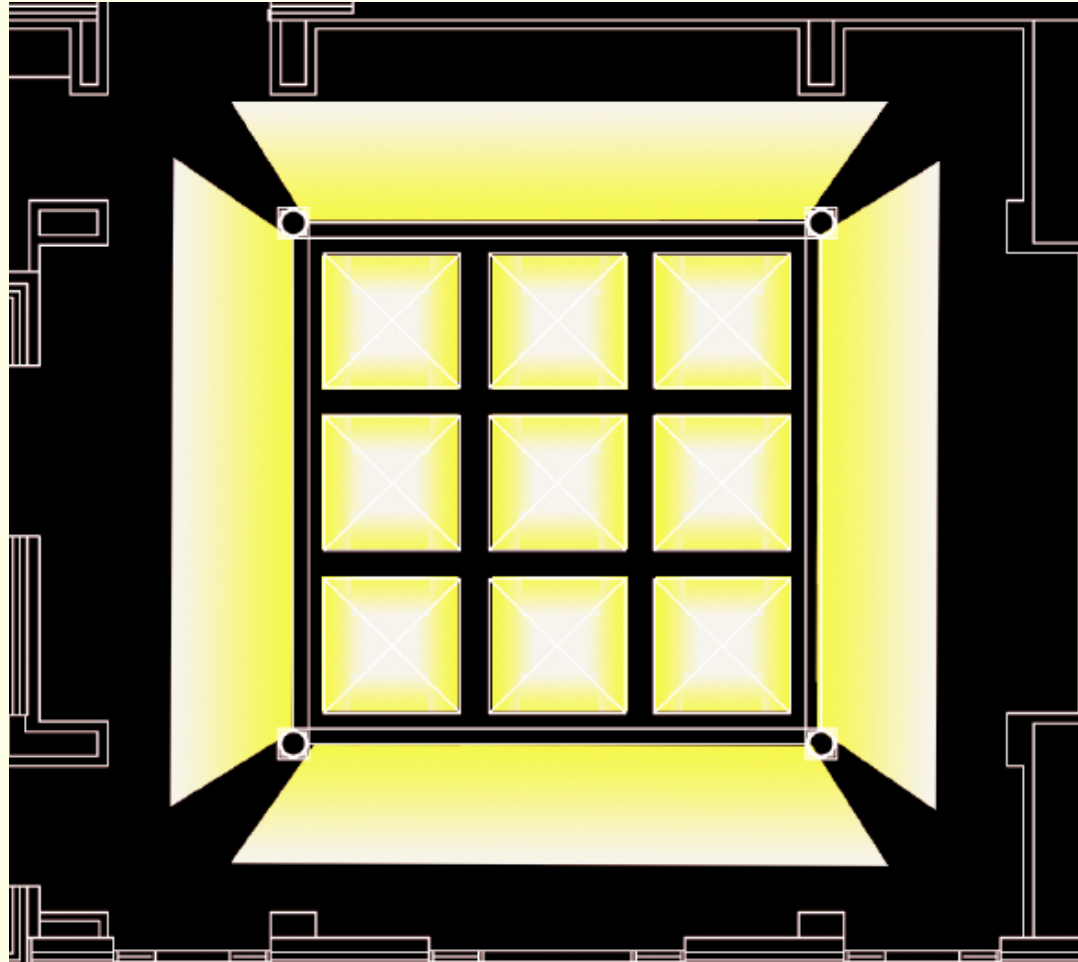
Dining Room - Schematic Design Goals

- **Make use of daylight into space**
- **Good facial recognition**
- **Even illumination – avoid spots of light**
- **Warm and inviting atmosphere**
- **Low contrast ratios**

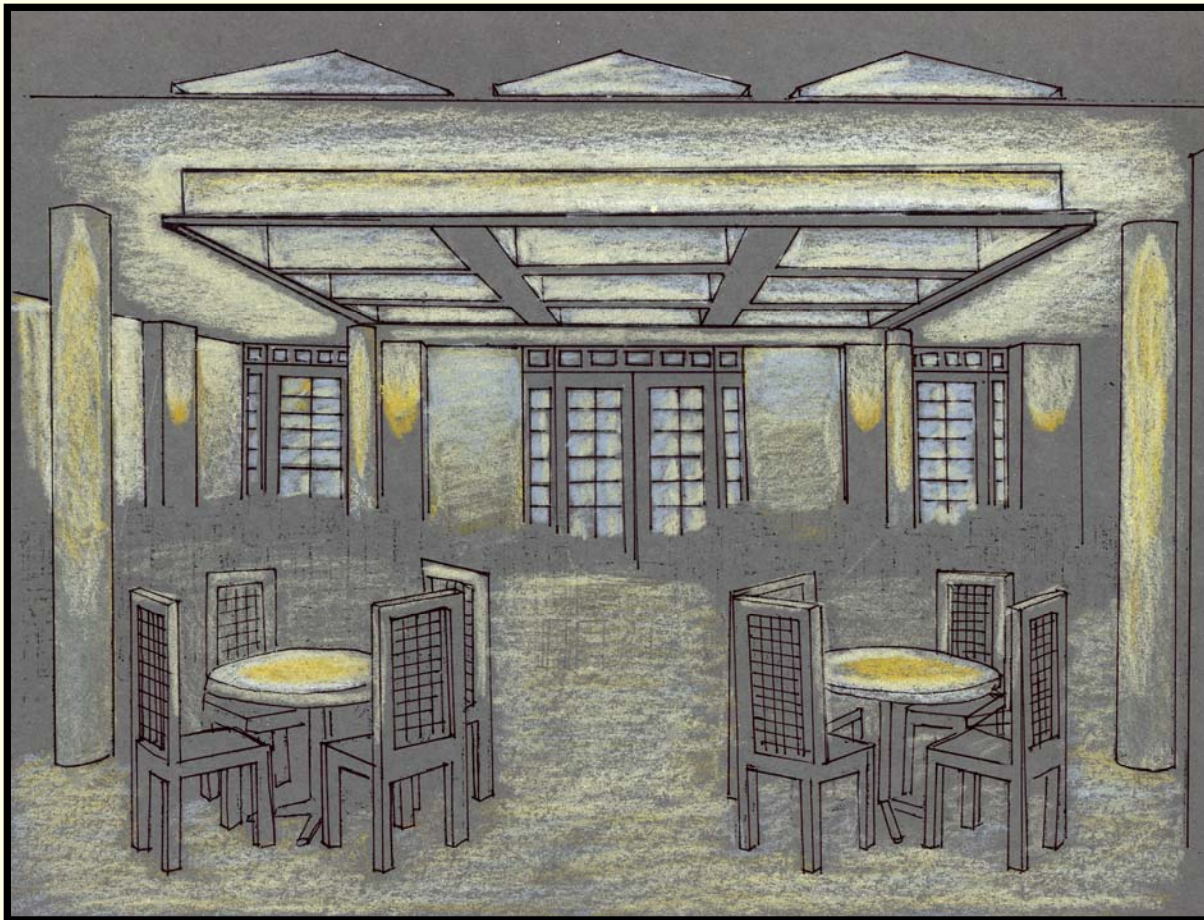
Dining Room - Schematic Design Examples



Dining Room – Schematic Design



Schematic Design - Lobby



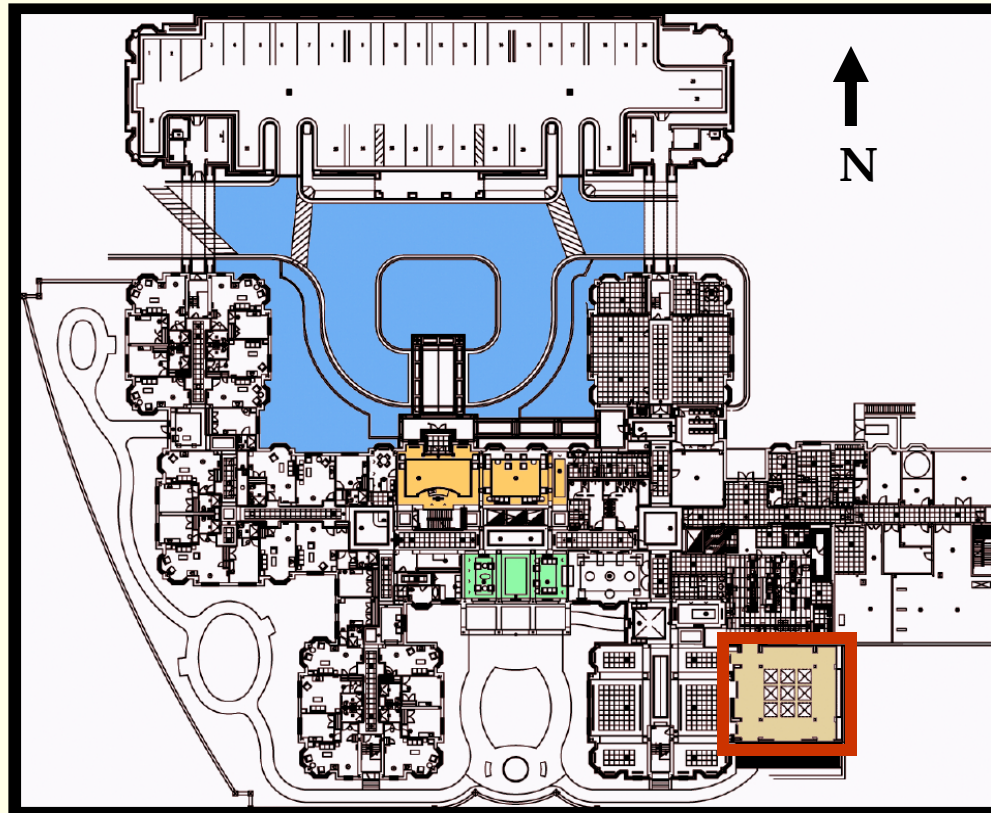
- Ceiling – cove lighting for diffuse ambient light
- Skylights – provide nice daylight – uplit during night time hours
- Table – diffuse general illumination – directional downlight for highlight
- Walls – washed with light to reduce contrast between windows and walls
- Columns - directional downlight

Design Space

Outdoor Entry and Walkway

Grand Oaks Assisted Living Facility

Outdoor Entry and Walkway



■ Outdoor Entry and Walkway

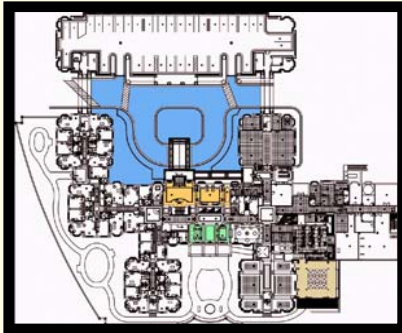
■ Lobby

■ Living Room/Library

■ Dining Room

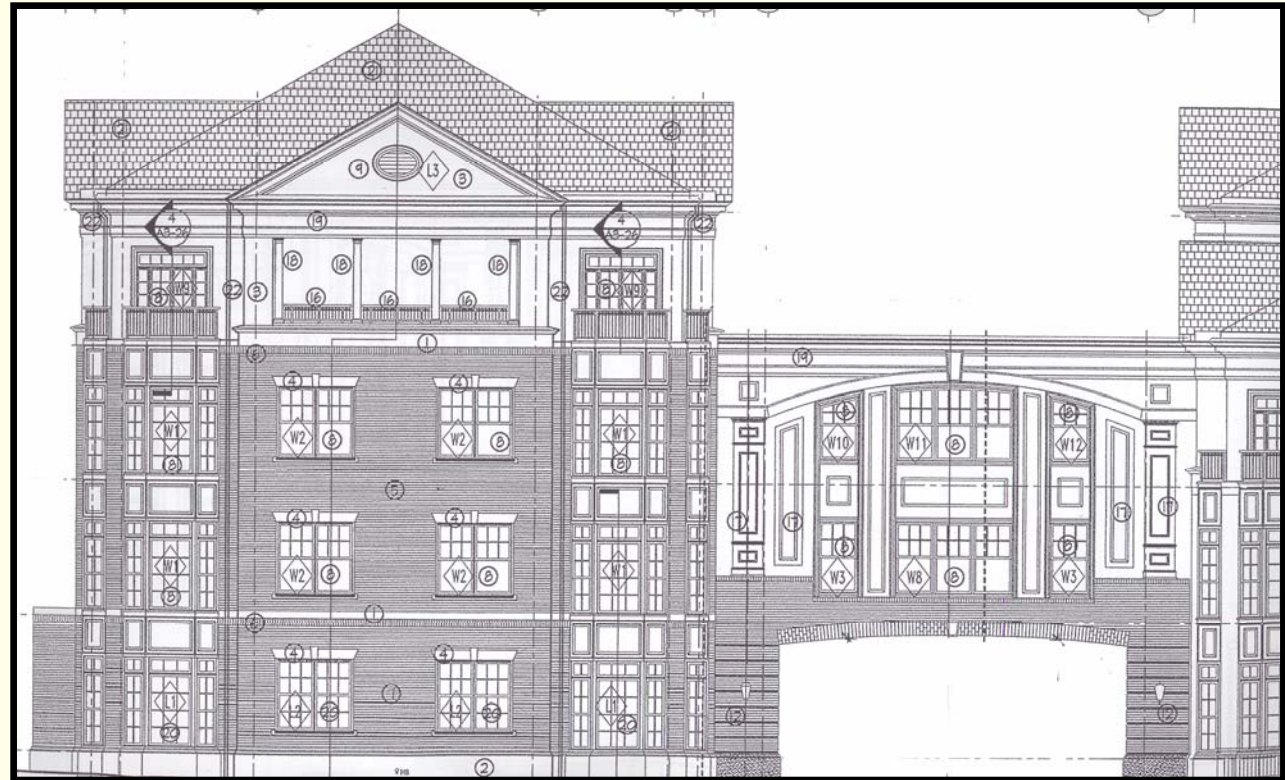
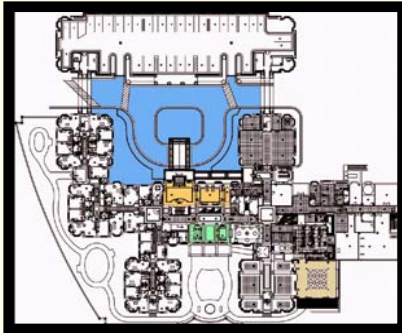
Grand Oaks Assisted Living Facility

Building Entry and Walkway – Space Details



Grand Oaks Assisted Living Facility

Building Entry and Walkway – Bridge and Addition



West Elevation

Building Entry and Walkway - Schematic Design Goals

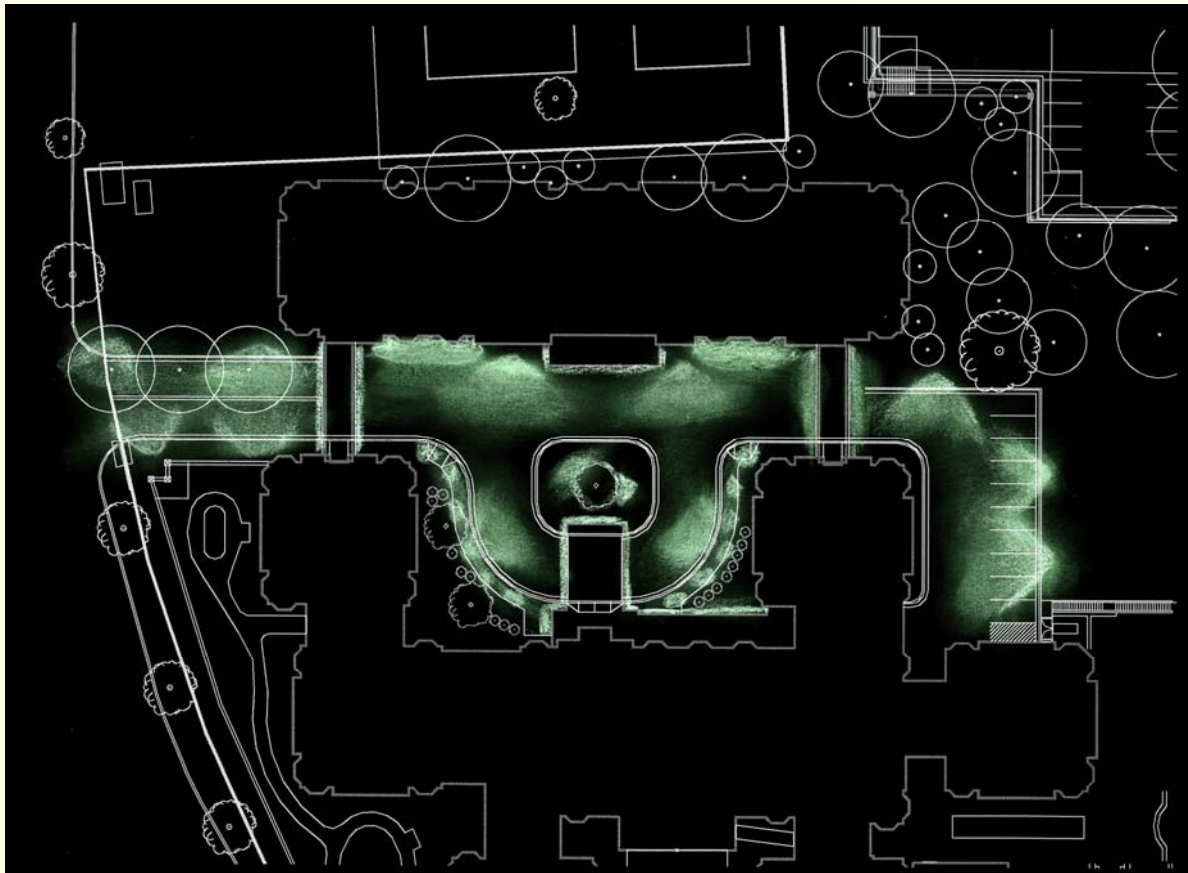
- Hierarchy of luminance to establish building entry
- High luminance at parking garage entry
- High general illuminance values to accommodate slow adaptation time
- Limited Spill light into resident rooms

Grand Oaks Assisted Living Facility

Building Entry and Walkway - Schematic Design Examples



Building Entry and Walkway – Schematic Design



- Pole Mounted Fixture for general road way illuminations
- Spill light from parking garage entry
- Accent uplight on tree
- Spill light from Porte Cochere and covered walkway
- Bollards for increased walk way illumination

Mark W. Miller

Questions?