

151 First Side

Pittsburgh, PA

www.151firstside.com

PRIMARY PROJECT TEAM

Owners: EQA Landmark Communities
Ralph A. Falbo, Inc.
Zambrano Corporation

Architect: Indovina Associates Architects

Structural Engineer: The Kachele Group

MEP Engineer: RAY Engineering

Electrical Consultant: Caplan Engineering Company

Contractor: Zambrano Corporation

GENERAL PROJECT INFO

18 story condominium including parking
250,000 SF
\$24M construction cost

CONSTRUCTION TYPE

Design-Build

ARCHITECTURE

82 units ranging from 1,000 to 4,000 SF
Covered in 4" veneer to appear as concrete finish
Set backs allow for large balconies on upper floors

STRUCTURAL

Floor is Hambro system consisting of steel joists, steel decking, and concrete slab
Columns are steel W shapes
Exterior walls are 8" CMU with 4" veneer
Lateral bracing is a combination of braced frames and moment connections
Foundation is caisson system

MECHANICAL

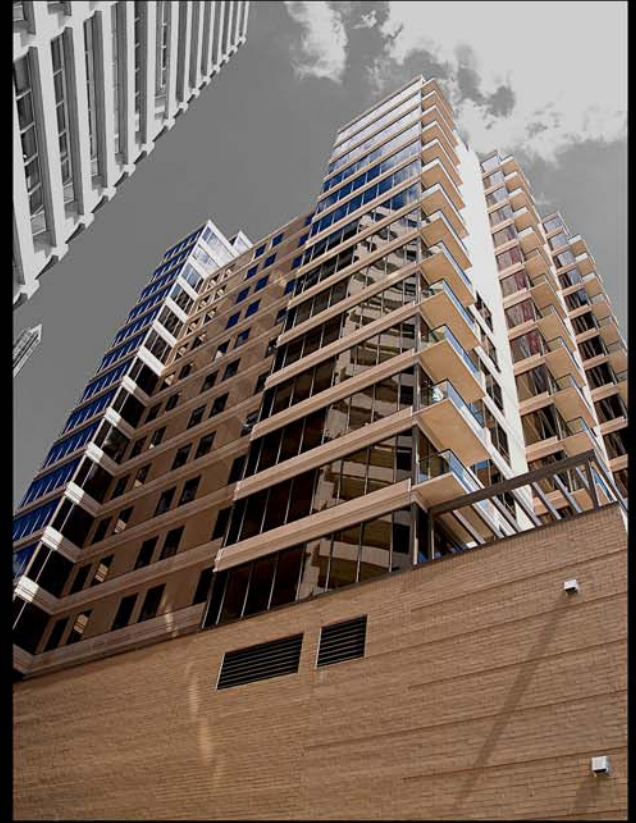
Mechanical system is comprised of individual heat pumps and AC systems with one roof top unit

ELECTRICAL

Main and secondary systems are 120/208 volt 3 phase 4 wire. Main switch is 1800A

Lighting

Most lighting is recessed indirect troffers with fluorescent downlights and wall washers in corridors



William J. Buchko - Structural Option

<http://www.engr.psu.edu/ae/thesis/portfolios/2008/wjb170/>