

Corbin Building



Lighting Proposal Memo

Matthew Trethaway

Lighting/ Electrical

AE 481W

9/2/2011

Advisor: Dr. Houser

Summary

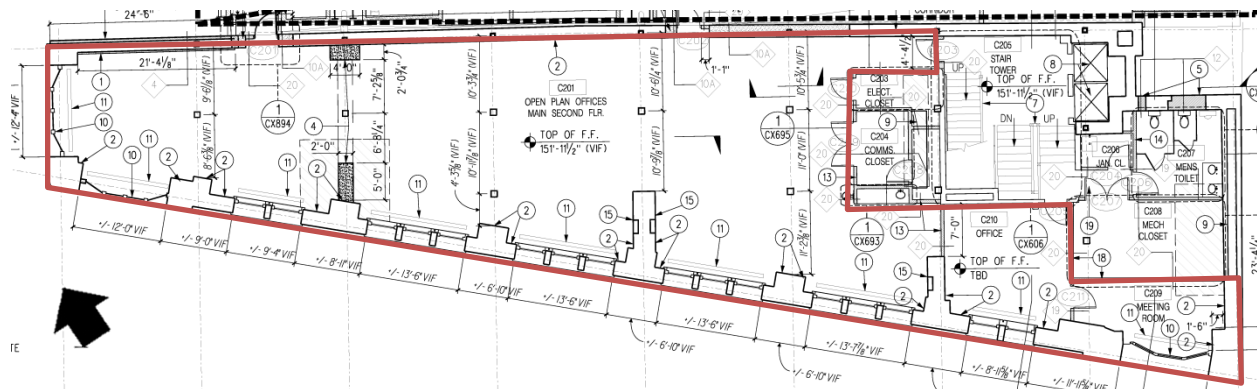
I will be studying the four following spaces

- 2nd floor office
- Retail Space 1
- Building South and West Façade
- Fulton Street Transit Center Lobby

The retail space will have three different design concepts. The Fulton Street Transit Center Lobby will focus on psychological impressions.

2nd Floor Open Office- Large Work Space

The large work space consists of an open office plan on the second floor. All the open office plans are the same on floors 2 through 8. Along the north wall there is no windows just one door that goes into the Fulton Street Transit Center building next door. On the east side there is a bay window the length of the wall. The south wall is filled with windows providing daylight to enter. There is no furniture layout for the offices. The task performed in this space would be administrative tasks, conferences, and reading and writing. The office will need to take into consideration glare on computer screens from daylight and artificial light.



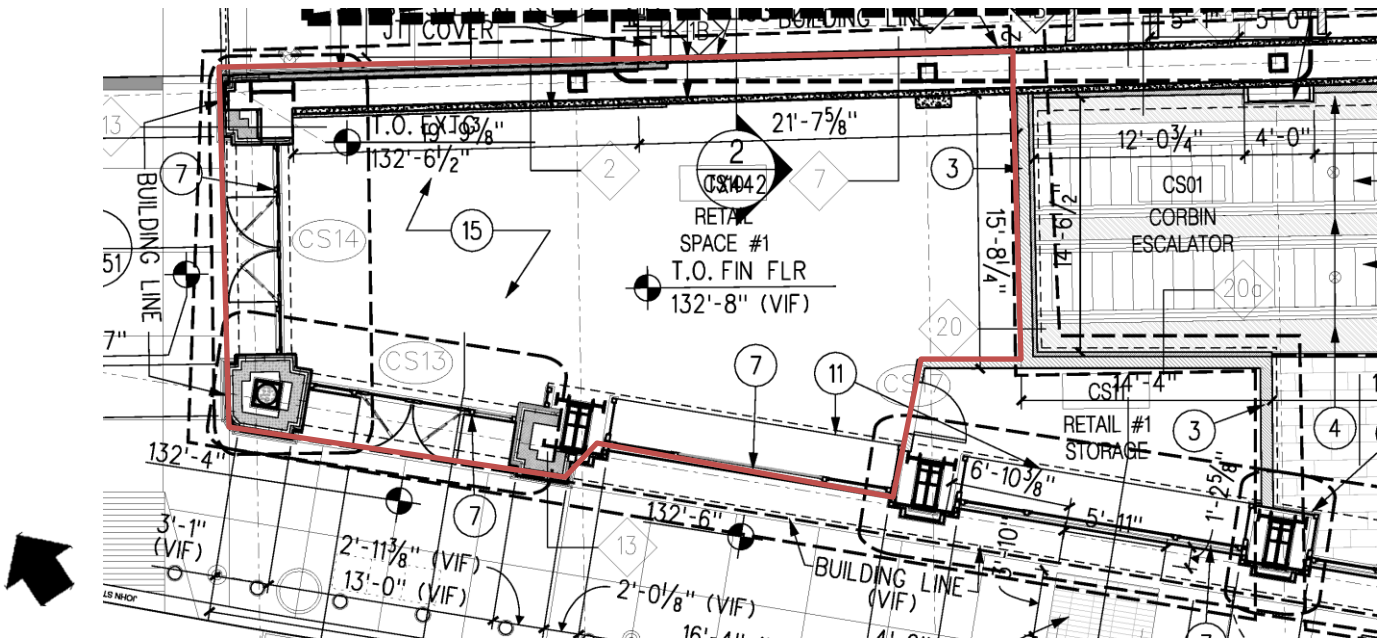
Office Data

Dimensions:	32' 162' (W x L)
Square Feet:	5,184 Approximate
Use:	Task and Computer Work
Materials:	White Plaster Walls, Concrete floor, Acoustical Ceiling tile

Retail Space 1- Special Purpose Space

For my special purpose space I am proposing using retail space 1. The retail store has entrances on the south and east façade at a prominent corner of Broadway and John street in lower Manhattan. The space has no layout or design yet for the store so I can start with a blank slate and create a lighting

design not influenced by prior design. The retail space is also a double height space. The retail space has window displays, were focal point to task ratios would be important. Ambient light is need for walking around the store with focal lighting on the merchandise. Color rendering is crucial in a clothing store because the colors need to look vibrant and attractive. Also, at the register transitions need to be task light, so there are no mistakes made.



Retail Data

Dimensions:	32' x 20'
Square Feet:	640 approximately
Use:	Shopping
Materials:	Wall gypsum wall board pain picked by tenant, Concrete floor finish by tenant, White Plaster Ceiling

South and West- Building Façade

The façade of the Corbin Building is being restored to the original façade of 1910-1917. The base of the building façade consist of brown sandstone and terracotta. The upper parts of the façade is made of red brick and terracotta. There is a lot of ornate details in the façade. Also the windows are highlighted with cast iron scalloped arches. On the street level there is two entrances, one is for the Fulton Street Transit Center Lobby and the other is for the Corbin Building, both which need to light. Also there are two retail stores and window displays. Lighting the Fulton Street Transit Lobby entrance is very important since it needs to be found easily, so passangers can get to the subway. Also the lower part of the façade is going to be bright since the window displays will be light and entrances to the stores to attract. The façade will be classified in an LZ4 zone with high activity since its in middle of lower New York City.



South Façade Data

Dimensions: 162' x 110' (L x H)
Square Feet: 17,820
Use: Wayfinding/ Decoration
Materials: Sandstone, Brick, Terracotta, Glass

West Façade Data

Dimensions: 20' x 120' (W x H)
Square Feet: 2,400
Use: Wayfinding / Decoration
Materials: Sandstone, Brick, Terracotta, Glass



Rendering of south façade (Fulton Street Transit Center entrance)

(Rendering Courtesy of Arup)

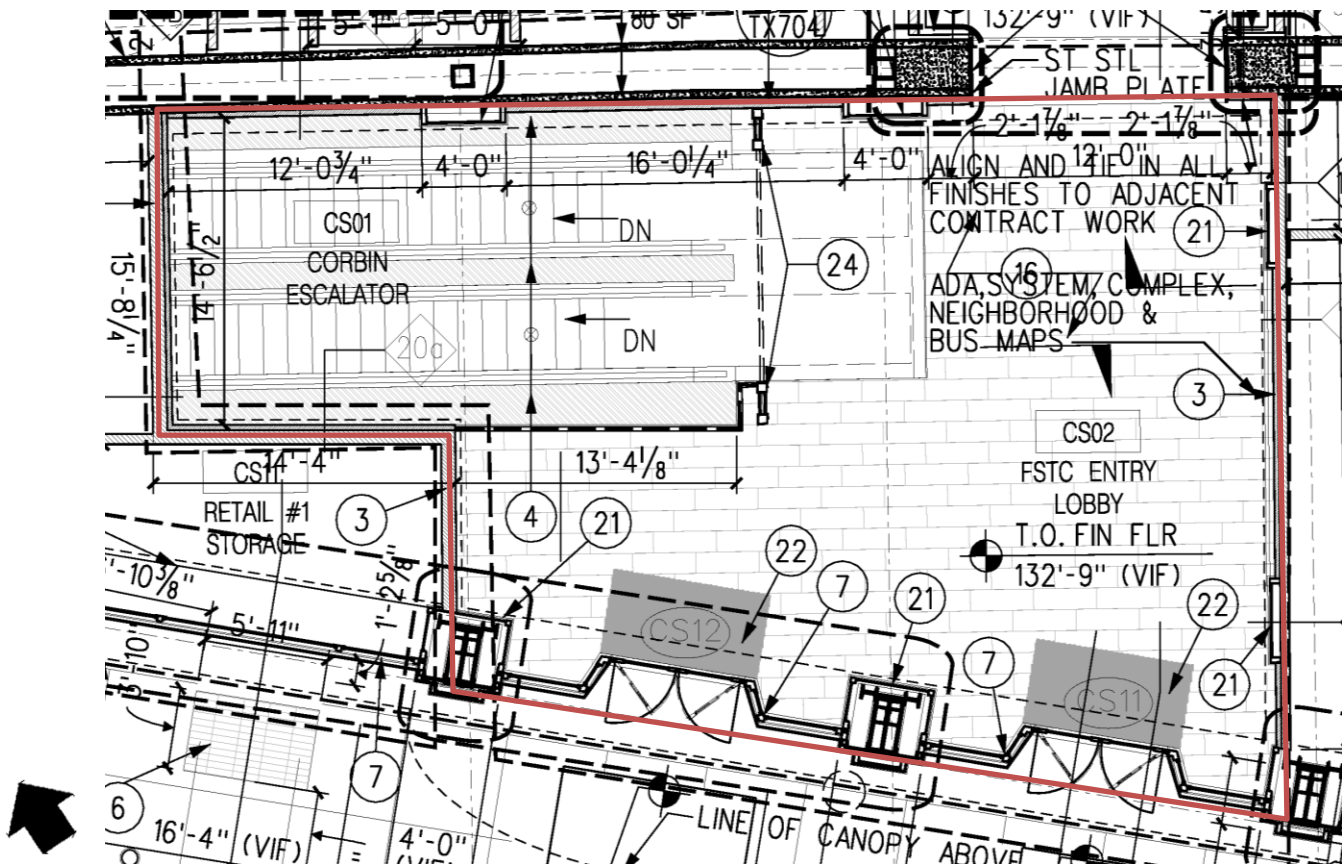


Rendering of south-west façade (Retail entrance)

(Courtesy of Arup)

Fulton Street Transit Center Lobby- Circulation Space

The Fulton Street Transit Center (FSTC) lobby is an important entrance for the subway system. Inside the double height lobby there is two express escalators which bring you to the platform level of FSTC. This lobby will have thousands of people passing through each day. The lobby is meant to transition people from the street to the subway or FSTC. Wayfinding is very important in this space since people are either going to walk straight into the FSTC or go down the escalator. Also, people will stop in the lobby and read maps to figure out which subway line to get on. The lobby lighting needs to provide wayfinding and visual clarity on the signs and the ability to read small text on a map.



FSTC Data

- Dimensions:** 37'x 30' (W x L)
- Square Feet:** 1,110 Approximately
- Use:** Transition Space/ Wayfinding
- Materials:** White painted gypsum wall board and wood paneling, Dark Granite Floor, Plaster Ceiling with acoustical ceiling tiles



Rendering Corbin Building Lobby (FSTC on right entrance)

(Courtesy of Arup)