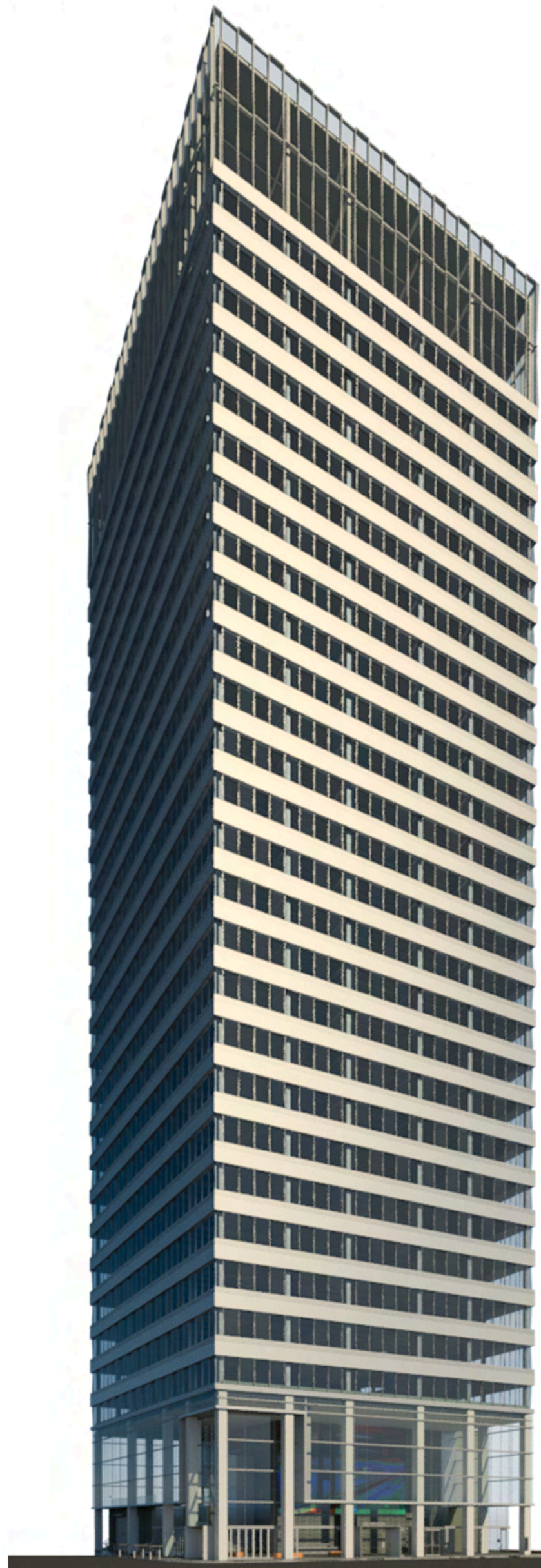


# AEVITAS

CANFIELD - CARLISLE - KAISERIAN - KREIDER - LIVORIO - SHARP - SLIWINSKI - VAN EEDEN



**BUILDING FACTS**  
 BUILDING HEIGHT 461' (Parapet), 457' (Roof)  
 FLOOR TO CEILING 10'  
 SQUARE FOOTAGE 420,000 Gross SF  
 INITIAL BUILDING COST \$157,327,000  
 LIFECYCLE PAYBACK 10.8 Years  
 START DATE April 7, 2014  
 CONSTRUCTION DURATION 26 Months  
 ACHIEVABLE LEED POINTS 93/110 Possible Points  
 (80 Required for Platinum)



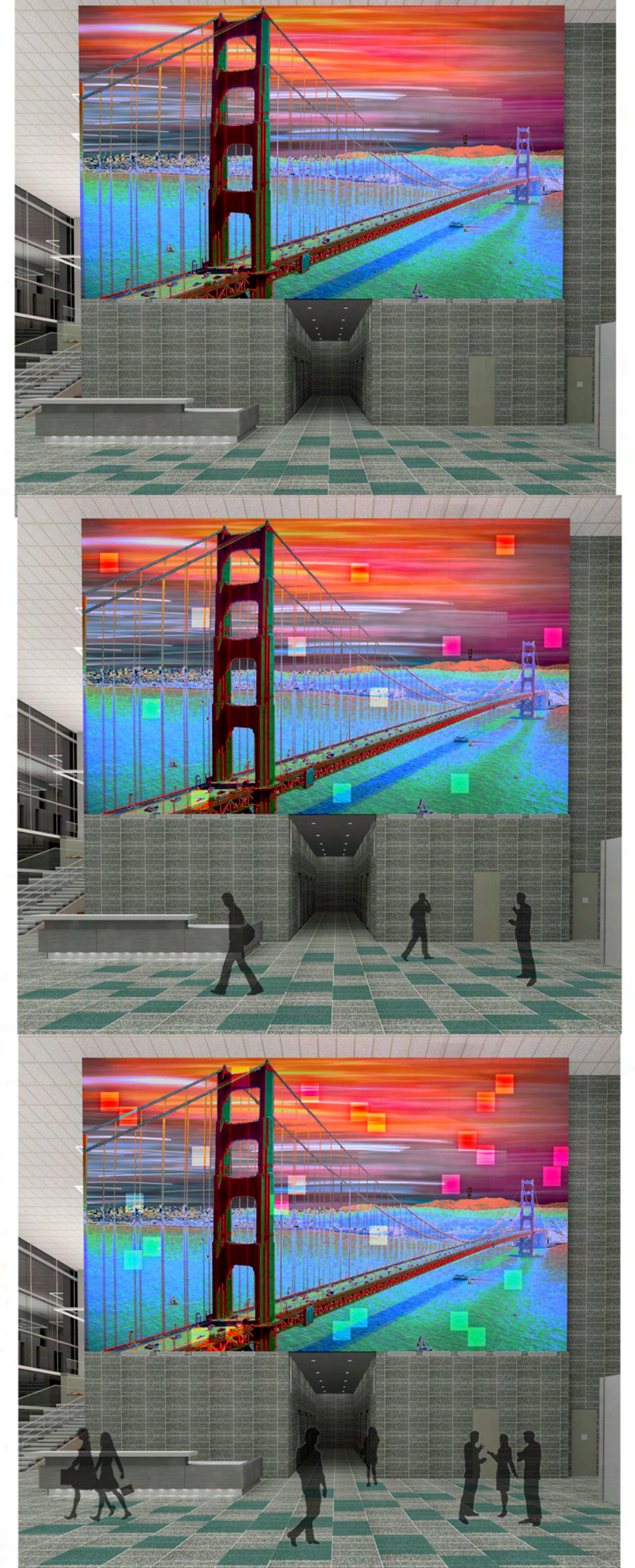
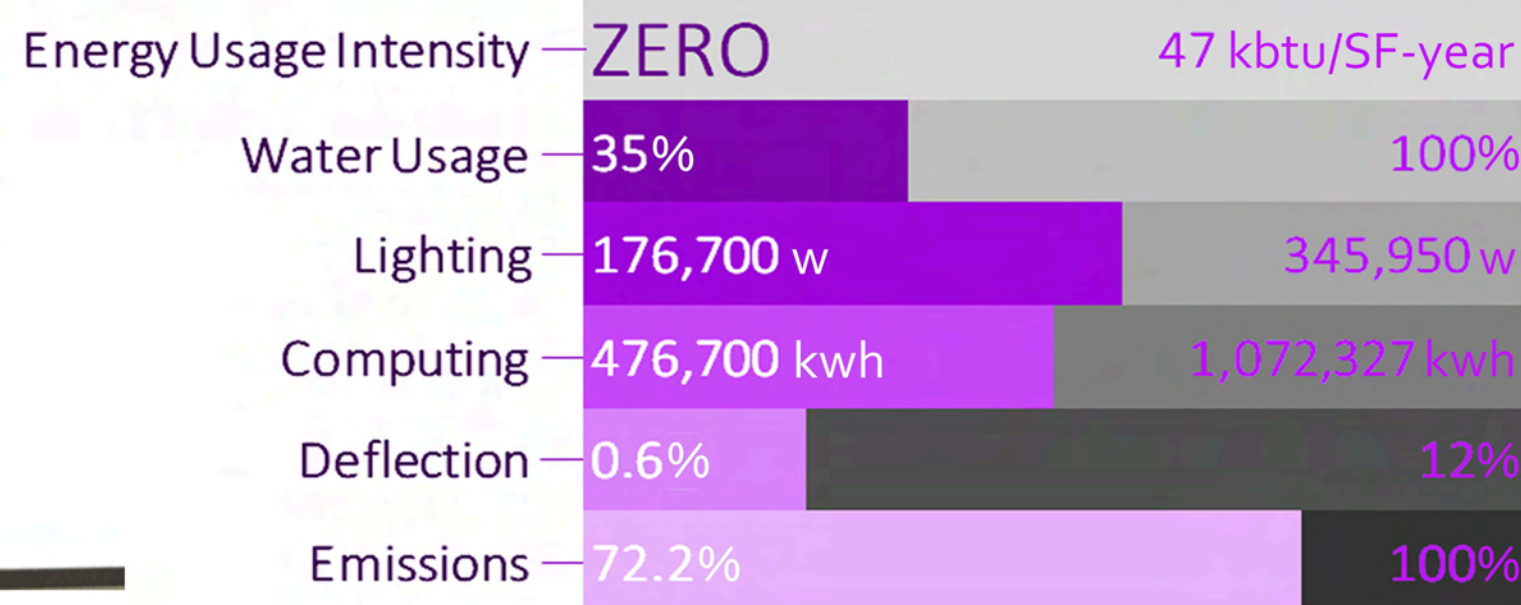
[zeroimpact]

[zeroenergy]

[zero interruption]

[zerowaste]

[zeroemissions]



## SYSTEMS OVERVIEW

- ARCHITECTURAL** Floor Plan Changes, Vestibule Addition, Integrated Public Art Piece
- FACADE** Natural Ventilation Louvers, Seismic Connections, Electrochromic Glazing
- MECHANICAL** Radiant Floor System, Natural Ventilation, Dedicated Outdoor Air System
- LIGHTING** LED Lighting, DALI Daylighting and Occupancy Controls, Task Lighting
- ENERGY GENERATION** Onsite Solar Array, Office Solar Array, Human Waste to Power Converter
- ELECTRICAL** AC & DC Distribution, Natural Gas-Powered Fuel Cells, Dual Electrical Risers
- STRUCTURAL** Steel Superstructure, Braced Frame Core, Composite Beams and Deck, Outrigger System, Concrete Substructure
- CONSTRUCTION** Production Planning, Matrix Scheduling, Waste Management, BIM Execution Planning, Site Planning

