



*Bird's Eye View*

## Project Overview

<b>Occupant:</b>	Northeastern Illinois University
<b>Building Type:</b>	Classrooms, labs, lounges, etc.
<b>Size:</b>	55,000 SF
<b>Stories:</b>	3 (No Basement)
<b>Construction:</b>	May 2013 – September 2014
<b>Delivery:</b>	Design-Bid-Build

## Project Team

<b>Architect:</b>	JGMA
<b>Landscape Arch:</b>	Site Design Group
<b>MEP Engineer:</b>	Primera
<b>Struct. Engr:</b>	Forefront
<b>Civil Engineer:</b>	Prism
<b>Constr. Mngr.:</b>	N/A (Multiple Prime)

## Architecture

- The building is located along the Kennedy Expressway and will be passed by over 400,000 Vehicles each day.
- Nearly the entire building is enveloped in a curtain wall façade.
- The curtain wall has fins that are designed to limit solar gains and control the amount of natural daylight entering the building.
- The fins appear gold when driving into the city and blue when leaving the city reflecting the school colors

## Structural System

- The building has no basement and the foundation consists of concrete footings and grade beams.
- The first floor is supported by a slab on grade
- The building is framed with ASTM A992 Grade 50 steel
- The floors are supported by a 20 gage composite metal deck with 4 ½" of concrete

## Lighting & Electrical System

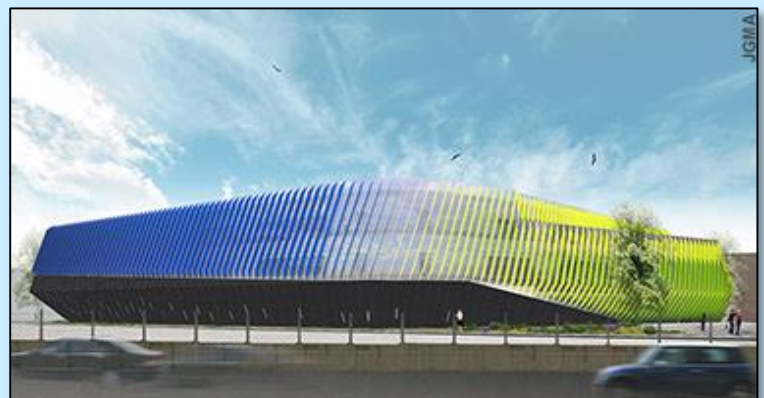
- Daylight sensors and occupancy sensors control the lighting levels
- Most of the lighting system consists of energy efficient fluorescent fixtures.
- The electrical system originates from a dedicated service room on the first floor (480V/277V, 3 phase, 4 wire)
- A photovoltaic array on the roof provides additional power to the building.

## Mechanical System

- The cooling and ventilation requirements of the building are served by two roof top air handling units.
- Each AHU is served by an air cooled condensing unit
- The AHU's serve the 71 VAV boxes located in the building.
- The buildings heating loads are served by two 750 MBH natural gas fired hot water boilers.
- The boilers serve hot water radiant finned tubes that are located along the perimeter of the building.



*Student Lounge*



*Southwest Elevation*