

2010

Lighting Proposal Memo Daskalakis Athletic Center Philadelphia, PA



Britnei Godusky | Lighting/Electrical
Faculty Advisor: Dr. Houser
9/13/2010

For the lighting design portion of my senior thesis, I propose to concentrate on four main spaces to meet the established lighting/electrical thesis requirements, with the possibility of a fifth for an extra daylighting focus. The proposed spaces are listed below.

- large work space | open office/collaboration area
- special purpose space | restaurant
- circulation space | lobby/entrance
- outdoor space | building façade
- possible daylighting focus | gymnasium

A more detailed description of each space follows.

large work space | open office/collaborative workspace

Description:

The collaborative workspace is located on the eastern side of the first level, just north of the main entrance and security desk. The space contains three offices enclosed in open cubicles, and a central conference table for 6-8 individuals. A corridor lines the cubicles providing passage to the director's office and main conference room.

This is the only office space in the Daskalakis Athletic Center, so all administrative tasks take place here. The collaborative space will be used primarily for desk tasks: the reading and writing of various print sizes, and multi-person collaboration. This space also contains computers, with usage taking place along the western wall (shown below in image 2) as well as within the cubicles. All phone calls and communications will also take place within this area.



Image 1 – Collaborative Workspace, Conference area

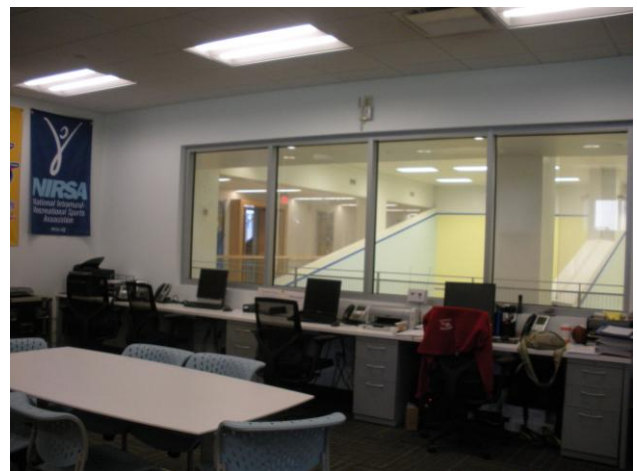


Image 2- Collaborative workspace, computer usage

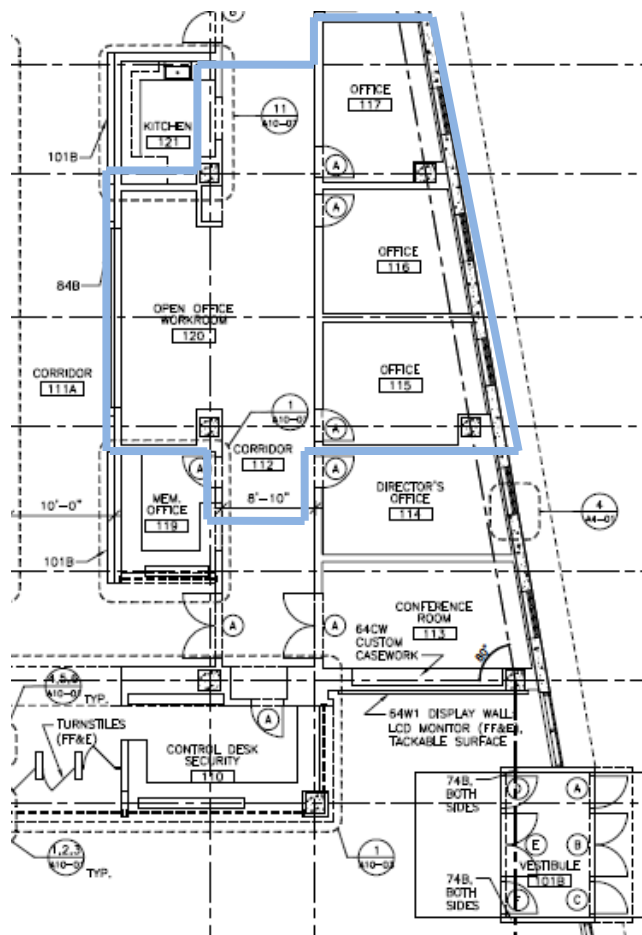




Figure 1 - Floor plan of collaborative workspace

Dimensions:

The collaboration space encompasses approximately 1,100sf and is 9'-0" from floor to ceiling. The central square conference portion of the space is 18' x 24'. The cubicle walls are 6' tall. The conference area and open cubicles are separated by an 8'-10" circulation corridor, providing a pathway through the space to the director's office and main conference room.

Materials and Finishes:

-  Walls: The walls are regular type painted gypsum wall board in Sherwin Williams Aloof Gray.
-  Floor: The entire floor in the collaborative workspace area is covered with Shaw Carpet tile in Nylon.

Base: The walls are lined by a 4" rubber Johnsonite base.

Ceiling: The collaborative space is Armstrong Techzone 2' x 2' acoustic ceiling tile.

special purpose space | restaurant

Description:

Centrally located in the heart of Drexel's campus, the Daskalakis Athletic Center dedicated the western half of their southern Market Street façade to a restaurant and sports bar. Windows extending to the ceiling provide a street view to almost every table in the restaurant, with flat screen TVs located throughout facing all directions. A full bar spans the north wall of the main restaurant space, creating a concealed space for an intimate dinner experience shielded from the commotion of the sports bar.

Both the guests and the wait/bar staff should be considered within this space. The principal tasks for the guests in the seating area include dining, socializing, and drinking, but can at times include reading, writing, and collaborative meetings given the location on a college campus. At either end of the restaurant are hostess stands (see Image , below). These areas should be inviting and draw people into the restaurant, while providing enough light for writing and computer tasks. A great deal of movement will take place throughout the space as servers run food and guests move between the bar and seating area.



Image 3 – Sports bar interior, southern wall



Image 4 – Intimate Dining Space

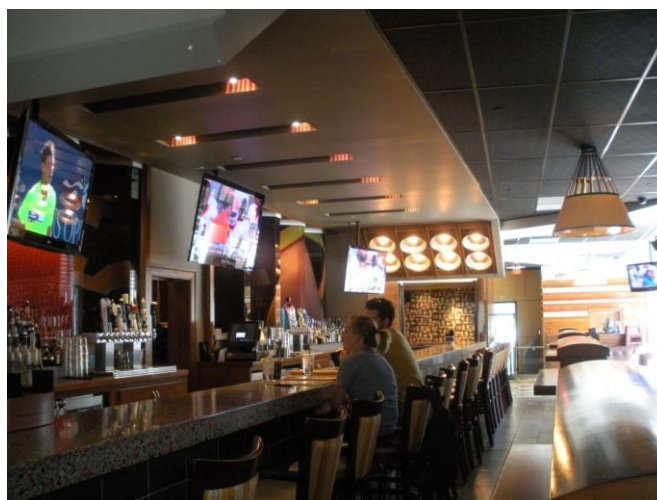


Image 5 – Sports bar

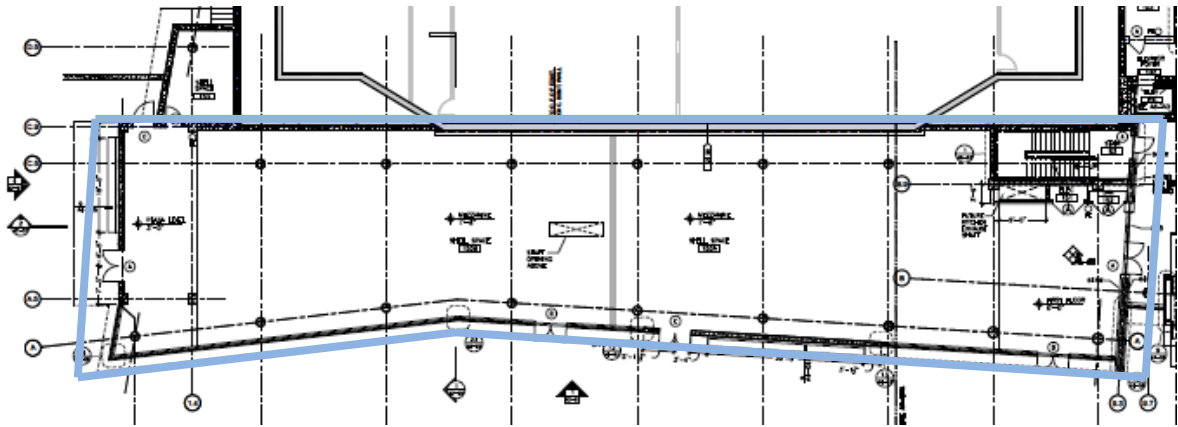



Figure 2 - Plan view of restaurant


Dimensions:

The restaurant and sports bar make up approximately 7100sf of the first floor area. Half of that is encompassed by the seating area with the rest being composed of back of the house support spaces. The floor to ceiling height is 10'-0". An elevation change of 1'-5" takes place at either entrance to the restaurant. The bar spans more than 30' of the restaurant's length.

Materials:

Please note that all materials are based purely upon observation as the restaurant was contracted out for architectural design and I have as of yet only received the electrical drawings for this space.

 Walls: The walls in the main stretch of restaurant are painted white GWB, standard. Behind the bar and along the northern side of the restaurant the walls are highly reflective and focal, one imprinted with the Drexel Dragon. In the intimate gathering space, the painted portion of the walls are both a deep charcoal and a medium olive green. The northernmost wall of the private area has panels of decorative glass frit.

 Floor: The floors appear to be covered using the same Shaw carpet tile as in the open office space across the majority with a reflective wood flooring in the bar area.

Base: The base appears to be a standard 4" base.

Ceiling: The ceiling is covered in black 2 x 2 acoustic ceiling tile with painted white gypsum wall board soffits spanning outward and across the ceiling from each column. An architectural ceiling feature is displayed above the bar to house the custom ceiling fixtures.

For the restaurant/sports bar I am going to propose three schematic lighting design concepts.

Circulation space | lobby/entrance

Description:

The lobby and main circulation entrance is the daylight feature space of the Daskalakis Athletic Center. The exposed concrete and almost floor to ceiling glazing on the southern façade create an exposed, bright, spacious impression. To check into the athletic facility, visitors must use the key-card accessibility entry past the security desk on the eastern end. The entrance is also accessible from this space at the western side. This makes this corridor the most traveled space in the project.

The main purpose of the corridor is purely circulation, although it does double as a student study/lounge area because of its convenient operating hours and brightness during the daylight hours. Security staff perform administrative duties such as paperwork and camera monitoring, as well as provide services to the students. The northern wall of the lobby has screened windows providing interesting views into the racquetball courts and central staircase.

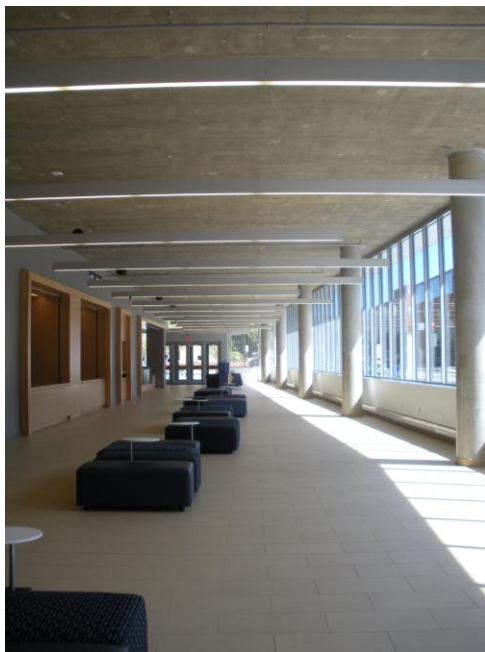


Image 5 – Lobby view facing east



Image 6 – Security desk



Image 7- Lobby view facing west

Dimensions:

The lobby measures approximately 180' x 20' and has a ceiling height of 14'.

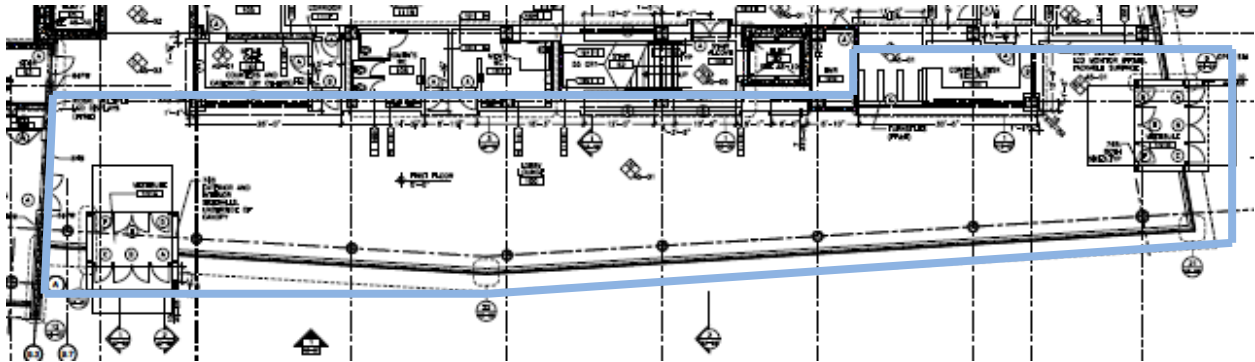





Figure 3 – Plan view of lobby

Materials and Finishes:

-  Walls: The walls are regular type painted gypsum wall board in Sherwin Williams Aloof Gray.
-  Floor: The flooring in the lobby is 1' x 2' Stone Source Logica tile in Grigio.
-  Base: The base is 1" x 1" Dal tile in Suede Grey.

Ceiling: The ceiling is completely exposed concrete, except over the security desk, where the ceiling is 12' dropped wood paneling.

For the lobby/circulation area I am going to apply a Flynn impression, focusing on public vs. private.

outdoor space | building façade

Description:

The building façade is the highlight and focus of the Daskalakis Athletic Center design. Spanning a full city block on Market Street, the busiest East/West thoroughway of University City, the strong lines and sharp angles of the glazing/aluminum paneling façade combine for a bold, modern play on transparency and concealment. I will be focusing on the south and east façades.



Image 8 - South building facade



Image 9 - East building facade

Dimensions:

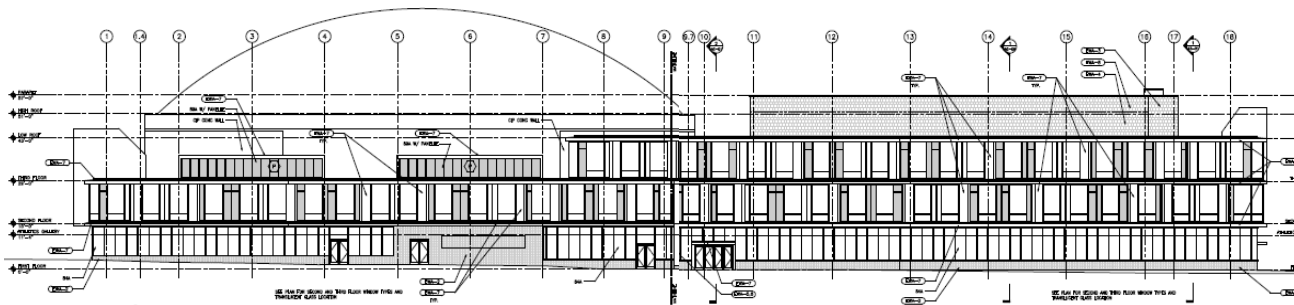


Figure 4 – South elevation

The south façade of the building is 47' high on the east end and 29' high on the west end. The high roof on the east façade measures 51'. The east façade is 140' long, and the south façade spans 375'.

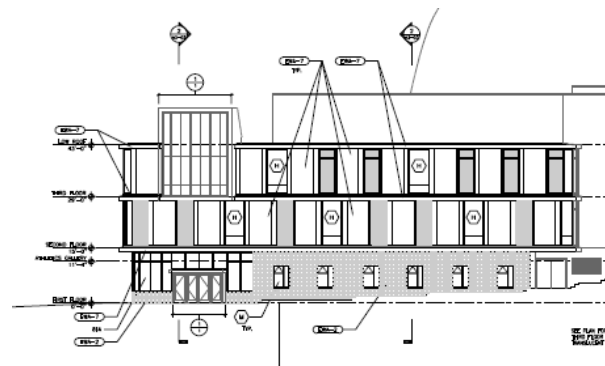


Figure 5 - East elevation

Materials:

The south and east facades are composed of an aluminum window and curtain wall system with aluminum sheet metal flashing. The north façade is comprised of a slate shingle wall system combined with metal plates.

possible daylighting focus | gymnasium

For an additional daylighting portion of my thesis, I am considering studying the gymnasium. The 27' tall space consists of a basketball court with an elevated perimeter track. The north façade is made almost entirely of exterior glazing, while the majority of the interior southern wall is composed of interior glazing.



Image 10 - Gymnasium