

City of Green
Administration Building

Brian Koze
November 12, 2010



Lighting Schematic Design Presentation

Building Statistics

- Location
 - City of Green, Ohio
- Occupant
 - City of Green Administration
- Size
 - 53,671 Gross Square Feet
- Levels
 - Three total, two above grade
- Cost
 - 8.2 Million USD
- Date of Construction
 - August 2008 – October 2009



Project Team

- Architect
 - Hasenstab Architects Inc.
- MEP Engineer
 - Scheeser & Buckley Mayfield, LLC
- Construction Manager
 - Welty Building Company
- Civil Engineer
 - Floyd Brown Group

Occupancy and General Building Layout

- City Administrative Offices
 - Engineering, Planning & Development, Human Resources, etc.
- Green Local School's Administration



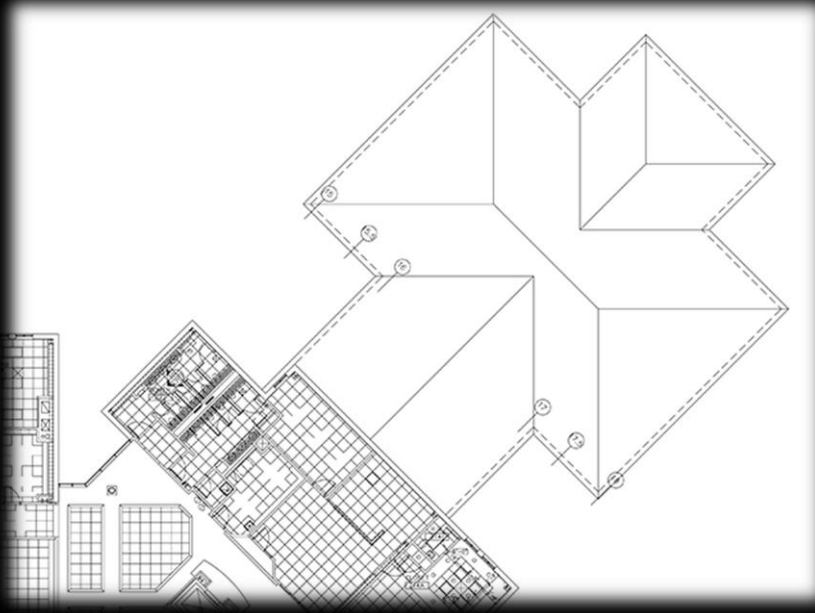
Occupancy and General Building Layout

- **City Administrative Offices**
 - Engineering, Planning & Development, Human Resources, etc.
- Green Local School's Administration



Occupancy and General Building Layout

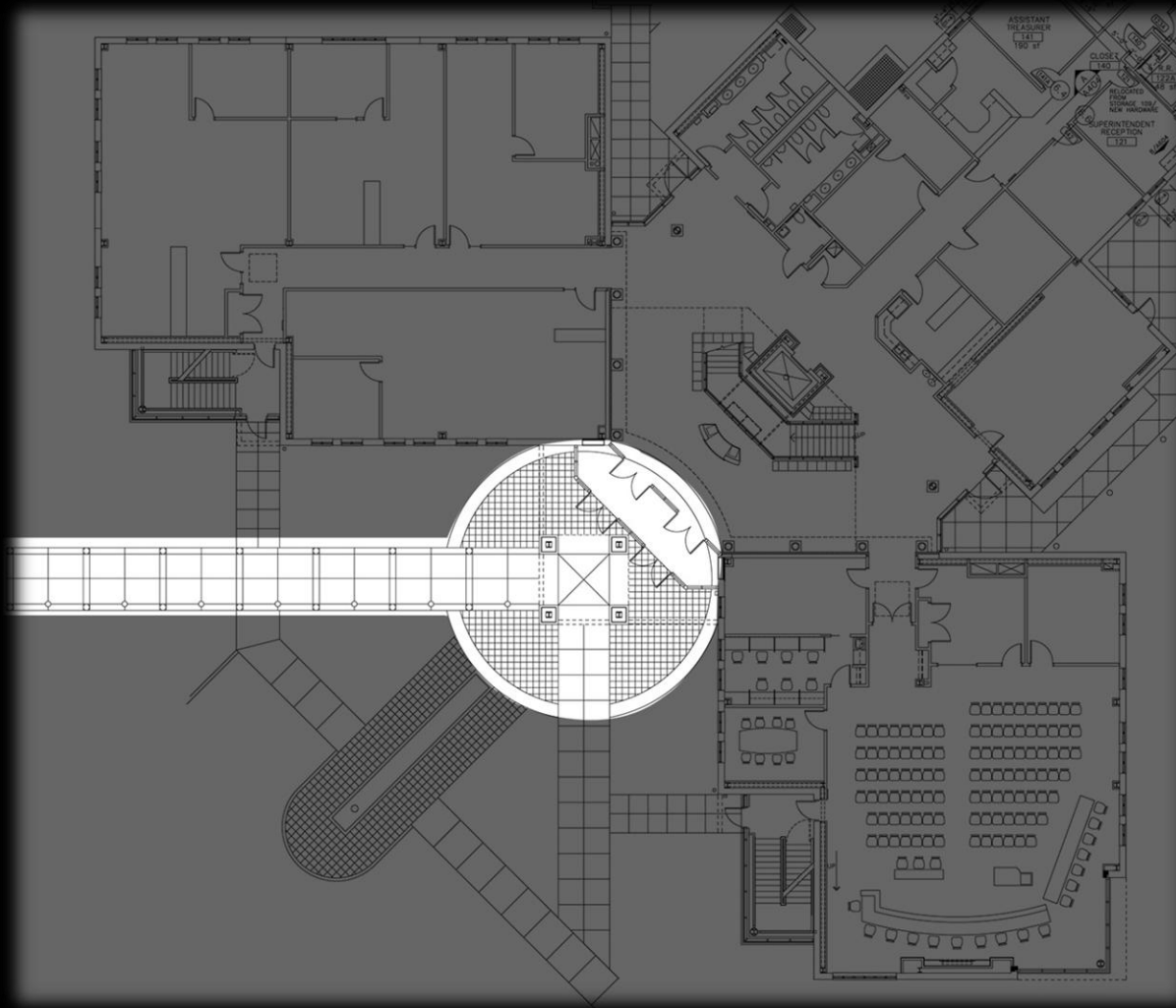
- City Administrative Offices
 - Engineering, Planning & Development, Human Resources, etc.
- **Green Local School's Administration**



- Visually pleasing and functional
- Improve appearance of architecture
- Relate spaces
- Guide and direct occupants

- Entrance Structure
- Main Lobby
- Council Chambers
- Planning & Engineering Workspace

Space Introduction: Entrance Structure



Ground Floor Plan

[Introduction](#)

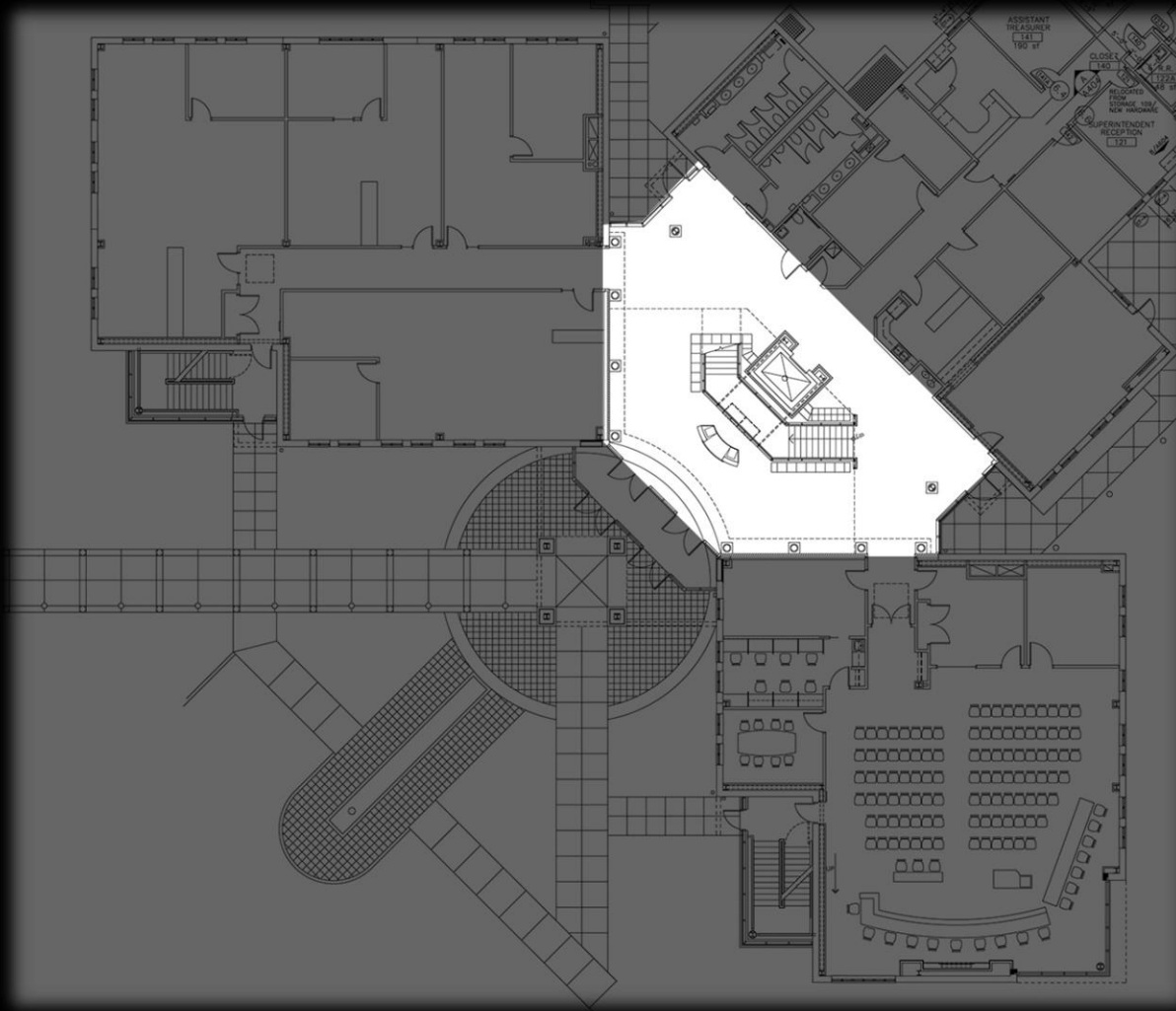
[Entrance Structure](#)

[Main Lobby](#)

[Council Chambers](#)

[Workspace](#)

Space Introduction: Main Lobby



Ground Floor Plan

[Introduction](#)

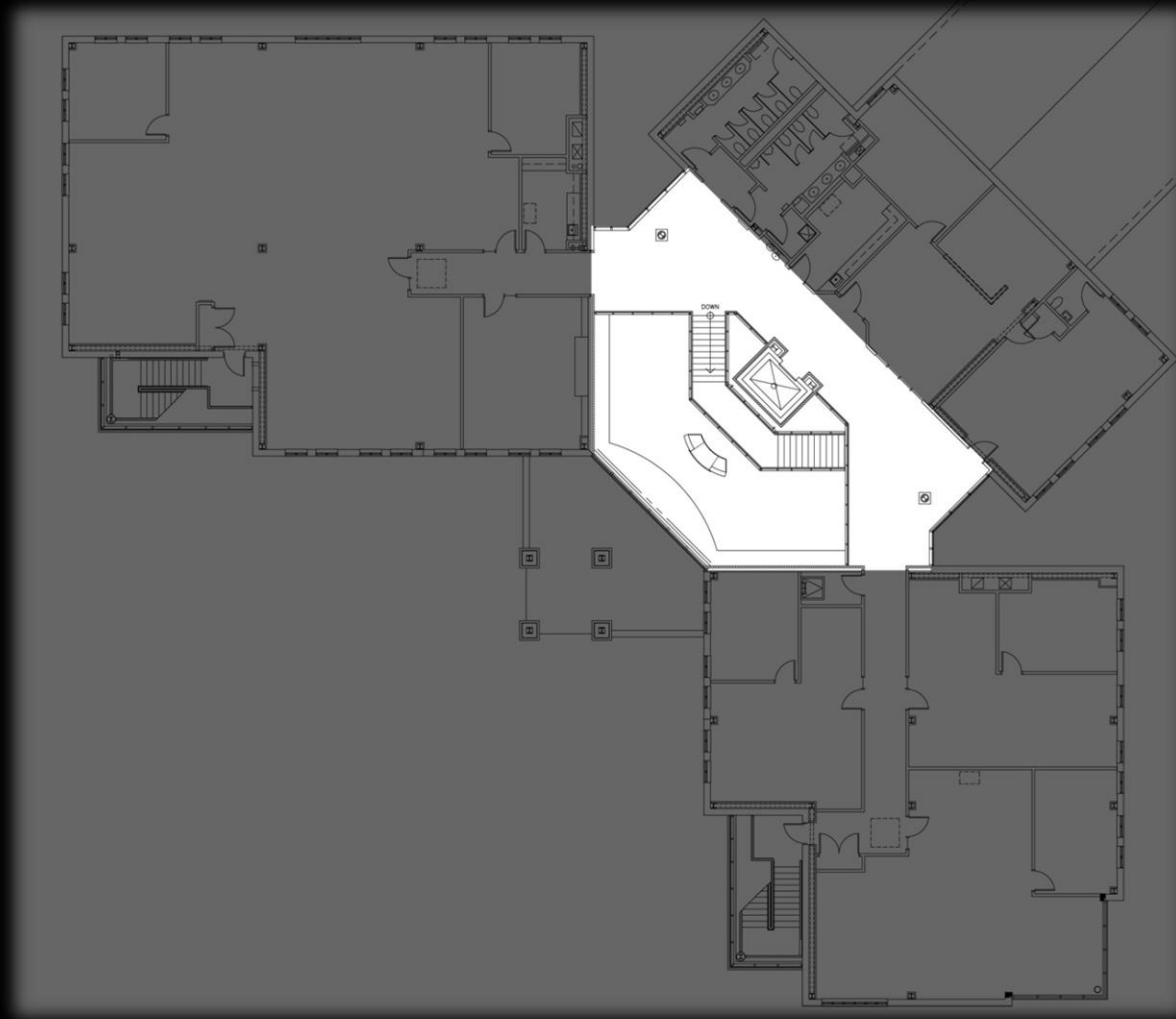
[Entrance Structure](#)

[Main Lobby](#)

[Council Chambers](#)

[Workspace](#)

Space Introduction: Main Lobby



Second Floor Plan

[Introduction](#)

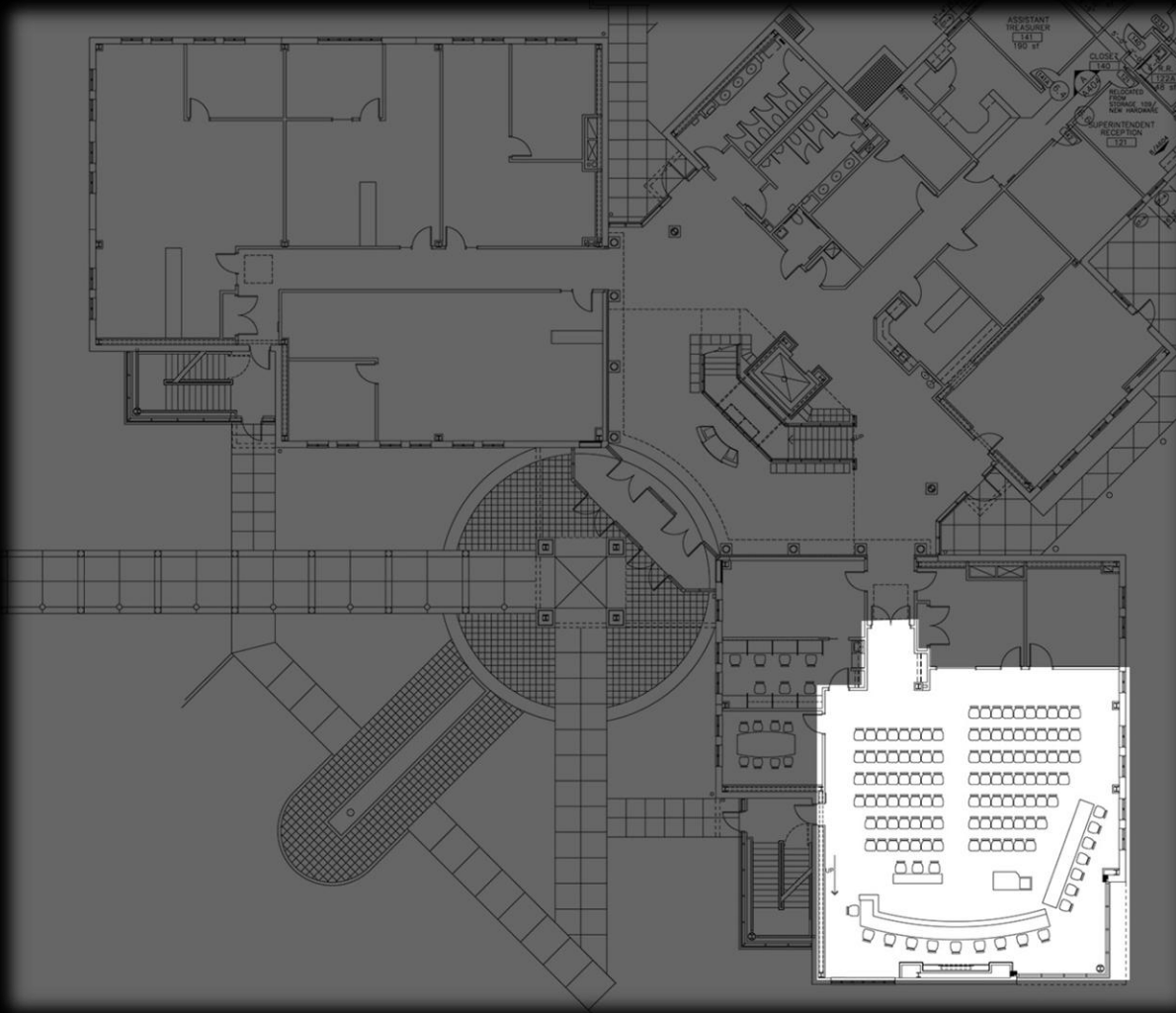
[Entrance Structure](#)

[Main Lobby](#)

[Council Chambers](#)

[Workspace](#)

Space Introduction: Council Chambers



Ground Floor Plan

[Introduction](#)

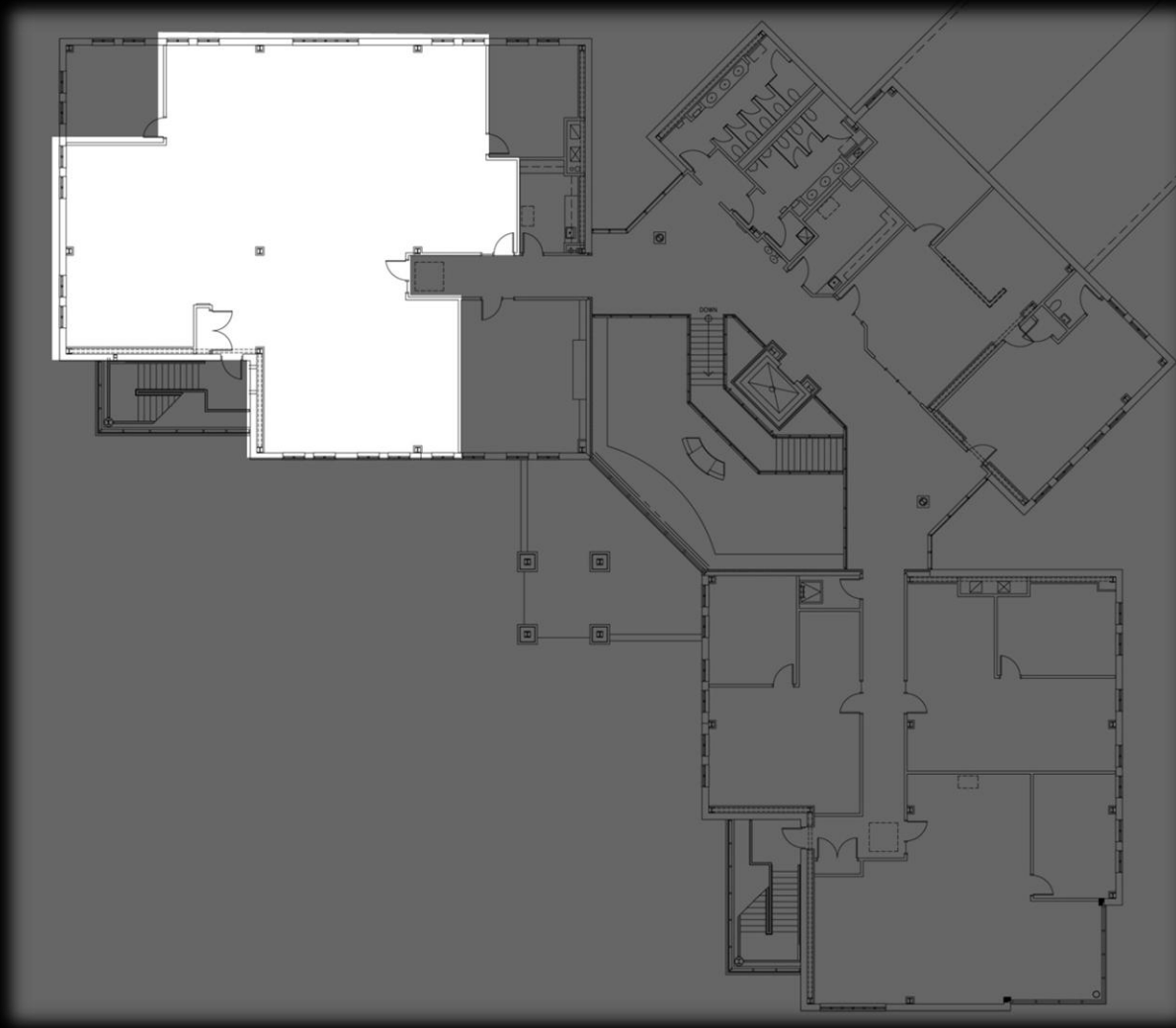
[Entrance Structure](#)

[Main Lobby](#)

[Council Chambers](#)

[Workspace](#)

Space Introduction: Planning & Engineering Workspace



Second Floor Plan

Introduction

Entrance Structure

Main Lobby

Council Chambers

Workspace

Entrance Structure



Introduction

Entrance Structure

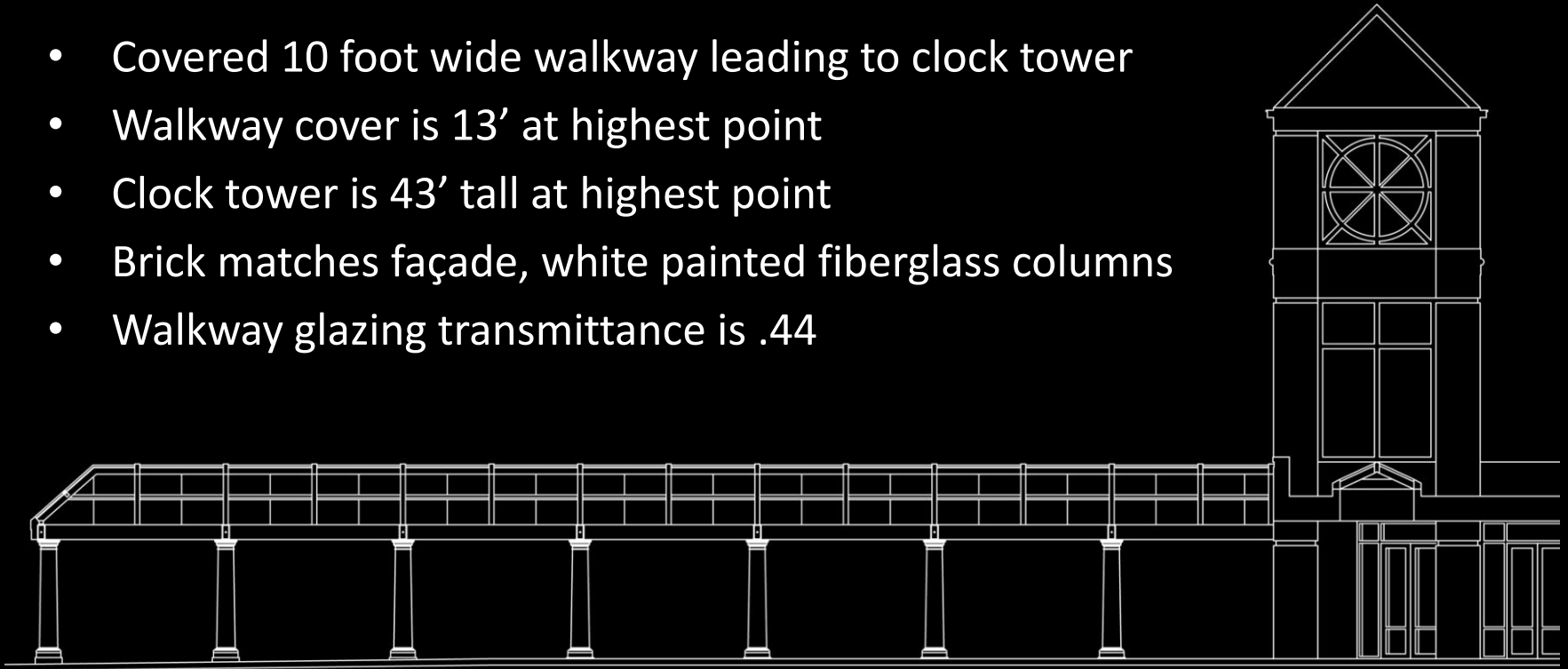
Main Lobby

Council Chambers

Workspace

Description

- Covered 10 foot wide walkway leading to clock tower
- Walkway cover is 13' at highest point
- Clock tower is 43' tall at highest point
- Brick matches façade, white painted fiberglass columns
- Walkway glazing transmittance is .44



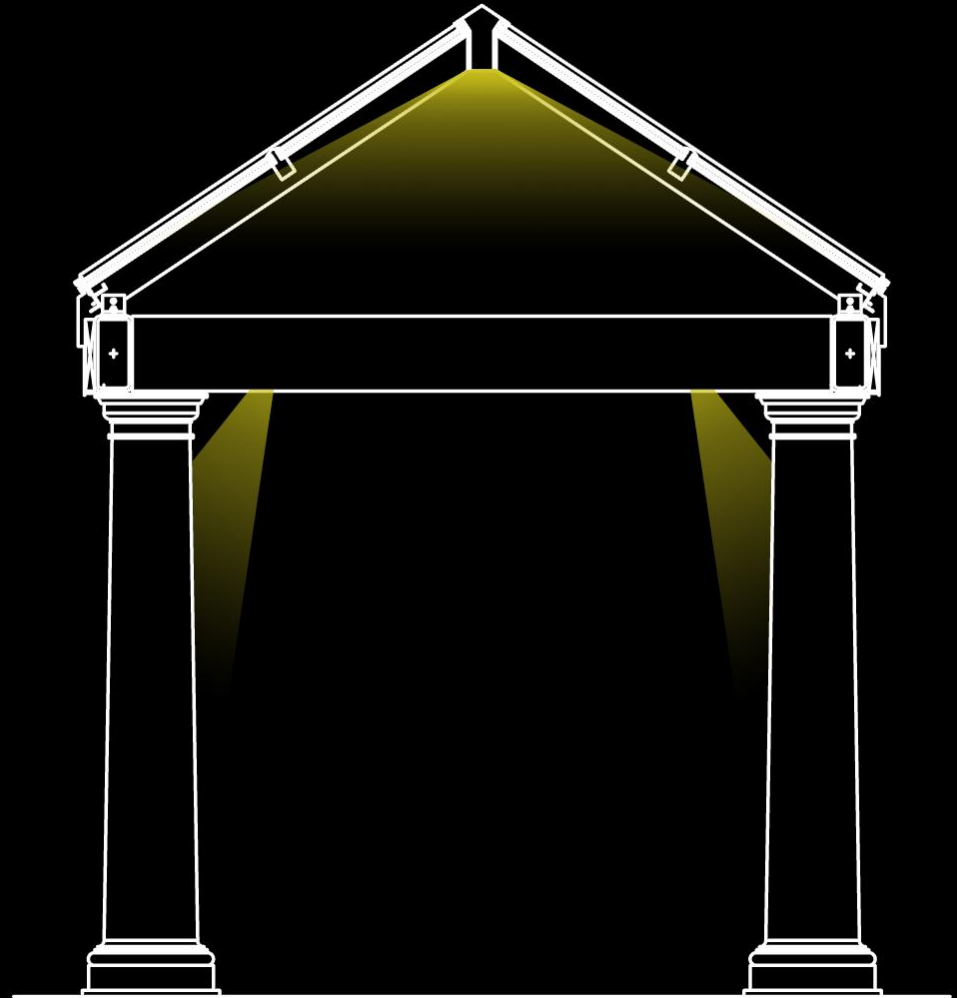
- Section Of Walkway and Tower

Lighting Design Criteria

- Highlight points of interest
 - Clock tower and walkway leading to entrance
- Guide occupants into the building
- Avoid direct and reflected glare from luminaires
- Reduce light pollution

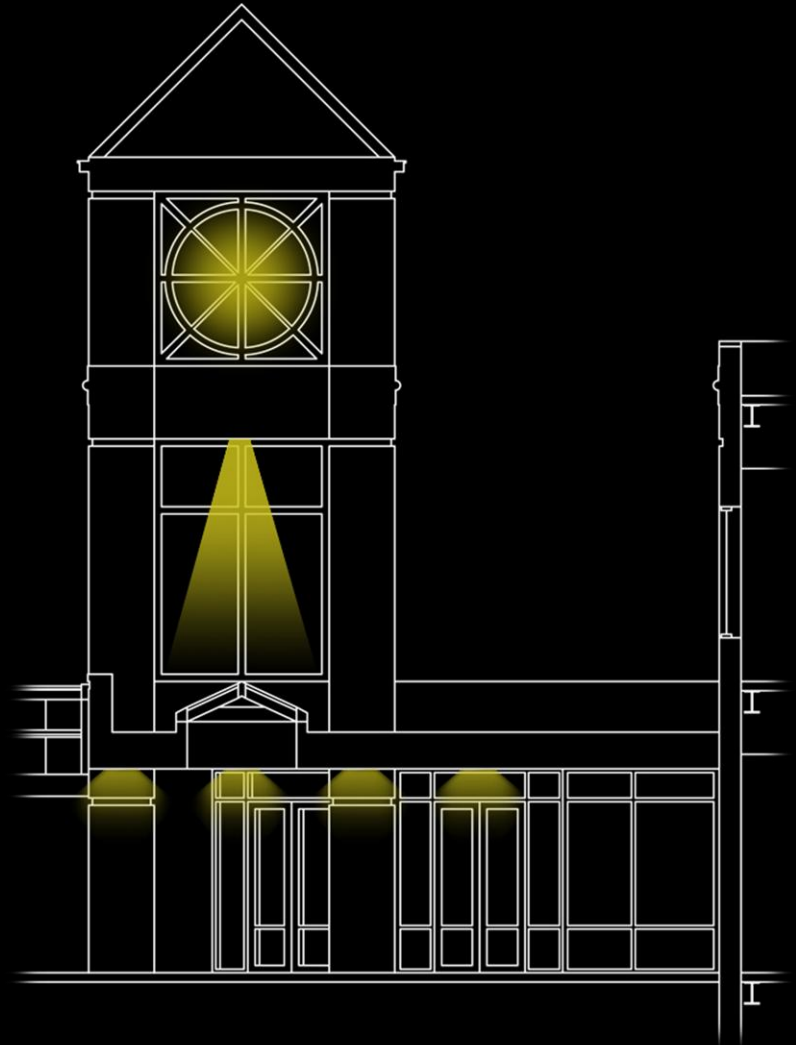
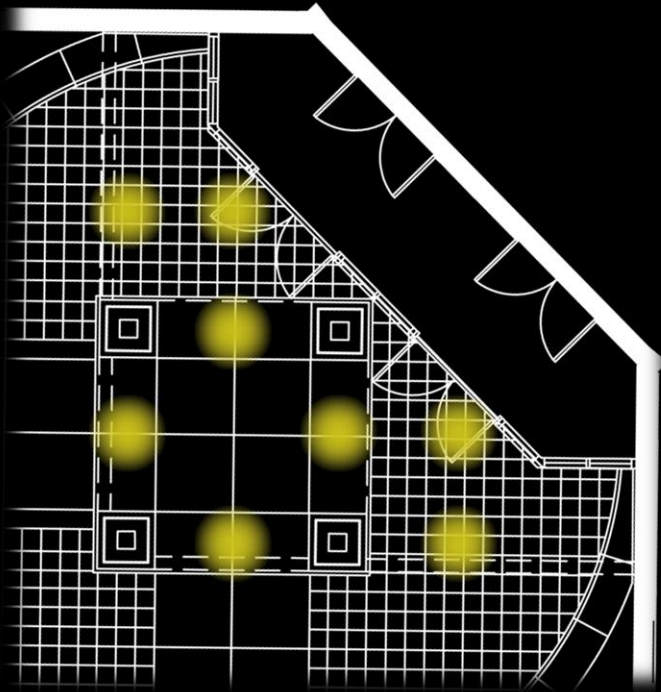
Schematic Design

- Luminance contrast
- Inside to out
- Complements Architecture



Schematic Design

- Luminance contrast
- Inside to out
- Complements Architecture



Introduction

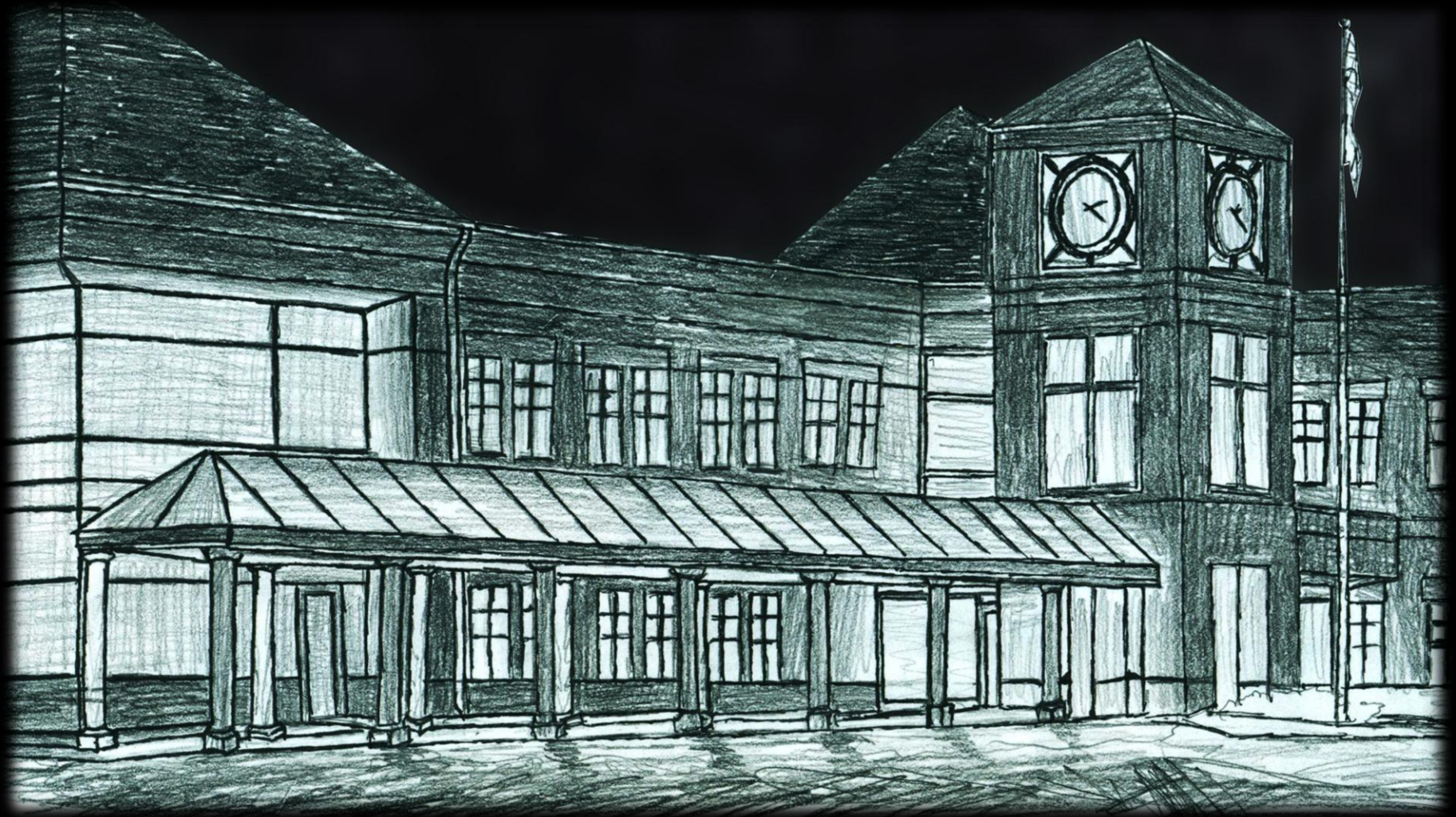
Entrance Structure

Main Lobby

Council Chambers

Workspace

Schematic Design



Introduction

Entrance Structure

Main Lobby

Council Chambers

Workspace

Main Lobby



Introduction

Entrance Structure

Main Lobby

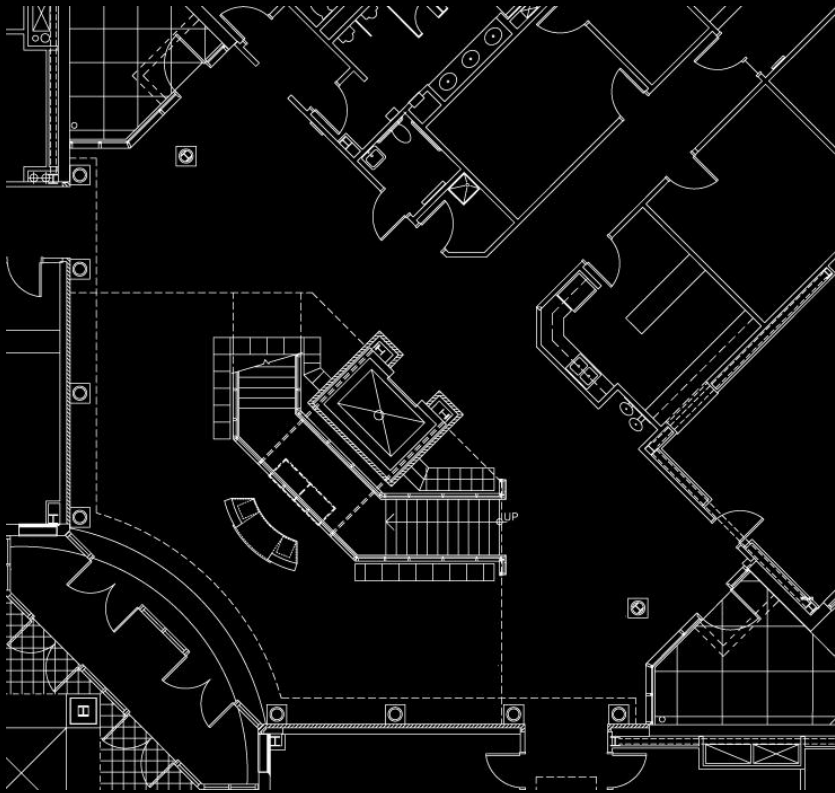
Council Chambers

Workspace

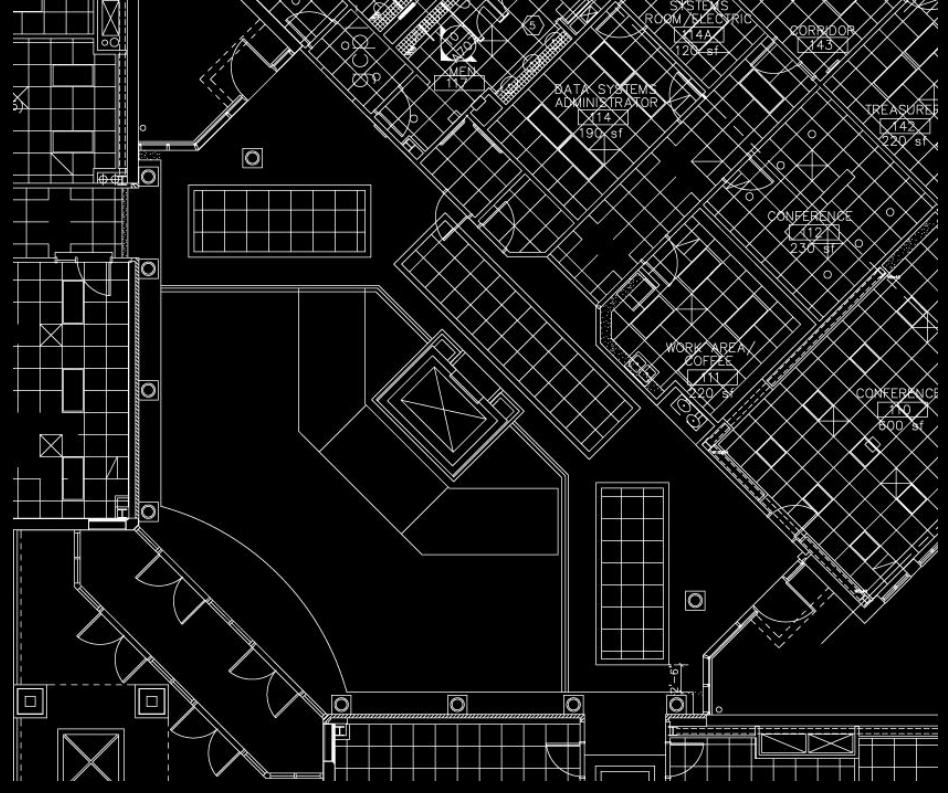
Description

- Introduces occupant to interior spaces
- Pulls together three wings of building
- 2 stories
- Spiral staircase surrounding central elevator
- Skylight

Description



Ground Floor
Plan



Reflected
Ceiling Plan

Introduction

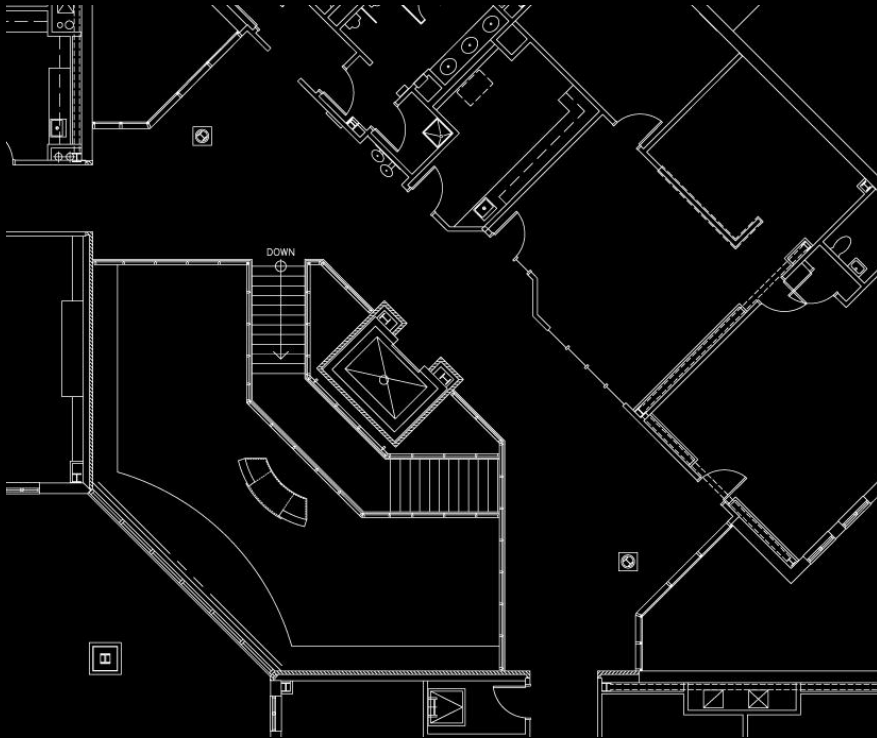
Entrance Structure

Main Lobby

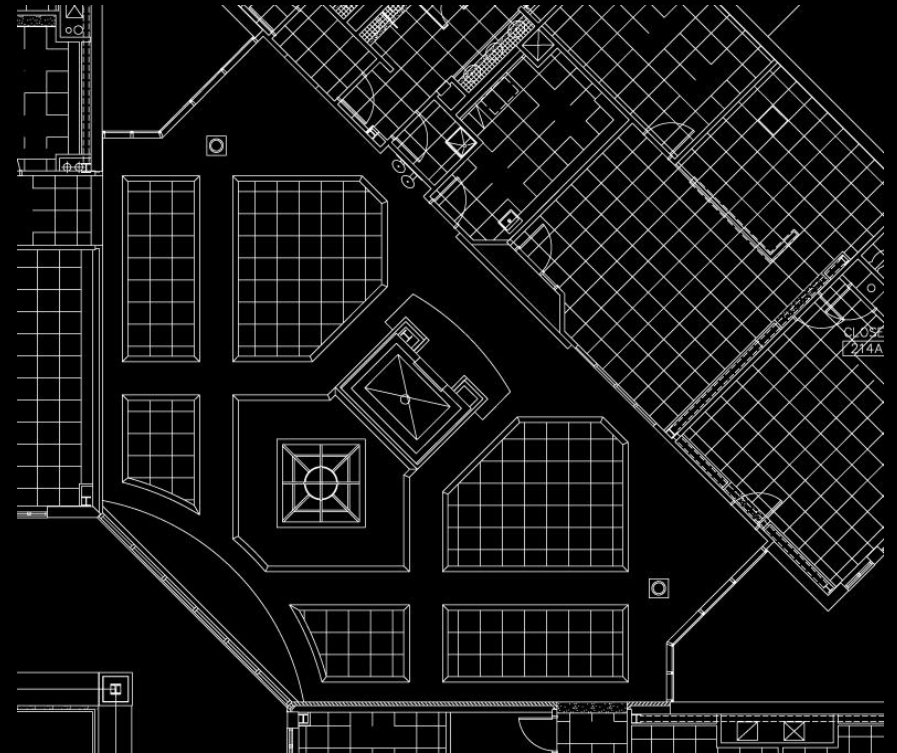
Council Chambers

Workspace

Description



Second Floor
Plan



Reflected
Ceiling Plan

Introduction

Entrance Structure

Main Lobby

Council Chambers

Workspace

Lighting Design Criteria

- Create a psychological impression of spaciousness
- Use distribution of light on surfaces to guide occupants
- Luminance contrast of and appearance of surfaces

Schematic Design



Introduction

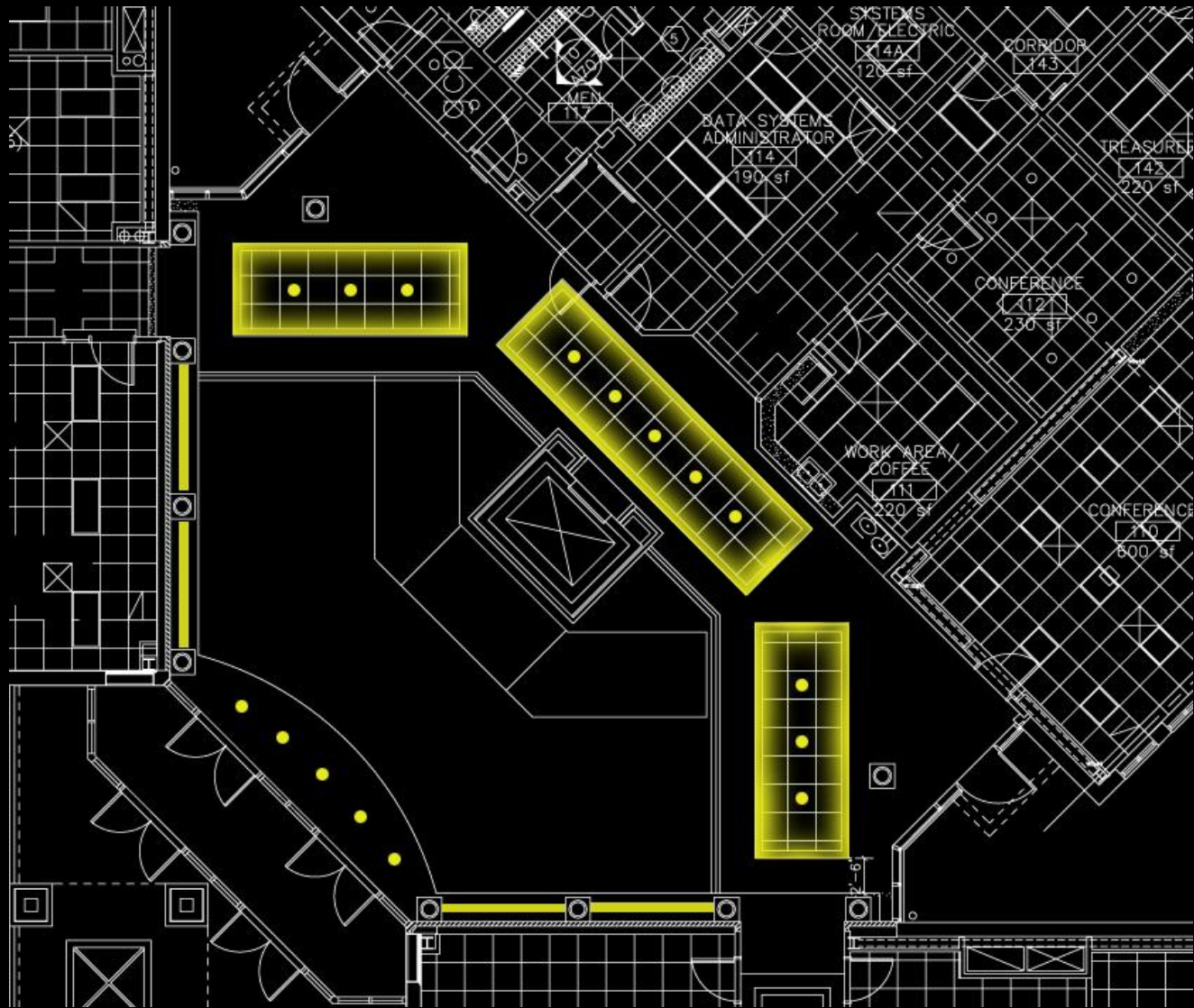
Entrance Structure

Main Lobby

Council Chambers

Workspace

Schematic Design



Introduction

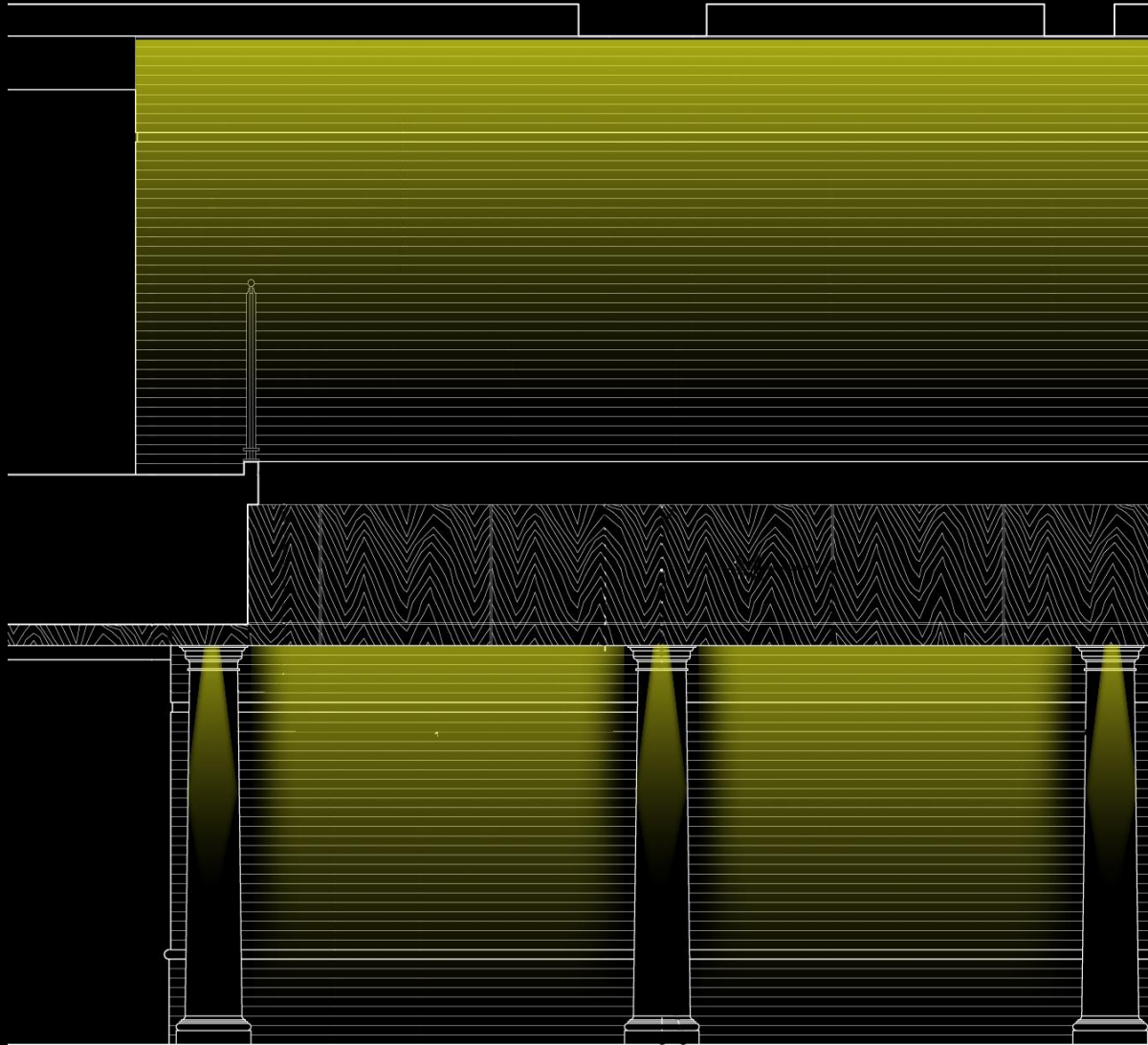
Entrance Structure

Main Lobby

Council Chambers

Workspace

Schematic Design



Introduction

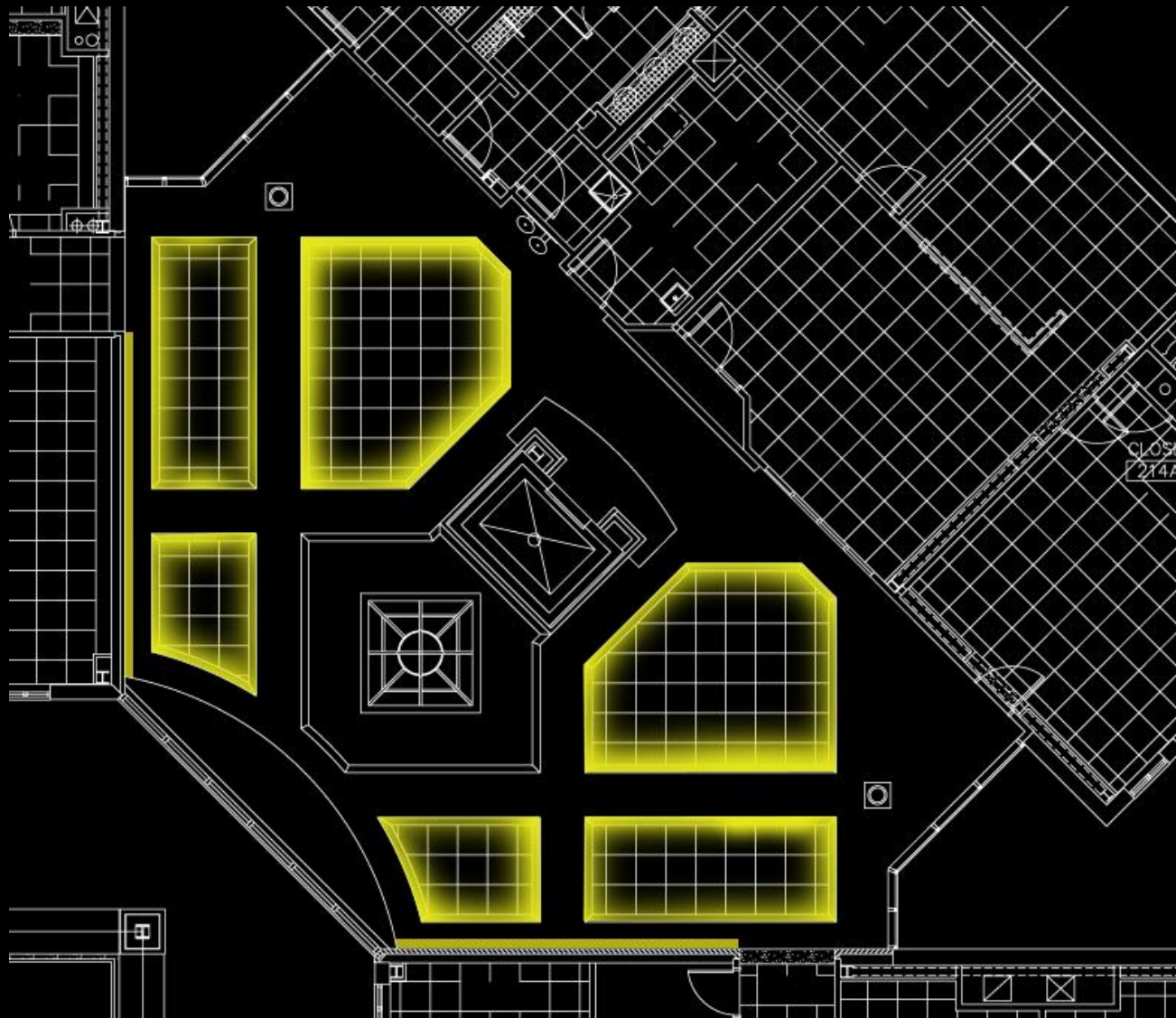
Entrance Structure

Main Lobby

Council Chambers

Workspace

Schematic Design



Introduction

Entrance Structure

Main Lobby

Council Chambers

Workspace

Council Chambers

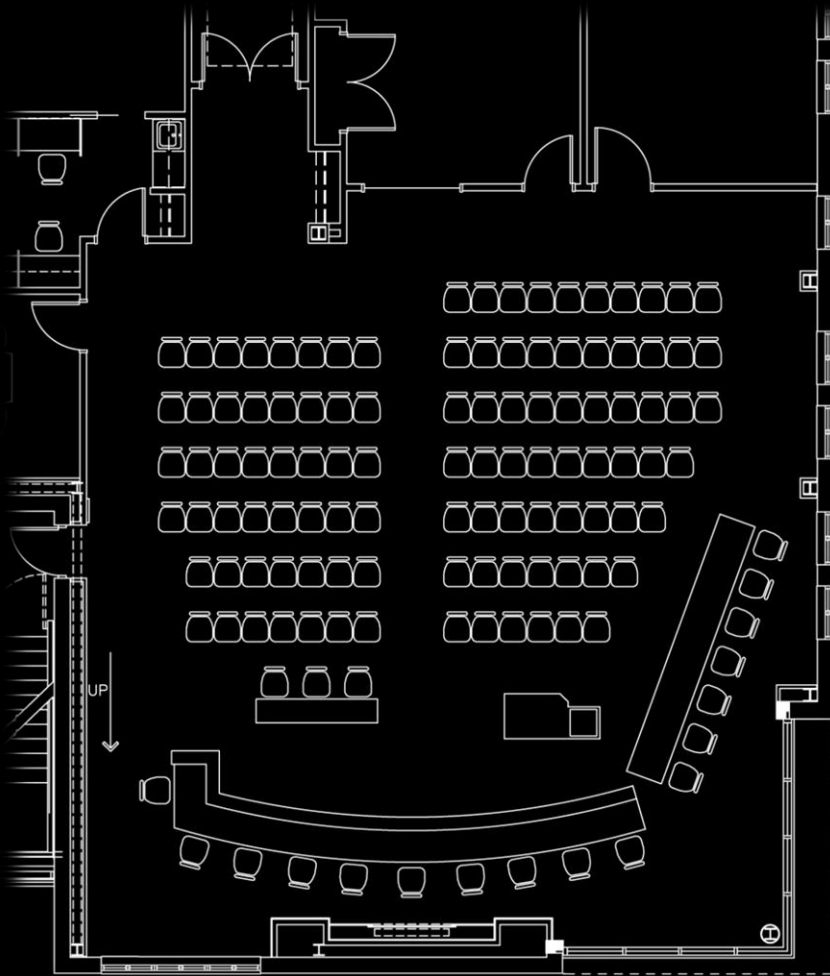
- Three Schematic Designs



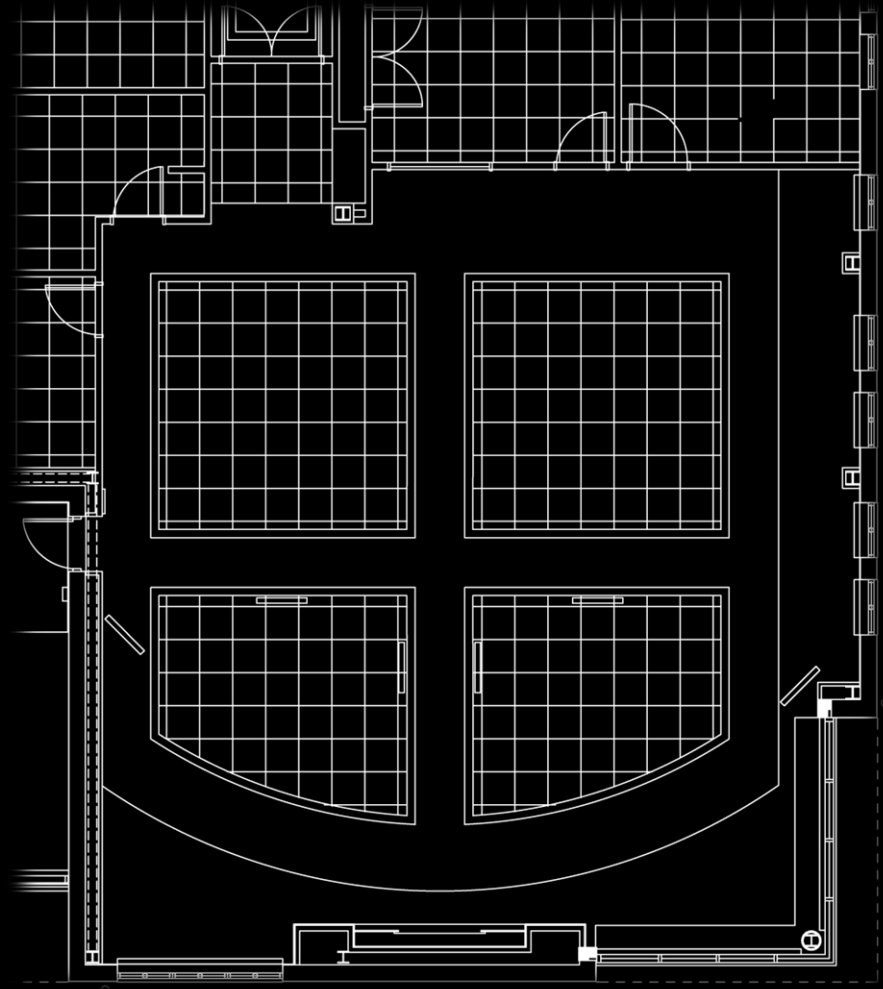
Description

- Space for large meetings, sometimes televised
- 2,060 SF
- Seating for 109 audience members and 17 officials
- Three different ceiling heights
- Ceiling materials are white GWB and acoustic ceiling tile
- Wood paneling on perimeter walls

Description



Floor Plan



Reflected Ceiling Plan

Introduction

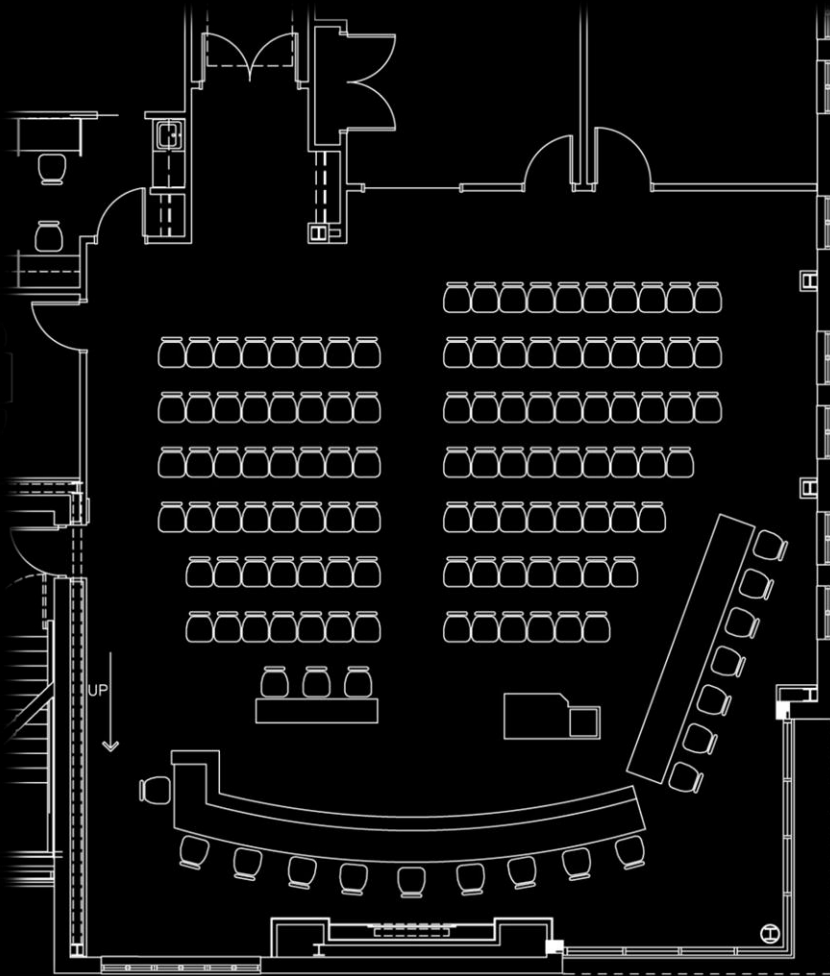
Entrance Structure

Main Lobby

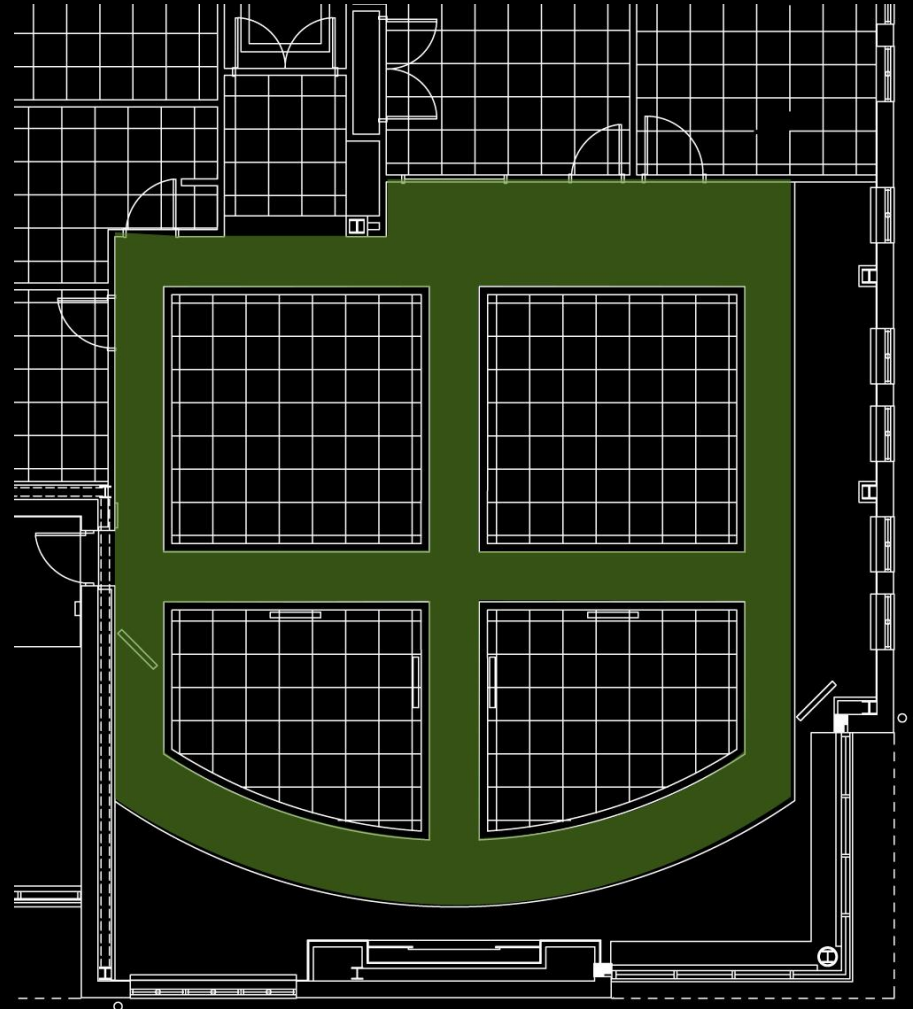
Council Chambers

Workspace

Description



Floor Plan



9'-4" Ceiling

Introduction

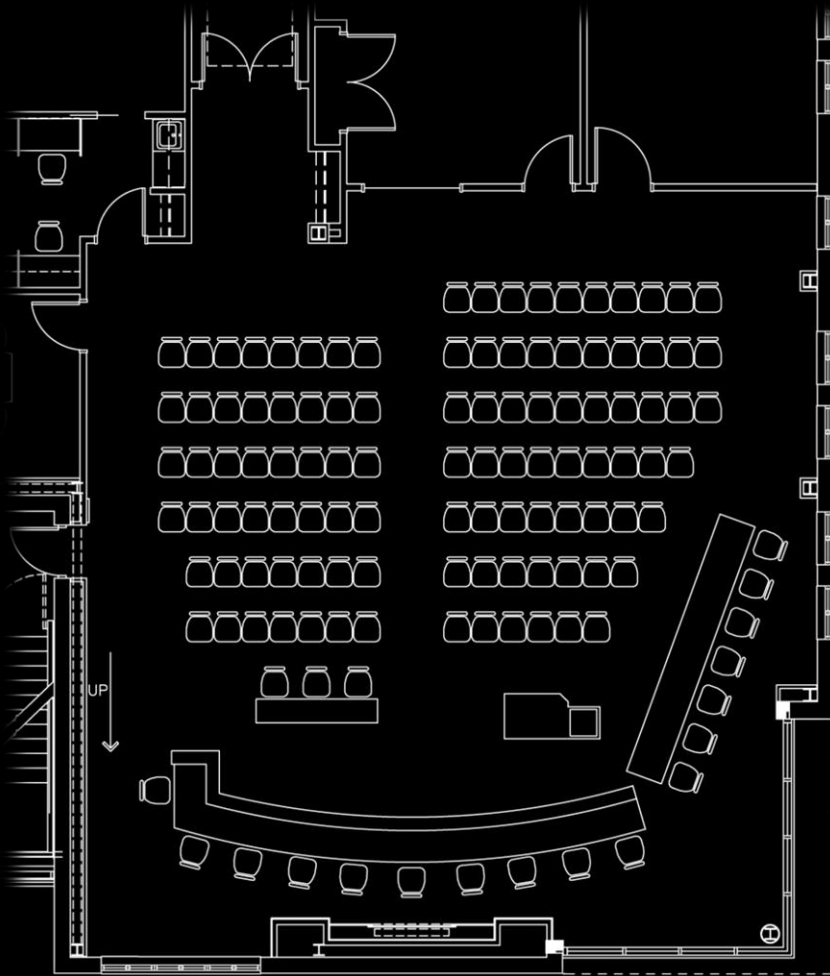
Entrance Structure

Main Lobby

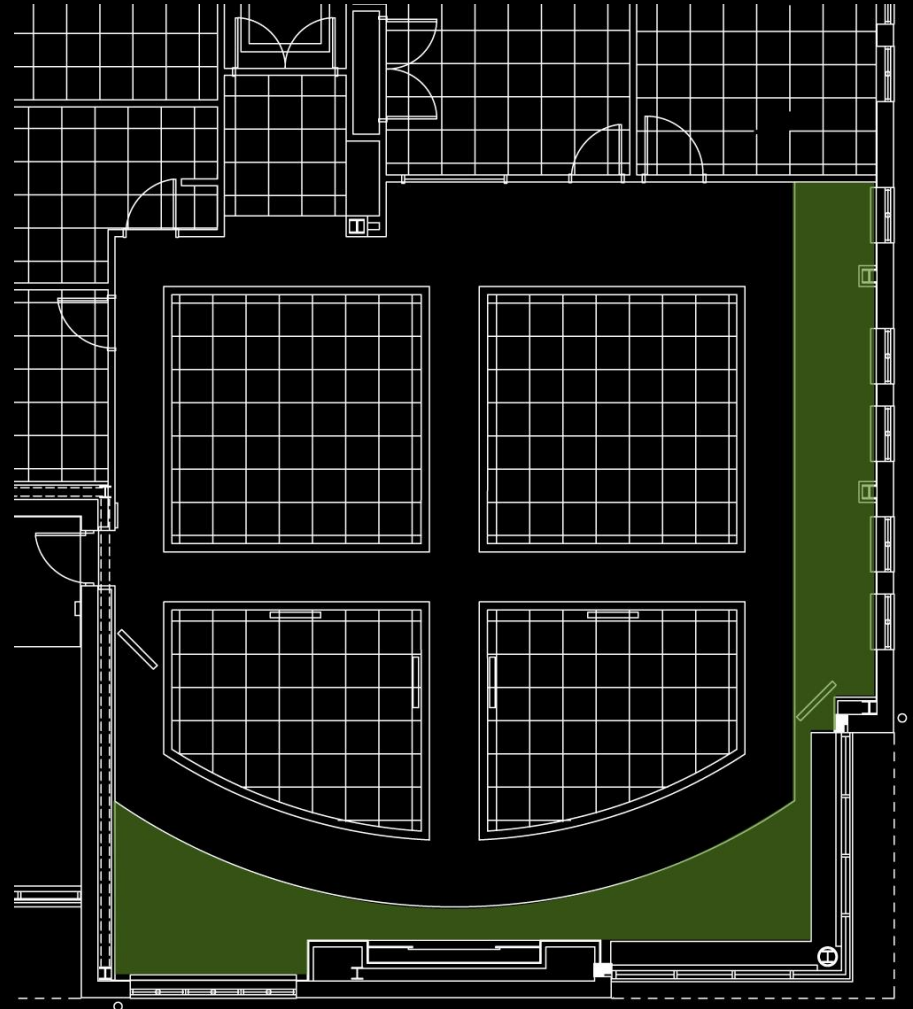
Council Chambers

Workspace

Description



Floor Plan



10'-4" Ceiling

Introduction

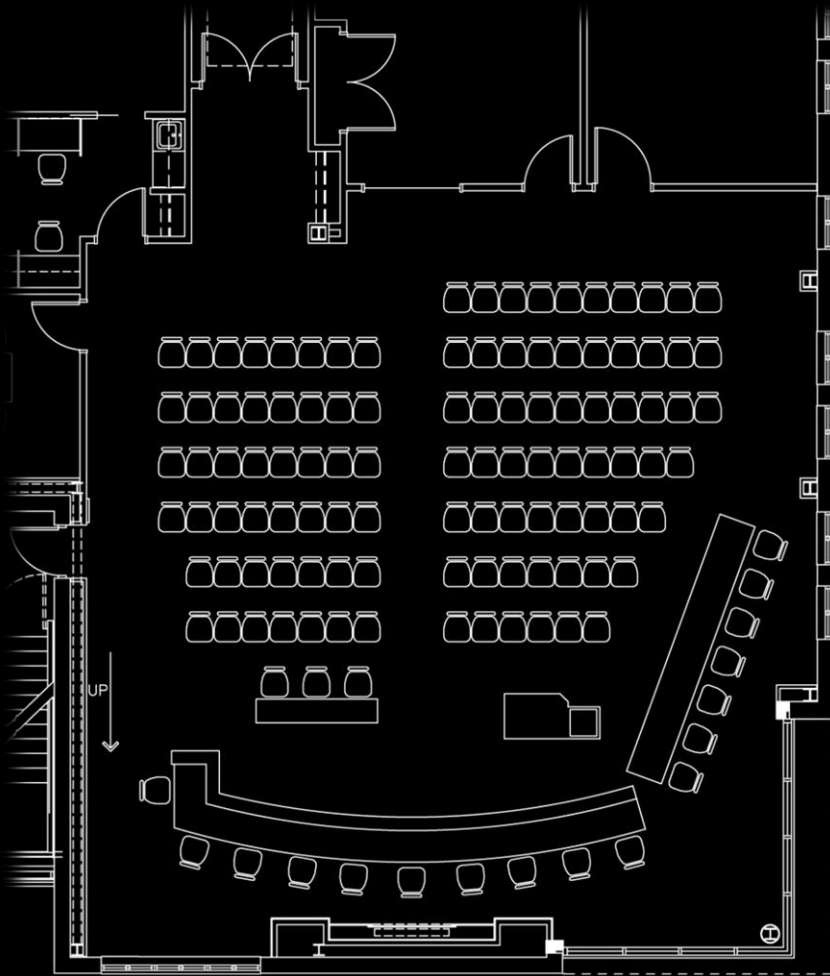
Entrance Structure

Main Lobby

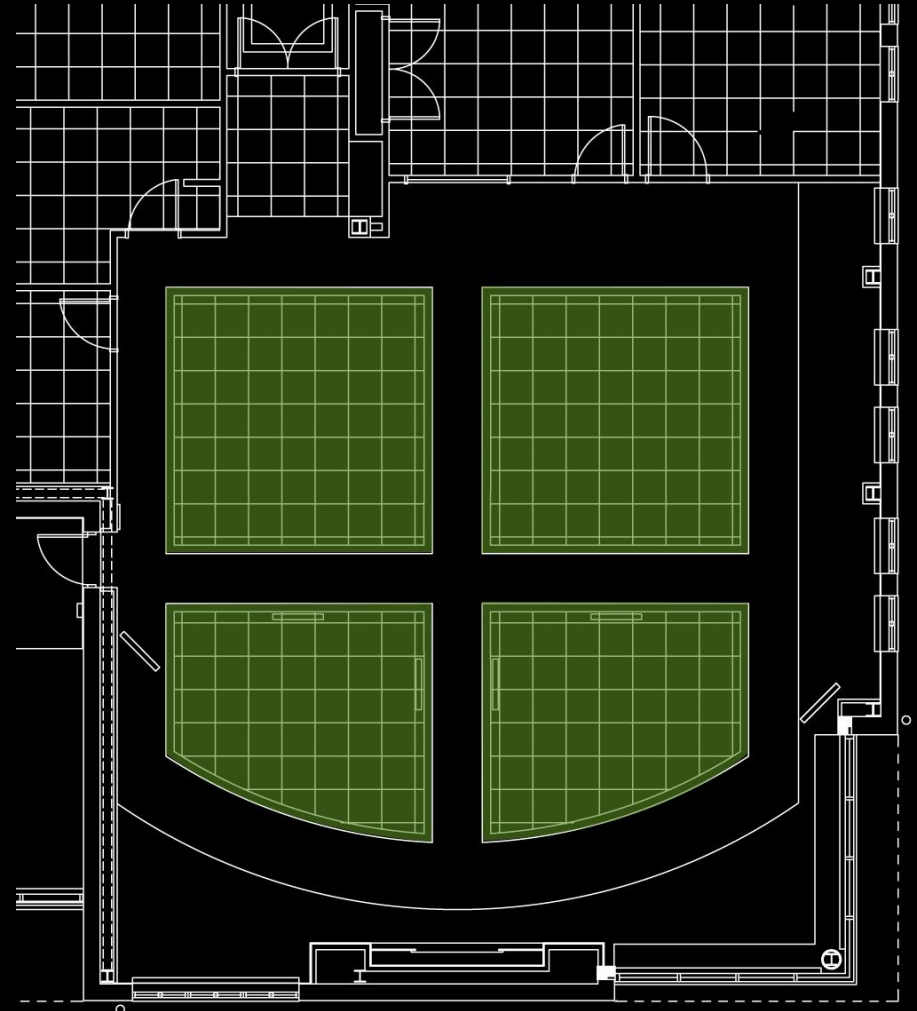
Council Chambers

Workspace

Description



Floor Plan



11' Ceiling

Introduction

Entrance Structure

Main Lobby

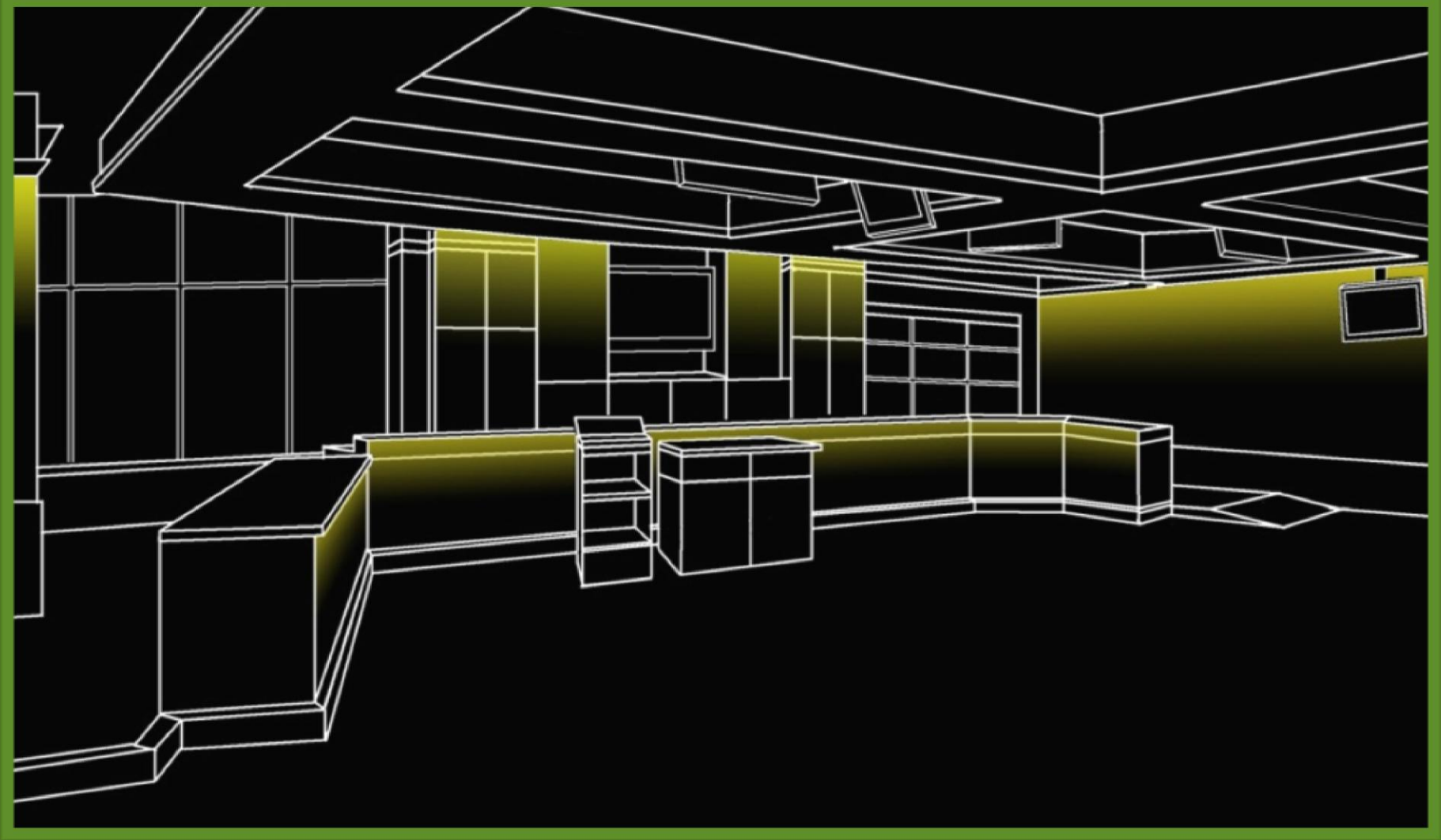
Council Chambers

Workspace

Lighting Design Criteria

- Minimize glare for cameras, television screens, and speakers
- Flexible control system
- Enhance spaces architectural appearance
- Vertical illuminance
- Reinforce professional nature of the chamber

Schematic Design



Introduction

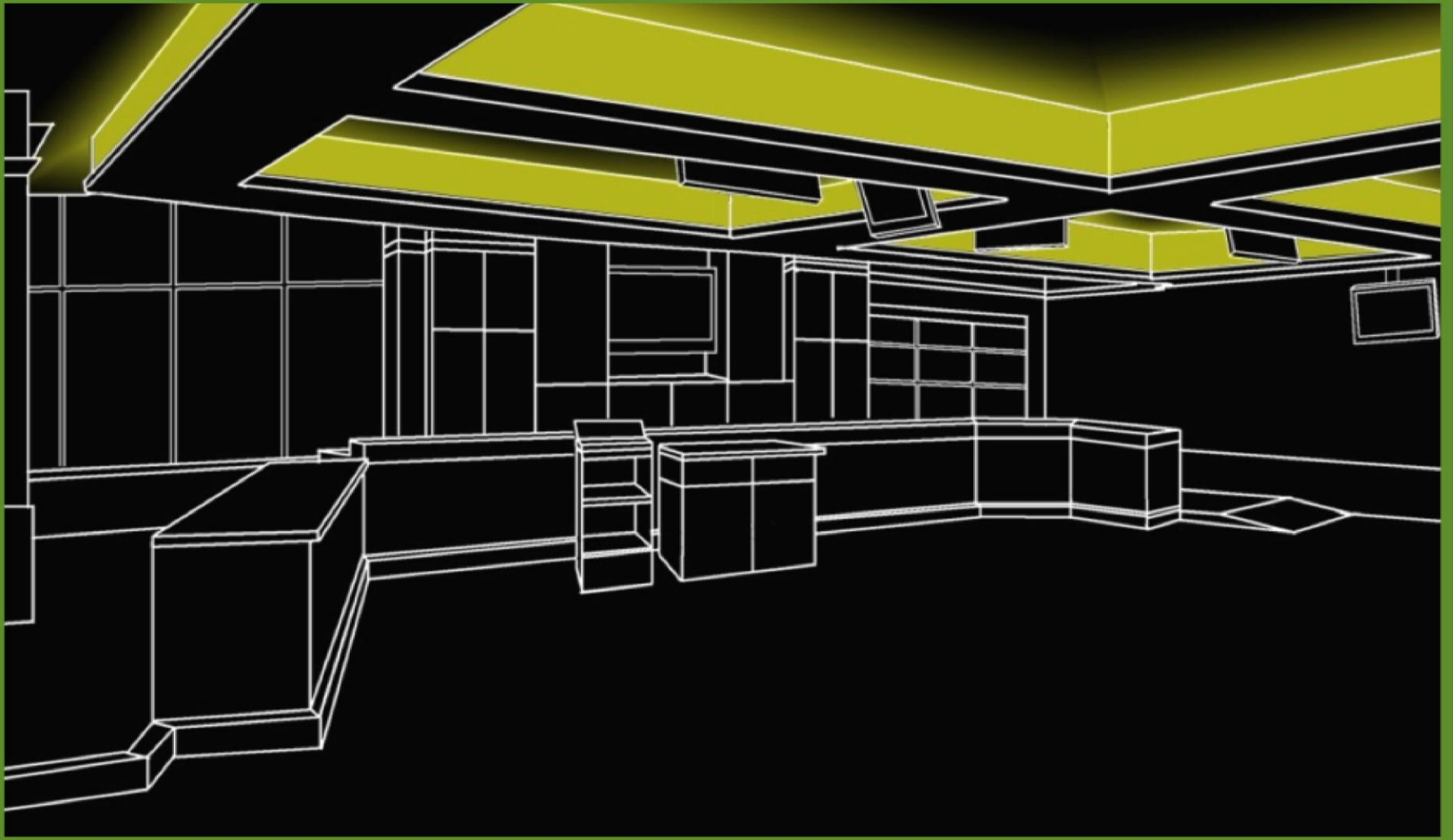
Entrance Structure

Main Lobby

Council Chambers

Workspace

Schematic Design



Introduction

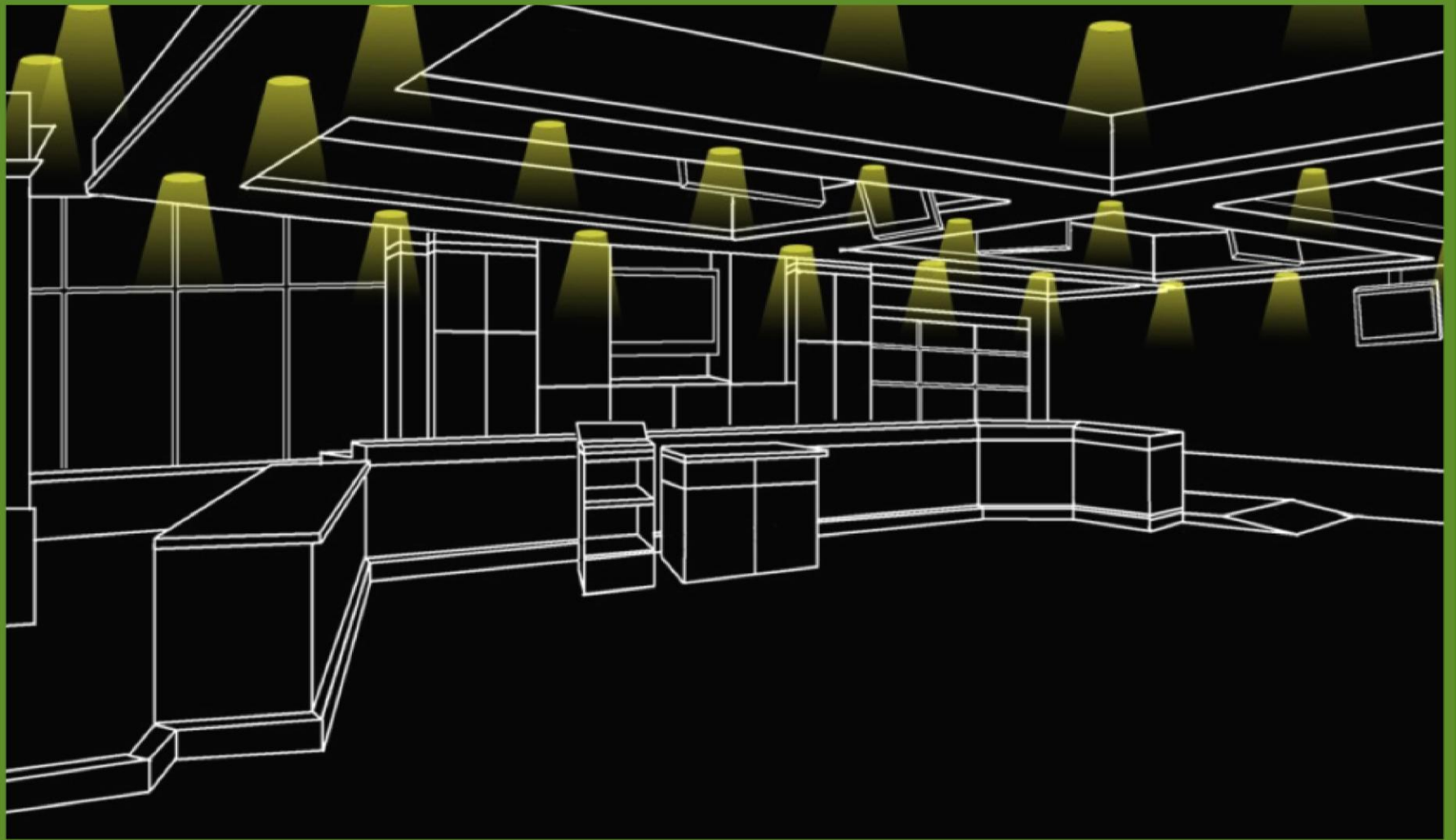
Entrance Structure

Main Lobby

Council Chambers

Workspace

Schematic Design



Introduction

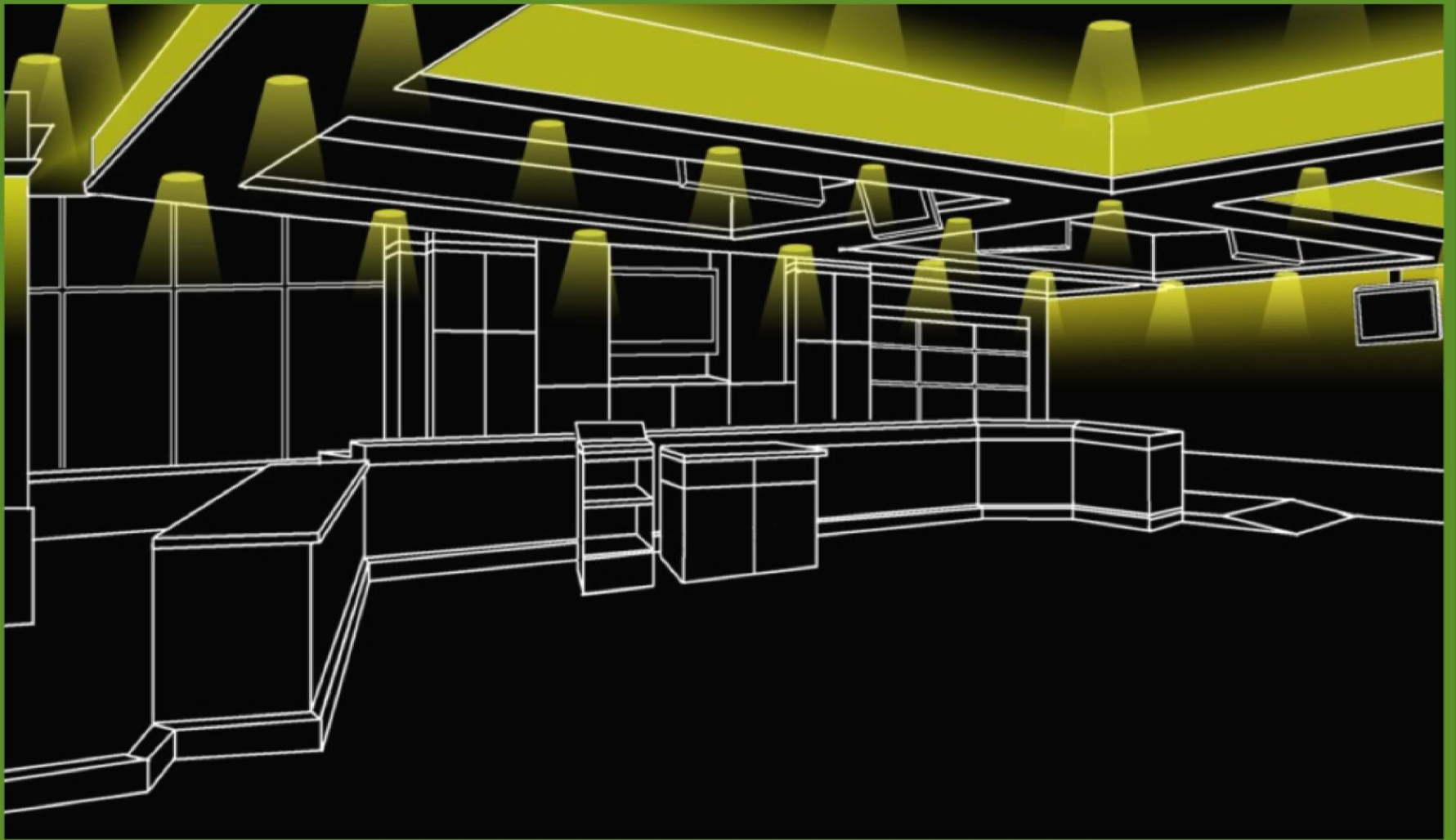
Entrance Structure

Main Lobby

Council Chambers

Workspace

Schematic Design



Introduction

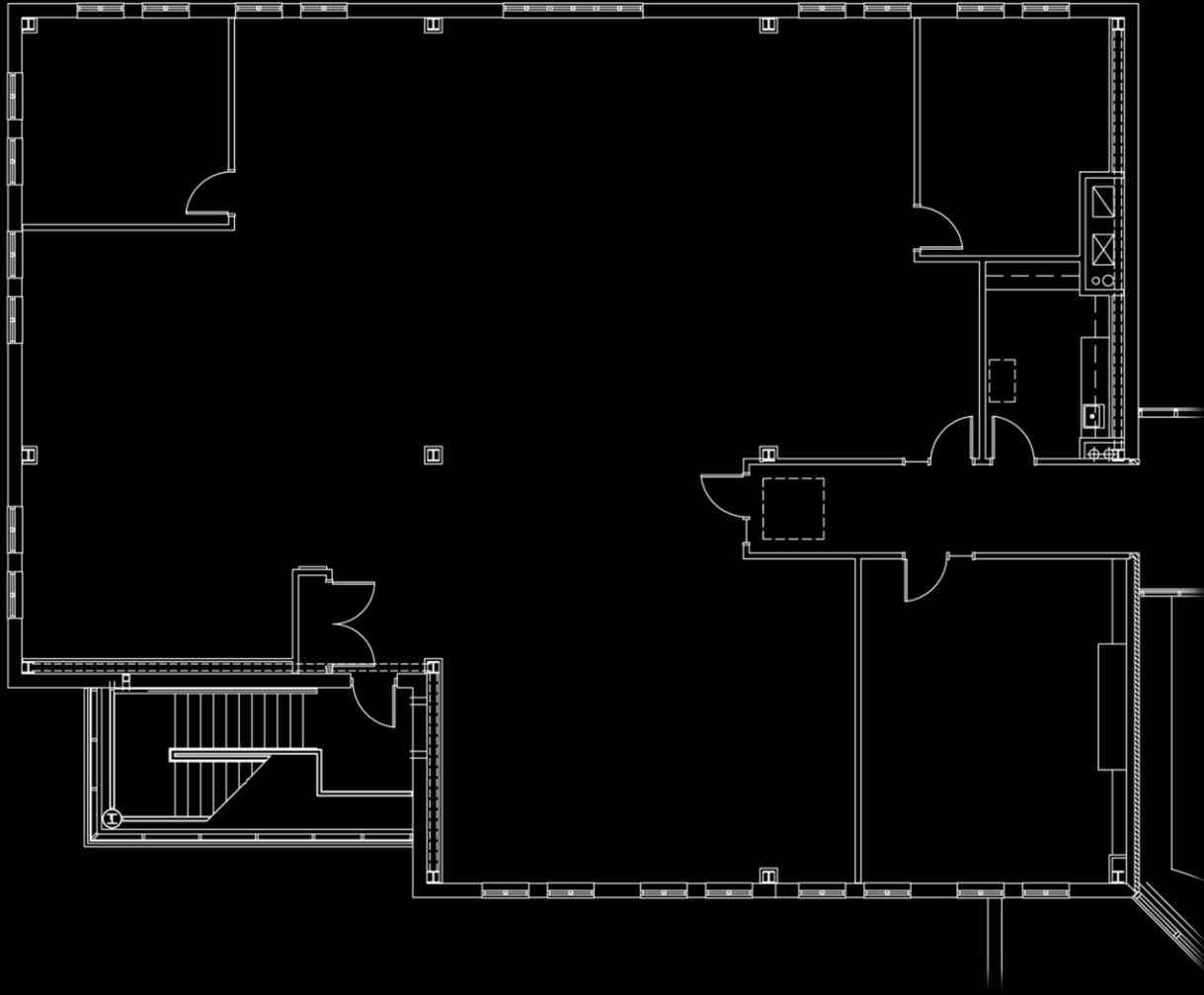
Entrance Structure

Main Lobby

Council Chambers

Workspace

Workspace: Planning & Engineering



Introduction

Entrance Structure

Main Lobby

Council Chambers

Workspace

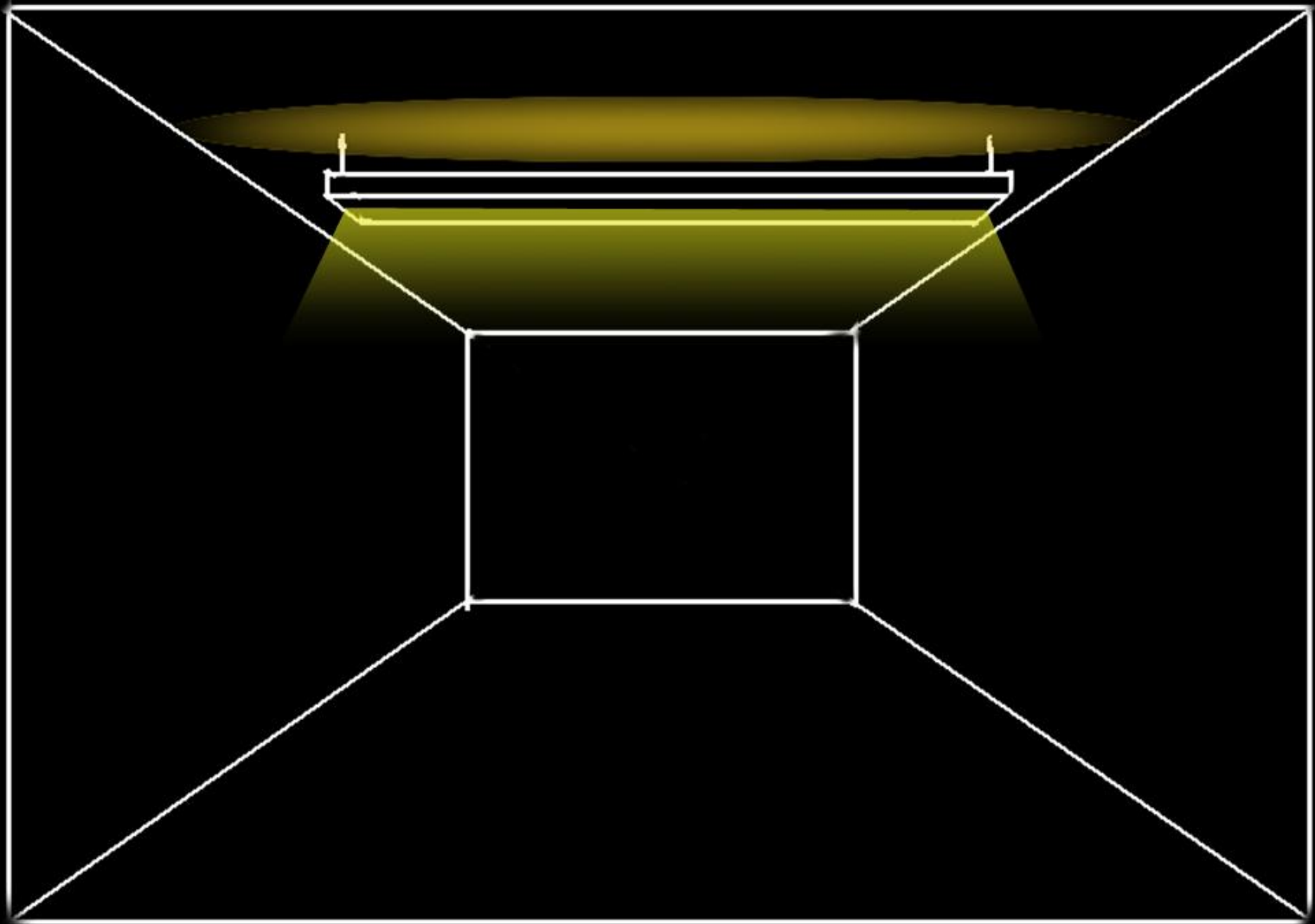
Description

- Simple space
- 8'-4" high ceiling
- Wall material is painted GWB
- Ceiling material is acoustic ceiling tile

Lighting Design Criteria

- Flexibility of use
- Luminance contrast between task plane and space
- Eliminate distracting glare and shadows
- Uniformity

Schematic Design



Introduction

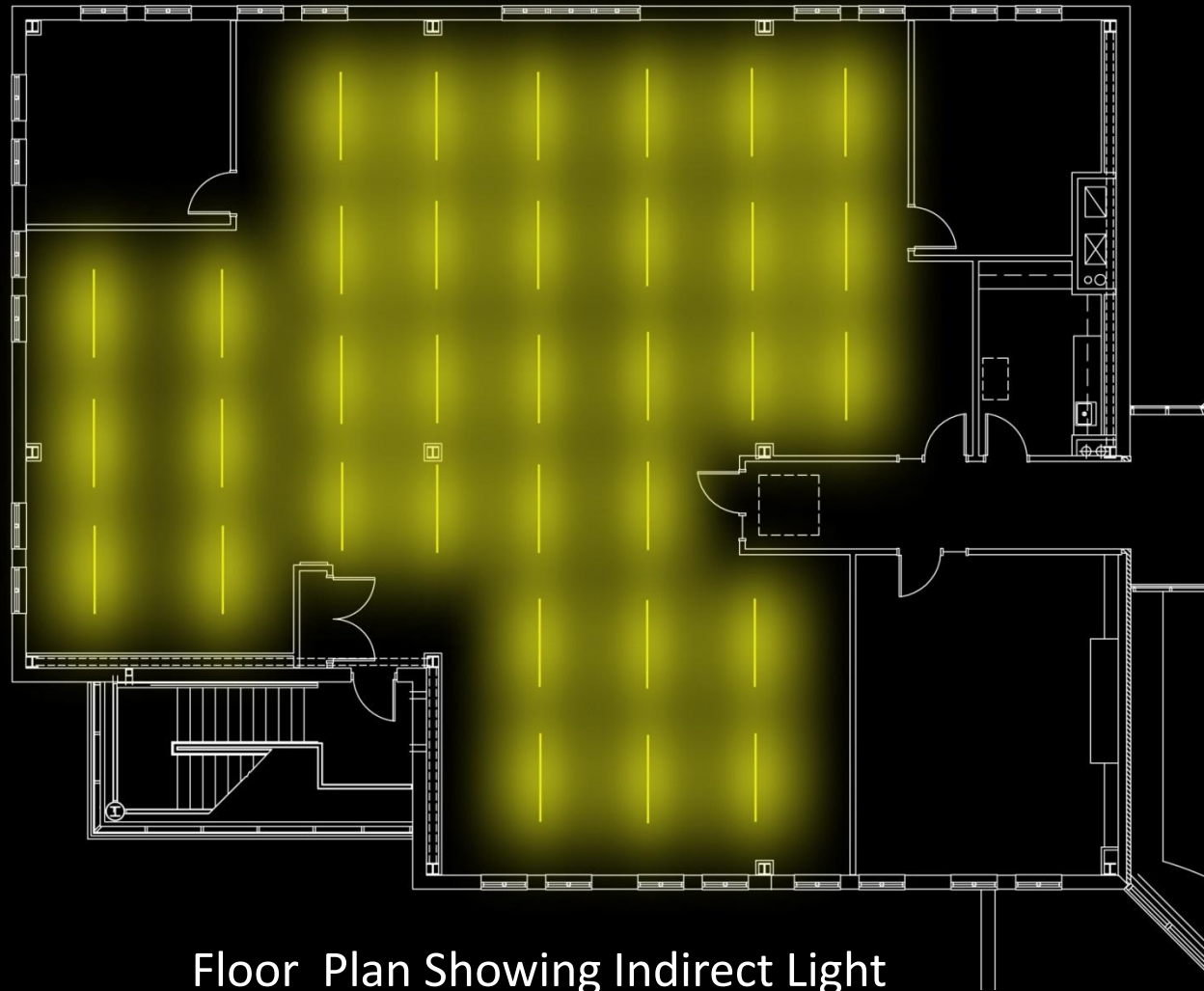
Entrance Structure

Main Lobby

Council Chambers

Workspace

Schematic Design



Floor Plan Showing Indirect Light