





	Office Building – G Eastern USA	
Presentation Outline: A. Project Background B. Analysis 1: Use of a Tieback System 1. Structural Breadth C. Analysis 2: Implementation of Photovoltaic Glass in Curtain Wall 2. Critical Industry Issue D. Analysis 3: Material Delivery During Peak Traffic Hours E. Lessons Learned F. Acknowledgements		  
	Dominic Coassolo Construction Management April 11, 2010	

 Project Background	Office Building – G Eastern USA	Project Background 
Presentation Outline: A. Project Background B. Analysis 1: Use of a Tieback System 1. Structural Breadth C. Analysis 2: Implementation of Photovoltaic Glass in Curtain Wall 2. Critical Industry Issue D. Analysis 3: Material Delivery During Peak Traffic Hours E. Lessons Learned F. Acknowledgements	 Office Building-G Information: •650,000 square feet •\$70 Million Dollars •Design-Bid-Build Special Features: •Adjacent to Metro Station •Glass Curtain Wall •Underground Parking Garage •On Site Concrete Batch Plant Garage Picture	 Metro Station Project Site
	Dominic Coassolo Construction Management April 11, 2010	



Analysis 2

Presentation Outline:

- A. Project Background
- B. Analysis 1: Use of a Tieback System
 - 1. Structural Breadth
- C. Analysis 2: Implementation of Photovoltaic Glass in Curtain Wall
 - 2. Critical Industry Issue
- D. Analysis 3: Material Delivery During Peak Traffic Hours
- E. Lessons Learned
- F. Acknowledgements



Office Building – G Eastern USA

Curtain Wall Details:

- Curtain Wall on Southern Side of Building
- Total Amount of Glass Pannels: 635

- Size of Glass Panels: 3'x4'

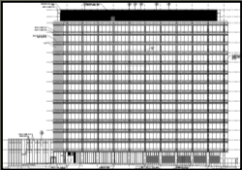
PV Glass Information:

- Physical Data
- Electrical Data (Chart)



Transparent PV Glass - Centennial Solar

PV Glass in Curtain Wall



South Elevation – Curtain Wall