

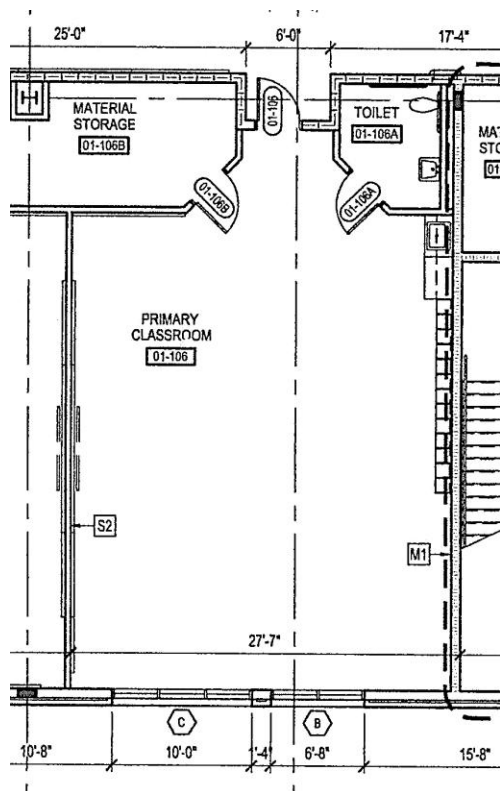
I am proposing to study four spaces for the lighting portion of my senior thesis. The spaces to be analyzed and redesigned are as follows:

- Large Work Space: Primary Classroom
- Special Purpose Space: Multipurpose Room
- Circulation Space: Lobby
- Building Façade: Covered Entry

For the Lobby of the building, I will create three different schematic design concepts.

For one of the primary classroom spaces, I will design a lighting solution that provides a public psychological impression. This impression is applicable to this space to create an environment where the function of this space, learning and studying, can be achieved.

### Large Work Space | Primary Classroom



**Figure 1: Primary Classroom**

The Primary Classroom is a typical learning space within this school. It is located on the perimeter of the building with north facing windows. This space is only being used during daylight hours. This is an educational learning space that can accommodate 25 students. The visual tasks include reading and writing of various texts and fonts. This is a learning space where teaching occurs in the front center of the room with a markerboard as a visual aid. Therefore, the important design issues are modeling the teacher's face, avoiding glare on the task planes, and uniformly distributing light on the task plane.

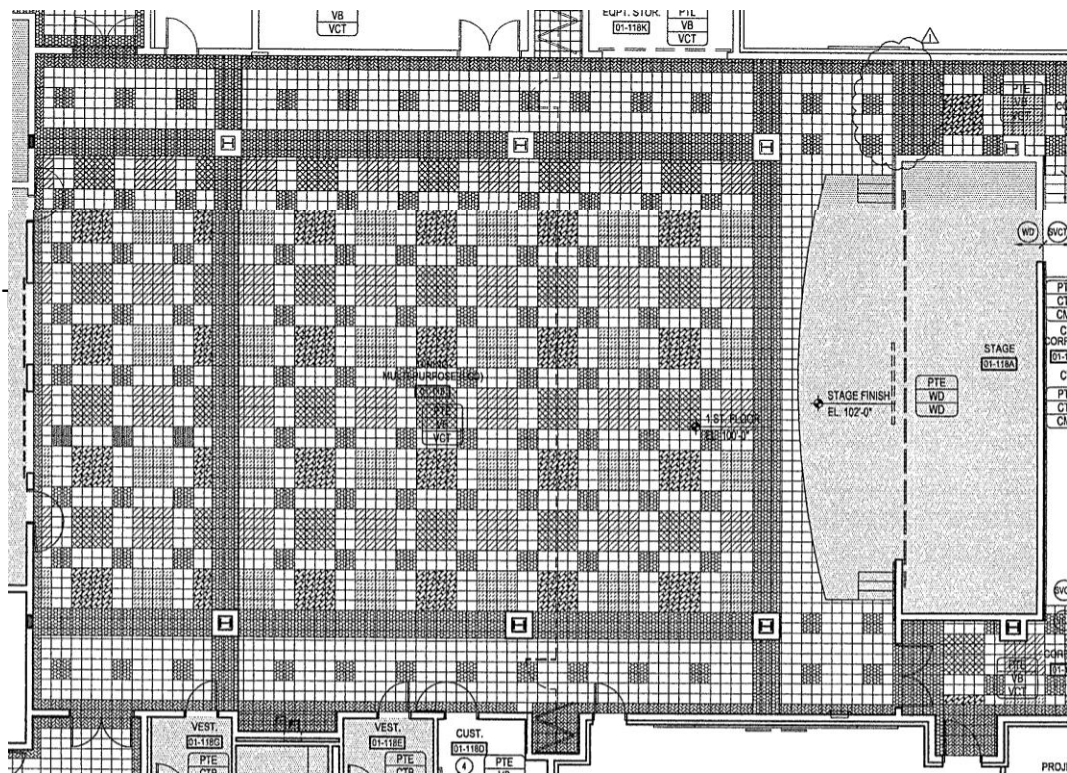
The dimensions of this space are 27'-7" x 40', with a ceiling height of 9' and a total of 969 ft<sup>2</sup>.

Table 1 describes the material finishes in this space.

**Table 1: Primary Classroom Finishes**

Ceiling	Acoustical Ceiling Tile
E (Instructional) Wall	White Latex Paint around Markerboard with a Vinyl Cove Base
S, W Walls	White Latex Paint with a Vinyl Cove Base
N Wall	Combination of Windows and White Latex Paint with a Vinyl cove Base
Floor	Carpet and Vinyl Composition Tile (Not Pattered)

Special Purpose Space | Multipurpose Room



**Figure 2: Multipurpose Room**

The Multipurpose Room is typically used to house large assembly meetings and is used as a student dining area. This room is located near the center of the building directly east of the main lobby area. This room is also used as a hurricane shelter when needed. The visual tasks for this room vary depending upon the use. In general, the visual tasks may include reading and writing. Therefore, the important design issues are providing ample amount of light on the stage for presentation purposes, avoiding glare on the task planes, and providing uniform lighting on the task planes.

The dimensions of this space are 84' x 68', with a ceiling height of 11'-1" where acoustical ceiling tile is present and 10'-5" where Gypsum Wall Board is present. The total area is 969 ft<sup>2</sup>. There is also a 997 ft<sup>2</sup> stage on the west end of the room that is elevated 2' from the floor of the Multipurpose Room. Table 2 and Table 3 describe the material finishes of this space.



Building Façade | Covered Entry

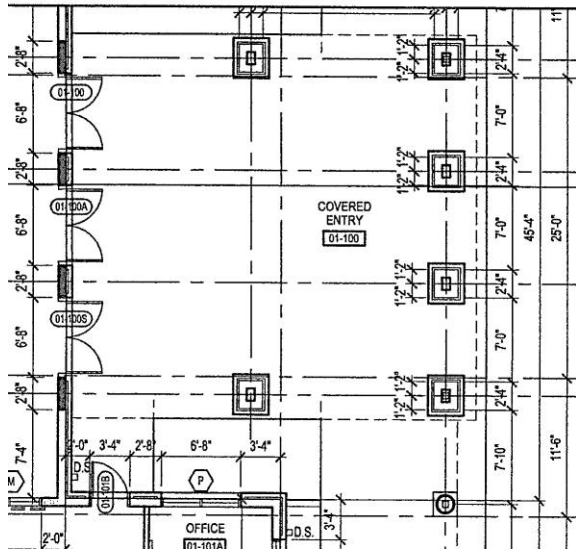


Figure 5: Covered Entry

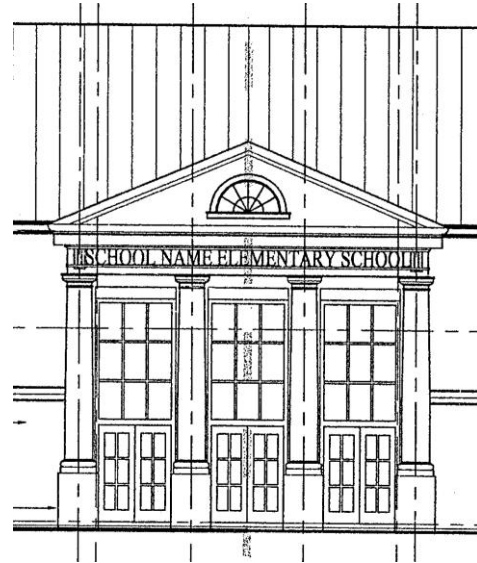


Figure 6: West Elevation

The Covered Entry is an open space on the exterior of the building that guides visitors to the main entrance. It is located on the center of the west side of the building. The six exterior columns are functional, as well as aesthetically pleasing. This space is solely used for directing people into the building; therefore, there are no visual tasks. The import design consideration is to create an open and welcoming space that directs circulation to the entrance.

The dimensions of this space are 37'-6" x 31'-6", with a ceiling height of 23' and a total of 1397 ft<sup>2</sup>.

Table 5 describes the material finishes in this space.

Table 5: Covered Entry Finishes

Ceiling	Exterior Drywall
Column	White Latex Paint with a brick veneer base
Floor	Reinforced Concrete Slab
Building Façade Wall	Combination of windows, doors, and brick veneer