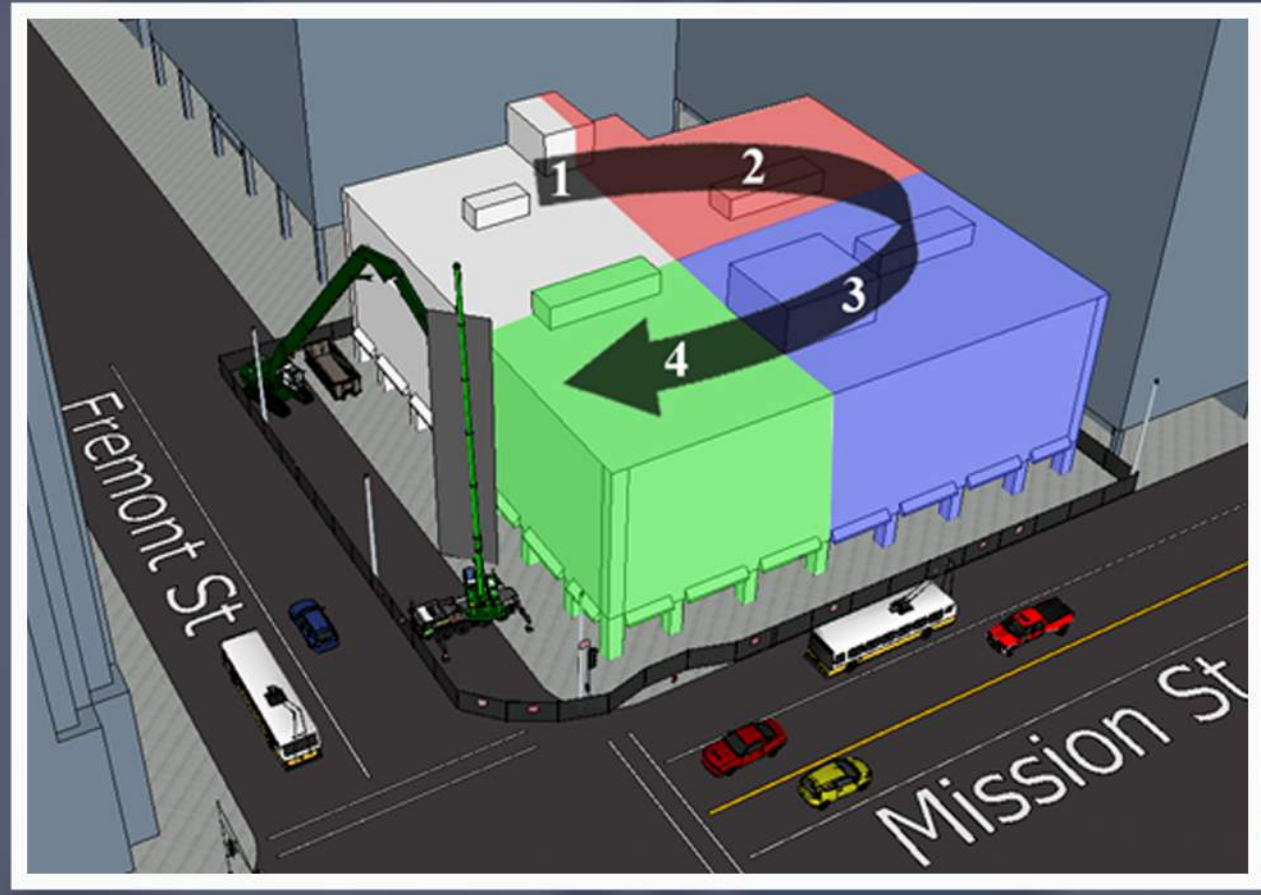


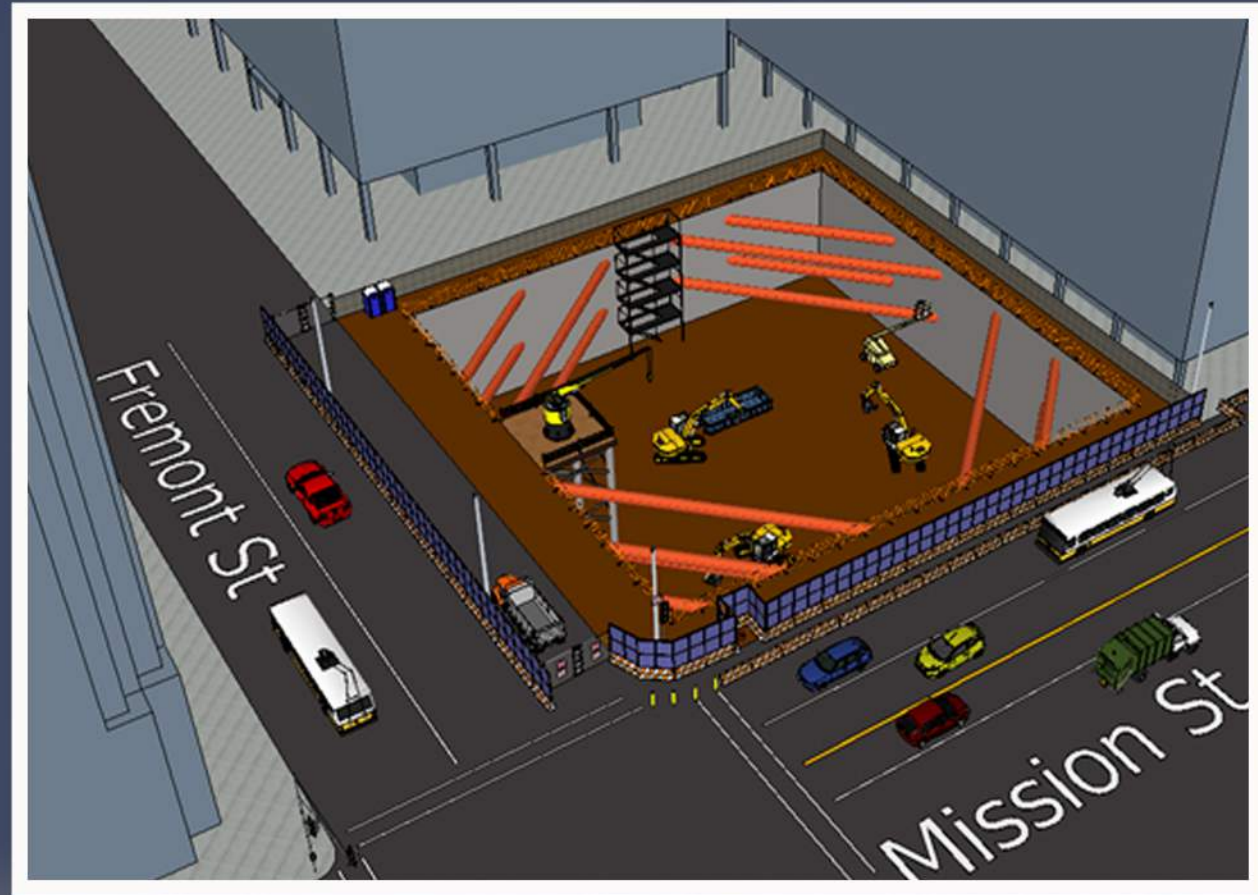
# 350 MISSION

# APOLLO

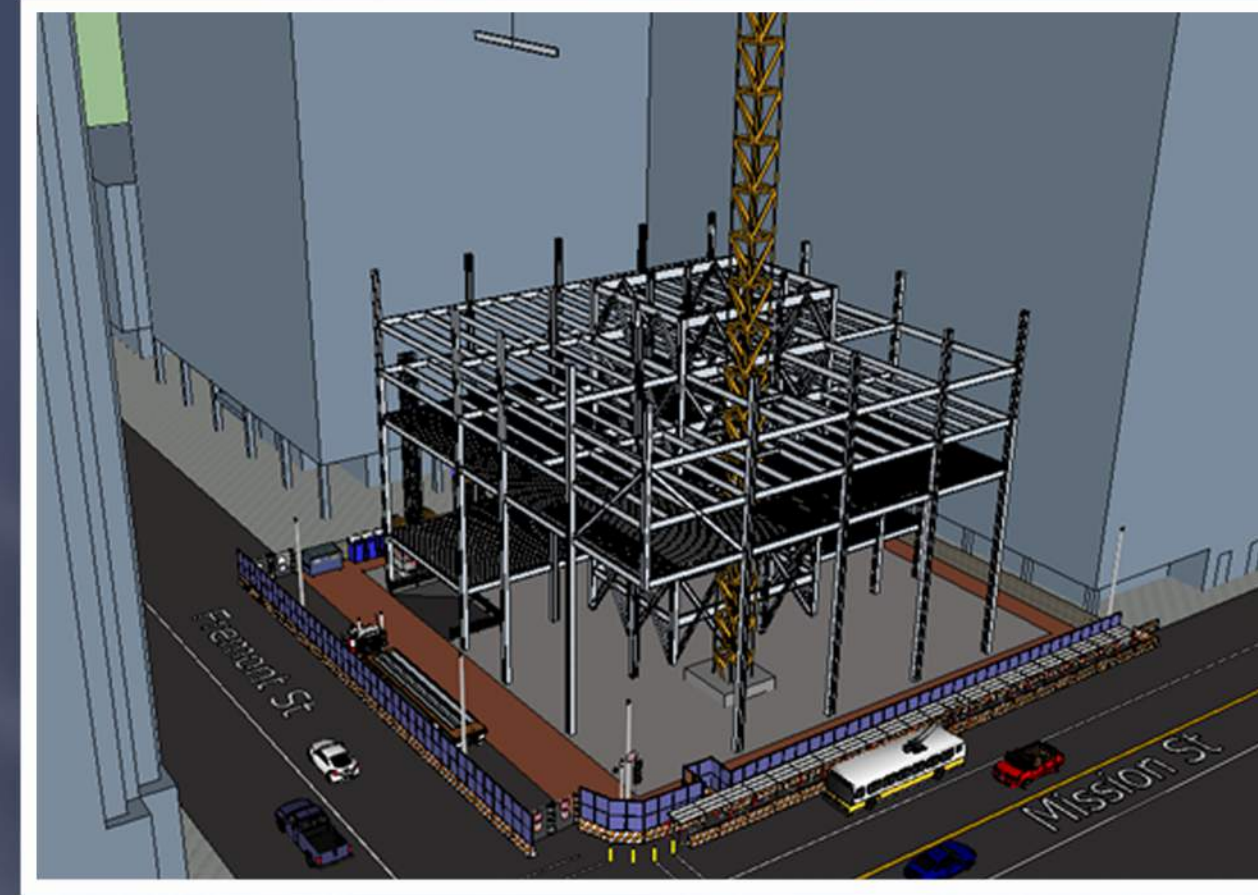
## PHASING:



Demolition



Excavation

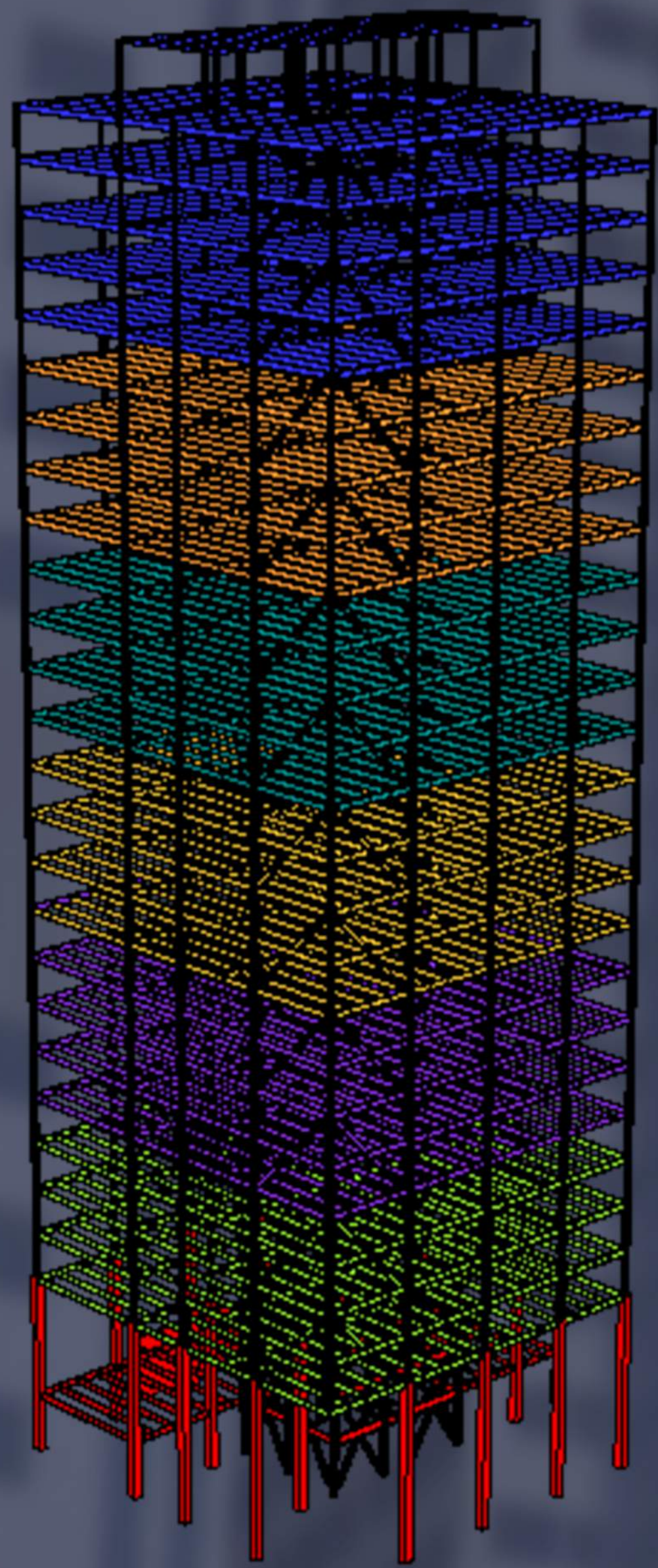


Steel Erection



Enclosure

## SEQUENCING:



Levels 25 - 30

Levels 22 - 25

Levels 18 - 21

Levels 14 - 17

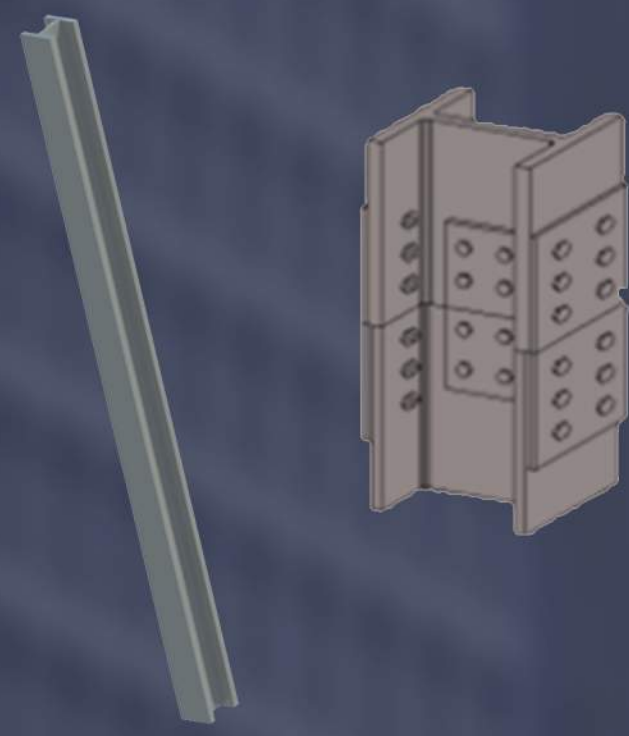
Levels 9 - 12

Levels 5 - 8

Lobby

350 Mission will be broken down into 7 different zones. Each zone contains 4 levels. These sections will be used for sequencing of the steel structure, metal decking, pouring of slabs, pod deliveries and enclosure.

## PREFABRICATION:

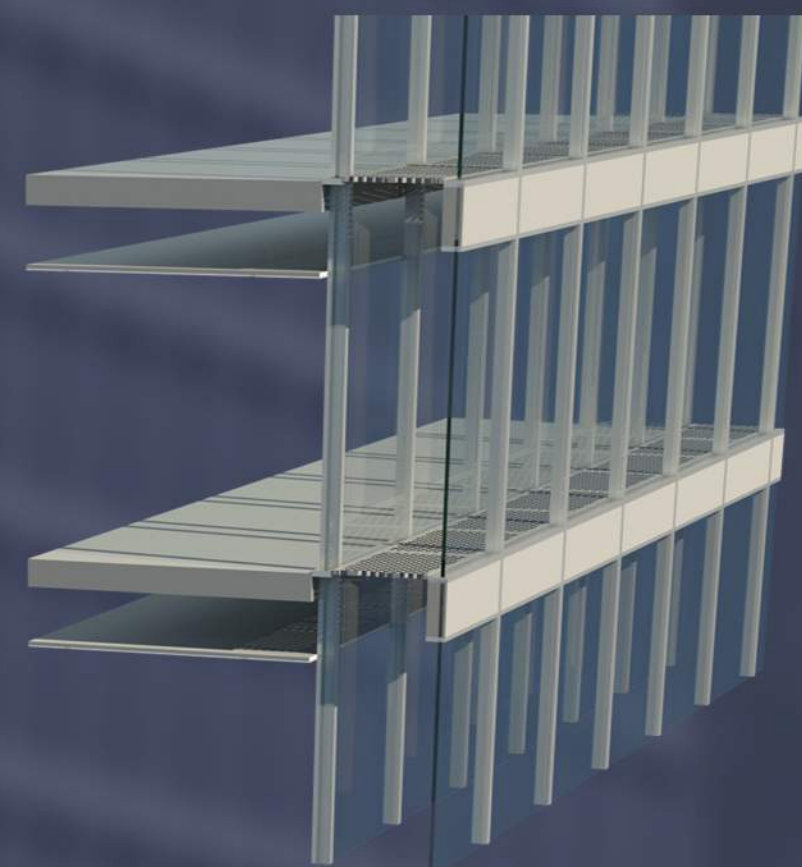
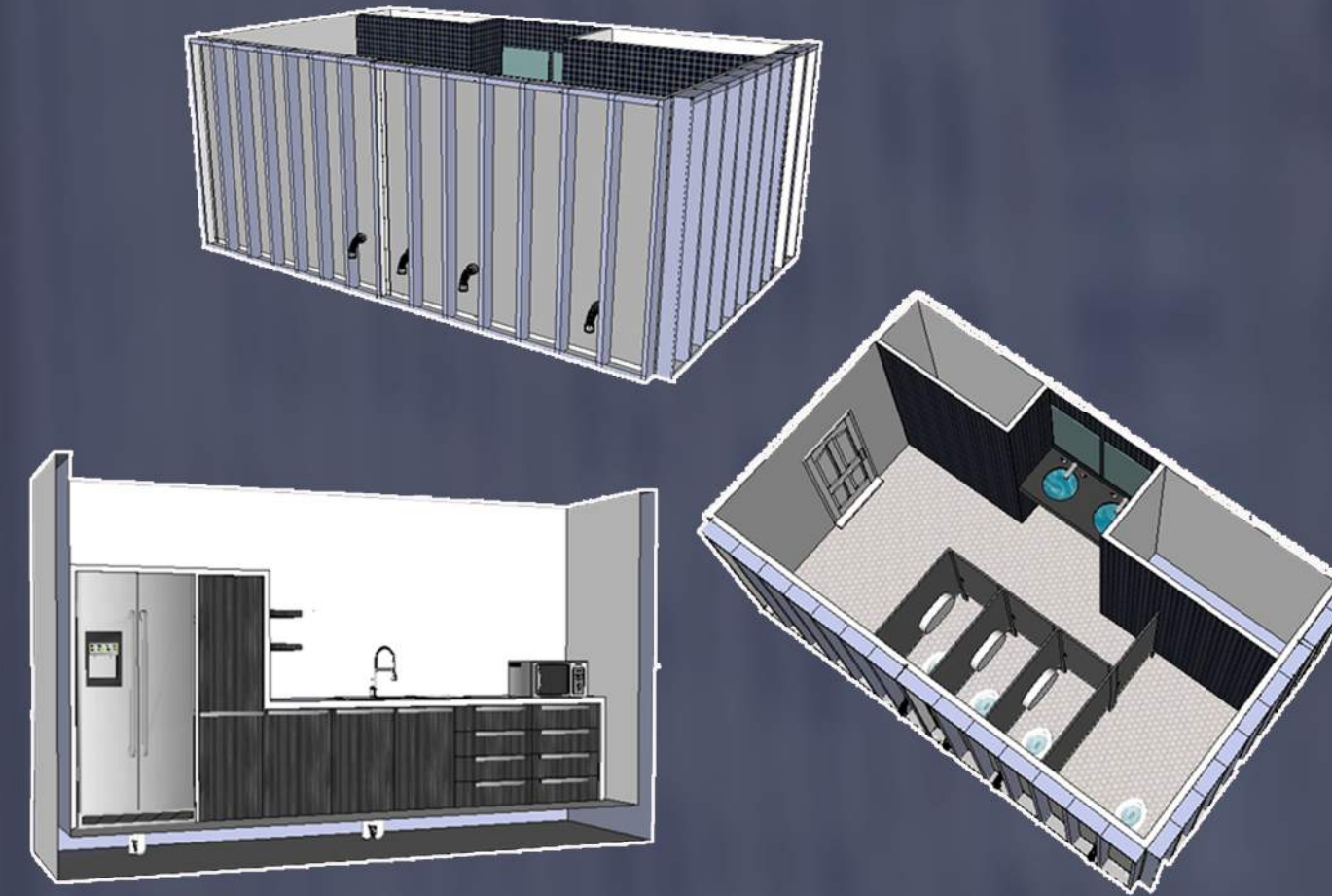


### Spliced Columns:

Columns were spliced every two floors to reduce on the amount of field welding time. This resulted in columns being 28 feet tall.

### Pod Construction:

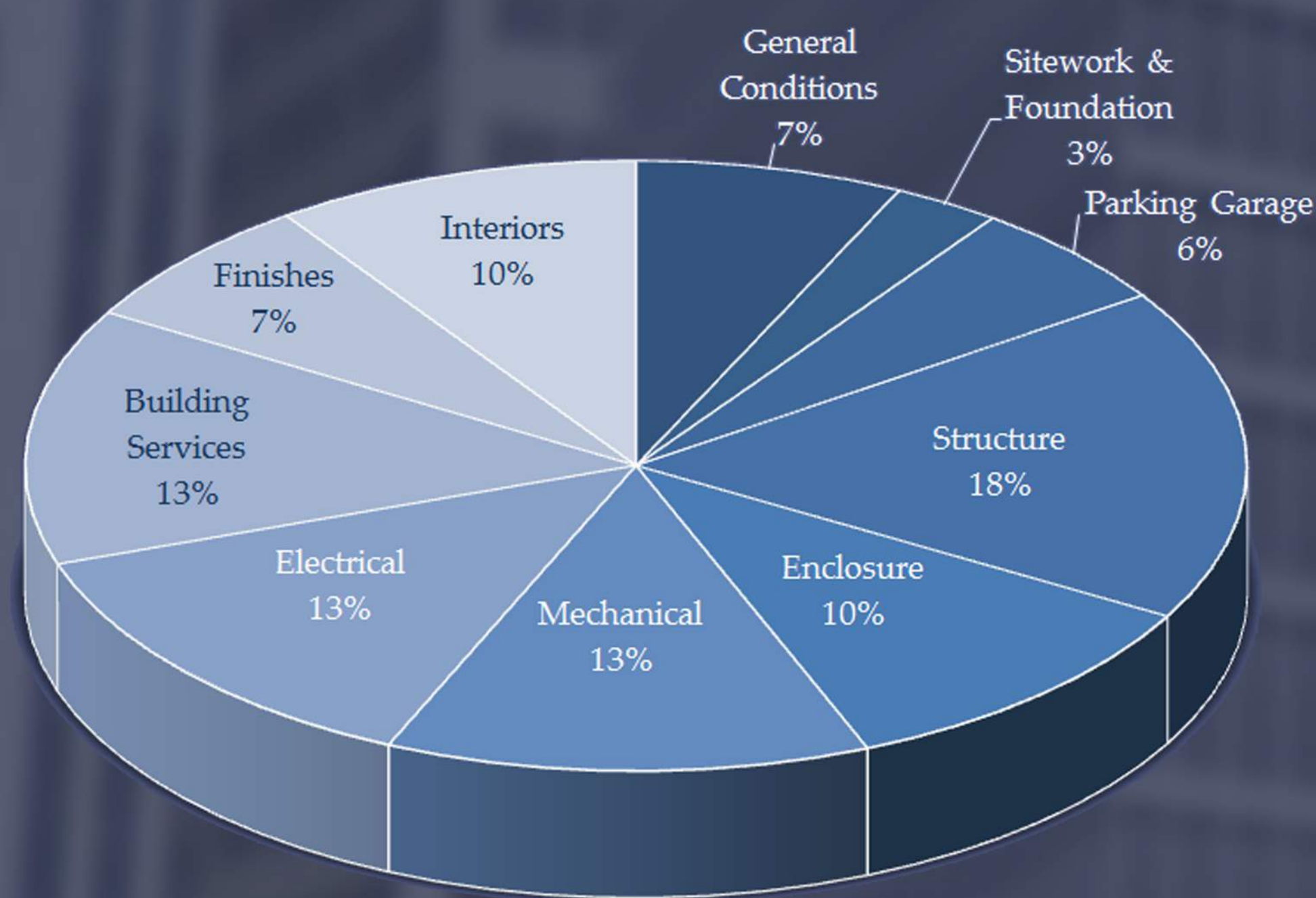
These will be used for the kitchenette and bathrooms located on the office floors. These are preassembled structures with all piping, electrical, mechanical and fixtures.



### Double Facade Panels:

This system will be prefabricated into 5 foot wide by 14 foot tall panels by 3 foot deep which will be brought to site. These panels will contain all connections, grates, and louvers. Once these panels arrive on site, they will be lifted by the monorail hoisting system into place and installed.

## COST BREAKDOWN:

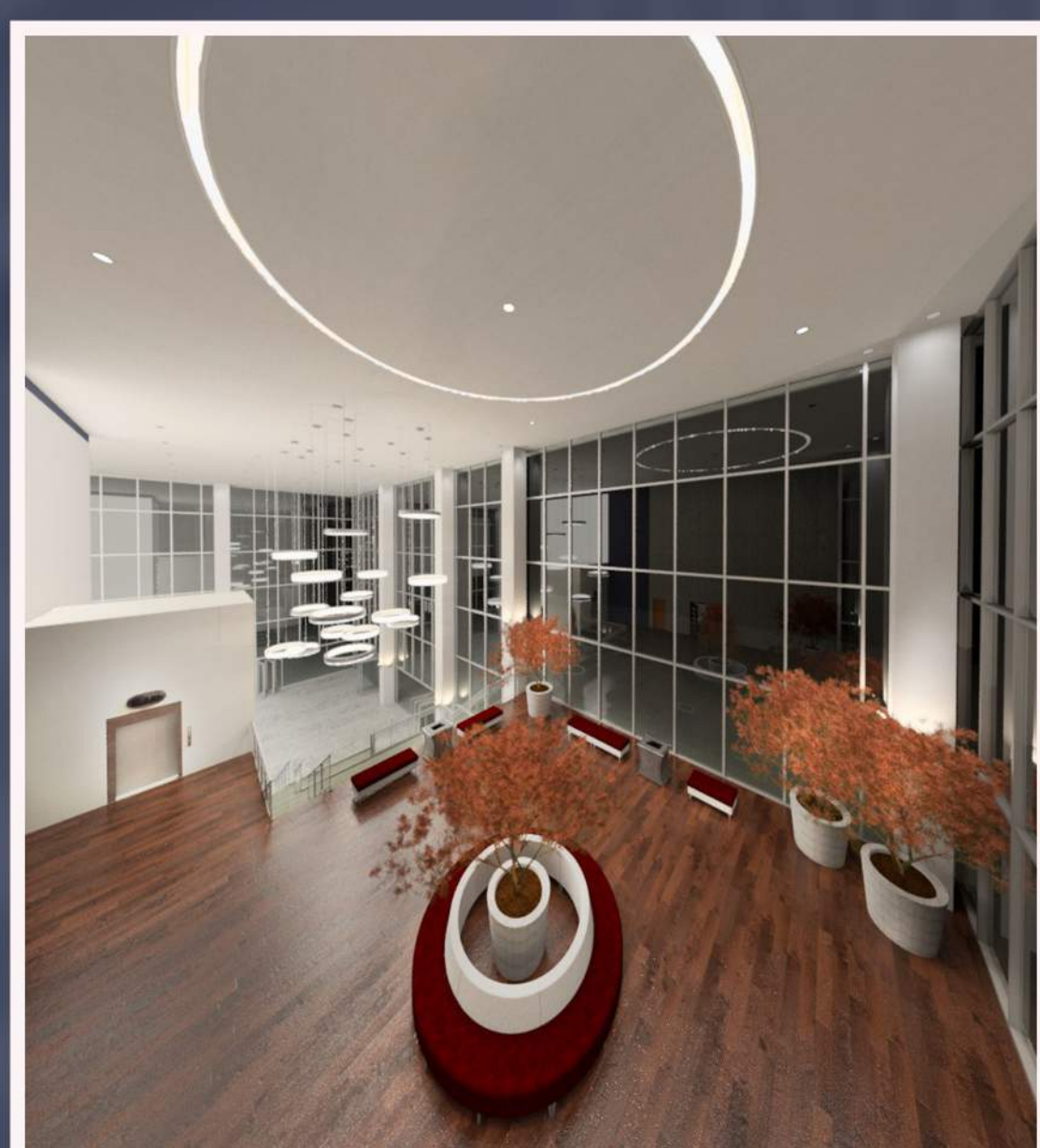


General Conditions	\$ 10,500,566
Sitework & Foundation	\$ 4,204,416
Parking Garage	\$ 8,363,950
Structure	\$ 26,139,244
Enclosure	\$ 15,686,885
Mechanical	\$ 18,969,095
Electrical	\$ 19,443,945
Building Services	\$ 20,152,892
Finishes	\$ 10,249,287
Interiors	\$ 14,384,990
<b>Total</b>	<b>\$ 148,095,270</b>

## INTERIOR VIEWS:



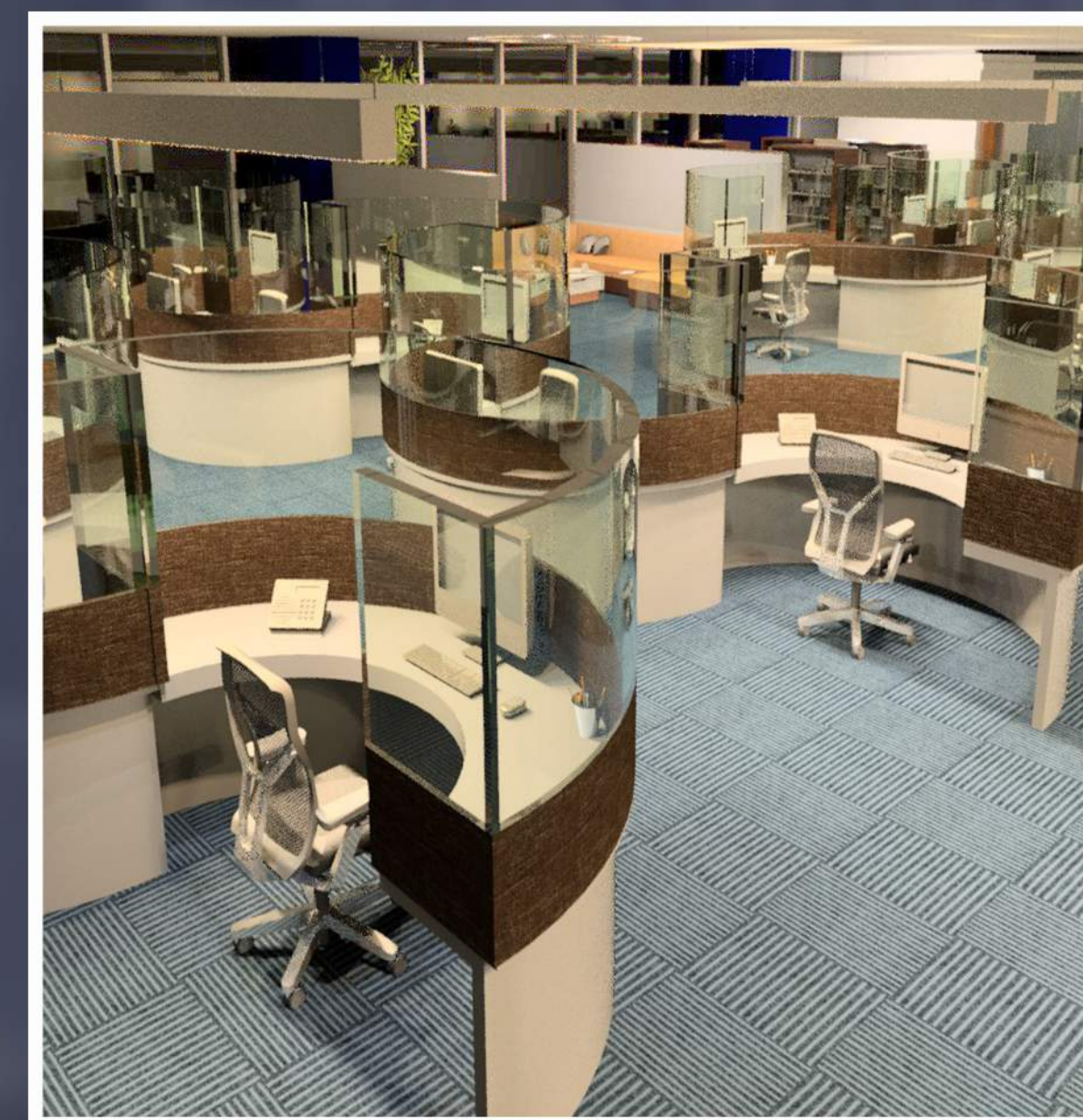
Lobby



Upper Lobby



Reception Desk



Open Office

## TEAM MEMBERS:



Rebecca Bires  
Patrick Vogel



Scott Brown  
Andrew Levy



Jordan Huey  
Helen Leenhouts



Scott Eckert  
Jeffrey Loeb

## BUILDING OVERVIEW:

30 Story Mixed - Use High Rise

4 Story Lobby Entrance

Restaurant

Retail

25 Office Floors

4 Story Underground Parking Garage

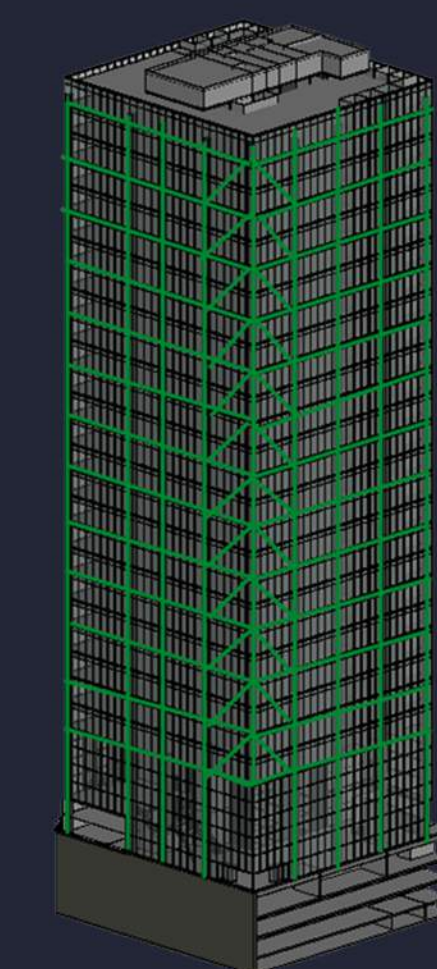
San Francisco, CA

Building Cost: **\$148,095,270**

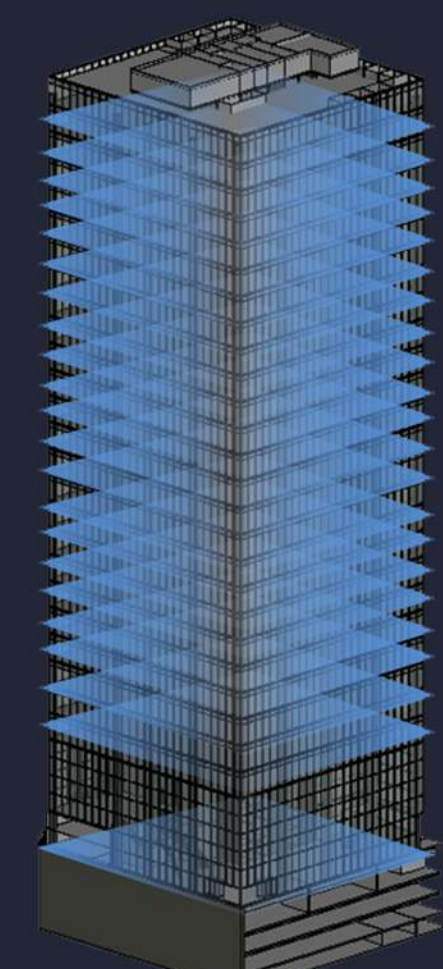
Schedule: **29 Months**

LEED Certification: **Platinum**

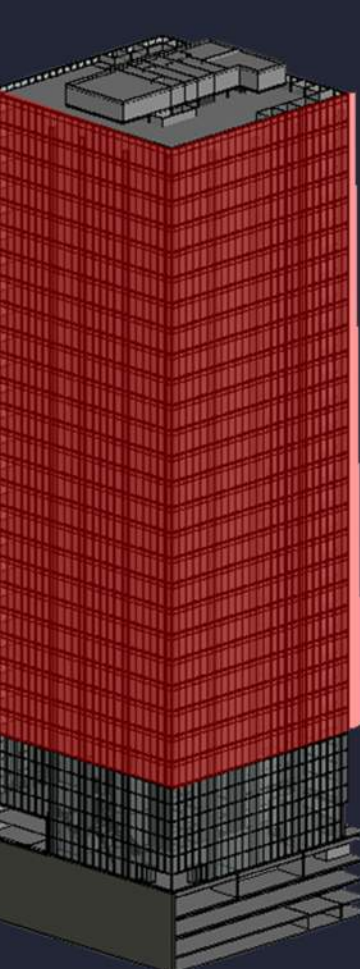
## BUILDING SYSTEMS:



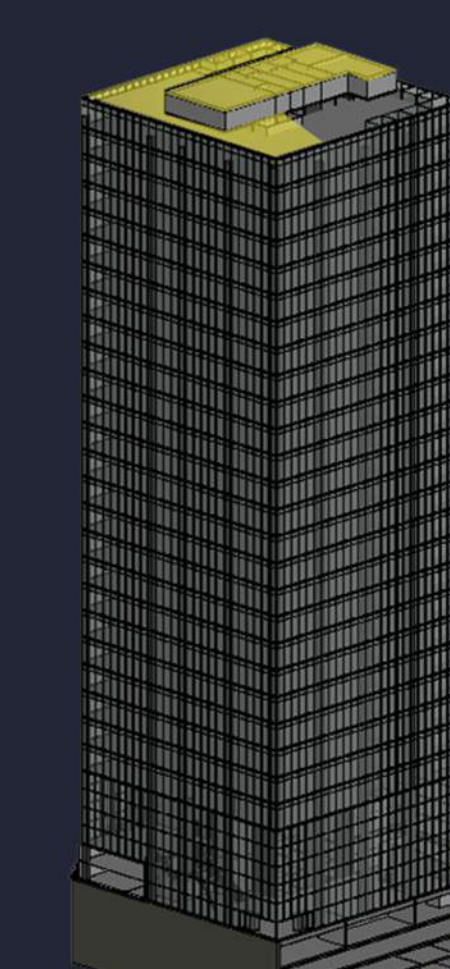
Structural Steel System



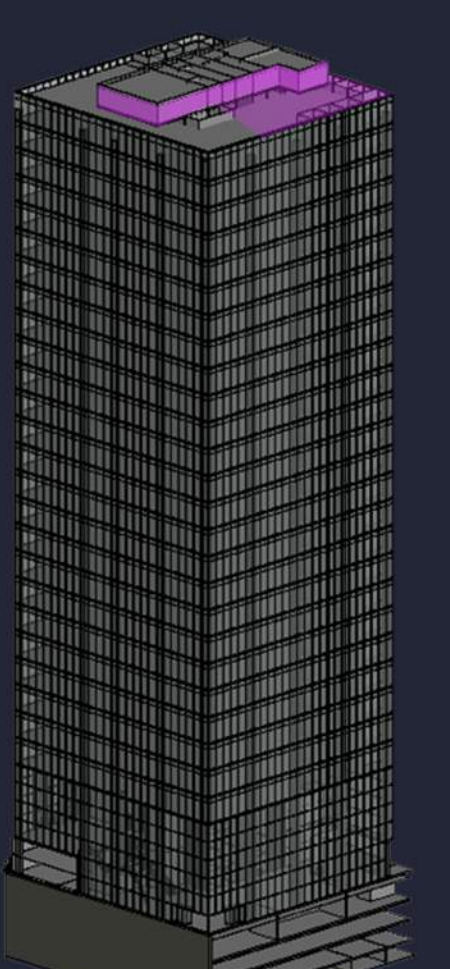
Raised Access Floor System



Double Facade



Photovoltaic Grid



Combined Heat and Power