



## Appendix E: References

### Personal Contacts

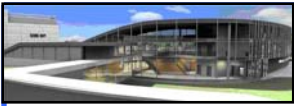
- *Geisinger Facilities* : Mitch Leiby
- *Geisinger Health Services* : Bill Gladish
- *Harmon Inc.* : Ron Mantegna
- *ISEC Inc.* : Jim Golemboski

### Texts

- American Institute of Steel Construction. Manual of Steel Construction: LRFD Method. 3<sup>rd</sup> Edition. USA, 2001
- Gibb Alistair G. F. and Neale Richard H. Management of Prefabrication for Complex Cladding: Case Study by, *Journal of Architectural Engineering*, Vol. 3, No. 2, June 1997, pp. 60-69
- Green Guide for Health Care Steering Committee. Green Guide for Health Care Construction: Pilot Version 2.0, August 2005
- Pasquire, C., Gibb A., and Blismas, N. (2005). What Should You Really Measure If You Want to Compare Prefabrication with Traditional Construction: Proceedings of 2005 IGLC Conference, Sydney, Australia.
- Steven Winter Associates, Inc. GSA: LEED Cost Study Final Report. U.S. General Services Administration, October 2004.
- U.S. Green Building Council. LEED-NC Rating System. Version 2.2. Washington D.C: U.S. Green Building Council, 2005.

### Internet Sources

- Architectural Testing Incorporated <<http://www.archtest.com>>
- Glass Magazine <<http://www.glassmagazine.net>>
- Green Guide for Health Care Construction, 2005 <<http://www.gghc.org>>
- Harmon Incorporated <<http://www.harmoninc.com>>
- Loewen Architectural Services <<http://www.loewen.com>>
- National Glass Association, Unitized or Stick? <[http://www.glass.org/affprof/r\\_unitizedorstick.htm](http://www.glass.org/affprof/r_unitizedorstick.htm)>



- U.S. Green Building Council <<http://www.usgbc.org>>
- U.S. General Services Administration <<http://www.gsa.org>>

### Computer Resources

- Autodesk: AutoCAD 2006
- Autodesk: VIZ 2006
- CostWorks Version 8.0
- Navisworks Jetstream