



POST CARD

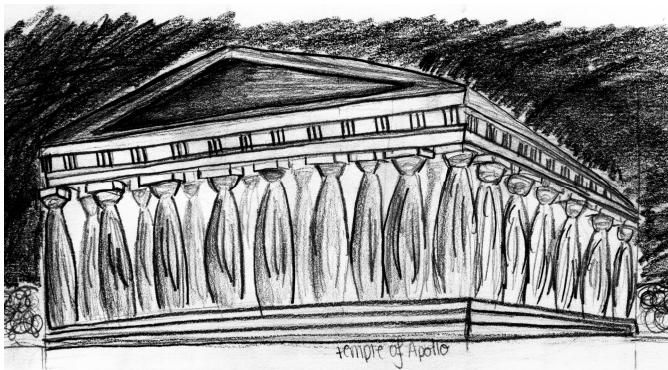
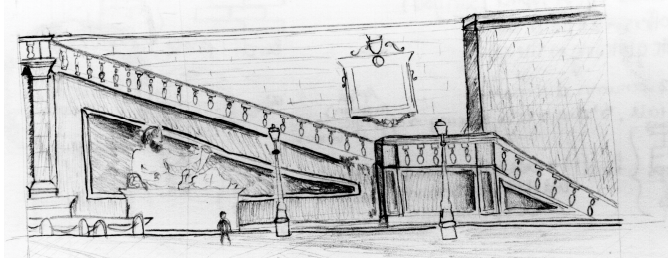


Photoshops

Second Year Studio



Cartolina postale

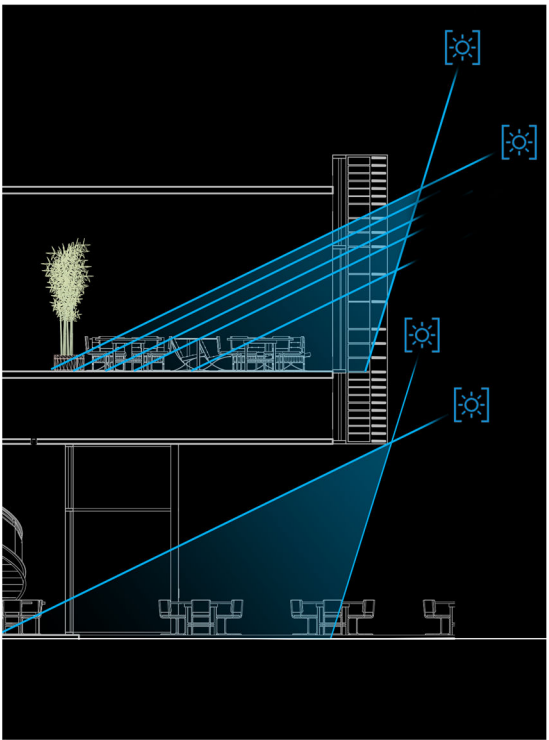


Seda di Roma

Pantheon Institute

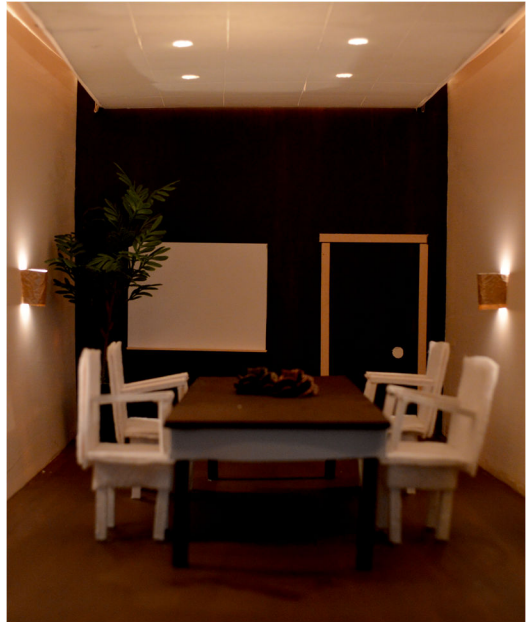
The Spirit of a Place





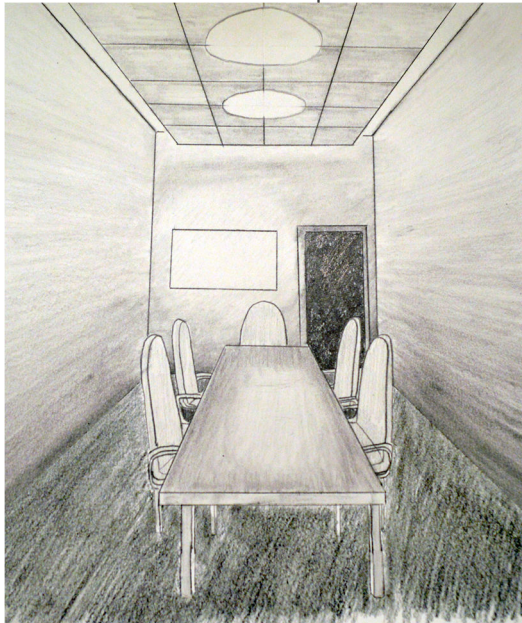
Collaborative Studio

Flynn Lighting Modes...



...Designing Emotion

Spacious

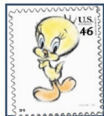
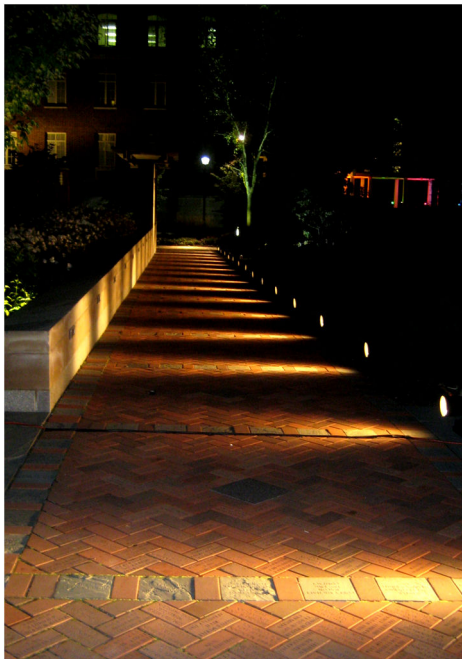


POST CARD

Enclosure



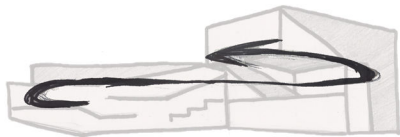
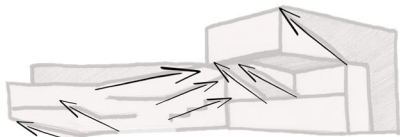
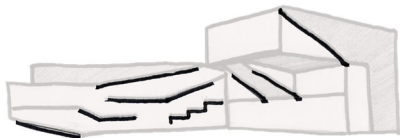
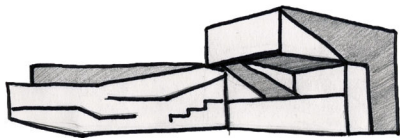
Nittany Lights 2010...



...a walk through time

POST CARD

Conceptual Design





AE 466 Conceptual Design

Howard Brandston Design Competition

Partner: Patrice Mulhern

Day to Night



Photoshop Renderings



Photoshop Renderings

Fanateer Marina, Saudi Arabia

HLB Lighting Design





POST CARD

To Love
Beauty is to
See Light.

to evoke emotion , to inspire

to express my passion

to love what I do

to fuse the line between beauty and light