



Eagles™

Coppin State University Physical Education Complex

Project team

architect: cochran, stephenson and donkervoet, inc.
associate engineer: sasaki associates, inc.
structural engineer: hope furrer associates, inc.
mechanical engineer: james posey associates, inc.
electrical engineer: diversified engineering, inc.
civil engineer: site resources, inc.
construction management firm: gilbane

Statistics

owner: maryland stadium authority
location: north baltimore
height: varies 30'-60'
size: 155,200sqft
construction dates: 2003-2009
project delivery method: design-bid-build
estimated cost: \$57,400,000

Architecture

- *Frequent heights changes
- *Red brick juxtaposed with glass and aluminum dividers
- *Exposed steel trusses over the 2600 seat arena
- *Surrounds soccer and training field
- *Spaces include
 - arena
 - 8-lane swimming pool
 - racquetball courts
 - gym
 - classrooms
 - management facilities



Structural

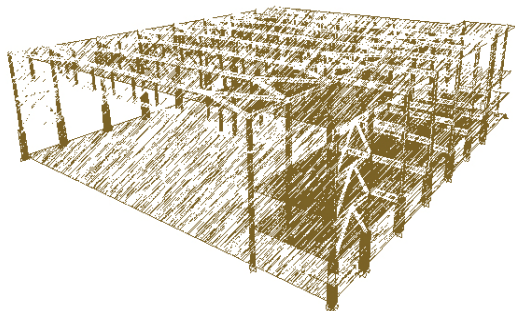
- *Sub-divided by 3 expansion joints into 4 smaller buildings
- *Composite steel floor system
- *Typical beam spacing at 10'
- *Typical girder spacing at 31'
- *W-shapes widespread as beams and columns
- *Moment frames, braced frames make up lateral system
- *Foundation composed of spread footings

Mechanical

- *VAV air-handling units spread throughout
- *3 250 hp boilers (with possibility for 2 future boilers)
- *1000 ton cooling tower (with possibility for 2 future towers)

Lighting/Electrical

- *Primarily fluorescent lighting
- *Pendant mounted compact fluorescent lighting fixtures used above swimming pool and arena areas
- *Main switchboard uses 3-phase/4-wire 480/277 volt system
- *Secondary switchboard uses 3-phase/4-wire 208/120 volt system



Todd Drager

Structural Option