

Photos Taken for Week Ended 10-17-08

Contents

North and East Façade from NE Corner 2

East Façade 3

South Façade (East Half) from Access Road..... 4

South Façade (West Half) from Access Road..... 5

West Façade from Parking Lot..... 6

North and West Façade from NW Corner..... 7

1st Floor Lobby – Stair C 8

High Voltage Transformers Set 9

Formwork Stair B – Poured to 8th Floor 10

20th Floor-Insulating Ductwork 11

20th Floor – Storefront (NW Corner)..... 12

North and East Façade from NE Corner



East Façade



South Façade (East Half) from Access Road



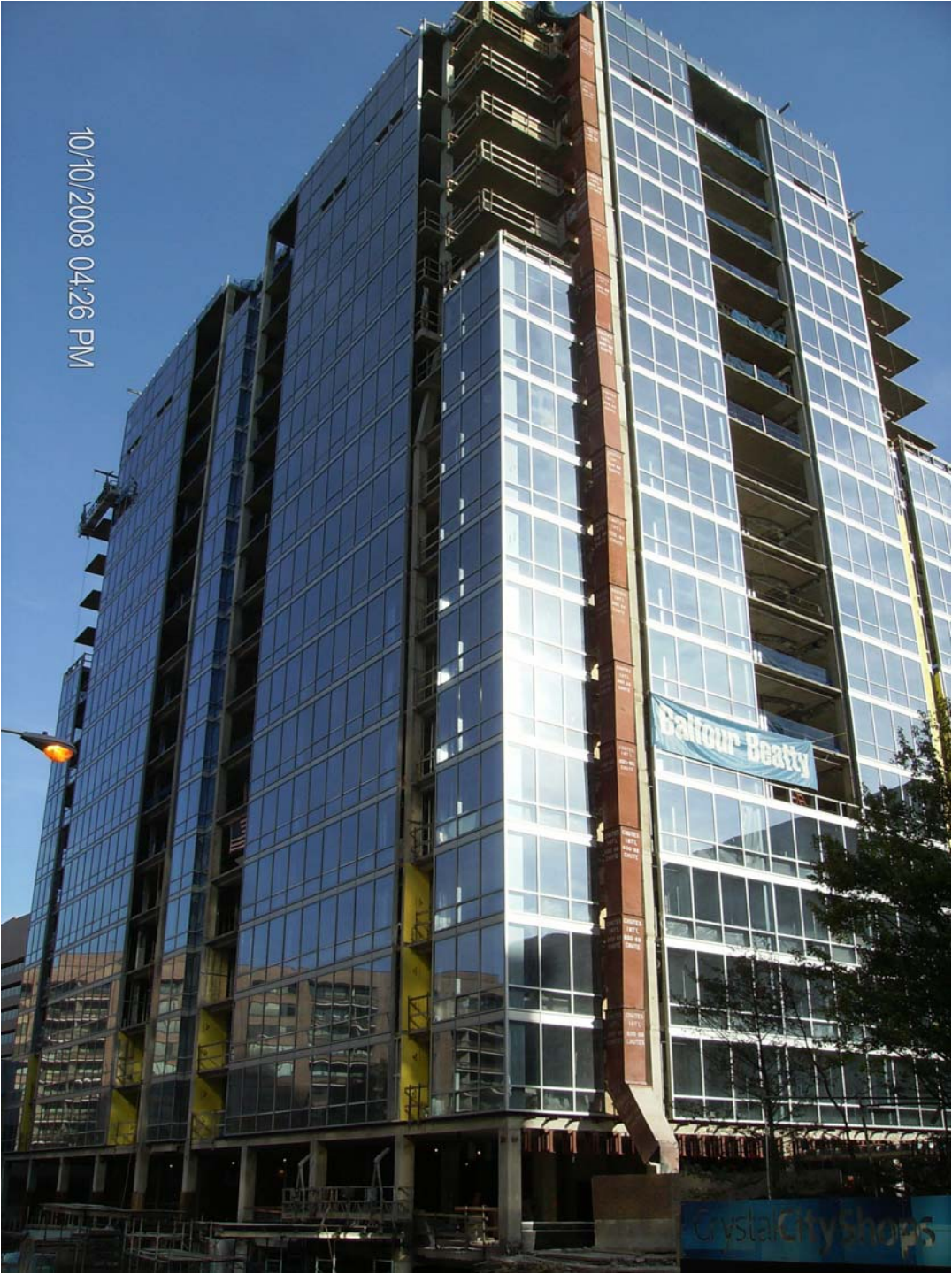
South Façade (West Half) from Access Road



West Façade from Parking Lot



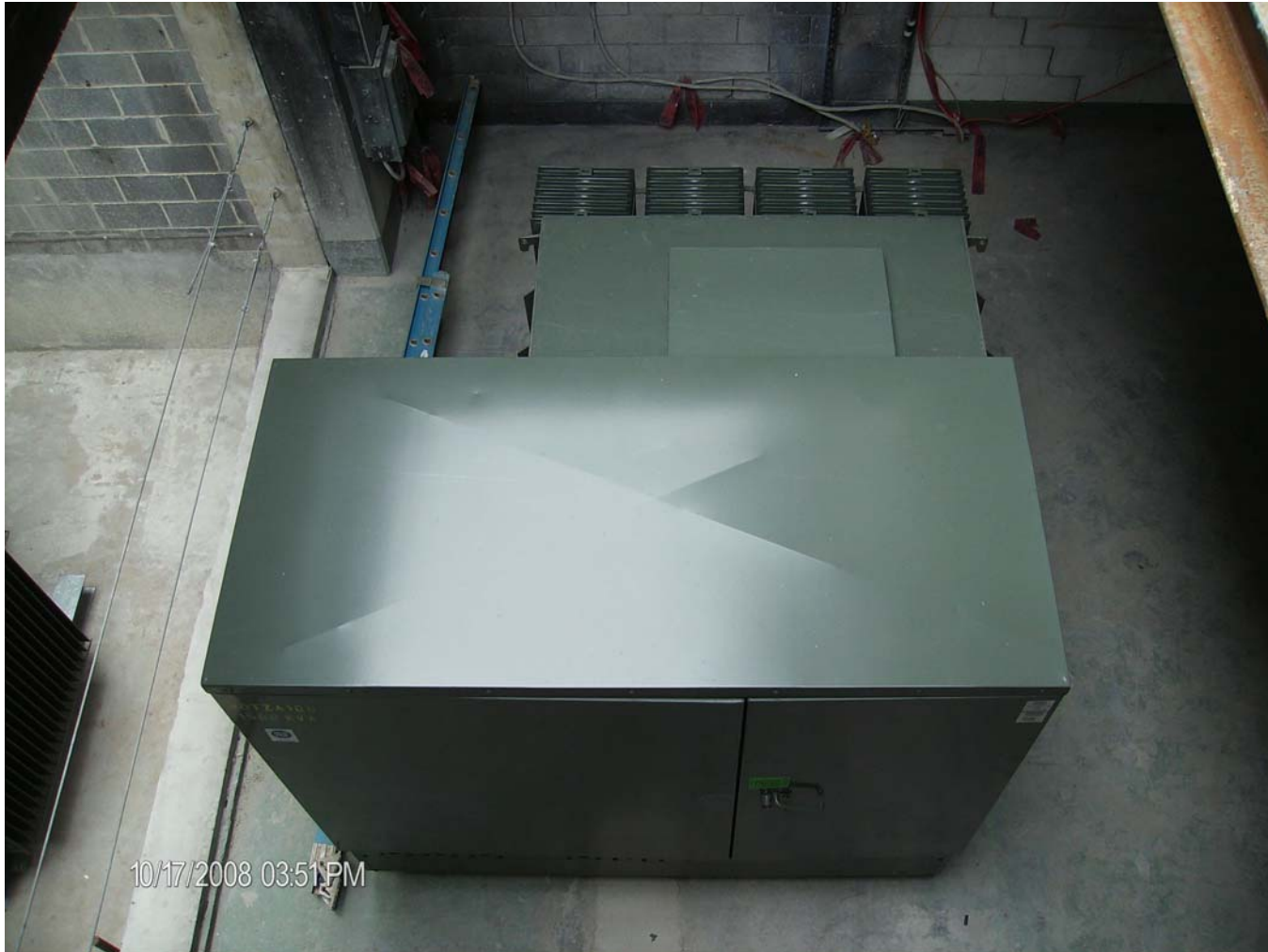
North and West Façade from NW Corner



1st Floor Lobby – Stair C



High Voltage Transformers Set



Formwork Stair B – Poured to 8th Floor



20th Floor-Insulating Ductwork



20th Floor – Storefront (NW Corner)

