

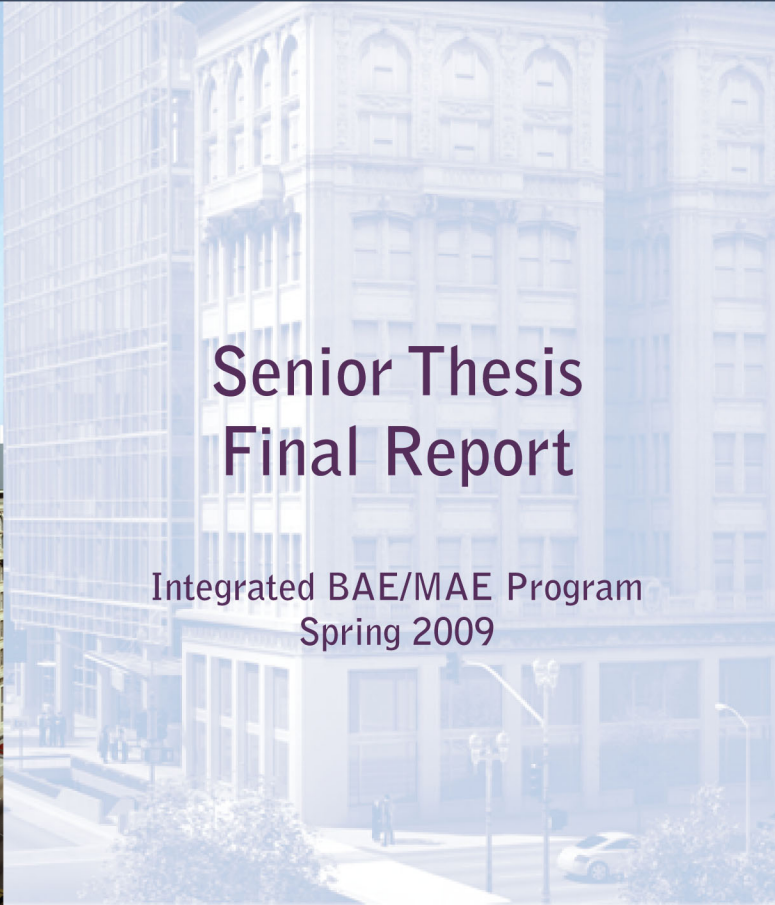


Sonja G. Hinish  
Structural Option

Advisor: Dr. Hanagan

April 7, 2009

1100 Broadway  
Oakland, CA



## Senior Thesis Final Report

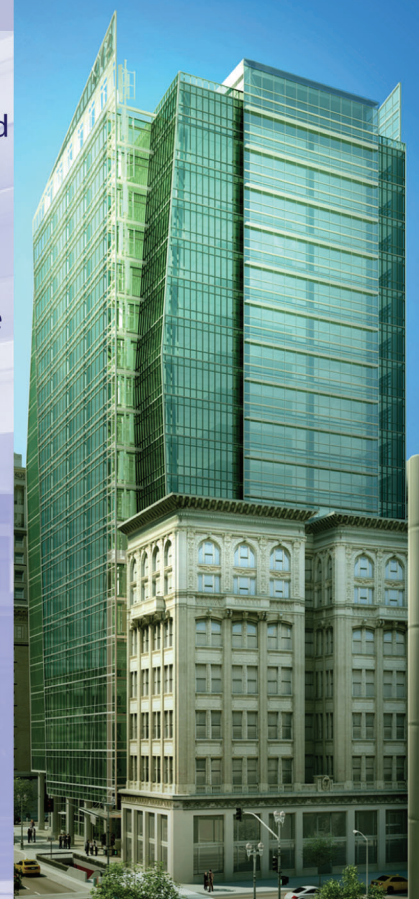
Integrated BAE/MAE Program  
Spring 2009



# Sonja G. Hinish

## Structural Option

1100 Broadway  
Oakland, CA



### Building Statistics

Building Occupancy: Office/Retail  
Size: 320,000 sf  
Stories Above Grade: 20  
Dates of Construction: Start-June 2010,  
Finish-December 2011  
Cost Information: Confidential  
Project Delivery Method: Design CM-at-risk-bid-build, with CM providing preconstruction services

### Primary Project Team

Owner: SKS Investments  
Architect: Kaplan McLaughlin Diaz Architect  
Structural Engineer: Simpson Gumpertz & Heger, Inc.  
MEP Engineer: Glumac, Inc.  
Civil Engineer: Sandis  
Lighting Designer: Horten Lees Brogden  
General Contractor: Swinerton Builders  
Historical Architect: Wiss, Janney, Elstner Associates

### Architectural

- 310,000 S.F. of office space and 10,000 S.F. of ground floor retail space
- Combines a new high-rise tower with the renovated Key System Building façade, a 37,000 square foot historic office building damaged in the 1989 Loma Prieta earthquake
- Building site is located directly above the 12th Street/City Center BART public transportation station
- Building envelope is comprised of high performance glass from floor to roof with massive curtain walls on two of the four elevations
- Flat roof system consisting of self-adhered membrane waterproofing and rigid insulation

### Structural

#### Gravity Framing System:

- Typical office floors are light weight concrete fill on composite steel deck supported by structural steel framing

#### Lateral System:

- Wind and earthquake forces are resisted by a dual system composed of Steel Special Concentric Braced Frames located around and across the building core and Special Moment Resisting Frames at the building perimeter. Braces are wide flange members with welded connections

#### Foundations:

- Main tower is supported by 110 ton, 14"-square, driven prestressed, precast concrete piles beneath a reinforced concrete mat foundation

### Sustainability

- Building aims to achieve a LEED Gold rating
- Transit Oriented Development (TOD)
- High performance glass façade
- Photovoltaic solar panels on roof
- Green roof on the Key System Building

### MEP

- 60,000 cfm Air handling units serving an Underfloor Air Distribution System
- 480/277V Primary feed, 208/120V Secondary feed
- Rainwater collection, filtration and reuse system
- Dimmable ballasts

## **ACKNOWLEDGEMENTS**

---

I would like to extend my deepest thanks and appreciation to the following individuals and companies.

Simpson Gumpertz & Heger:

Anindya Dutta  
Ronald Hamburger  
Amy Graver  
Charlie Russo

Holbert Apple Associates:

Richard Apple

SKS Investments:

Steve Shanks

The Pennsylvania State University:

Dr. Linda Hanagan  
Robert Holland  
Kevin Parfitt

I want to give a special thanks to all of my friends and my family for their help and support throughout the year.

## TABLE OF CONTENTS

---

<b>Executive Summary</b> .....	1
<b>Background</b> .....	2
Building Overview	
Architectural Floor Plans	
Structural System	
Existing Framing Plans and Frame Elevations	
<b>Structural System Redesign for 1100 Broadway</b> .....	13
Gravity System Design.....	16
One-way slab design	
Post-tensioned beam design	
Column Design	
Gravity System Design Summary and Conclusions	
Lateral System Design.....	25
Shear wall design	
Lateral Analysis.....	31
Wind	
Seismic	
Impact on Foundations.....	35
<b>Breadth Studies</b>	
Introduction.....	37
Architectural Breadth.....	38
Planting Plans	
Building Enclosures Breadth.....	47
<b>Summary and Conclusions</b> .....	50
<b>Appendix</b>	
Slab Design.....	A1
Shear Wall Design.....	A3
Lateral Analysis.....	A8

## **EXECUTIVE SUMMARY**

---

The report focuses on the redesign of 1100 Broadway's structural system. The system was changed from a composite metal deck system supported by composite steel beams to a one-way mild steel reinforced concrete slab with post-tensioned beams. The original lateral system of steel moment and braced frames was changed to ordinary reinforced concrete shear walls.

The overall goals of the senior thesis project were met. Prestressed design was previously a very complicated concept to grasp and throughout the course of the project it has become much more clear.

With the redesign the total floor system depth was reduced from the existing system depth of 30.25" to 22" in most areas. In the end, the redesigned system is probably not an economically feasible option due to the significant increase in the building's weight but if there are restrictions on the floor to floor height it may be a desirable option.

Breadth studies were performed which focused on the aspects of a green roof design. An architectural breadth to produce a landscape design and planting plans for the roof was conducted and another breadth was performed that encompassed the building enclosure aspects of a green roof design.

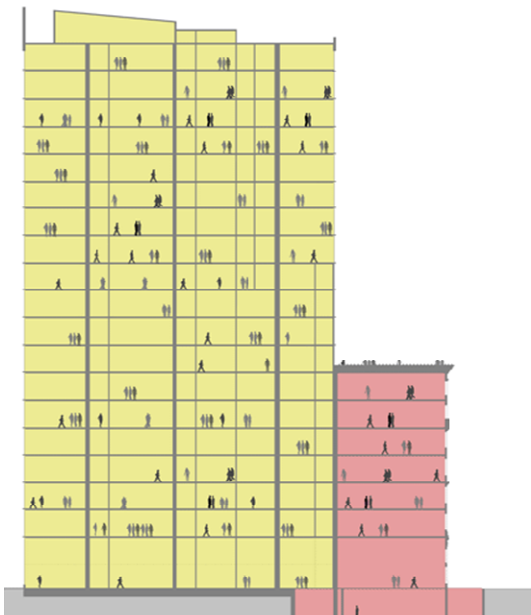
As a result of the breadth studies, a complete green roof system was created. The studies began with a concept and through the design process ended with a space that could be enjoyable for building occupants to relax and socialize.

## BACKGROUND

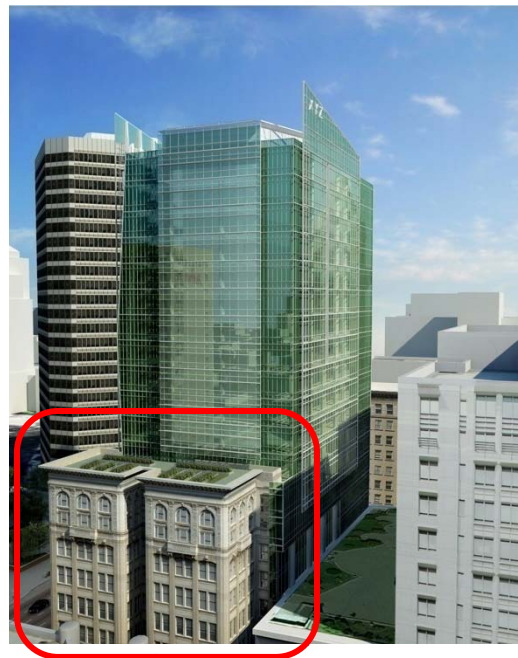
### *Building Overview*

1100 Broadway is a 20-story tower primarily used for offices but also provides shopping and entertainment at the ground level. Its architecture combines a new high-rise tower with the adaptive re-use of the Key System Building facade which houses a smaller portion of the building. The Key System Building is a 37,000 square foot historic office building which was damaged in the 1989 Loma Prieta earthquake and has remained vacant ever since. It is now a National Historic Landmark and its facade is incorporated into the design of the first eight floors of 1100 Broadway. See Figures 1 and 2 below.

**Figure 1:** Section view of 1100 Broadway. Tower portion is highlighted in yellow and Key System portion in red.

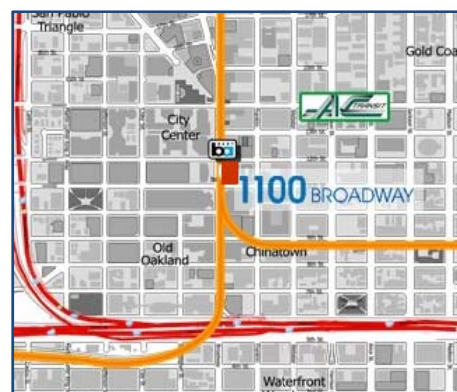


**Figure 2:** View of 1100 Broadway with Key System portion identified



Sustainability was a primary concern in the design of 1100 Broadway. It aims to achieve a LEED Gold rating by incorporating many green features into its design. It takes advantage of the opportunity to utilize Transit Oriented Development (TOD) due to its location directly above the 12th Street/City Center BART public transportation station. See Figure 3.

**Figure 3:** Transit Map



## BACKGROUND

---

It features photovoltaic solar panels on the tower roof, a green roof on the Key System Building portion, and a rainwater collection, filtration and reuse system. See Figures 4 and 5 below. The building envelope is comprised of high performance glass from floor to roof with large curtain walls on two of the four elevations. The high performance glass is "tuned" depending on which side of the building it's on: At the south and west facades, which receive more direct sun, the glass is slightly darker, at the north and east facades the glass is slightly clearer.

**Figure 4:** Solar Panels on tower roof



**Figure 5:** Rain water collection, filtration and reuse system with tank located under the building



## BACKGROUND

---

Additional renderings of 1100 Broadway can be seen in Figures 6 through 8 below.

**Figure 6:** Street view of retail at Ground Level



**Figure 7:** View of the southwest corner of 1100 Broadway



**Figure 8:** View of the northwest corner of 1100 Broadway





## BACKGROUND

### *Architectural Floor Plans*

Sample architectural floor plans are provided below in Figures 9 through 11.

**Figure 9:** Ground Level Plan  
(Retail)



**Figure 10:** Typical Levels 3-8  
(Office Plan)



**Figure 11:** Typical Levels 9-Roof  
(Office Plan)



## **BACKGROUND**

---

### ***Structural System***

Typical office floors are 3¼" light weight concrete fill on a 3" 18 gage Verco W3 Formlock composite steel deck for a total thickness of 6¼". Composite steel beams support the deck. Columns supporting the composite deck are standard structural steel wide flange sections. Mechanical areas are similar to the typical office floors with the exception of normal weight concrete fill in place of the lightweight fill on composite metal deck. The roof system on the tower portion of the structure consists of the same composite steel deck system as the typical office floors.

Wind and earthquake forces are resisted by a dual system composed of Steel Special Concentric Braced Frames located around and across the building core and Special Moment Resisting Frames (SMRF) at the building perimeter. Braces are wide flange members with welded connections. Diagonal bracing member sizes range from W12x96 to W14x132. Member sizes of the moment resisting frames range from W24x94 to W24x207. Lateral forces are distributed to the SMRF at the perimeter of the building and the loads are distributed to surrounding members based on their relative stiffnesses with a higher percentage of the load being distributed to the stiffer members.

The main tower of the building is supported by 110 ton, 14"-square, driven prestressed precast concrete piles beneath a reinforced concrete mat foundation. The structure utilizes 117 existing 14" square piles and requires 334 new 70'-0" long prestressed concrete piles. The concrete mat slab is 5'-9" thick with #11 bars spaced at 12" O.C. each way on both faces. The remaining portion of the foundation is a 9" thick reinforced concrete slab with #5 bars spaced at 12" O.C. Framing within Key System portion of the structure is supported by 6'-0" square spread footings.

### ***Existing Framing Plans and Frame Elevations***

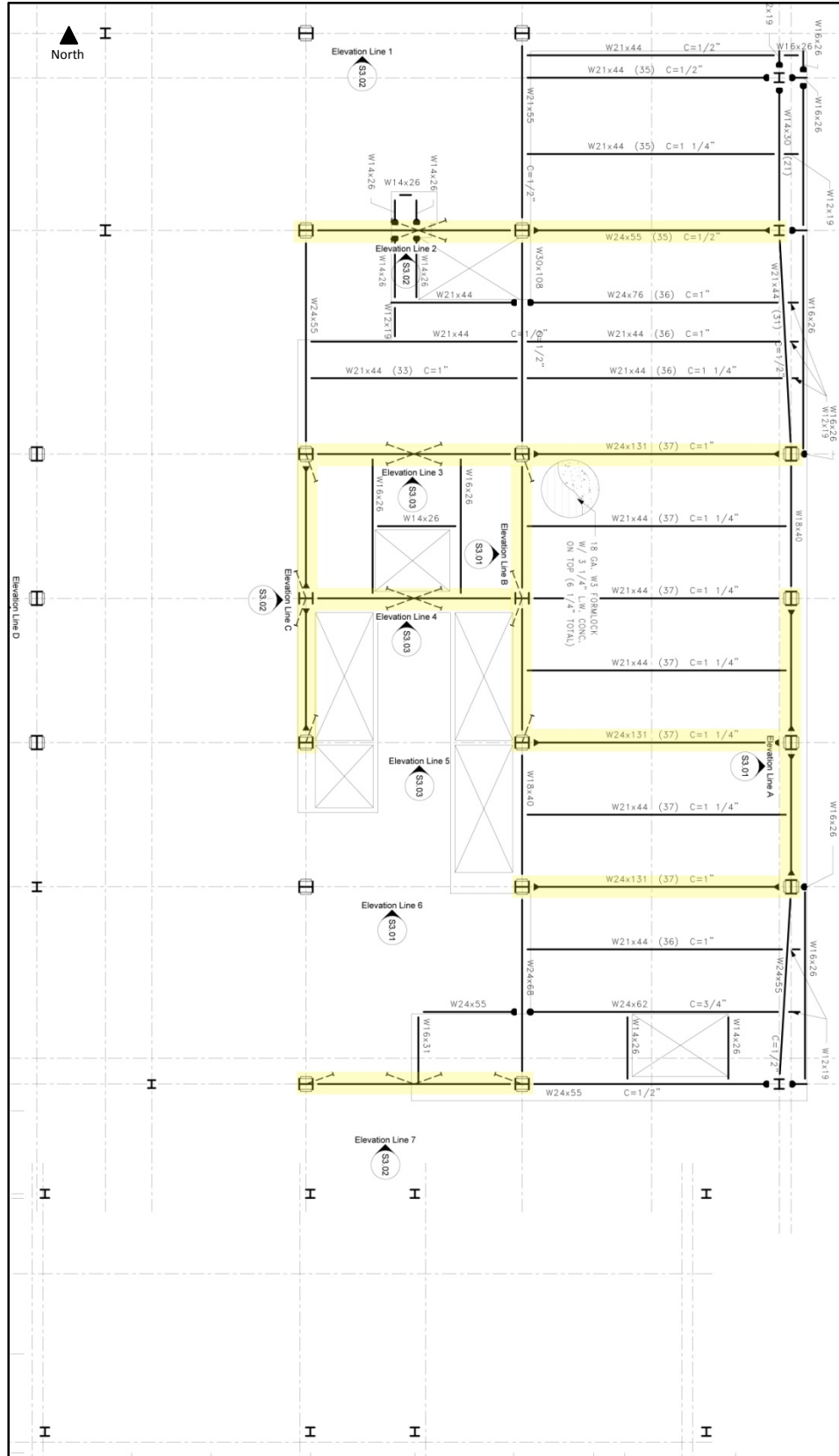
Existing framing plans of the composite steel deck system and supporting steel members are provided for reference. The Lateral Force Resisting System is highlighted in yellow. Level 2 is a unique floor which acts as a mezzanine to the ground floor below, see Figure 12. For a typical framing plan of Levels 3 through 9 see Figure 13. Notice the Key System facade encloses the southern portion of 1100 Broadway up to Level 9 then terminates. For a typical framing plan of the remaining Levels see Figure 14. Frame elevations of the lateral system composed of steel special moment and braced frames are also provided in Figures 15 through 17.

Sonja Hinish  
 Structural Option  
 1100 Broadway, Oakland, CA

April 7, 2009  
 Advisor: Dr. Hanagan  
 Final Report

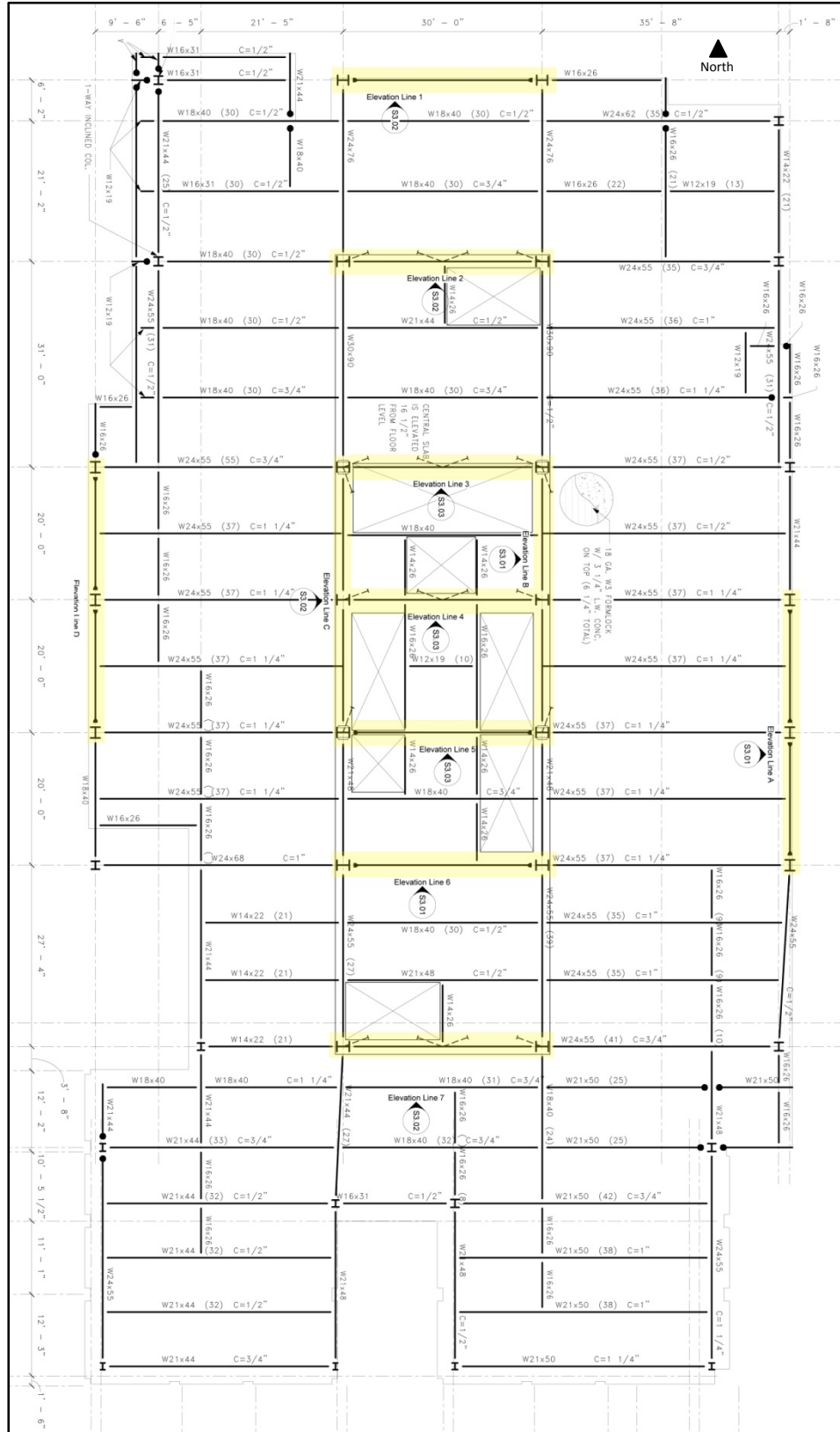
**BACKGROUND**

**Figure 12:**  
 Existing Framing Plan  
 Level 2



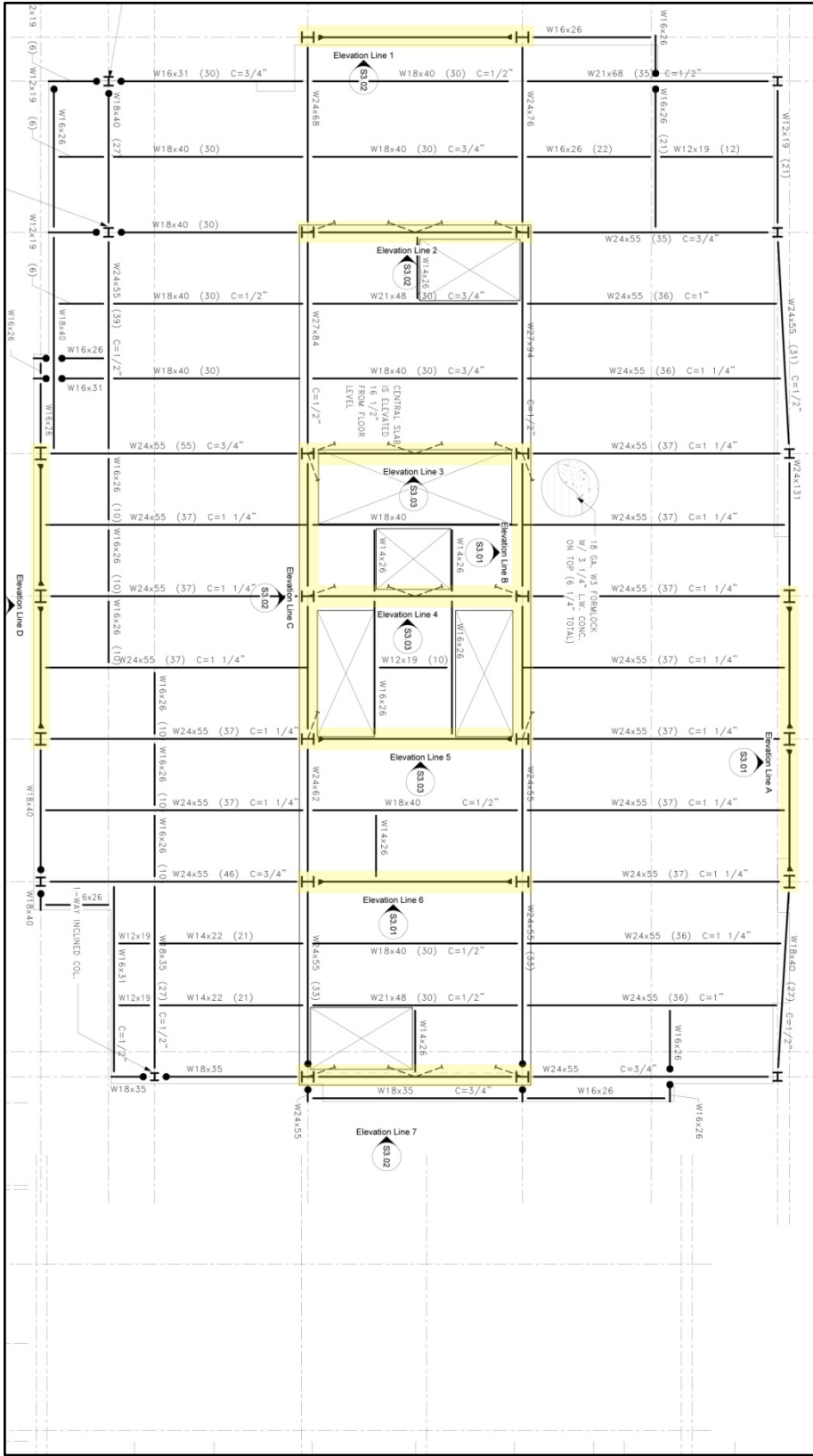
### BACKGROUND

**Figure 13:**  
Typical Existing Framing  
Plan for Levels 3-9



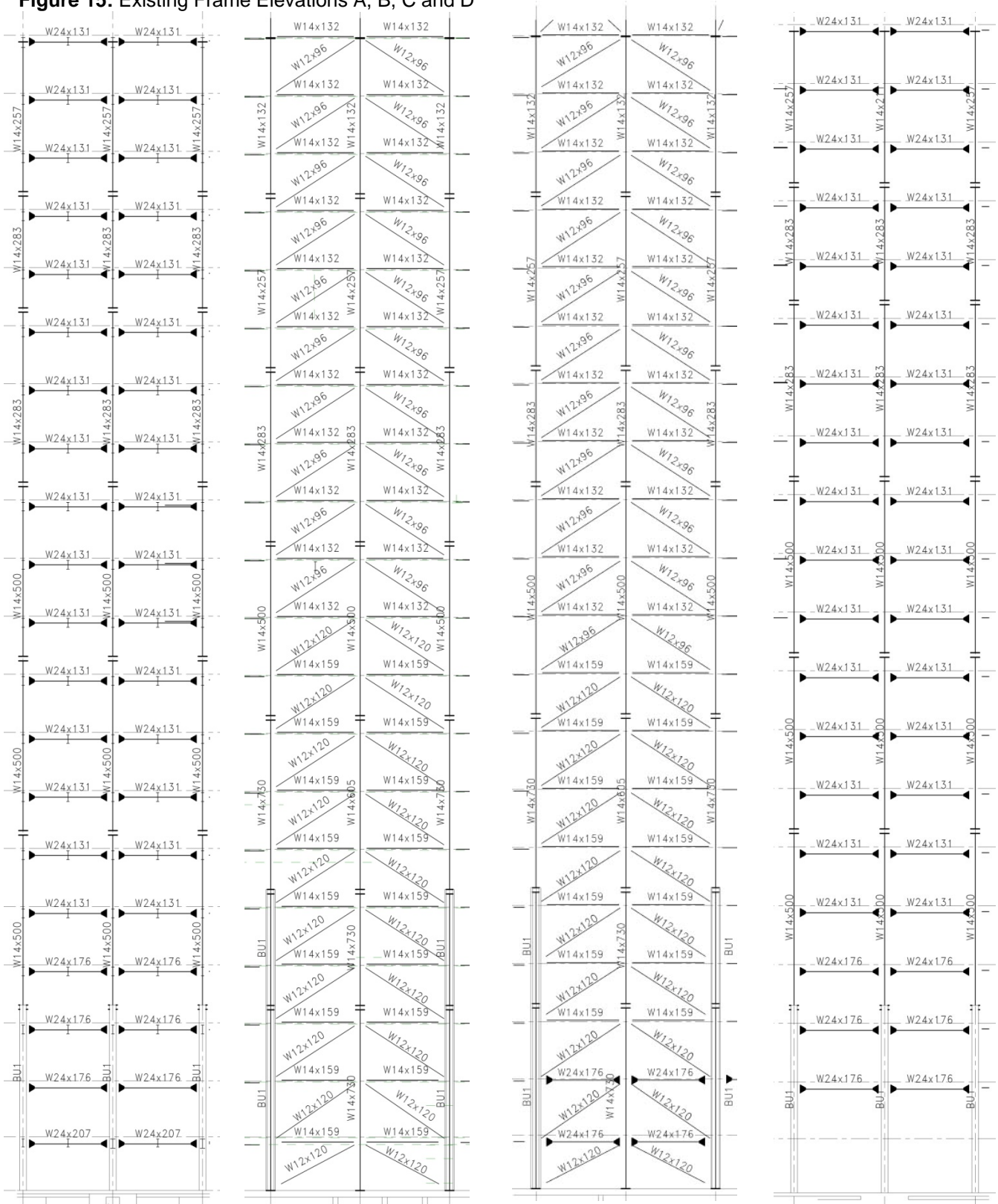
**BACKGROUND**

**Figure 14:**  
Typical Existing Framing  
Plan for Levels 10-Roof



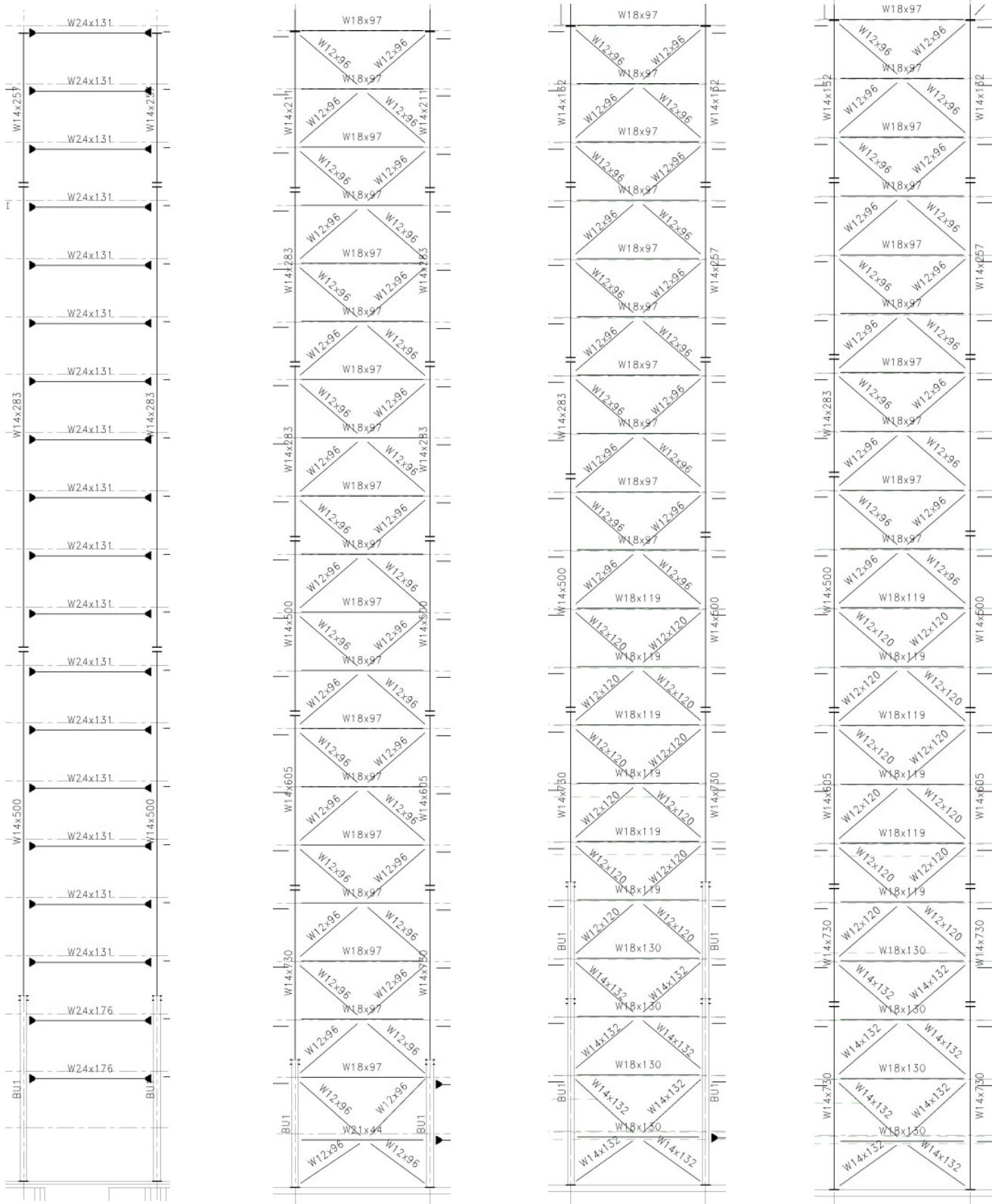
## BACKGROUND

Figure 15: Existing Frame Elevations A, B, C and D



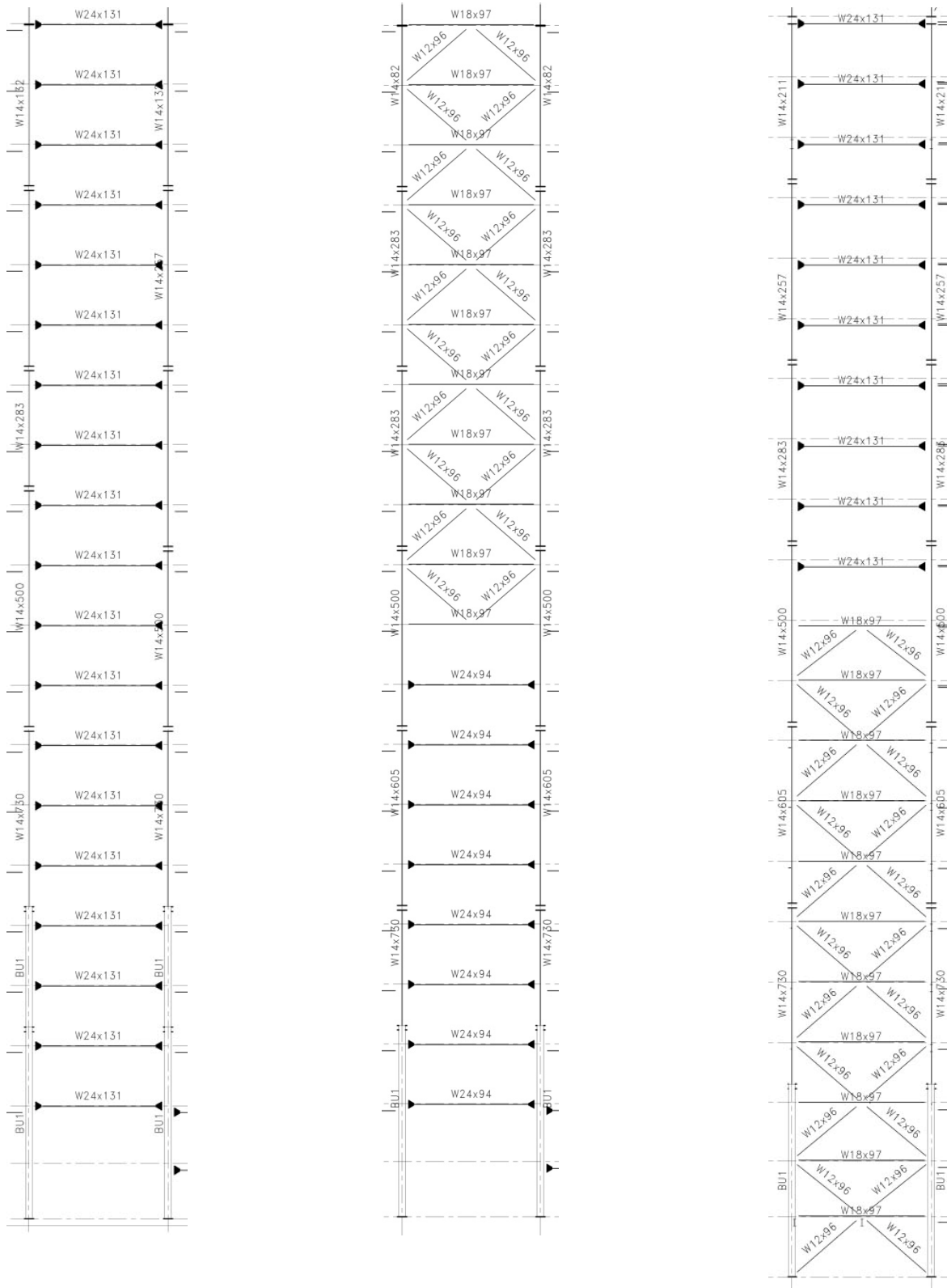
## BACKGROUND

Figure 16: Existing Frame Elevations 1,2,3, and 4



## BACKGROUND

Figure 17: Existing Frame Elevations 5,6, and 7





## **STRUCTURAL SYSTEM REDESIGN FOR 1100 BROADWAY**

---

### ***Background***

1100 Broadway's current floor system is composite metal deck supported by composite steel beams. The assembly consists of a 3", 18 gage, W3 Verco Formlok deck with 3 ¼" lightweight concrete topping for a total slab depth of 6 ¼". The controlling parameter for the design of gravity members supporting the composite deck is deflection due to total load as determined in Technical Report 2. This required the member capacity to be significantly higher than the gravity load demands. The total depth of the composite metal deck system and supporting composite steel beams and girders amounts to 30.25". After investigating alternative types of floor systems it's been determined the depth of the floor system can be reduced.

### ***Solution***

Technical Report 2 provided an alternative system study of a 2-way post-tensioned concrete slab. The analysis yielded a 9" total system depth, reducing the current floor depth by approximately one-third. Another advantage of post-tensioned systems is very limited deflections due to the upward force exerted by the post-tensioning tendons. With closer observation, the rectangular geometry of most bays will result in a one-way behavior. Therefore, a one-way mild steel reinforced concrete slab with post-tensioned concrete beams was proposed for study. Concrete gravity columns were designed in place of the current steel columns.

A post-tensioned slab was not considered for study. A post-tensioned slab system would be very costly especially due to 1100 Broadway's 20-story building and therefore it is more economical to post-tension only the beams and have a mild steel reinforced slab. Another disadvantage of a post-tensioned slab is opening locations are critical, limiting the placement of openings throughout the entire structure. Opening locations for a mild steel reinforced slab are not nearly as critical and can accommodate most plans.

The one-way slab and post-tensioned beam system will most likely be deeper than the 2-way post-tensioned slab previously studied, but the depth of the floor system should still be significantly reduced. Although the floor system depth will be reduced, concrete systems are usually heavier than steel systems and the impact of the proposed system on the foundations was also investigated. The current lateral system of steel moment and braced frames is no longer a viable system for the proposed concrete slab and post-tensioned beams. A change of lateral system was necessary and concrete shear walls make for the best alternative lateral system due to the 20-story height of the building.

## **STRUCTURAL SYSTEM REDESIGN FOR 1100 BROADWAY**

---

### ***Senior Thesis Project Goals***

One goal of my senior thesis project is to reduce the depth of the floor system. This could have many economical benefits such as reduced floor to floor height amounting in an overall reduction in building height and potential savings related to the facade and building envelope. The second goal was to become familiar with the design of post-tensioned systems.

### ***Building Relocation***

Early in the spring semester it was brought to my attention that my original thesis proposal to design a concrete system with shear walls for the 260 ft tall 1100 Broadway in Oakland, California, was not a feasible option. According to ASCE 7-05, Table 12.2-1 and section 12.2.5.4, special reinforced concrete shear walls are limited to structures of 240 ft or less in locations corresponding to Seismic Design Category D. By moving the building out of Seismic Design Category D to a location with less seismic activity, the building height is no longer limited.

Therefore, 1100 Broadway will be designed for relocation in Columbus, Ohio, which corresponds to Seismic Design Category B. Ordinary reinforced concrete shear walls are permitted for the seismic force-resisting system. The site selection is somewhat arbitrary. The only goal was to remove the building from a Seismic Design Category D location. This change allows for a focus on the post-tensioning design of the gravity system rather than heavy seismic detailing of the lateral system.

### ***MAE Topics***

An ETABS model was created to analyze the new lateral composed of ordinary reinforced concrete shear walls arranged around the core of the building. The lateral analysis section details the ETABS model's role in the design process. This portion of the study is an extension of AE 597A, Computer Modeling, and is intended to fulfill the MAE requirement for the senior thesis project.

The breadth studies focus on the complete design of a green roof system and are an extension of AE 542, Building Enclosures. They are also intended to fulfill the MAE requirement.

## STRUCTURAL SYSTEM REDESIGN FOR 1100 BROADWAY

---

### *Design Criteria*

#### *Design Loads*

A superimposed dead load of 20 psf for mechanical systems, floor finishes, and other miscellaneous loads was used in calculations. A live load of 80 psf for office floors and a roof live load of 20 psf were used in the design. ASCE 7-05 requires a minimum live load of 100 psf for lobbies and first floor corridors and a live load of 80 psf for corridors above the first floor. Typical floors are open office plans with no designated corridors and therefore a live load of 80 psf was used in calculations in lieu of the 50 psf office load to be conservative since partition layout in the offices is subject to change.

#### *Software*

PCA Slab was used to check deflections and design reinforcing for the one-way mild steel reinforced slab. PCA Column was used to design column reinforcing and confirm shear wall reinforcing designed by hand methods. RAM Concept was the only software program available capable of post-tension design and was used to model the post-tensioned beams. An ETABS model of the lateral system was created to assist with the drift analysis. It was necessary to use a variety of software programs because no program was capable of modeling the entire structural system as one entity. Only components of the structural system could be modeled or designed by each program.

#### *Codes*

ASCE 7-05 and IBC 2006 were referenced to determine the minimum design loads on the structure. ACI 318-08 was referenced for the design of concrete elements. Each software program refers to a specific edition of the above codes. See Table 1 below for each software program's use and the applicable code edition it references.

**Table 1:** Software program use and code reference

Program	Use	Code Edition
PCA Slab	One-way slab design	ACI 318-02
PCA Column	Shear wall reinforcing	ACI 318-02
	Column reinforcing	
RAM Concept	Post-tensioned beam design	ACI 318-02
ETABS	Lateral analysis	ACI 318-05

## STRUCTURAL SYSTEM REDESIGN FOR 1100 BROADWAY

### Gravity System Design

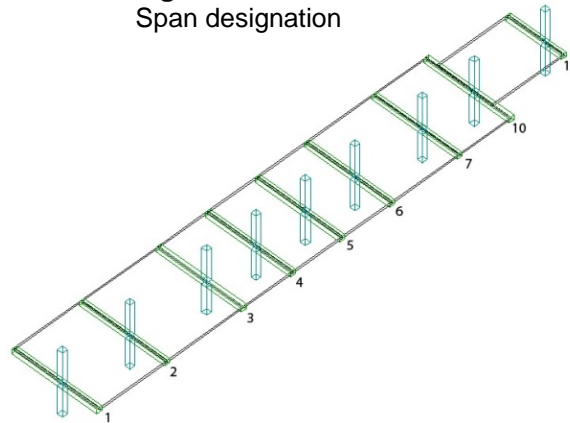
#### One-way Slab Design

A one-way mild steel reinforced slab was designed and spans the North/South direction. According to ACI 318-05 Chapter 9.5(a) the minimum thickness of one-way slabs unless deflections are calculated is  $l/24$  for slabs with one end continuous and  $l/28$  for both ends continuous. See Table 2 below for minimum thicknesses per span according to ACI. See span designations in Figure 18.

**Table 2:**  
Minimum slab thickness (h)  
according to ACI

Span	Length (ft)	h min	h min (in)
1-2	27.33	$l/24$	13.7
2-3	31	$l/28$	13.3
3-4	20	$l/28$	8.6
4-5	20	$l/28$	8.6
5-6	20	$l/28$	8.6
6-7	27.33	$l/28$	11.8
7-10	20.95	$l/38$	9.0
10-12	28.7	$l/24$	14.4

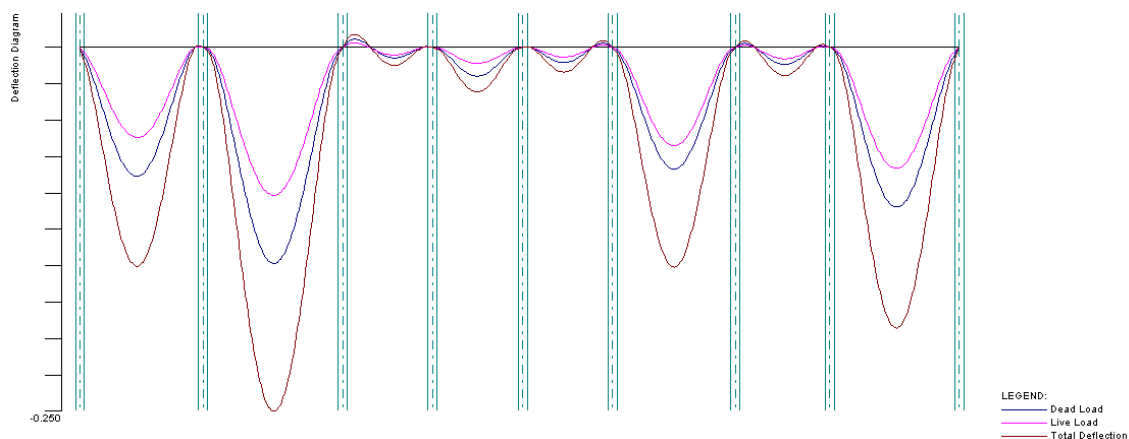
**Figure 18:**  
Span designation



Minimum thicknesses varied significantly from 8.6" to 14.4" and therefore instead of designing a slab with multiple thicknesses or a uniform slab with the minimum 14.4" depth it was beneficial to check deflections with the objective of achieving a more uniform and shallower slab. A 10" slab thickness was chosen for design which is slightly less than the average of the minimum thicknesses in Table 2.

Deflections for the 10" slab were calculated in PCA Slab. See Figure 19 below.

**Figure 19:** Slab deflections from PCA Slab



## STRUCTURAL SYSTEM REDESIGN FOR 1100 BROADWAY

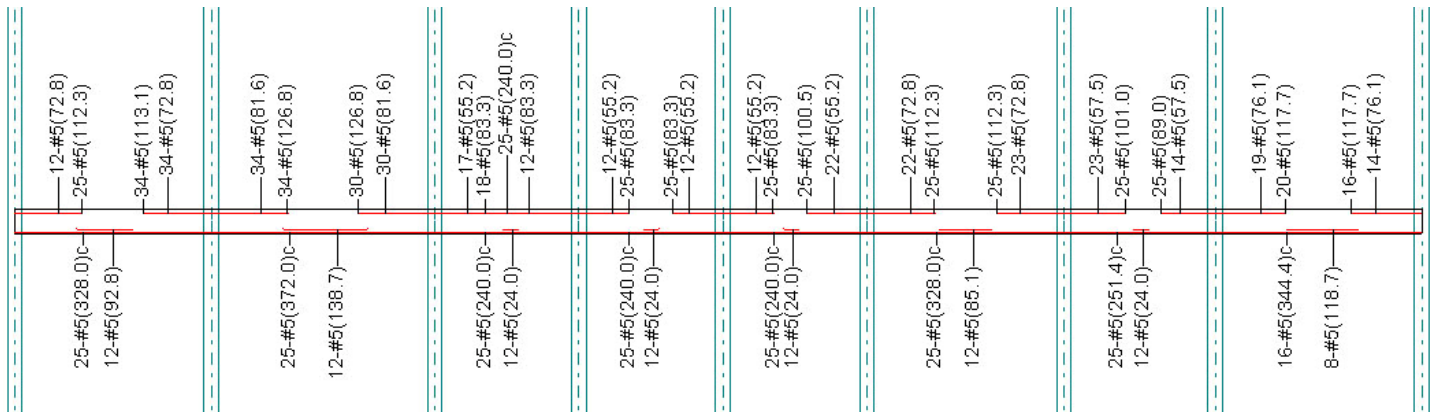
Long term deflections were calculated conservatively by multiplying the deflection due to dead load by 3 and adding it to the live load deflection. This value was compared with  $l/240$  to determine if the 10" slab thickness was sufficient for spans that were less than the minimum thickness according to ACI. See Table 3 for a comparison. All long-term deflections were less than the allowable deflection.

**Table 3:** Deflection Check

Span	Length (ft)	Deflections from PCA Slab		Long-term deflection	Allowable $\Delta$
		LL $\Delta$ (in)	DL $\Delta$ (in)	LL $\Delta$ + 3DL $\Delta$ (in)	$l/240$
1-2	27.33	0.062	0.088	0.326	1.4
2-3	31	0.102	0.149	0.549	1.6
3-4	20	-	-	-	-
4-5	20	-	-	-	-
5-6	20	-	-	-	-
6-7	27.33	0.067	0.084	0.319	1.4
7-10	20.95	-	-	-	-
10-12	28.7	0.083	0.11	0.413	1.5

An interior column line was modeled in PCA Slab and reinforcing for the 10" slab was designed. See Figure 20 below for reinforcing design. 60ksi reinforcing steel was used with #5 bars being typical for both top and bottom reinforcement.

**Figure 20:** Slab reinforcing details. Bar length indicated in parenthesis



## **STRUCTURAL SYSTEM REDESIGN FOR 1100 BROADWAY**

---

### *Post-tensioned Beam Design*

Post-tensioned beams were designed using RAM Concept and span across the column lines in the East/West direction. Post-tensioning applies a precompression to the beams which reduces the tensile stresses that often cause cracking once service loads are applied to the structure. In the original composite steel design deflections controlled the size of the supporting beams and girders. By post-tensioning the beams, deflections can be limited or even eliminated with the combination of service loads and the prestress force exerted by the tendons.

The drape of the tendons can be adjusted to create a vertical force on the beam. The force exerted by the tendon drape along with the applied prestress force creates an upward force on the beam. The best tendon profile is one that exerts an upward force on the beam equal to the downward force of the applied loads. After the concrete has been placed and has achieved a strength of 3000 psi the tendons are tensioned using jacks that react against the beams.

Four floors of 1100 Broadway were chosen to design which are meant to be representative of the entire structure. Level 2 is a non-typical level which acts as a mezzanine to the retail floor below. A floor typical of Levels 3-8 was designed which encompasses the entire footprint of the building. Level 9 features a green roof on the Key System portion and was chosen to design because it sees higher loads than the other typical office floors. Lastly, a floor typical of Levels 10-Roof was designed which covers a reduced floor area as a result of the setback in the geometry of the building.

A trial beam depth was chosen based on a ratio of span length divided by 22. The interior span of 37' is the longest span and based on the ratio of  $l/22$  a trial beam depth of 20" was chosen for the preliminary design. All beams were designed using twelve  $\frac{1}{2}$ " diameter unbonded tendons. The tendons were encased in a plastic sheathing and greased to prevent them from bonding to the concrete. The tendons are anchored at mid depth of the beam ends. In RAM Concept the tendon drape is measured from the bottom of the beam to the centroid of the tendon group. A 1.5" cover is required on prestressed cast-in-place concrete beams not exposed to weather or in contact with the ground and therefore the tendon profile at mid span of the beams was set at 1.5" and tendon profile over the column supports was set at 18.5".

The Concept model was initially run with the preliminary beam sizes and tendon drape. From the preliminary run the drape of the tendon and beam sizes were adjusted until a successful run was completed. Beams were analyzed as T or L sections to achieve their largest capacity. Many of the beams initially did not meet the serviceability requirements for flexural members according to ACI Chapter 18.4 for prestressed Class T members or they failed in shear according to ACI Chapter 11.4.

## STRUCTURAL SYSTEM REDESIGN FOR 1100 BROADWAY

To keep the report clear to read only a sampling of the floor plans will be provided in the body of the report and additional plans can be reproduced upon request. See Figure 21 below for beam locations and designations for a typical office floor for Levels 3-8. Mild-steel reinforced transverse beams 2, 3, and 4 were added (in blue) because the columns did not line up and the span was too long for a single beam (in yellow). Beam dimensions can be seen in Table 4 and 5. See Figure 22 for a perspective view of the floor plan.

**Figure 21:** Beam designations and locations for typical Levels 3-8 and Level 9



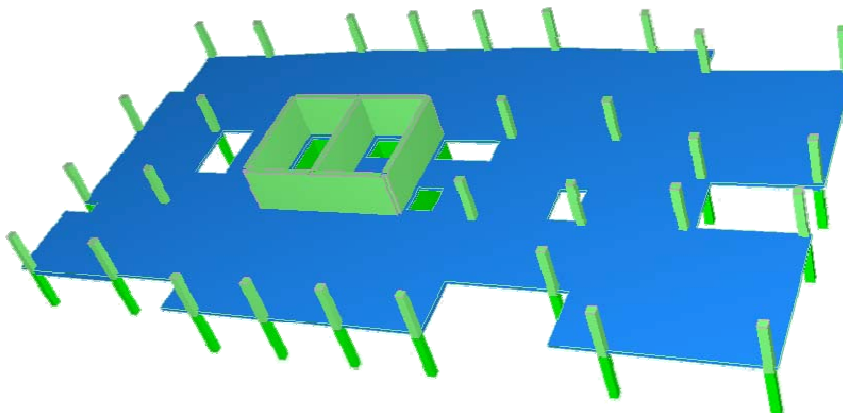
**Table 4:** Beam sizes for typical Levels 3-8

Number	Thickness (inches)	Width (inches)
1	22	26
2	22	20
3	22	20
4	22	20
5	18	18
6	20	20
7	22	26
8	20	24
9	20	22
10	18	18
11	16	18
12	16	18
13	16	18
14	18	20
15	16	20
16	16	20
17	18	22
18	20	22
19	22	26
20	22	26
21	22	26
22	22	22
23	18	22
24	18	22

**Table 5:** Beam sizes for Level 9

Number	Thickness (inches)	Width (inches)
1	22	26
2	22	20
3	22	20
4	22	22
5	18	20
6	18	18
7	22	26
8	22	24
9	22	24
10	18	20
11	16	18
12	16	18
13	16	18
14	18	20
15	16	20
16	16	20
17	18	22
18	18	22
19	22	26
20	24	30
21	24	30
22	22	24
23	18	22
24	22	24

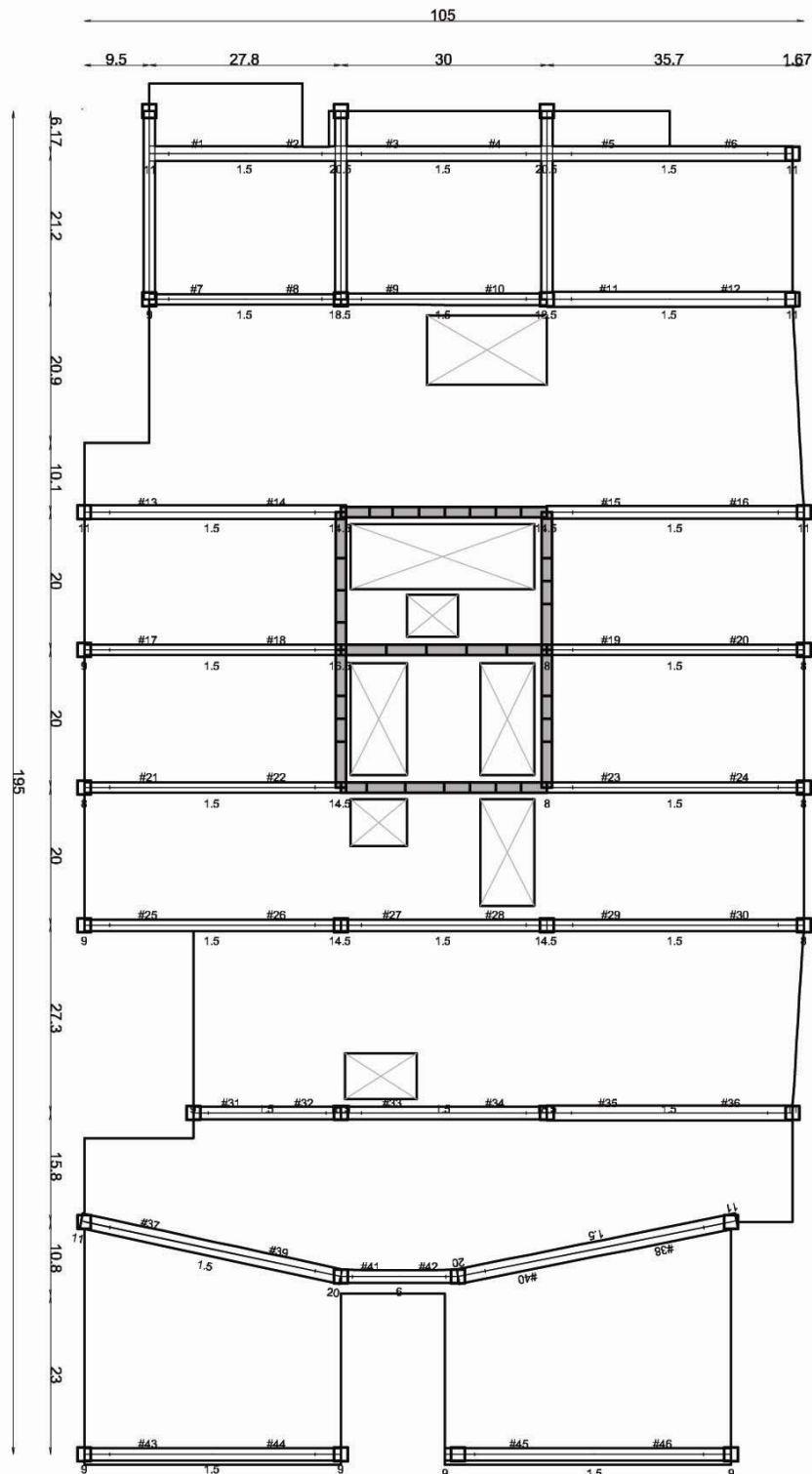
**Figure 22:** Levels 3-8 perspective view



## STRUCTURAL SYSTEM REDESIGN FOR 1100 BROADWAY

Tendon ends are numbered and their profile distance is given at midpoint of the beams and over supports. See Figure 23 below.

**Figure 23:** Tendon profile distances for typical Levels 3-8

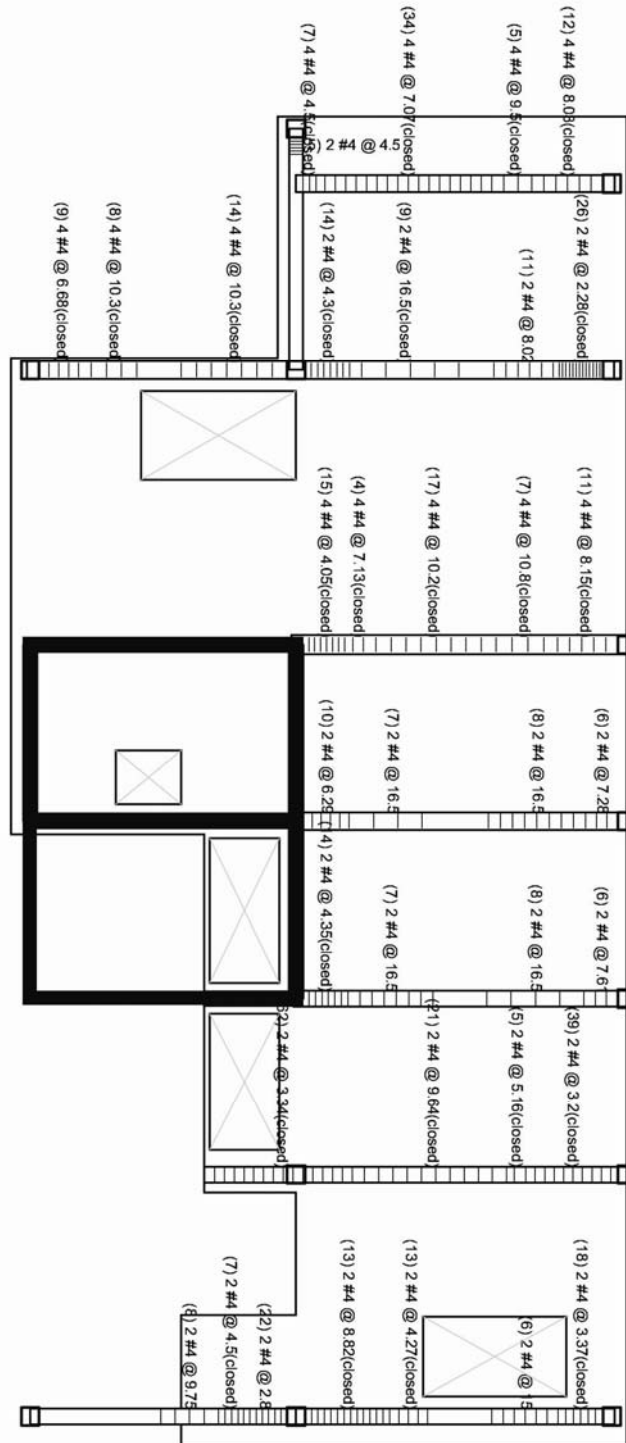




## STRUCTURAL SYSTEM REDESIGN FOR 1100 BROADWAY

Additional mild-steel was also required for the beams. #4 bars were used for shear and #8 for top and bottom reinforcing when necessary. See Figure 24 below for shear reinforcing for Level 2.

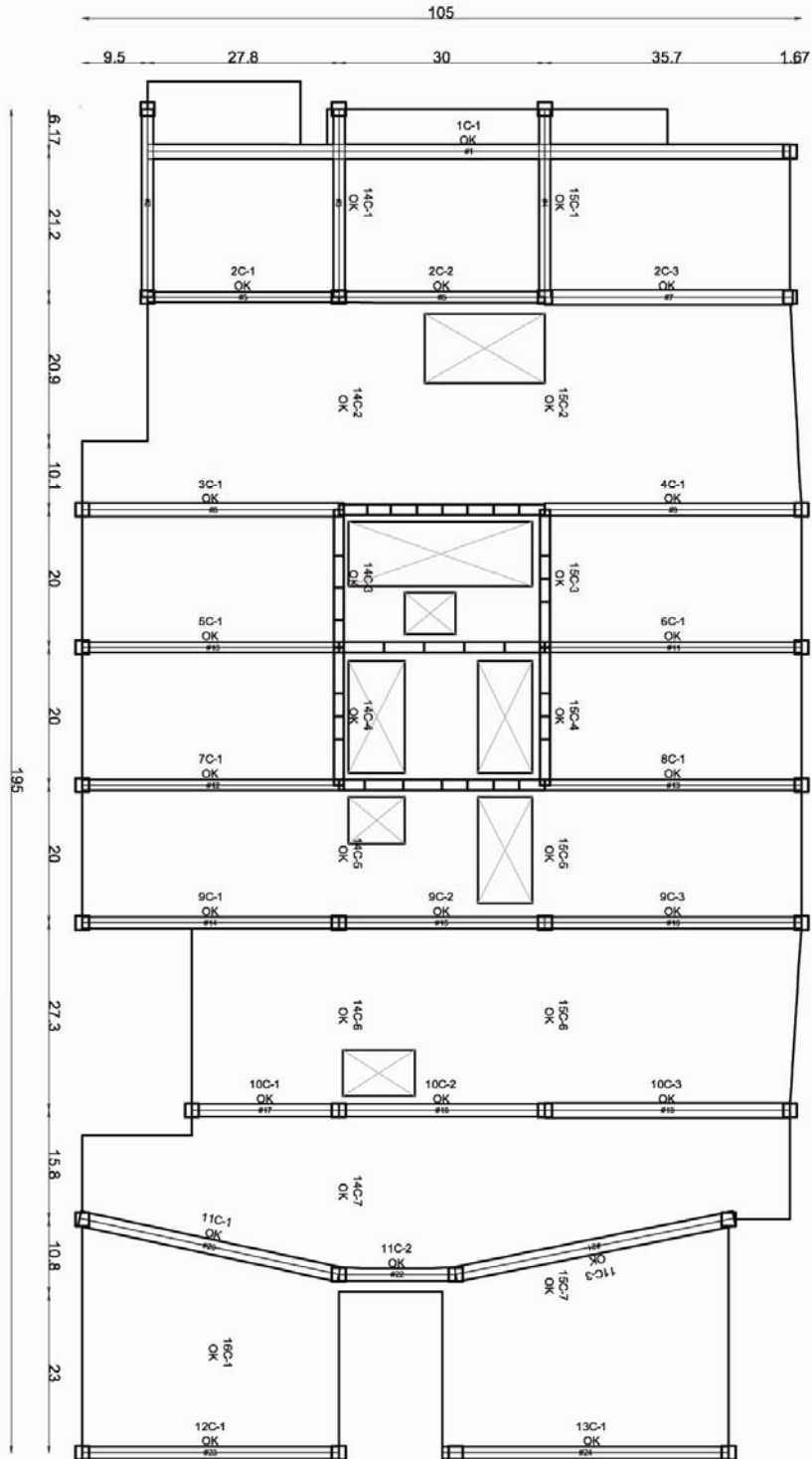
Figure 24: Shear reinforcing for Level 3 beams



### STRUCTURAL SYSTEM REDESIGN FOR 1100 BROADWAY

See Figure 25 below for a status plan confirming the post-tensioned beam design meets provisions set forth in ACI 318-02.

Figure 25: Status Plan for typical Levels 3-8

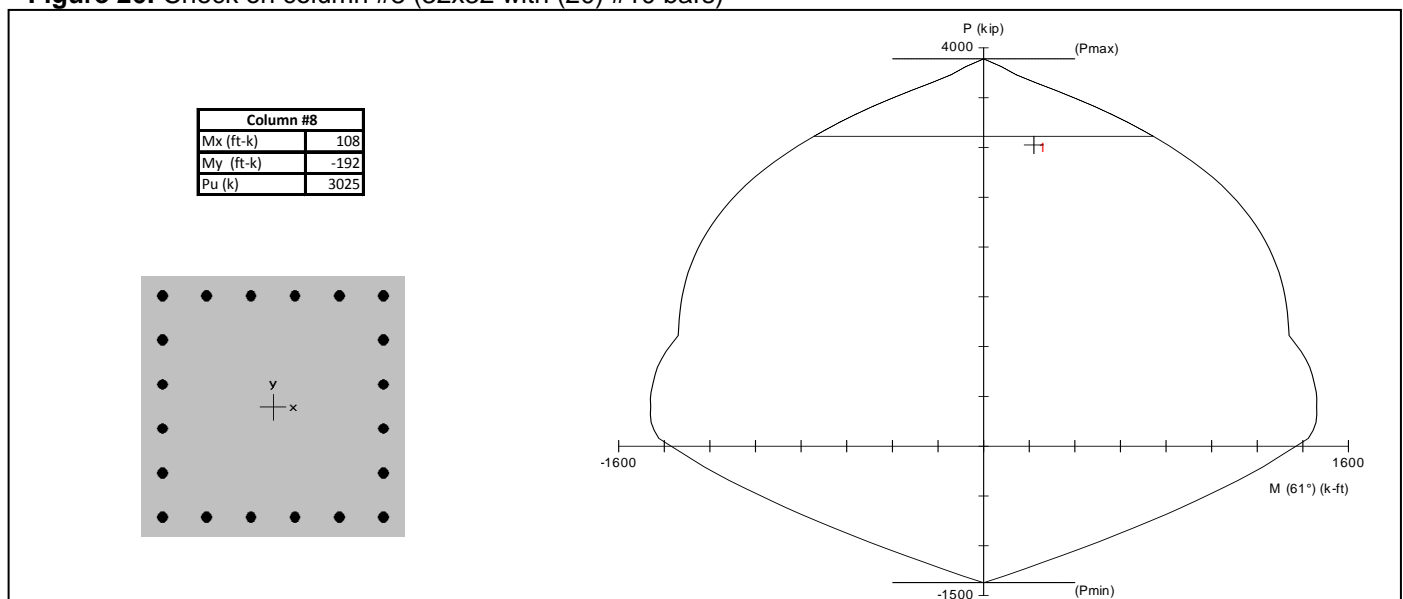


## STRUCTURAL SYSTEM REDESIGN FOR 1100 BROADWAY

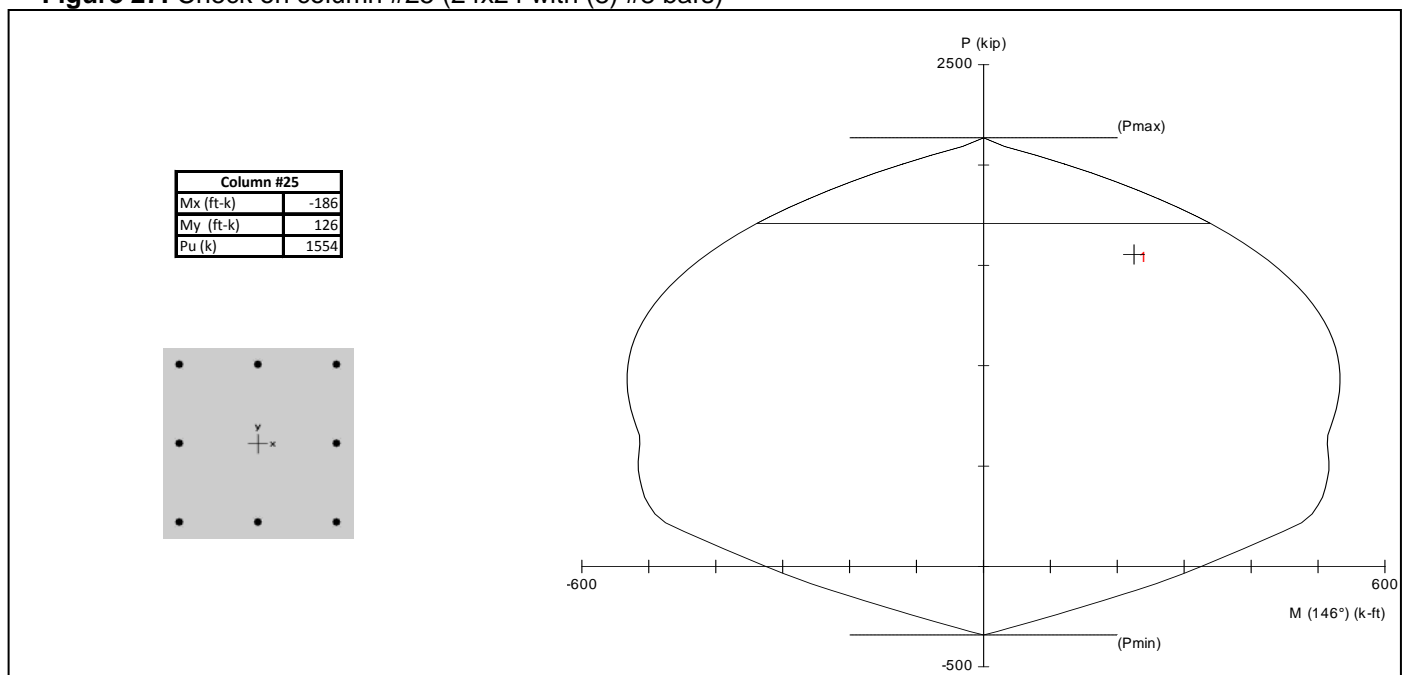
### Column Design

Columns were designed to handle the demands of the gravity system and were not members of the lateral system. The redesign of the gravity system resulted in an increase in gravity loads that the columns see. Columns are composed of concrete with a compressive strength of 6000 psi. Two critical columns were checked using PCA Column. A check on an exterior column can be seen in Figure 26 and a check on an interior column can be seen in Figure 27 below.

**Figure 26:** Check on column #8 (32x32 with (20) #10 bars)



**Figure 27:** Check on column #25 (24x24 with (8) #8 bars)



## **STRUCTURAL SYSTEM REDESIGN FOR 1100 BROADWAY**

---

### *Gravity System Design Summary and Conclusions*

The project goal of reducing the total depth of the floor system was met by switching from the existing composite metal deck and composite steel beam system to a one-way concrete slab and post-tensioned beam system. The original design was 30.25" deep and the largest beam size for the new system is 26x22 for all levels except for Level 9 which supports the green roof and has a maximum beam size of 30x24. This yields a total reduction of 8.25" in most areas and a 6.25" reduction for the portion supporting the green roof.

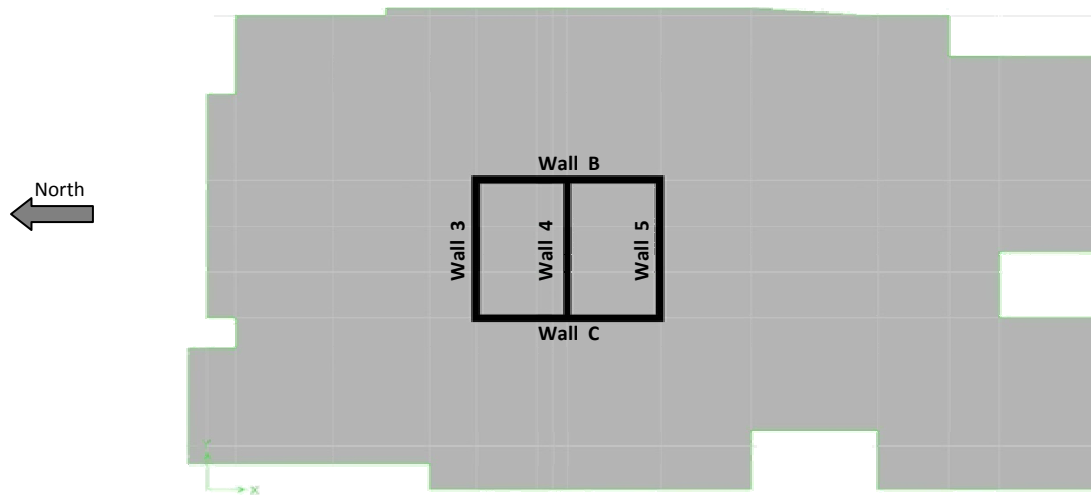
When checking live and dead load deflections many areas of the slab were on the high side, very close to the allowable limit. Most of the difficulty occurred in areas where the aspect ratio of the bays was relatively low. After designing a one-way system with post-tensioned beams it is possible that many of the design challenges that occurred may have been solved if a 2-way post-tensioned flat plate system were designed.

## STRUCTURAL SYSTEM REDESIGN FOR 1100 BROADWAY

### *Lateral System Design*

Ordinary reinforced concrete shear walls were chosen for the new lateral system. The first step in the design process was to determine a layout for the shear walls. The building is skinned from ground to roof in a glass curtain wall. This ruled out the option of placing shear walls at the perimeter of the building without requiring significant architectural changes. The existing structure utilized a core of steel special moment and braced frames. Drawing from the previous design, the concrete shear walls were placed at the same locations around the core for the preliminary design. Two 40' long shear walls will resist lateral forces in the North/South direction and three 30' long shear walls will resist lateral forces in the East/West direction. See Figure 28 below for the preliminary shear wall configuration.

**Figure 28:** Shear wall configuration



The next step in the design process was determining a preliminary thickness for the shear walls. The minimum thickness of the shear walls was limited by the shear strength of the concrete. Concrete with an  $f'_c$  equal to 6000 psi was chosen for the shear walls. A required shear strength of 232 psi was calculated using a conservative estimate of shear strength equal to  $3\sqrt{f'_c}$ . Using wind and seismic loads calculated according to ASCE 7-05, the total shear at each story was divided by phi factors of 0.75 for wind and 0.6 for seismic. The larger shears at each level were divided by the required shear strength of 232 psi to determine the area of concrete necessary to handle the shear forces. The required area in shear was then distributed to each wall and divided by its length to give a preliminary thickness. The required thicknesses

## STRUCTURAL SYSTEM REDESIGN FOR 1100 BROADWAY

based on wind loads were larger than those based on seismic loads and are provided below in Table 6 for reference. The minimum thickness required to resist shear forces is approximately 7" as highlighted below in the table. It is not advised to use a shear wall thickness less than 12" and to be conservative an 18" thickness was chosen for the design.

**Table 6:** Determination of preliminary shear wall thicknesses to resist wind forces

Level	Story Force (K)		Total Shear (lbs)		Total shear/.75 (lbs.)		Required area in shear (in <sup>2</sup> )	
	E/W	N/S	E/W	N/S	E/W	N/S	E/W	N/S
Roof	32.21	16.26	32207	16262	42943	21683	185	93
20	64.00	32.28	96203	48541	128270	64722	552	279
19	63.97	32.27	160177	80808	213569	107744	919	464
18	63.97	32.27	224151	113075	298869	150767	1286	649
17	63.72	32.12	287876	145196	383835	193595	1652	833
16	61.52	30.84	349400	176032	465867	234710	2005	1010
15	61.00	30.53	410405	206565	547207	275420	2355	1185
14	60.58	30.28	470981	236847	627974	315796	2702	1359
13	59.38	29.58	530361	266432	707149	355242	3043	1529
12	58.78	29.24	589146	295667	785527	394223	3380	1696
11	58.16	28.87	647301	324536	863068	432715	3714	1862
10	56.70	28.02	704003	352556	938670	470075	4039	2023
9	56.00	27.61	759998	380164	1013330	506885	4361	2181
8	54.50	26.74	814502	406900	1086003	542534	4673	2335
7	53.25	26.00	867751	432904	1157002	577205	4979	2484
6	51.62	25.05	919373	457957	1225830	610609	5275	2628
5	50.11	24.17	969487	482130	1292650	642840	5563	2766
4	48.32	23.12	1017805	505254	1357074	673672	5840	2899
3	44.70	21.06	1062508	526314	1416677	701752	6096	3020
2	37.82	17.55	1100330	543866	1467107	725155	6313	3121
Ground	16.92	7.84	1117249	551706	1489665	735608	6410	3166

Level	Required area in shear per wall (in <sup>2</sup> )						Preliminary thickness (in)				
	33% to each wall E/W			50% to each wall N/S			E/W			N/S	
	Wall 3	Wall 4	Wall 5	Wall B	Wall C		Wall 3	Wall 4	Wall 5	Wall B	Wall C
Roof	62	62	62	47	47		0.17	0.17	0.17	0.19	0.19
20	184	184	184	139	139		0.51	0.51	0.51	0.58	0.58
19	306	306	306	232	232		0.85	0.85	0.85	0.97	0.97
18	428	428	428	324	324		1.19	1.19	1.19	1.35	1.35
17	550	550	550	417	417		1.53	1.53	1.53	1.74	1.74
16	668	668	668	505	505		1.85	1.85	1.85	2.10	2.10
15	784	784	784	593	593		2.18	2.18	2.18	2.47	2.47
14	900	900	900	679	679		2.50	2.50	2.50	2.83	2.83
13	1013	1013	1013	764	764		2.81	2.81	2.81	3.18	3.18
12	1126	1126	1126	848	848		3.13	3.13	3.13	3.53	3.53
11	1237	1237	1237	931	931		3.44	3.44	3.44	3.88	3.88
10	1345	1345	1345	1011	1011		3.74	3.74	3.74	4.21	4.21
9	1452	1452	1452	1091	1091		4.03	4.03	4.03	4.54	4.54
8	1556	1556	1556	1167	1167		4.32	4.32	4.32	4.86	4.86
7	1658	1658	1658	1242	1242		4.61	4.61	4.61	5.17	5.17
6	1757	1757	1757	1314	1314		4.88	4.88	4.88	5.47	5.47
5	1852	1852	1852	1383	1383		5.15	5.15	5.15	5.76	5.76
4	1945	1945	1945	1450	1450		5.40	5.40	5.40	6.04	6.04
3	2030	2030	2030	1510	1510		5.64	5.64	5.64	6.29	6.29
2	2102	2102	2102	1560	1560		5.84	5.84	5.84	6.50	6.50
Ground	2135	2135	2135	1583	1583		5.93	5.93	5.93	6.59	6.59



## STRUCTURAL SYSTEM REDESIGN FOR 1100 BROADWAY

The shear reinforcing design for all of the walls consists of #5 bars at a minimum spacing of 10". After the shear reinforcing was designed by hand methods it was entered into PCA Column to check under flexural loads. A check on the shear wall reinforcing design at Level 4 was performed using PCA Column. Level 4 was checked because it is the most critical typical floor. After placing openings in the walls they were grouped into two piers as seen in Figures 29 and 30 below and were entered into PCA Column to determine their flexural capacity. Axial loads on each pier were determined using RAM Concept and applied to each pier. 1.2D+1.6L+0.5Lr was the critical load combination as highlighted in red. See Table 9 below. Moments due to lateral forces were determined using ETABS and were applied simultaneously to the piers. See Table 10 for flexural loads applied to each pier.

Figure 29: Pier 1

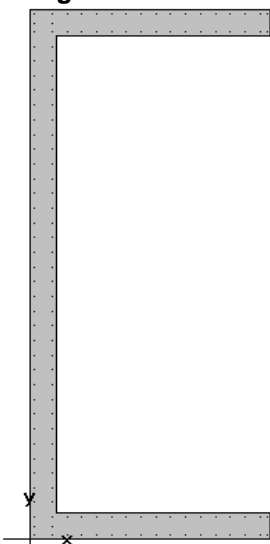


Figure 30: Pier 2

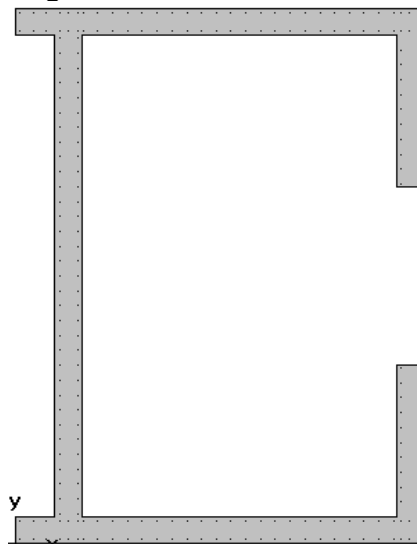


Table 9:

Axial load on shear walls supporting typical floors

For a typical floor: Level 10-Roof					
1.4D			1.2D+1.6L+0.5Lr		
	PIER 1	PIER 2		PIER 1	PIER 2
Wall	axial load (k)	axial load (k)	Wall	axial load (k)	axial load (k)
3	226		3	324	
4		30	4		14.8
5		129	5		190
B	59	164	B	92.5	250.5
C	58.5	167.5	C	89.5	254.5
total	343.5	490.5	total	506	709.8
For a typical floor: Level 4-9					
1.4D			1.2D+1.6L+0.5Lr		
	PIER 1	PIER 2		PIER 1	PIER 2
Wall	axial load (k)	axial load (k)	Wall	axial load (k)	axial load (k)
3	199		3	277	
4		86.8	4		110
5		115	5		165
B	70.5	211.5	B	82.75	248.25
C	52.25	156.75	C	80.75	242.25
total	321.75	570.05	total	440.5	765.5
Shear walls supporting Level 4 support 18 floors:					
total axial (k)	6053	9306		8715	13111

Table 10:

Ultimate factored moments from ETABS

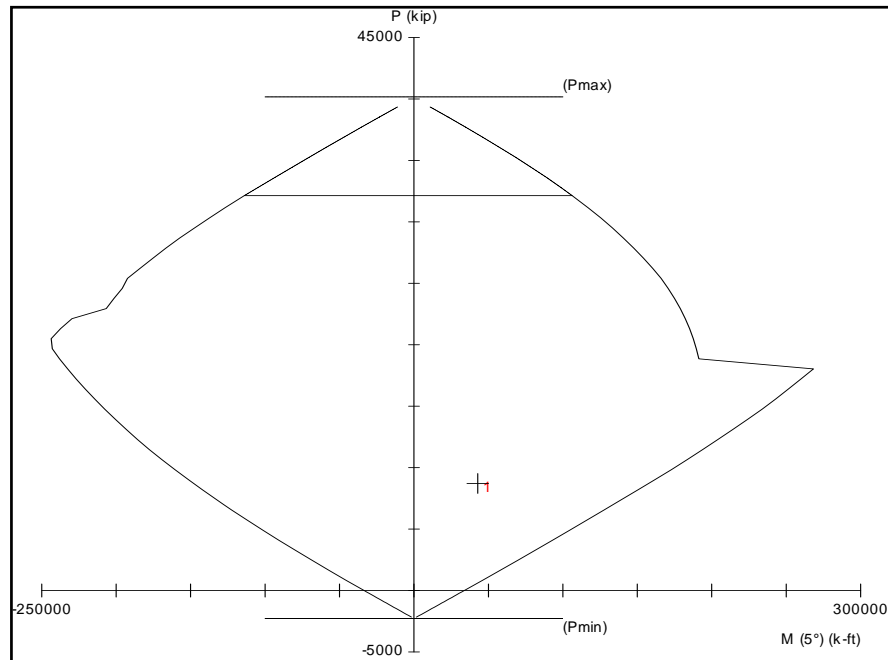
Pier 1	
Mu (y-axis) ft-k	Mu (x-axis) ft-k
23809	49211
Pier 2	
Mu (y-axis) ft-k	Mu (x-axis) ft-k
23809	85367



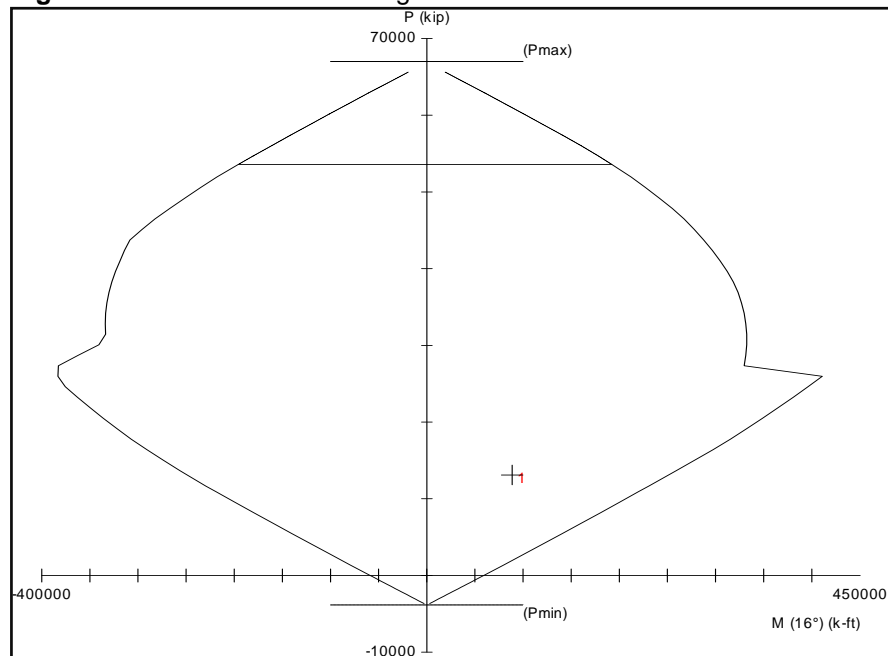
## STRUCTURAL SYSTEM REDESIGN FOR 1100 BROADWAY

The ultimate factored moments and axial loads were plotted on interaction diagrams to check if they were within the shear wall's capacity. Reinforcing in both piers 1 and 2 is sufficient to carry the applied loads as seen in Figures 31 and 32 respectively. Notice the interaction diagram is not symmetrical. This is a result of biaxial loading on the shear walls due to their geometry.

**Figure 31: Pier 1 Interaction Diagram**



**Figure 32: Pier 2 Interaction Diagram**

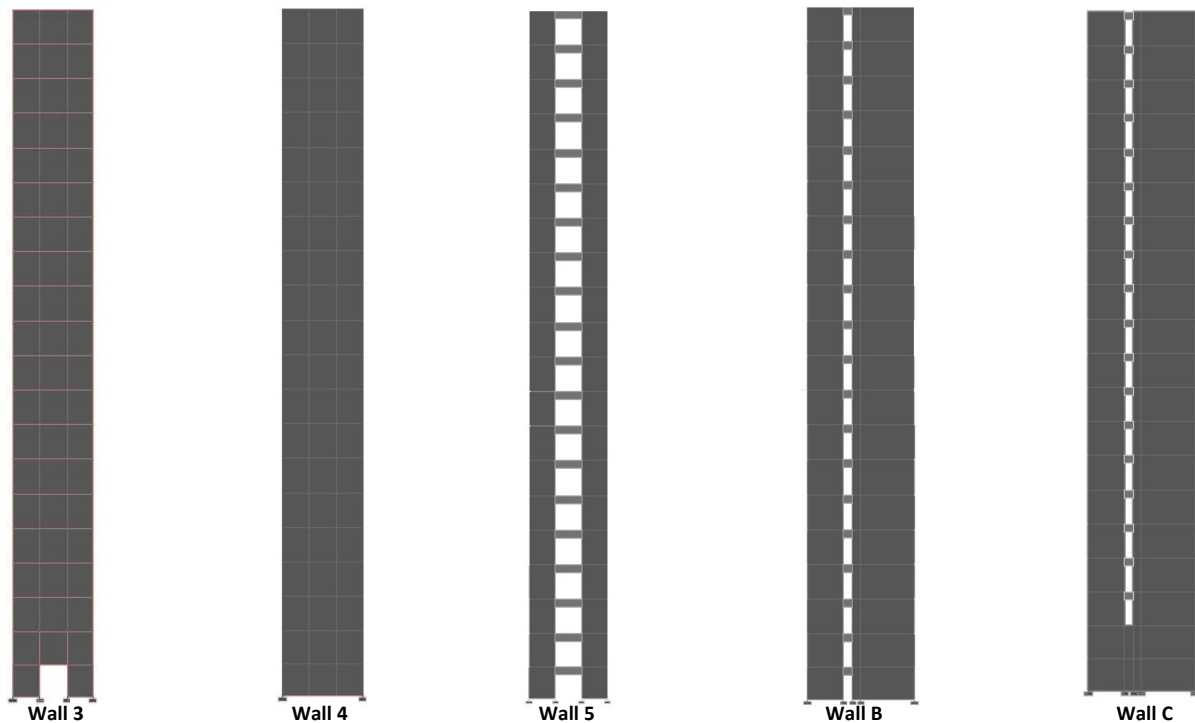


## STRUCTURAL SYSTEM REDESIGN FOR 1100 BROADWAY

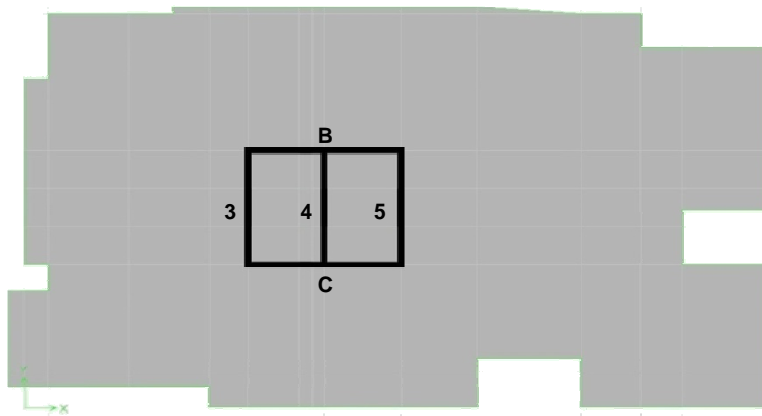
### *Shear wall design summary*

The final lateral system design consists of 18" ordinary reinforced concrete shear walls arranged around the core of the building. Walls 3 through 5 are 30' long and resist lateral forces in the East/West direction. Walls B and C are 40' long and resist lateral forces in the North/South direction. See Figure 33 below for shear wall elevations and Figure 34 for their corresponding locations on the plan. Horizontal and vertical reinforcing consists of two rows of #5 bars spaced at 10" O.C. See Figure 35 for a section view of the reinforcing.

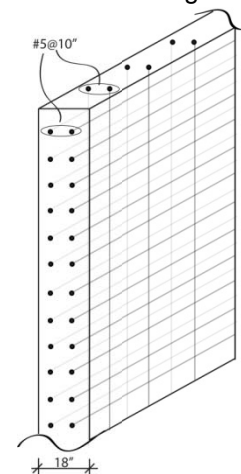
**Figure 33:** Shear wall elevations



**Figure 34:** Plan of shear wall locations



**Figure 35:** Reinforcing section



## STRUCTURAL SYSTEM REDESIGN FOR 1100 BROADWAY

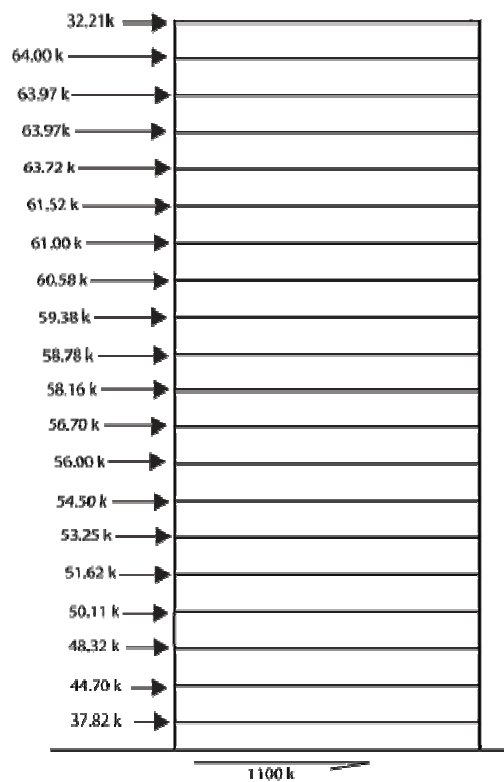
### *Lateral Analysis*

A drift analysis was performed to determine whether the structure meets the appropriate deflection criteria when subjected to lateral loads. It was necessary to recalculate wind and seismic loads for the building's relocation to Columbus, Ohio. Loads were determined in accordance with ASCE 7-05 and applied to the structure in ETABS. According to ACI 318-08 section 8.8.2 Lateral deflections shall be computed using 50 percent of the stiffness values of lateral elements based on gross section properties. Therefore the modulus of elasticity of the lateral elements was reduced by 50 percent to directly affect flexure, axial, and shear stiffness.

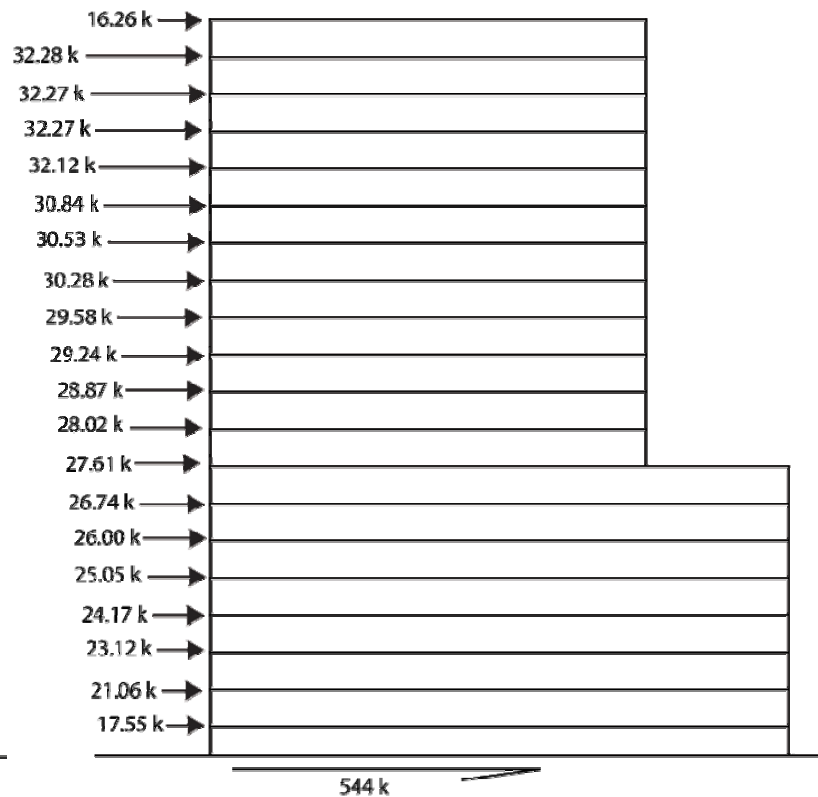
### *Wind*

Wind forces seen in Figures 36 and 37 below were applied at the center of pressure of the structure in ETABS.

**Figure 36:**  
Wind story forces x-direction (E/W)



**Figure 37:**  
Wind story forces y-direction (N/S)



## STRUCTURAL SYSTEM REDESIGN FOR 1100 BROADWAY

The maximum displacement at each level was compared with the industry standard serviceability criterion of  $h/400$ . The total building drift in both the x and y directions were within the allowable building drift limits as seen in Table 11 below.

**Table 11:** Total drift at each level due to wind

Level	Height (ft)	Floor to Floor H (ft)	Wind		
			Allow. drift (in)	disp. WX (in)	disp. WY (in)
Roof	258.50	13.00	<b>7.755</b>	1.416	4.916
20	245.50	13.00	<b>7.365</b>	1.336	4.695
19	232.50	13.00	<b>6.975</b>	1.255	4.470
18	219.50	13.00	<b>6.585</b>	1.173	4.240
17	206.50	13.00	<b>6.195</b>	1.091	4.004
16	193.50	13.00	<b>5.805</b>	1.007	3.761
15	180.50	13.00	<b>5.415</b>	0.922	3.512
14	167.50	13.00	<b>5.025</b>	0.837	3.257
13	154.50	13.00	<b>4.635</b>	0.752	2.997
12	141.50	13.00	<b>4.245</b>	0.667	2.733
11	128.50	13.00	<b>3.855</b>	0.584	2.465
10	115.50	13.00	<b>3.465</b>	0.502	2.196
9	102.50	13.00	<b>3.075</b>	0.421	1.931
8	89.50	13.00	<b>2.685</b>	0.345	1.601
7	76.50	13.00	<b>2.295</b>	0.272	1.268
6	63.50	13.00	<b>1.905</b>	0.203	0.942
5	50.50	13.00	<b>1.515</b>	0.141	0.631
4	37.50	13.00	<b>1.125</b>	0.087	0.350
3	24.50	12.50	<b>0.735</b>	0.041	0.117
2	12.00	12.00	<b>0.360</b>	0.014	0.039

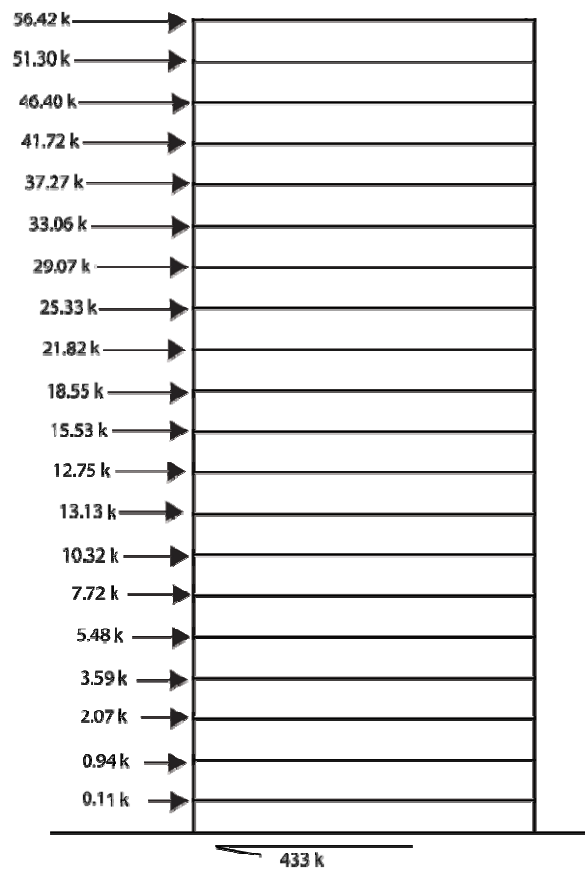
Displacement values taken from ETABS

## STRUCTURAL SYSTEM REDESIGN FOR 1100 BROADWAY

### Seismic

Seismic forces seen in Figure 38 below were applied to the ETABS model at the center of mass. The resulting displacements were taken from ETABS and compared with the allowable values. Accidental torsion was taken into account by assuming a displacement of the center of mass each way from its actual location by a distance equal to 5 percent of the dimension of the structure perpendicular to the direction of the applied forces. Determination of an amplification factor was not necessary due to the structure's location in Seismic Design Category B.

**Figure 38:** Seismic forces at each level



## STRUCTURAL SYSTEM REDESIGN FOR 1100 BROADWAY

Deflections computed at the center of mass were used to calculate the seismic story drift. The story drifts were determined by multiplying the values from ETABS by the deflection amplification factor (Cd) which is 4.5 for ordinary reinforced concrete shear walls and dividing by an importance factor of 1.0. The values were compared to the allowable story drift due to seismic forces according to ASCE 7-05 equal to 0.02 times the story height. The story drift in both the x and y directions were acceptable as seen in Table 12 below.

**Table 12:** Story drifts due to seismic forces

Level	Height (ft)	Floor to Floor H (ft)	Seismic						
			all. Story drift (in)	x-disp. (in)	x-story drift (in)	$\delta_x$ (in)	y-disp. (in)	y-story drift (in)	$\delta_y$ (in)
Roof	258.50	13.00	<b>3.12</b>	1.694	0.104	<b>0.466</b>	2.029	0.130	<b>0.585</b>
20	245.50	13.00	<b>3.12</b>	1.590	0.105	<b>0.473</b>	1.899	0.130	<b>0.586</b>
19	232.50	13.00	<b>3.12</b>	1.485	0.106	<b>0.478</b>	1.769	0.131	<b>0.590</b>
18	219.50	13.00	<b>3.12</b>	1.379	0.107	<b>0.482</b>	1.638	0.132	<b>0.592</b>
17	206.50	13.00	<b>3.12</b>	1.272	0.108	<b>0.486</b>	1.506	0.132	<b>0.593</b>
16	193.50	13.00	<b>3.12</b>	1.164	0.108	<b>0.486</b>	1.374	0.131	<b>0.590</b>
15	180.50	13.00	<b>3.12</b>	1.056	0.108	<b>0.484</b>	1.243	0.130	<b>0.585</b>
14	167.50	13.00	<b>3.12</b>	0.948	0.106	<b>0.479</b>	1.113	0.128	<b>0.576</b>
13	154.50	13.00	<b>3.12</b>	0.842	0.105	<b>0.470</b>	0.985	0.125	<b>0.563</b>
12	141.50	13.00	<b>3.12</b>	0.737	0.102	<b>0.458</b>	0.860	0.121	<b>0.546</b>
11	128.50	13.00	<b>3.12</b>	0.636	0.098	<b>0.441</b>	0.738	0.117	<b>0.524</b>
10	115.50	13.00	<b>3.12</b>	0.538	0.097	<b>0.438</b>	0.622	-0.017	<b>-0.076</b>
9	102.50	13.00	<b>3.12</b>	0.440	0.087	<b>0.393</b>	0.639	0.125	<b>0.564</b>
8	89.50	13.00	<b>3.12</b>	0.353	0.081	<b>0.365</b>	0.513	0.116	<b>0.524</b>
7	76.50	13.00	<b>3.12</b>	0.272	0.073	<b>0.330</b>	0.397	0.106	<b>0.478</b>
6	63.50	13.00	<b>3.12</b>	0.198	0.065	<b>0.290</b>	0.291	0.094	<b>0.422</b>
5	50.50	13.00	<b>3.12</b>	0.134	0.054	<b>0.244</b>	0.197	0.079	<b>0.355</b>
4	37.50	13.00	<b>3.12</b>	0.080	0.042	<b>0.189</b>	0.118	0.061	<b>0.276</b>
3	24.50	12.50	<b>3</b>	0.038	0.021	<b>0.095</b>	0.057	0.043	<b>0.195</b>
2	12.00	12.00	<b>2.88</b>	0.016	0.016	<b>0.074</b>	0.013	0.013	<b>0.059</b>

Displacement values taken from ETABS

Cd	4.5
I	1.0

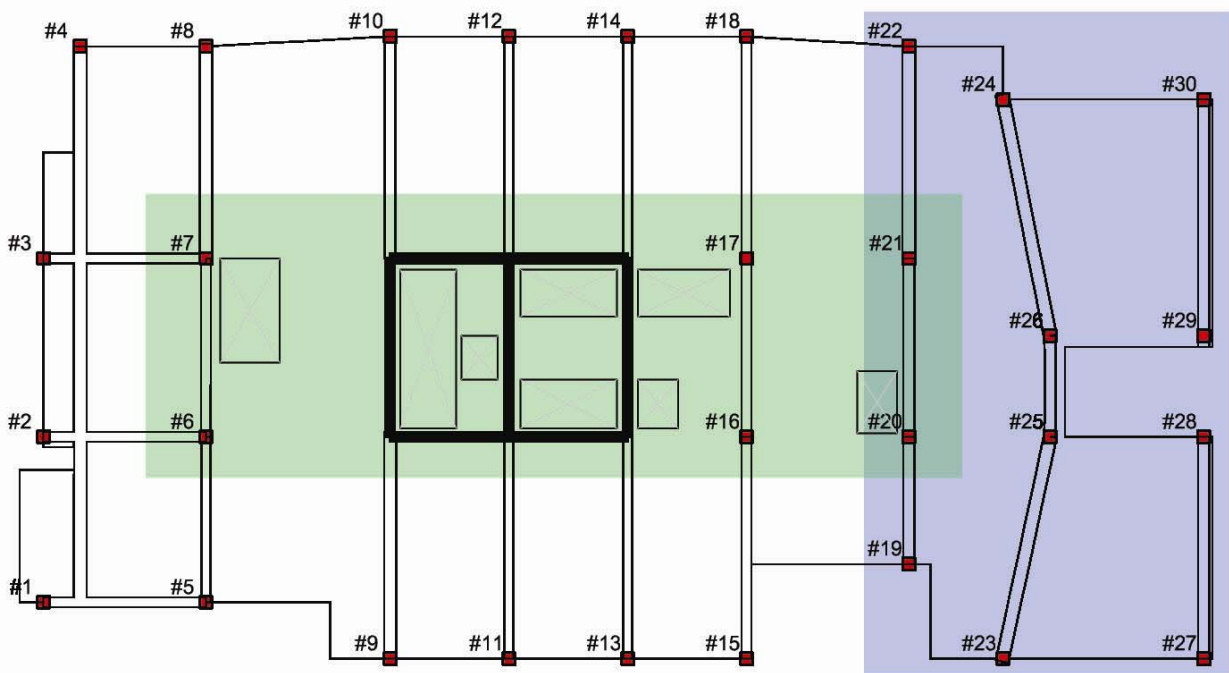
## STRUCTURAL SYSTEM REDESIGN FOR 1100 BROADWAY

### *Impact on Foundations*

To evaluate the impact of the redesign on the foundations, the required number of piles to support the new concrete structural system was compared to the number of piles used in the original design to support the steel system.

Floor loads to each column were determined using RAM Concept and totaled to give the load on each column at the foundation level. See Figure 39 for column numbers and locations.

**Figure 39:** Plan of lower level indicating column numbers and locations. The key system portion of the building is highlighted in blue and the mat foundation in green.



The original design utilized 110 ton, 14"-square, driven prestressed precast concrete piles. The load on each column was divided by the 110 ton capacity of the piles to determine the required number of piles to support each column load. This figure was compared with number of piles required to support the original steel columns and a percent increase in the number of piles necessary to support each column was determined. See Table 13 for a summary of the comparison. On average 33.4% more piles are required to support each column in the concrete system than those used in the original design of the steel system. Concrete systems are generally heavier than steel systems and it's expected that the foundations would need to be increased to be able to handle the higher loads.

## STRUCTURAL SYSTEM REDESIGN FOR 1100 BROADWAY

**Table 13:** Comparison of the number of piles required to support concrete system and original design

Column #	Ultimate load per floor to each column (k)				Total load on each column (k)	# of piles required to support column for concrete system	# of piles in original design	% Increase in piles required
	Level 2	Levels 3-8	Level 9	Levels 10-Roof				
1		88.1	66.6	68.2	1413.6	6	6	0.0%
2		161	151	133	2713	12	8	50.0%
3	91	158	158	156	3069	13	8	62.5%
4	112	84.9	84.2	79.3	1657.2	7	8	-12.5%
5		127	130	192	3196	13	8	62.5%
8	143	151	152	152	3025	13	14	-7.1%
9		134	136	137	2584	11	8	37.5%
10	118	148	150	148	2932	12	8	50.0%
11		116	115	115	2191	9	6	50.0%
12	107	113	111	114	2264	10	8	25.0%
13		111	111	113	2133	9	8	12.5%
14	102	115	114	115	2286	10	6	66.7%
15		87.4	87.4	109	1919.8	8	6	33.3%
18	111	131	131	133	2624	11	8	37.5%
19		111	120	88.5	1848	8		
22	81.4	118	115	91.4	2001.2	9		
23		156	188		1124	5		
24		198	236		1424	6		
25		217	252		1554	7		
26		193	191		1349	6		
27		107	123		765	4		
28		93.1	106		664.6	3		
29		109	122		776	4		
30		114	135		819	4		

Columns 19-30 support the Key System portion of the structure and not enough information is available from the original design to compare with the new concrete system

Average increase in # of piles required to support each column= 33.4%

The central area of the structure is supported on piles beneath a 5'-9" reinforced concrete mat foundation. The loads on the columns and shear walls that are supported by the mat foundation were totaled and divided by the 110 ton capacity of the piles to give a total of 145 piles required beneath the mat foundation. This figure was compared to the original design which consisted of 121 piles supporting the mat foundation yielding an approximate increase in the number of piles required to support the columns and shear walls above the mat foundation of 20%. See Table 14 below for a breakdown of the comparison.

**Table 14:** Comparison of the number of piles required beneath the mat foundation

Column #	Ultimate load per floor to each column (k)				Total load on each column (k)	Shear wall	Weight (k)
	Level 2	Levels 3-8	Level 9	Levels 10-Roof			
6	57.4	249	242	245	4733.4	3	1744.88
7	186	265	266	264	5210	4	1744.88
16		228	230	233	4394	5	1744.88
17	137	224	223	233	4500	B	2326.50
20	14.5	184	197	118	2731.5	C	2326.50
21	124	269	285	185	4243		

Total load to be supported by mat foundation (k) 35700

# Piles required under mat foundation for concrete system 145

# Piles supporting mat foundation for original design 121

Increase in # of piles required to support mat foundation 19.8%



## BREADTH STUDIES

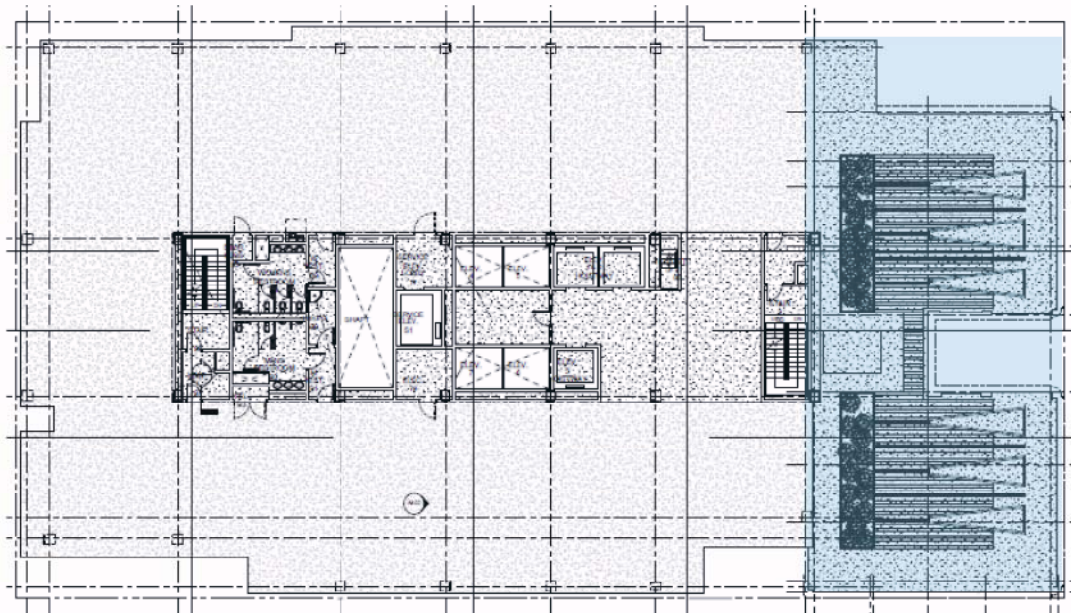
---

### *Introduction*

The geometry of 1100 Broadway's architecture provides the perfect opportunity to incorporate a green roof into its design. At the 9<sup>th</sup> level a large set back occurs where the Key System Building portion of 1100 Broadway terminates. The Key System Building was a 37,000 square foot historic office building which was damaged in the 1989 Loma Prieta earthquake and has remained vacant ever since. It is now a National Historic Landmark and its facade is incorporated into the design of the first eight floors of 1100 Broadway.

The original project is only in the design development phase but there are intentions to create a green roof at this level to help contribute to the sustainable goals of the building. Details on the existing green roof design are not available and therefore both breadth studies will focus on this portion of the design. See Figure 40 below.

**Figure 40:** Level 9 floor plan with focus area highlighted in blue



In pursuit of achieving a LEED Gold rating or higher, sustainability was a major focus in the design of 1100 Broadway. Green roofs provide many sustainable benefits such as rainwater retention from plant and soil absorption that would otherwise be directed to downspouts. They increase the thermal resistance of the roof system and prevent UV damage to the roofing membrane, ultimately increasing the longevity of the roof system. Green roofs also reduce the urban heat island effect but perhaps the largest benefit for the occupants is providing a habitable green space for lunch breaks and gatherings which would otherwise be an unused hard-surfaced area.

## BREADTH STUDIES

---

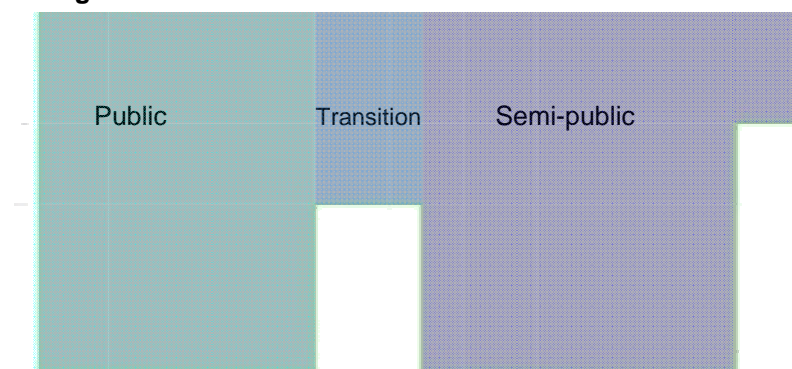
When the structural system was redesigned an allowance for the weight of the green roof was made. The allowance was based on an extensive green roof system but after studying the space it was determined that it was well suited for an intensive green roof system. An intensive system was also chosen for study because it provided more of a design challenge. Therefore it should be noted that the loads placed on the structure are significantly higher than those accounted for in the redesign due to a much larger soil depth and if the intensive system were to be installed the structure would have to be significantly upsized to handle the higher load demands.

### *Architectural Breadth*

The goal of the architectural breadth was to provide a space for occupants to relax and socialize and therefore an intensive green roof system has been designed. The intensive system functions more as a roof garden and requires constant maintenance. It was chosen over an extensive roof system which is typically composed of low growing sedum plants and is basically maintenance free. An extensive roof is also not intended to be occupiable space.

For the architectural breadth most of the focus was on the actual design of the plan and the plant selection. All plans were created in Adobe Photoshop. The space was divided into three zones public, transition, and semi-public. See Figure 41 below.

**Figure 41:** Zones



The completed plan can be seen in Figure 42 and a magnified view of each zone can be seen in Figures 43-45. The public zone features a large deck in the center to encourage socializing and gathering of coworkers during breaks. The transition zone acts as a buffer between the two spaces and contains terraced plant beds and an overhead trellis. The semi-public zone is a more personal space and offers areas with more privacy.

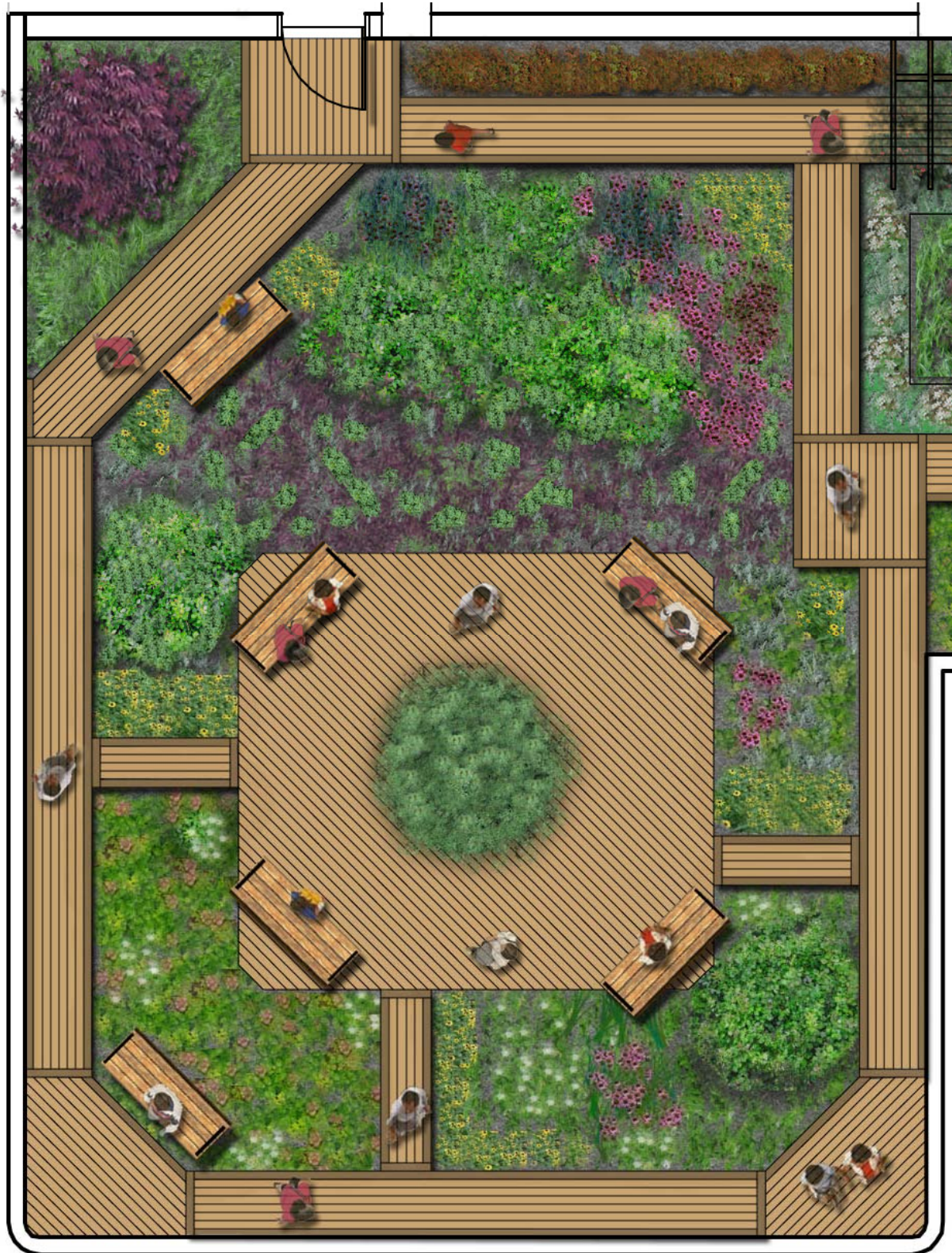
## BREADTH STUDIES

Figure 42: Completed plan



## BREADTH STUDIES

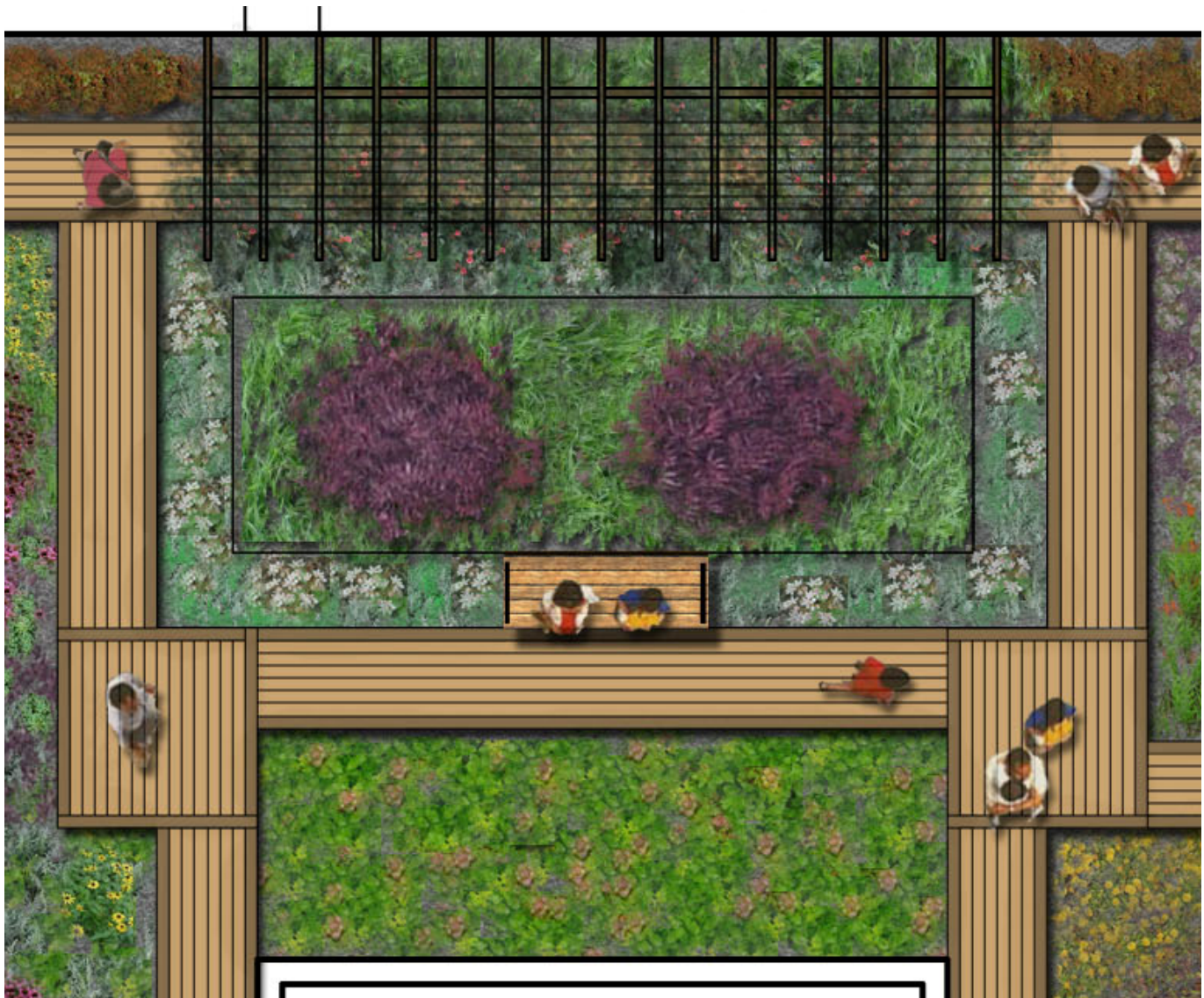
Figure 43: Enlarged view of the Public Zone



## BREADTH STUDIES

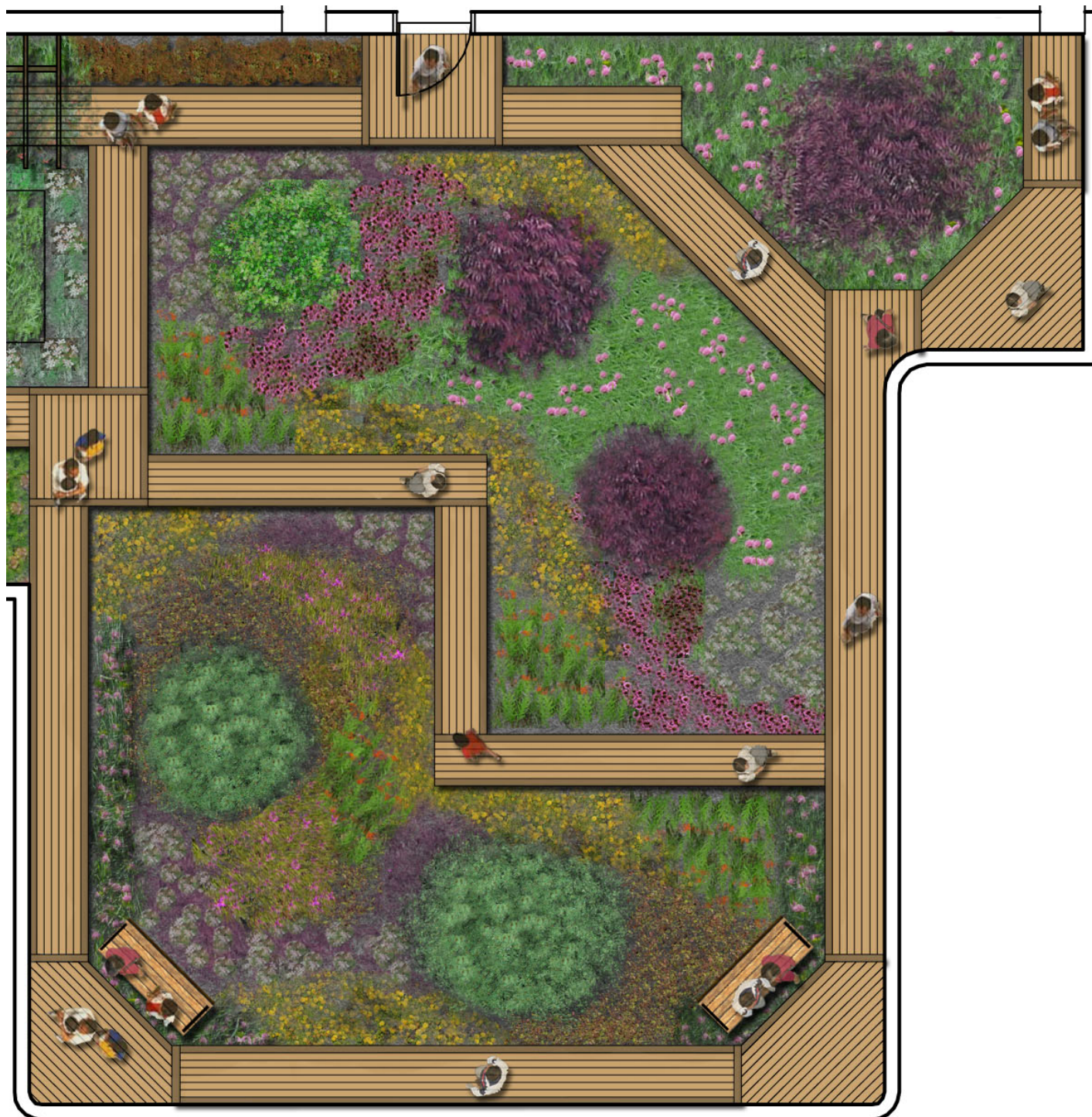
---

Figure 44: Enlarged view of the Transition Zone



## BREADTH STUDIES

Figure 44: Enlarged view of the Semi-Public Zone



## BREADTH STUDIES

---

### *Planting Plans*

Plants were specifically selected for the climate in Columbus, Ohio and plans are provided detailing plant species and location. Species not specifically called out in the planting plans are sedums and grasses including Virginia wild rye (*Elymus virginicus*), ice plant (*Delosperma nubigenum*), and kamtschaticum sedum (*Sedum kamtschaticum*). See Figures 46-49 for planting plans.

**Figure 46:** Planting Plan 1

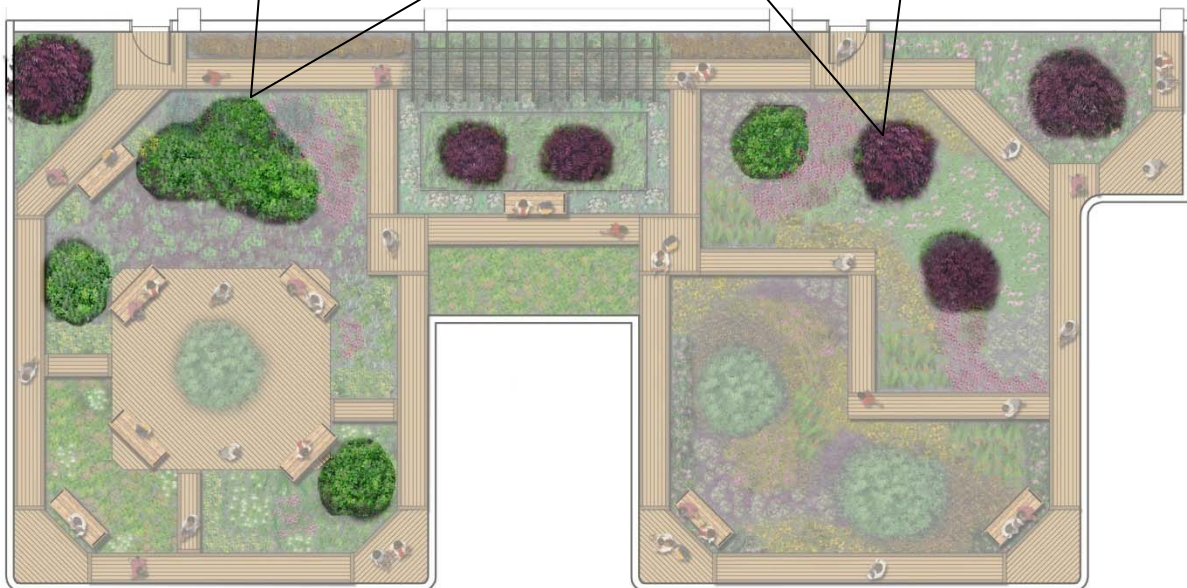
#### **Fragrant Sumac** (*Rhus aromatica*)

<http://www.pottedliners.com>



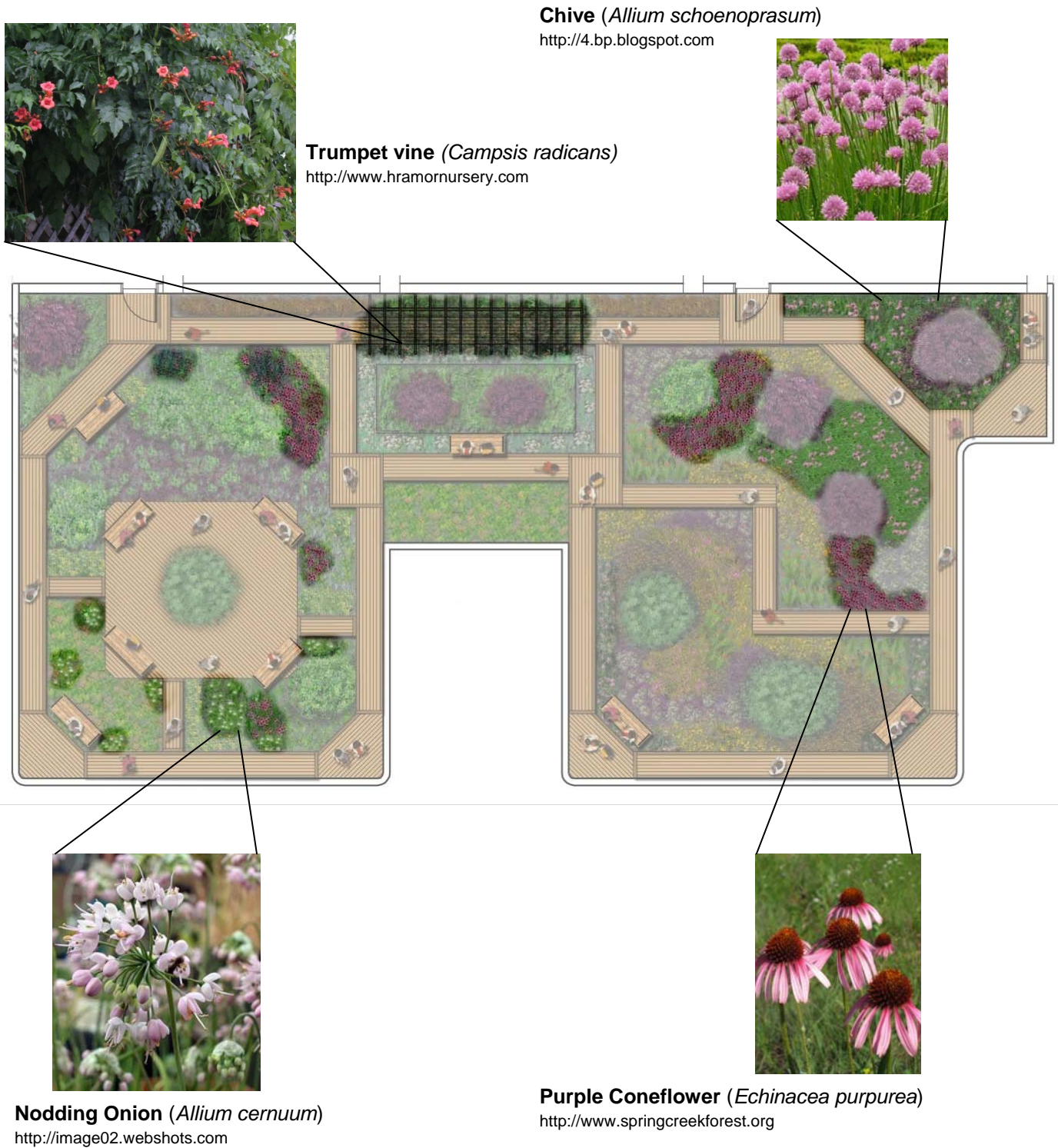
#### **Japanese Maple** (*Acer palmatum*)

image: <http://www.dirtdoctor.com>



## BREADTH STUDIES

Figure 47: Planting Plan 2





## BREADTH STUDIES

Figure 48: Planting Plan 3

**Black-eyed Susan (*Rubecula hirta*)**

<http://images.google.com>

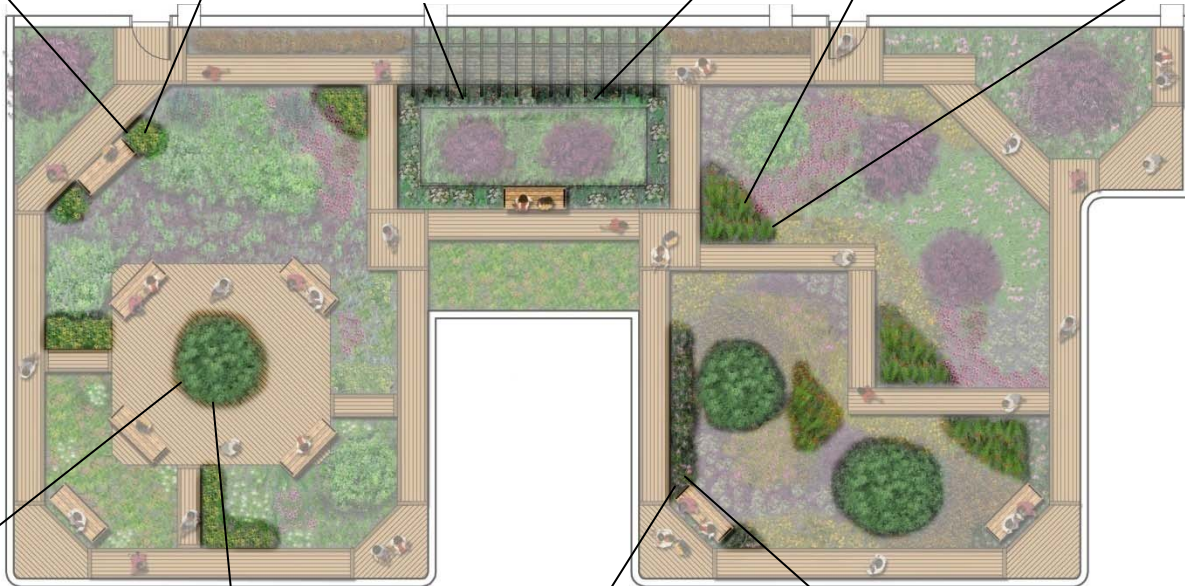


**Yarrow (*Achillea millefolium*)**

<http://media.photobucket.com>

**Butterfly Milkweed (*Asclepias tuberosa*)**

<http://www.wildflower.org>



**Fruitless Mulberry (*Morus alba*)**

<http://www.francescaowens.com>



**Wild Pink (*Silene carolinian*)**

<http://images.google.com>

## BREADTH STUDIES

Figure 49: Planting Plan 4

**Hens and chicks** (*Sempervivum tectorum*)

<http://www.panacheexteriordesign.com>



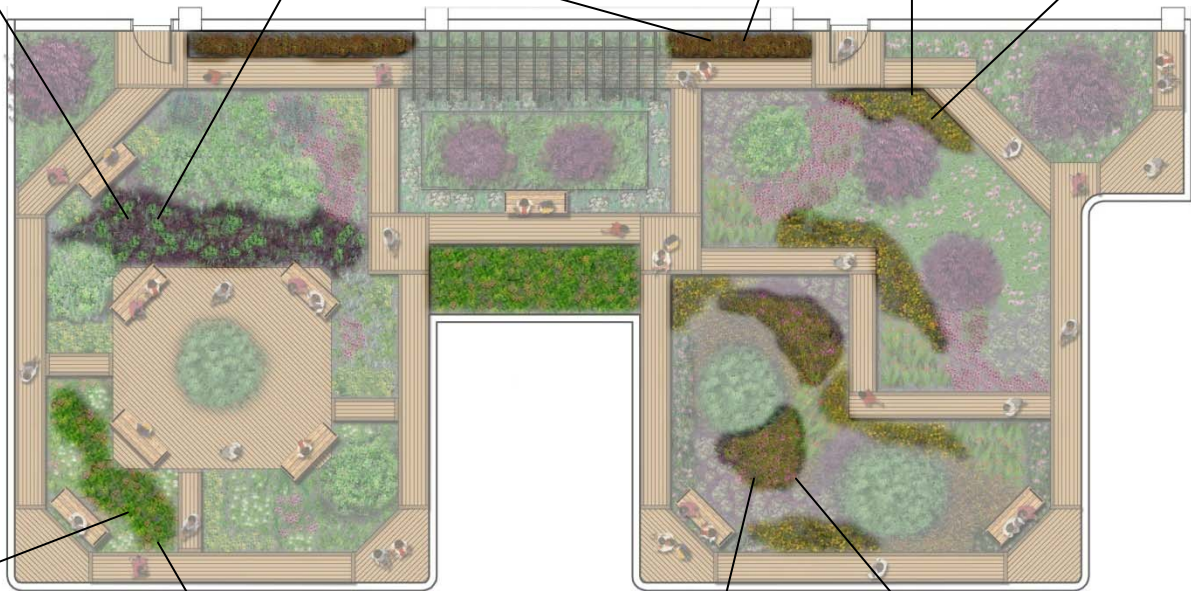
**Yellow ice plant** (*delosperma nubigenum*)

<http://www.francescaowens.com>



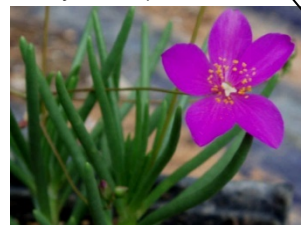
**Two-row stonecrop** (*Sedum spurium*)

<http://www.greencolanddesign.com>



**Fameflower** (*Talinum calycinum*)

<http://images.google.com>



**White Stonecrop** (*Sedum album*)

<http://www.overthebrink.com>



## BREADTH STUDIES

---

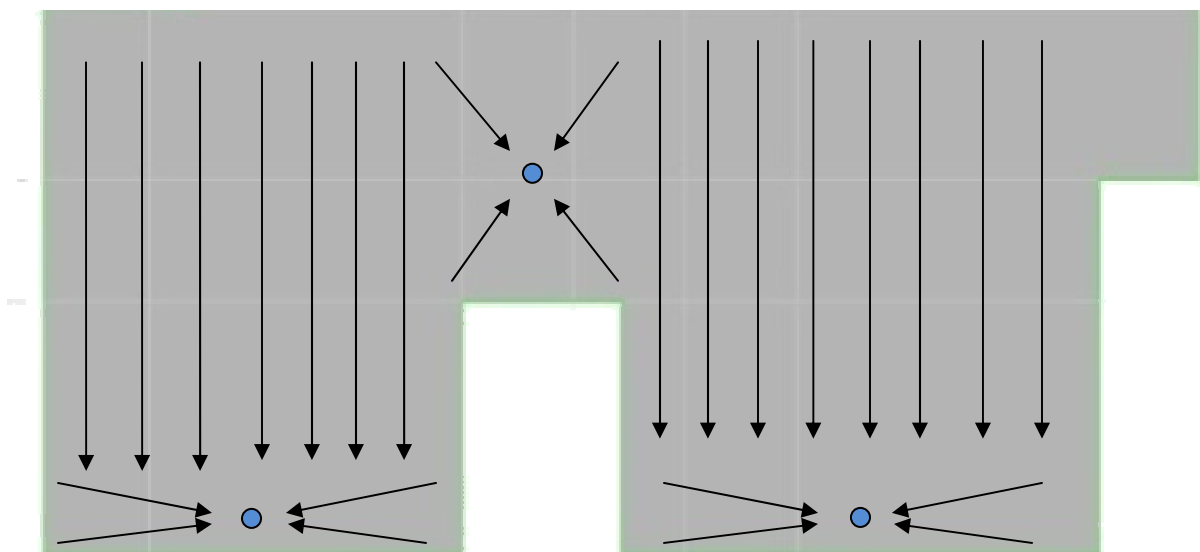
### ***Building Enclosure Breadth***

The goal of the building enclosure breadth was to integrate the green roof system with the building envelope and control the flow of heat and moisture between the interior and exterior of the building. Research was performed to determine the best roofing system and a system appropriate for 1100 Broadway was designed.

### *Drainage*

According to the 1997 Uniform Building Code, a minimum slope of 2% should be provided for drainage of weather-exposed areas. For good design practice this value should be doubled and therefore a 4% slope to all roof drains has been provided. This ensures that the 2% slope will be achieved after the system is constructed. Ideally drains should not be placed directly above structural supports. Deflections are largest at midspan and therefore if possible drains should be placed accordingly. Water on the roof was directed towards the exterior of the building. See Figure 50 below for a drainage slope plan.

**Figure 50:** Sloping plan to drains



## BREADTH STUDIES

---

### *Waterproofing*

An Inverted Roof Membrane Assembly (IRMA) was chosen for the roofing system. In this type of assembly the insulation layer is placed above the waterproofing membrane rather than typical roof systems which place the insulation below the waterproofing membrane. The insulation offers some protection for the membrane from damage during construction and exposure to corrosive elements. The first layer on the roof is perhaps the most critical layer. It acts as the last line of defense against moisture trying to enter the interior. The first layer of the roof system was built up using layers of fabric and hot rubberized asphalt. This layer acts as the underlying waterproofing membrane.

### *Root barrier*

To keep plant roots from penetrating through the waterproofing membrane and causing perforations in the building envelope a root barrier should be the next layer in the roofing system. The root barrier should be placed on the rubberized asphalt layer while it is still warm to achieve a strong bond. The root barrier comes packaged as a roll and consists of more rubberized asphalt reinforced with polyester fibers and treated with a root-repelling agent. After the root barrier has been placed it's crucial that all seams are torch welded to prevent root penetration.

### *Insulation*

To reduce the amount of heat loss through the roof, insulation is the next required layer. The design features extruded polystyrene rigid insulation boards.

### *Aeration*

Standing water on a roof can be detrimental to its insulation capacity. To allow for any standing water to dry out an aeration layer is necessary. Therefore a 1/4" thick aeration and drain mat was laid on top of the rigid insulation. This essentially creates a 1/4" air space for drying out any water that may be contained in the insulation after a storm.

## BREADTH STUDIES

---

### *Water-retention and Drainage mat*

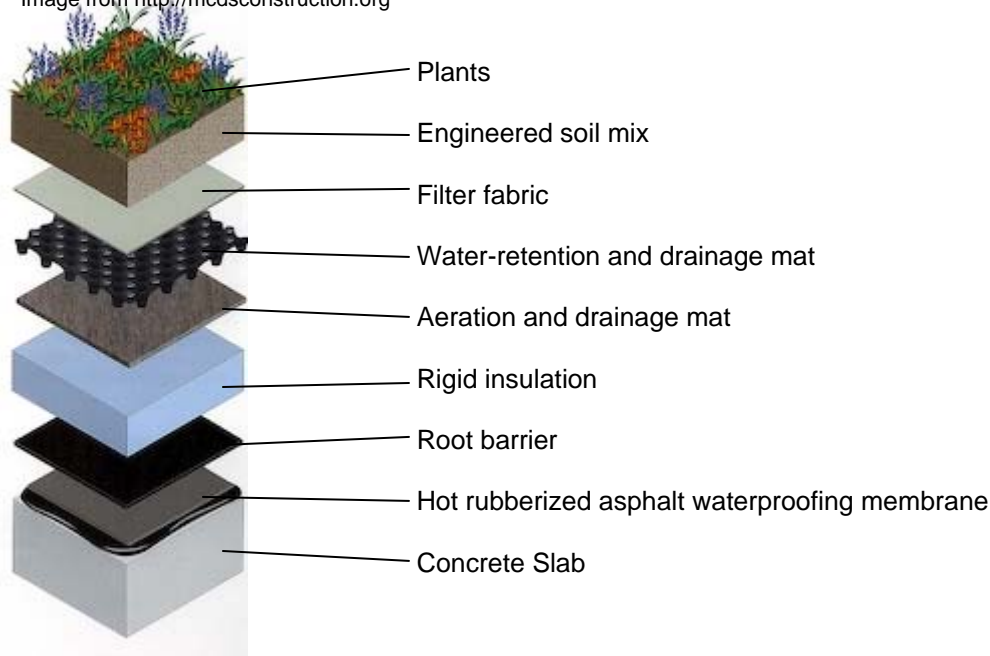
Although it's undesirable to have water standing on the insulation, one of the main advantages of a green roof is its ability to retain water and reduce storm water runoff. Water retention can be very beneficial as long as it's not contained in the insulation. Another mat containing egg shaped voids was overlaid on the aeration mat with the function of retaining water for the plants. The mat is 2.5" thick and is filled with expanded shale and acts as a reservoir to hydrate the above plants.

### *Filter Fabric*

Filter fabric is the last synthetic layer of the roofing system. It is permeable and allows for root penetration into the water retention and drainage mat below. The filter fabric is then topped with an engineered soil mix. Typically the mix consists of 75-80% inorganic matter, which includes expanded slate and crushed clay, and 20-25% organic matter, which includes humus and topsoil. See Figure 51 below for a section view of the roof system.

**Figure 51:** Roof section

Image from <http://mcdsconstruction.org>



## **SUMMARY & CONCLUSION**

---

For the redesign of the gravity system the goal of reducing the total floor system depth was achieved. The redesign resulted in an 8.25" reduction in depth in most areas. Once the gravity and lateral system were designed it was determined that the foundations needed increased on average by 19-33%. When the design was complete and compared with the original steel design the weight of the structure increased significantly from 32,950 kips to 49,720 kips. This increase would have been even higher if the concrete system was designed for the high seismic conditions in the original Oakland, California location. Although there was a reduction in the floor system depth, the increase in the building's weight would likely outweigh most economical advantages that a reduced floor system depth would yield and therefore it is probably not economically feasible to design 1100 Broadway as a one-way slab and post-tensioned beam system.

The goal of developing a greater understanding for post-tensioned design was achieved throughout the project. The biggest challenge was knowing what variable to change, such as beam width or depth and tendon drape at ends, midpoint, or over the supports, to obtain the most efficient design. After performing the one-way slab and post-tension beam design it would be interesting to see if a 2-way post-tensioned flat plate system would be a more feasible option for 1100 Broadway because some of the square bays created challenges during the design process.

When reviewing the breadth studies, instead of providing an allowance during the redesign of the structural system and designing the actual roof system after the structural system was designed it was obvious that the roof system should have been integrated into the design process early on and not just as an afterthought because it would have resulted in a significantly different structural design than what is currently in place for that portion of the building.

The building enclosure breadth provided the opportunity for a complete green roof design. Not only was an aesthetically pleasing design created during the architectural breadth but an intelligent building envelope design was achieved by designing a system to control the flow of both heat and moisture across the roofing envelope.

## Appendix: SLAB DESIGN

Table 1: Slab Reinforcing – Top Bars

Top Reinforcement:

=====

Units: Width (ft), Mmax (k-ft), Xmax (ft), As (in <sup>2</sup> ), Sp (in)									
Span	Zone	Width	Mmax	Xmax	AsMin	AsMax	SpReq	AsReq	Bars
1	Left	34.50	371.09	1.000	7.452	72.030	11.189	10.293	37-#5 *5
	Middle	34.50	0.00	13.665	0.000	72.030	0.000	0.000	---
	Right	34.50	665.49	26.330	7.452	72.030	6.088	18.798	68-#5
2	Left	34.50	741.92	1.000	7.452	72.030	6.088	21.061	68-#5
	Middle	34.50	0.00	15.500	0.000	72.030	0.000	0.000	---
	Right	34.50	651.93	30.000	7.452	72.030	6.900	18.400	60-#5
3	Left	34.50	403.05	1.000	7.452	72.030	6.900	11.201	60-#5
	Middle	34.50	16.62	7.300	7.452	72.030	16.560	0.452	25-#5
	Right	34.50	234.31	19.000	7.452	72.030	11.189	6.446	37-#5
4	Left	34.50	263.31	1.000	7.452	72.030	11.189	7.256	37-#5 *5
	Middle	34.50	0.00	10.000	0.000	72.030	0.000	0.000	---
	Right	34.50	272.33	19.000	7.452	72.030	11.189	7.509	37-#5 *5
5	Left	34.50	245.10	1.000	7.452	72.030	11.189	6.747	37-#5 *5
	Middle	34.50	0.00	10.000	0.000	72.030	0.000	0.000	---
	Right	34.50	358.81	19.000	7.452	72.030	8.809	9.945	47-#5 *5
6	Left	34.50	519.55	1.000	7.452	72.030	8.809	14.542	47-#5
	Middle	34.50	0.00	13.665	0.000	72.030	0.000	0.000	---
	Right	34.50	522.16	26.330	7.452	72.030	8.625	14.617	48-#5
7	Left	34.50	365.33	1.000	7.452	72.030	8.625	10.129	48-#5 *5
	Middle	34.50	0.00	10.475	0.000	72.030	0.000	0.000	---
	Right	34.50	311.03	19.950	7.452	72.030	6.923	8.596	39-#5 *5
8	Left	22.50	421.83	1.000	4.860	46.976	6.923	11.901	39-#5
	Middle	22.50	0.00	14.350	0.000	46.976	0.000	0.000	---
	Right	22.50	325.61	27.700	4.860	46.976	9.000	9.102	30-#5

NOTES:

\*5 - Number of bars governed by maximum allowable spacing.

Top Bar Details:

=====

Units: Length (ft)

Span	Left				Continuous		Right			
	Bars	Length	Bars	Length	Bars	Length	Bars	Length	Bars	Length
1	25-#5	9.36	12-#5	6.07	---	---	34-#5	9.42	34-#5	6.07
2	34-#5	10.57	34-#5	6.80	---	---	30-#5	10.57	30-#5	6.80
3	18-#5	6.94	17-#5	4.60	25-#5	20.00	12-#5	6.94	---	---
4	25-#5	6.94	12-#5	4.60	---	---	25-#5	6.94	12-#5	4.60
5	25-#5	6.94	12-#5	4.60	---	---	25-#5	8.37	22-#5	4.60
6	25-#5	9.36	22-#5	6.07	---	---	25-#5	9.36	23-#5	6.07
7	25-#5	8.42	23-#5	4.79	---	---	25-#5	7.42	14-#5	4.79
8	20-#5	9.81	19-#5	6.34	---	---	16-#5	9.81	14-#5	6.34

## Appendix: SLAB DESIGN

**Table 2: Slab Reinforcing – Bottom Bars**

Bottom Reinforcement:

=====

Units: Width (ft), Mmax (k-ft), Xmax (ft), As (in <sup>2</sup> ), Sp (in)									
Span	Width	Mmax	Xmax	AsMin	AsMax	SpReq	AsReq	Bars	
1	34.50	323.75	12.652	7.452	72.030	11.189	8.954	37-#5	*5
2	34.50	398.83	15.790	7.452	72.030	11.189	11.081	37-#5	*5
3	34.50	129.36	10.500	7.452	72.030	11.189	3.537	37-#5	*5
4	34.50	156.48	10.000	7.452	72.030	11.189	4.285	37-#5	*5
5	34.50	134.82	9.500	7.452	72.030	11.189	3.688	37-#5	*5
6	34.50	314.76	13.665	7.452	72.030	11.189	8.701	37-#5	*5
7	34.50	145.49	10.724	7.452	72.030	11.189	3.982	37-#5	*5
8	22.50	232.75	14.884	4.860	46.976	11.250	6.450	24-#5	*5

NOTES:

\*5 - Number of bars governed by maximum allowable spacing.

Bottom Bar Details:

=====

Units: Start (ft), Length (ft)

Span	Long Bars			Short Bars		
	Bars	Start	Length	Bars	Start	Length
1	25-#5	0.00	27.33	12-#5	8.68	7.73
2	25-#5	0.00	31.00	12-#5	10.02	11.56
3	25-#5	0.00	20.00	12-#5	9.50	2.00
4	25-#5	0.00	20.00	12-#5	9.00	2.00
5	25-#5	0.00	20.00	12-#5	8.50	2.00
6	25-#5	0.00	27.33	12-#5	10.11	7.10
7	25-#5	0.00	20.95	12-#5	9.72	2.00
8	16-#5	0.00	28.70	8-#5	9.94	9.89



## Appendix: SHEAR WALL DESIGN

**Table 3:** Determination of preliminary shear wall thicknesses to resist wind forces

Level	Story Force (K)		Total Shear (lbs)		Total shear/.75 (lbs.)		Required area in shear (in <sup>2</sup> )	
	E/W	N/S	E/W	N/S	E/W	N/S	E/W	N/S
Roof	32.21	16.26	32207	16262	42943	21683	185	93
20	64.00	32.28	96203	48541	128270	64722	552	279
19	63.97	32.27	160177	80808	213569	107744	919	464
18	63.97	32.27	224151	113075	298869	150767	1286	649
17	63.72	32.12	287876	145196	383835	193595	1652	833
16	61.52	30.84	349400	176032	465867	234710	2005	1010
15	61.00	30.53	410405	206565	547207	275420	2355	1185
14	60.58	30.28	470981	236847	627974	315796	2702	1359
13	59.38	29.58	530361	266432	707149	355242	3043	1529
12	58.78	29.24	589146	295667	785527	394223	3380	1696
11	58.16	28.87	647301	324536	863068	432715	3714	1862
10	56.70	28.02	704003	352556	938670	470075	4039	2023
9	56.00	27.61	759998	380164	1013330	506885	4361	2181
8	54.50	26.74	814502	406900	1086003	542534	4673	2335
7	53.25	26.00	867751	432904	1157002	577205	4979	2484
6	51.62	25.05	919373	457957	1225830	610609	5275	2628
5	50.11	24.17	969487	482130	1292650	642840	5563	2766
4	48.32	23.12	1017805	505254	1357074	673672	5840	2899
3	44.70	21.06	1062508	526314	1416677	701752	6096	3020
2	37.82	17.55	1100330	543866	1467107	725155	6313	3121
Ground	16.92	7.84	1117249	551706	1489665	735608	6410	3166

Level	Required area in shear per wall (in <sup>2</sup> )						Preliminary thickness (in)				
	33% to each wall E/W			50% to each wall N/S			E/W			N/S	
	Wall 3	Wall 4	Wall 5	Wall B	Wall C	Wall 3	Wall 4	Wall 5	Wall B	Wall C	
Roof	62	62	62	47	47	0.17	0.17	0.17	0.19	0.19	
20	184	184	184	139	139	0.51	0.51	0.51	0.58	0.58	
19	306	306	306	232	232	0.85	0.85	0.85	0.97	0.97	
18	428	428	428	324	324	1.19	1.19	1.19	1.35	1.35	
17	550	550	550	417	417	1.53	1.53	1.53	1.74	1.74	
16	668	668	668	505	505	1.85	1.85	1.85	2.10	2.10	
15	784	784	784	593	593	2.18	2.18	2.18	2.47	2.47	
14	900	900	900	679	679	2.50	2.50	2.50	2.83	2.83	
13	1013	1013	1013	764	764	2.81	2.81	2.81	3.18	3.18	
12	1126	1126	1126	848	848	3.13	3.13	3.13	3.53	3.53	
11	1237	1237	1237	931	931	3.44	3.44	3.44	3.88	3.88	
10	1345	1345	1345	1011	1011	3.74	3.74	3.74	4.21	4.21	
9	1452	1452	1452	1091	1091	4.03	4.03	4.03	4.54	4.54	
8	1556	1556	1556	1167	1167	4.32	4.32	4.32	4.86	4.86	
7	1658	1658	1658	1242	1242	4.61	4.61	4.61	5.17	5.17	
6	1757	1757	1757	1314	1314	4.88	4.88	4.88	5.47	5.47	
5	1852	1852	1852	1383	1383	5.15	5.15	5.15	5.76	5.76	
4	1945	1945	1945	1450	1450	5.40	5.40	5.40	6.04	6.04	
3	2030	2030	2030	1510	1510	5.64	5.64	5.64	6.29	6.29	
2	2102	2102	2102	1560	1560	5.84	5.84	5.84	6.50	6.50	
Ground	2135	2135	2135	1583	1583	5.93	5.93	5.93	<b>6.59</b>	<b>6.59</b>	

## Appendix: SHEAR WALL DESIGN

**Table 4:** Determination of preliminary shear wall thicknesses to resist seismic forces

Level	Story Force (K)	Total Shear (k)	Total Shear (lbs.)	Total Shear/6	Required area in shear (in <sup>2</sup> )	Required area in shear per wall (in <sup>2</sup> )					Preliminary thickness (in)				
						33% to each wall E/W			50% to each wall N/S		E/W			N/S	
						Wall 3	Wall 4	Wall 5	Wall B	Wall C	Wall 3	Wall 4	Wall 5	Wall B	Wall C
Roof	56.42	56.42	56423	94038	405	135	135	135	202	202	0.37	0.37	0.37	0.42	0.42
20	51.30	107.72	107719	179532	773	257	257	257	386	386	0.71	0.71	0.71	0.80	0.80
19	46.40	154.11	154114	256857	1105	368	368	368	553	553	1.02	1.02	1.02	1.15	1.15
18	41.72	195.83	195834	326391	1405	468	468	468	702	702	1.30	1.30	1.30	1.46	1.46
17	37.27	233.11	233108	388513	1672	557	557	557	836	836	1.55	1.55	1.55	1.74	1.74
16	33.06	266.17	266165	443609	1909	636	636	636	954	954	1.77	1.77	1.77	1.99	1.99
15	29.07	295.24	295240	492067	2118	705	705	705	1059	1059	1.96	1.96	1.96	2.21	2.21
14	25.33	320.57	320568	534279	2299	766	766	766	1150	1150	2.13	2.13	2.13	2.39	2.39
13	21.82	342.39	342386	570643	2456	818	818	818	1228	1228	2.27	2.27	2.27	2.56	2.56
12	18.55	360.94	360937	601561	2589	862	862	862	1294	1294	2.39	2.39	2.39	2.70	2.70
11	15.53	376.46	376464	627440	2700	899	899	899	1350	1350	2.50	2.50	2.50	2.81	2.81
10	12.75	389.22	389217	648694	2792	930	930	930	1396	1396	2.58	2.58	2.58	2.91	2.91
9	13.13	402.34	402342	670570	2886	961	961	961	1443	1443	2.67	2.67	2.67	3.01	3.01
8	10.32	412.66	412663	687771	2960	986	986	986	1480	1480	2.74	2.74	2.74	3.08	3.08
7	7.72	420.39	420387	700645	3015	1004	1004	1004	1508	1508	2.79	2.79	2.79	3.14	3.14
6	5.48	425.86	425864	709774	3054	1017	1017	1017	1527	1527	2.83	2.83	2.83	3.18	3.18
5	3.59	429.45	429453	715755	3080	1026	1026	1026	1540	1540	2.85	2.85	2.85	3.21	3.21
4	2.07	431.52	431524	719207	3095	1031	1031	1031	1547	1547	2.86	2.86	2.86	3.22	3.22
3	0.94	432.47	432469	720781	3102	1033	1033	1033	1551	1551	2.87	2.87	2.87	3.23	3.23
2	0.11	432.58	432579	720964	3103	1033	1033	1033	1551	1551	2.87	2.87	2.87	3.23	3.23

Sonja Hinish  
Structural Option  
1100 Broadway, Oakland, CA

April 7, 2009  
Advisor: Dr. Hanagan  
Final Report

## Appendix: SHEAR WALL DESIGN

Table 5: Design of Shear Wall Reinforcing

WALL B				WALL C					
thickness (h) (in)	18	Bar Size	Area	thickness (h) (in)	18	Bar Size	Area		
hw (in)	156	3	0.11	hw (in)	156	3	0.11		
lw (in)	480	4	0.20	lw (in)	480	4	0.20		
f'c (psi)	6000	5	0.31	f'c (psi)	6000	5	0.31		
fy (psi)	60000	6	0.44	fy (psi)	60000	6	0.44		
d (in)	384	7	0.60	d (in)	384	7	0.60		
		8	0.79			8	0.79		
<b>Max. permitted shear: <math>V_u &lt; \phi V_n</math></b>		Vu values from ETABS		<b>Max. permitted shear: <math>V_u &lt; \phi V_n</math></b>		Vu values from ETABS			
$\phi V_n$ (k)	4016	Level	Vu (k)	$\phi V_n$ (k)	4016	Level	Vu (k)		
		Roof	35.42			Roof	21		
		20	65.28			20	42.44		
<b>Shear Strength by Vc:</b>		19	93.51	<b>Shear Strength by Vc:</b>		19	60.6		
a=min of c	lw/2	18	119.15	a=min of c	lw/2	18	76.69		
	hw/2	17	142.09		hw/2	17	91.02		
a=	78	16	162.42	a=	78	16	103.75		
Vc (k)	1071	15	180.3	Vc (k)	1071	15	114.94		
or		14	195.88	or		14	124.69		
<b>Vc (k) 1767</b>		13	209.31	<b>Vc (k) 1767</b>		13	133.08		
or		12	220.76	or		12	147.41		
Vc (k)	-3503	11	230.39	Vc (k)	-3503	11	161.68		
		10	238.39			10	175.43		
		9	246.4			9	188.85		
<b>Required Horizontal Shear Reinforcing:</b>		8	252.94	<b>Required Horizontal Shear Reinforcing:</b>		8	201.61		
Is $V_u > 1/2 \phi V_c$	Vu	7	258.13	Is $V_u > 1/2 \phi V_c$	Vu	7	213.72		
	1/2 $\phi V_c$	6	262.04		1/2 $\phi V_c$	6	225.27		
	264	5	<b>263.77</b>		306	5	237.88		
	663	4	260.95			4	255.53		
No. Therefore, provide minimum reinforcement		3	237.79	No. Therefore, provide minimum reinforcement		3	<b>305.5</b>		
		2	249.3			2	294.56		
<b>Horizontal:</b>				<b>Horizontal:</b>					
smax=min of <	lw/5	96		smax=min of <	lw/5	96			
	3h	54			3h	54			
	or	18			or	18			
s,max=	18			s,max=	18				
pt,min=Av/(s*h)	0.0025			pt,min=Av/(s*h)	0.0025				
Av required	0.81			Av required	0.81				
Bar Size	# of Bars	s	Av	pt	Bar Size	# of Bars	s	Av	pt
3	2	4	0.22	0.003055556	3	2	4	0.22	0.003055556
4	2	6	0.4	0.003703704	4	2	6	0.4	0.003703704
<b>5</b>	<b>2</b>	<b>10</b>	<b>0.62</b>	<b>0.003444444</b>	<b>5</b>	<b>2</b>	<b>10</b>	<b>0.62</b>	<b>0.003444444</b>
<b>Vertical:</b>				<b>Vertical:</b>					
pl,min=max of <	0.00246458			pl,min=max of <	0.002464583				
	0.0025				0.0025				
pl	0.0025			pl	0.0025				
	160				160				
smax=min of <	54			smax=min of <	54				
	18				18				
s,max=	18			s,max=	18				
Av required	0.81			Av required	0.81				
Bar Size	# of Bars	s	Av	pt	Bar Size	# of Bars	s	Av	pt
3	2	4	0.22	0.003055556	3	2	4	0.22	0.003055556
4	2	6	0.4	0.003703704	4	2	6	0.4	0.003703704
<b>5</b>	<b>2</b>	<b>10</b>	<b>0.62</b>	<b>0.003444444</b>	<b>5</b>	<b>2</b>	<b>10</b>	<b>0.62</b>	<b>0.003444444</b>

## Appendix: SHEAR WALL DESIGN

Table 6: Design of Shear Wall Reinforcing

WALL 3					WALL 4				
thickness (h) (in)	18				thickness (h) (in)	18			
hw (in)	156				hw (in)	156			
lw (in)	360				lw (in)	360			
f'c (psi)	6000				f'c (psi)	6000			
fy (psi)	60000				fy (psi)	60000			
d (in)	288				d (in)	288			
		Bar Size	Area				Bar Size	Area	
		3	0.11				3	0.11	
		4	0.20				4	0.20	
		5	0.31				5	0.31	
		6	0.44				6	0.44	
		7	0.60				7	0.60	
		8	0.79				8	0.79	
<b>Max. permitted shear: <math>V_u &lt; \phi V_n</math></b>		Vu values from ETABS			<b>Max. permitted shear: <math>V_u &lt; \phi V_n</math></b>		Vu values from ETABS		
$\phi V_n$ (k)	3012	Level	Vu (k)		$\phi V_n$ (k)	3012	Level	Vu (k)	
		Roof	6.27				Roof	55.43	
		20	14.36				20	109.44	
		19	19.89				19	144.88	
<b>Shear Strength by Vc:</b>		18	24.45		<b>Shear Strength by Vc:</b>		18	187.23	
a=min of <	lw/2	17	38.18		a=min of <	lw/2	17	230.17	
	hw/2	16	51.3			hw/2	16	273.31	
a=	78	15	63.59		a=	78	15	316.91	
Vc (k)	803	14	75.43		Vc (k)	803	14	360.62	
or		13	86.83		or		13	403.81	
Vc (k)	1325	12	98.22		Vc (k)	1325	12	446.42	
or		11	109.66		or		11	488.52	
Vc (k)	-7288	10	120.43		Vc (k)	-7288	10	531.29	
		9	115.72				9	574.1	
		8	113.67				8	615.38	
<b>Required Horizontal Shear Reinforcing:</b>		7	114.91		<b>Required Horizontal Shear Reinforcing:</b>		7	651.69	
Is $V_u > 1/2 \phi V_c$	Vu	6	121.35		Is $V_u > 1/2 \phi V_c$	Vu	6	681.2	
	1/2 $\phi V_c$	5	135.07			1/2 $\phi V_c$	5	703.95	
No. Therefore, provide minimum reinforcement		4	152.27		Yes. Therefore, design according to 11.9.9, where $V_n = V_c + V_s$		4	721.61	
		3	248.85				3	675.21	
		2	190.64				2	683.03	
<b>Horizontal:</b>					<b>Horizontal:</b>				
smax=min of <	lw/5				Need $V_u < \phi(V_c + V_s)$				
	3h				Therefore	Vs=	-362.97		
	or							only min. reinforcing necessary	
s,max=	18								
pt,min=Av/(s*h)									
	0.0025								
Av required									
	0.81								
Bar Size	# of Bars	s	Av	pt					
3	2	4	0.22	0.003055556					
4	2	6	0.4	0.003703704					
5	2	10	0.62	0.003444444					
<b>Vertical:</b>									
pl,min=max of <	0.002413426								
	0.0025								
pl	0.0025								
	120								
smax=min of <	54								
	18								
s,max=	18								
Av required									
	0.81								
Bar Size	# of Bars	s	Av	pt					
3	2	4	0.22	0.003055556					
4	2	6	0.4	0.003703704					
5	2	10	0.62	0.003444444					
<b>Bar Size</b>	<b># of Bars</b>	<b>s</b>	<b>Av</b>	<b>pt</b>	<b>Bar Size</b>	<b># of Bars</b>	<b>s</b>	<b>Av</b>	<b>pt</b>
3	2	4	0.22	0.003055556	3	2	4	0.22	0.003055556
4	2	6	0.4	0.003703704	4	2	6	0.4	0.003703704
5	2	10	0.62	0.003444444	5	2	10	0.62	0.003444444

## Appendix: SHEAR WALL DESIGN

Table 7: Design of Shear Wall Reinforcing

WALL 5				
thickness (h) (in)	18			
hw (in)	156			
lw (in)	360			
f'c (psi)	6000			
fy (psi)	60000			
d (in)	288			
<b>Max. permitted shear: <math>V_u &lt; \phi V_n</math></b>				
$\phi V_n$ (k)	3012			
<b>Shear Strength by Vc:</b>				
a=min of <	lw/2	180		
	hw/2	78		
a=	78			
Vc (k)	803			
or				
Vc (k)	1325			
or				
Vc (k)	-7288			
<b>Required Horizontal Shear Reinforcing:</b>				
Is $V_u > 1/2 \phi V_c$	Vu	227		
	$1/2 \phi V_c$	497		
No. Therefore, provide minimum reinforcement				
<b>Horizontal:</b>				
smax=min of <	lw/5	72		
	3h	54		
	or	18		
s,max=	18			
pt,min=Av/(s*h)	0.0025			
Av required	0.81			
Bar Size	# of Bars	s	Av	pt
3	2	4	0.22	0.003055556
4	2	6	0.4	0.003703704
5	2	10	0.62	0.003444444
<b>Vertical:</b>				
pl,min=max of <	0.002413426			
	0.0025			
pl	0.0025			
smax=min of <	120			
	54			
	18			
s,max=	18			
Av required	0.81			
Bar Size	# of Bars	s	Av	pt
3	2	4	0.22	0.003055556
4	2	6	0.4	0.003703704
5	2	10	0.62	0.003444444

Bar Size	Area
3	0.11
4	0.20
5	0.31
6	0.44
7	0.60
8	0.79

Vu values from ETABS	
Level	Vu (k)
Roof	5.65
20	9.95
19	17.06
18	23.77
17	29.59
16	34.55
15	38.78
14	42.38
13	45.44
12	48.05
11	50.23
10	52.26
9	70.17
8	85.43
7	101.14
6	116.81
5	130.44
4	143.9
3	138.44
2	226.64

## Appendix: LATERAL ANALYSIS

**Table 8: Determination of wind pressures and story forces for Columbus, Ohio relocation**

ASCE 7-05: Table 6-2										
Exposure	$\alpha$	z <sub>g</sub> (ft)	a hat	b hat	$\alpha$ bar	b bar	c	l (ft)	$\epsilon$ bar	zmin (ft)*
B	7.0	1200	0.142857143	0.84	0.25	0.45	0.3	320	0.333333333	30

V	I	Kd	Kzt
90	1.0	0.85	1.0

Level	kz	qz	qh
Roof 257'-2"	1.29	22.81	22.81
250	1.28	22.56	22.81
200	1.20	21.15	22.81
180	1.17	20.62	22.81
160	1.13	19.92	22.81
140	1.09	19.21	22.81
120	1.04	18.33	22.81
100	0.99	17.45	22.81
90	0.96	16.92	22.81
80	0.93	16.39	22.81
70	0.89	15.69	22.81
60	0.85	14.98	22.81
50	0.81	14.28	22.81
40	0.76	13.40	22.81
30	0.70	12.34	22.81
25	0.66	11.63	22.81
20	0.62	10.93	22.81
0-15	0.57	10.05	22.81

East/West direction			
Flowchart 5.6			
B (ft)	202.5		
L (ft)	107.6666667		
h (ft)	257.1666667		
L/B	0.531687243		
h/L	2.388544892		
h/2	128.5833333		
$\beta$	0.02		
n1	0.77579519		
gQ/gv	3.4		
gR	4.128513508		
Zbar	154.3		
Izbar	0.231995338		
Lzbar	535.0987959		
Q	0.797455314		
Vbar Zbar	87.34729125		
N1	4.752603843		
Rn	0.05240025		
n for Rh	10.50679233		
Rh	0.090647241		
n for RB	8.273332912		
RB	0.113565461		
nfor RL	14.72650298		
RL	0.065599254		
R	0.122989595		
Gf	0.825025659		

Cp		
Windward Wall	Leeward Wall	
0.8	-0.5	

Level	pz (psf)		ph (psf)
	Windward	Leeward	
Roof 257'-2"	15.06		-9.41
250	14.89		-9.41
200	13.96		-9.41
180	13.61		-9.41
160	13.15		-9.41
140	12.68		-9.41
120	12.10		-9.41
100	11.52		-9.41
90	11.17		-9.41
80	10.82		-9.41
70	10.35		-9.41
60	9.89		-9.41
50	9.42		-9.41
40	8.84		-9.41
30	8.14		-9.41
25	7.68		-9.41
20	7.21		-9.41
0-15	6.63		-9.41

Ta=1/n1=	1.289
n1=	0.77579519

North/South direction			
Flowchart 5.6			
B (ft)	107.6666667		
L (ft)	202.5		
h (ft)	257.1666667		
L/B	1.880804954		
h/L	1.269958848		
h/2	128.5833333		
$\beta$	0.02		
n1	0.77579519		
gQ/gv	3.4		
gR	4.128513508		
Zbar	154.3		
Izbar	0.025430686		
Lzbar	535.0987959		
Q	0.817879061		
Vbar Zbar	87.34729125		
N1	4.752603843		
Rn	0.05240025		
n for Rh	10.50679233		
Rh	0.090647241		
n for RB	4.398825565		
RB	0.201497072		
nfor RL	27.69767975		
RL	0.035452354		
R	0.161742083		
Gf	0.906167321		

Cp		
Windward Wall	Leeward Wall	
0.8	-0.324	

Level	Height (ft)	Story Force (K)	
		E/W	N/S
Roof	257.17	32.21	16.26
20	244.17	64.00	32.28
19	231.17	63.97	32.27
18	218.17	63.97	32.27
17	205.17	63.72	32.12
16	192.17	61.52	30.84
15	179.17	61.00	30.53
14	166.17	60.58	30.28
13	153.17	59.38	29.58
12	140.17	58.78	29.24
11	127.17	58.16	28.87
10	114.17	56.70	28.02
9	101.17	56.00	27.61
8	88.17	54.50	26.74
7	75.17	53.25	26.00
6	62.17	51.62	25.05
5	49.17	50.11	24.17
4	36.17	48.32	23.12
3	23.17	44.70	21.06
2	10.42	37.82	17.55

**Appendix: LATERAL ANALYSIS**

**Table 9:** Determination of seismic loading, x-direction loading highlighted in blue, y-direction loading highlighted in orange.

Seismic Design Category: B Site Class: D	
I=	1.00
Ss=	0.148
S1=	0.059
Sms=	0.237
Sm1=	0.142
SDs=	0.158
SD1=	0.095
R=	5
Fa=	1.6
Fv=	2.4
Ta≈T	2.192
TL	12
Cs	0.0087
W	49721.67
V	433
k	1.846

T=	2.192	s
k=	1.846	
V <sub>b</sub> =	433	kips
Cs=	0.0087	
Cu=	1.7	

i	h <sub>i</sub>	h	w	w*h <sup>k</sup>	C <sub>vX</sub>	f <sub>i</sub>	V <sub>i</sub>	By	5%By	Ax	M <sub>z</sub>
	ft	ft	kips			kips	kips	ft	ft		k-ft
roof	13	258.5	2299.645	65307673	0.130	56	56	105	5	1.0	295
20	13	245.5	2299.645	59374234	0.119	51	108	105	5	1.0	268
19	13	232.5	2299.645	53700793	0.107	46	154	105	5	1.0	243
18	13	219.5	2299.645	48289541	0.096	42	196	105	5	1.0	218
17	13	206.5	2299.645	43142812	0.086	37	233	105	5	1.0	195
16	13	193.5	2299.645	38263109	0.076	33	266	105	5	1.0	173
15	13	180.5	2299.645	33653121	0.067	29	295	105	5	1.0	152
14	13	167.5	2299.645	29315756	0.059	25	321	105	5	1.0	133
13	13	154.5	2299.645	25254174	0.050	22	342	105	5	1.0	114
12	13	141.5	2299.645	21471834	0.043	19	361	105	5	1.0	97
11	13	128.5	2299.645	17972547	0.036	16	376	105	5	1.0	81
10	13	115.5	2299.645	14760556	0.029	13	389	105	5	1.0	67
9	13	102.5	2950.64	15192532	0.030	13	402	105	5	1.0	69
8	13	89.5	2980.021	11945511	0.024	10	413	105	5	1.0	54
7	13	76.5	2980.021	8940900	0.018	8	420	105	5	1.0	40
6	13	63.5	2980.021	6339658	0.013	5	426	105	5	1.0	29
5	13	50.5	2980.021	4153608	0.008	4	429	105	5	1.0	19
4	13	37.5	2980.021	2397820	0.005	2	432	105	5	1.0	11
3	12.5	24.5	2980.021	1092856	0.002	1	432	105	5	1.0	5
2	12	12	1295.163	127189	0.000	0	433	105	5	1.0	1
		Σ									
			49721.669	500696223		433					2264
i	h <sub>i</sub>	η	w	w*hk	CVX	f <sub>i</sub>	V <sub>i</sub>	Bx	5%Bx	Ax	M <sub>z</sub>
	ft	φτ	kips			kips	kips	ft	ft		k-ft
roof	13	258.5	2299.645	65307673	0.130	56	56	195	10	1.0	550
20	13	245.5	2299.645	59374234	0.119	51	108	195	10	1.0	500
19	13	232.5	2299.645	53700793	0.107	46	154	195	10	1.0	452
18	13	219.5	2299.645	48289541	0.096	42	196	195	10	1.0	407
17	13	206.5	2299.645	43142812	0.086	37	233	195	10	1.0	363
16	13	193.5	2299.645	38263109	0.076	33	266	195	10	1.0	322
15	13	180.5	2299.645	33653121	0.067	29	295	195	10	1.0	283
14	13	167.5	2299.645	29315756	0.059	25	321	195	10	1.0	247
13	13	154.5	2299.645	25254174	0.050	22	342	195	10	1.0	213
12	13	141.5	2299.645	21471834	0.043	19	361	195	10	1.0	181
11	13	128.5	2299.645	17972547	0.036	16	376	195	10	1.0	151
10	13	115.5	2299.645	14760556	0.029	13	389	195	10	1.0	124
9	13	102.5	2950.64	15192532	0.030	13	402	195	10	1.0	128
8	13	89.5	2980.021	11945511	0.024	10	413	195	10	1.0	101
7	13	76.5	2980.021	8940900	0.018	8	420	195	10	1.0	75
6	13	63.5	2980.021	6339658	0.013	5	426	195	10	1.0	53
5	13	50.5	2980.021	4153608	0.008	4	429	195	10	1.0	35
4	13	37.5	2980.021	2397820	0.005	2	432	195	10	1.0	20
3	12.5	24.5	2980.021	1092856	0.002	1	432	195	10	1.0	9
2	12	12	1295.163	127189	0.000	0	433	195	10	1.0	1
		Σ	49721.669	500696223		433					4218