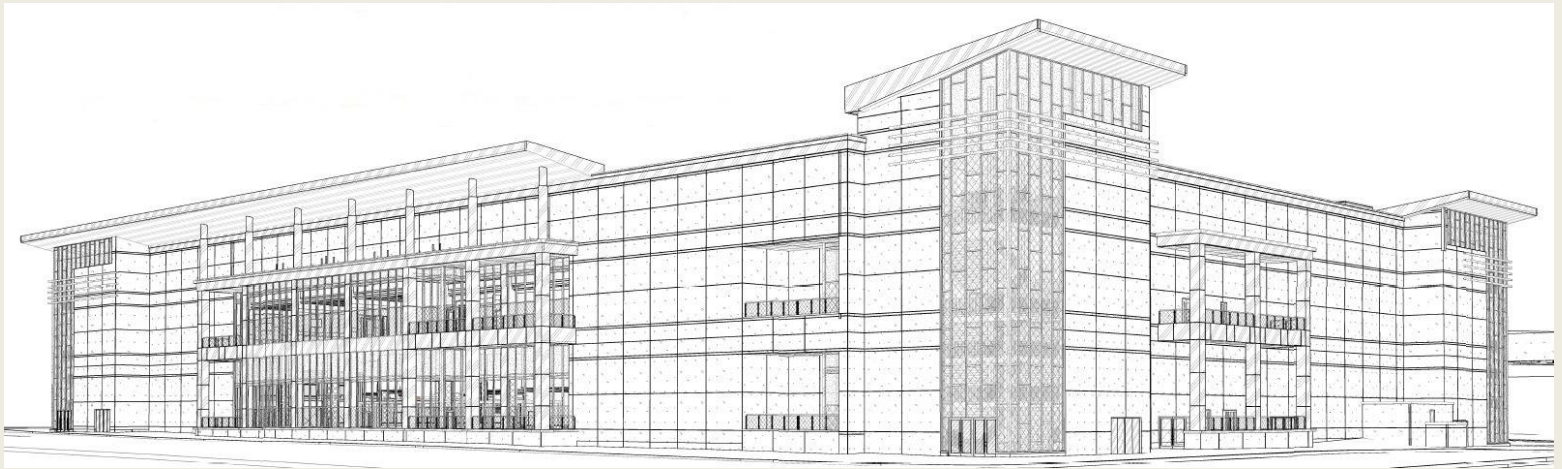


Casino Gold | East Coast, USA

Brad Robertson | Lighting + Electrical

<http://www.engr.psu.edu/ae/thesis/portfolios/2014/jbr5104/index.html>



The Team

Executive Architect: ka

Design/Interiors Architect: Friedmutter Group

Construction Manager: Whiting-Turner

Structural Engineer: Carroll Engineering, Inc.

MEPT Engineer: JBA Consulting Engineers

Lighting Design: The Lighting Practice

The Building

Occupancy Type: A2 Assembly, B, S1

Type of Construction: Type 1B sprinklered, Noncombustible

Size: 309,450 GSF

Levels Above Grade/Total Levels: 3/3

Approximate Cost: \$400 Million

Dates of Construction: June 2013-September 2014



Casino Entrance at Night



Active Outdoor Plaza

The Systems

Lighting: The lighting in Casino Gold is a mix of pendant, recessed, and strip luminaires. The majority of sources are LED and there are multiple custom chandeliers.

Mechanical: A 15,000 sq. ft. central plant adjacent to the building houses the casino's hydronic systems. Rooftop air handling units and exhaust fans service the casino. Due to the nature of the building, special attention is paid to the smoke control system.

Structural: This is a steel structure with metal framed walls and architectural concrete covering the exterior.

Electrical: 480/277V service begins in the Central Plant with Utility Owned transformers. The service is distributed throughout the casino using both 480/277V and 120/208V panels located in defined electrical rooms.

*All images belong to Friedmutter Group and design team