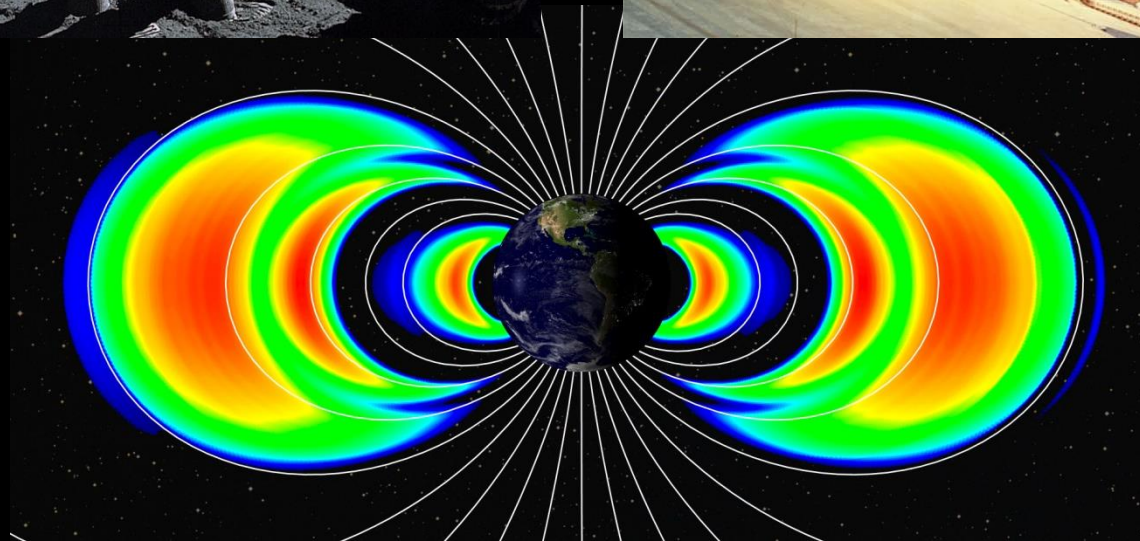
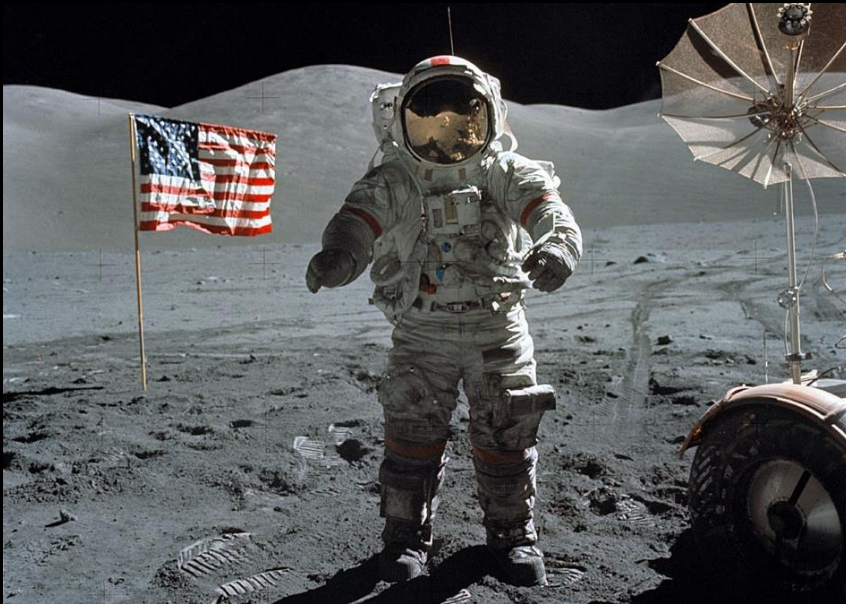


Tech Report 3 – Schematic Design
Cypress Hill Elementary School
Nicholas Stuchlak
November 11, 2013

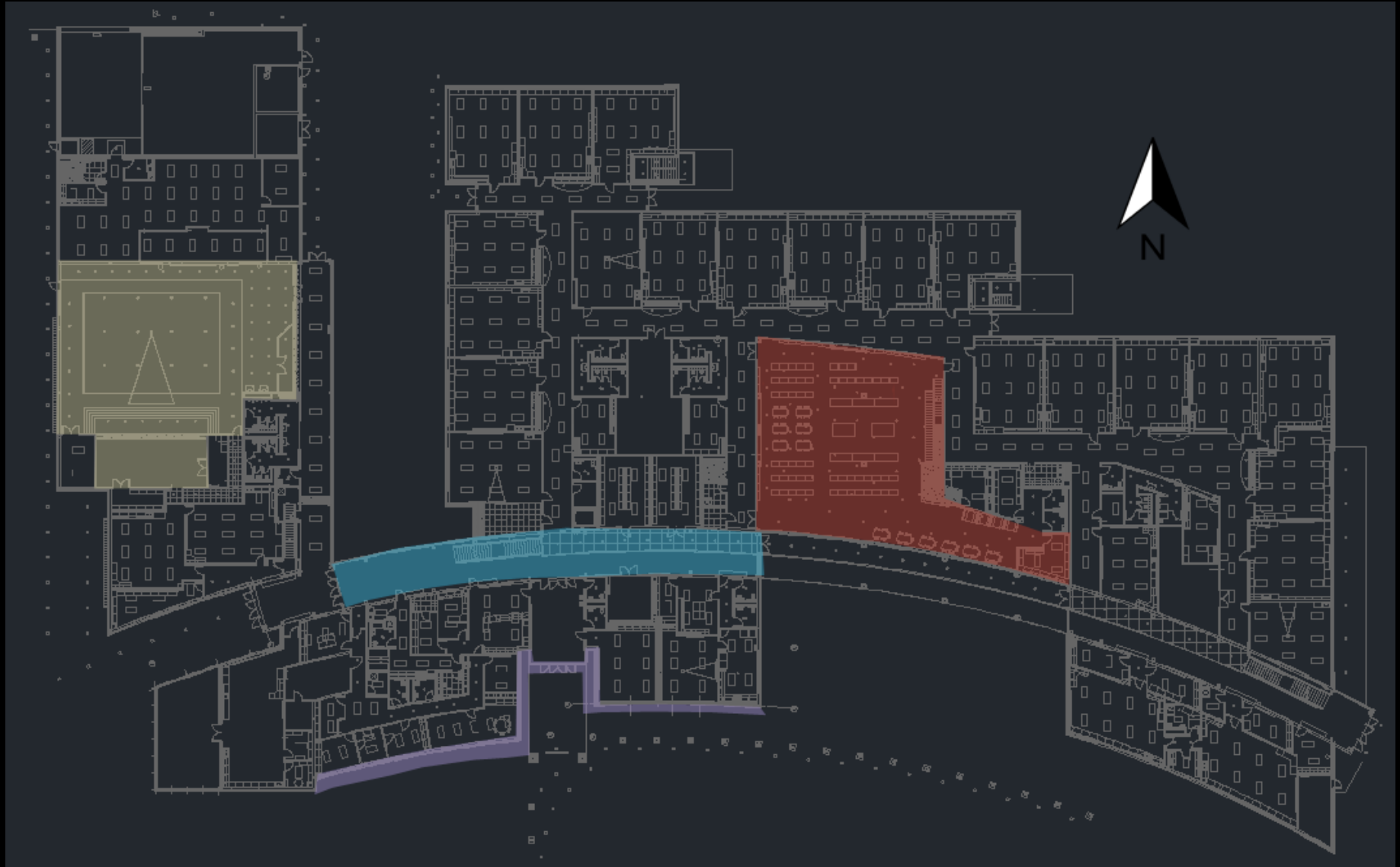
Building Statistics

- 105,529 SF New Construction
- 9,000 SF Existing Gymnasium
- Two floors
- Includes various classrooms, gymnasium, cafeteria/performance space, offices, and media center/library.

Man and the Moon

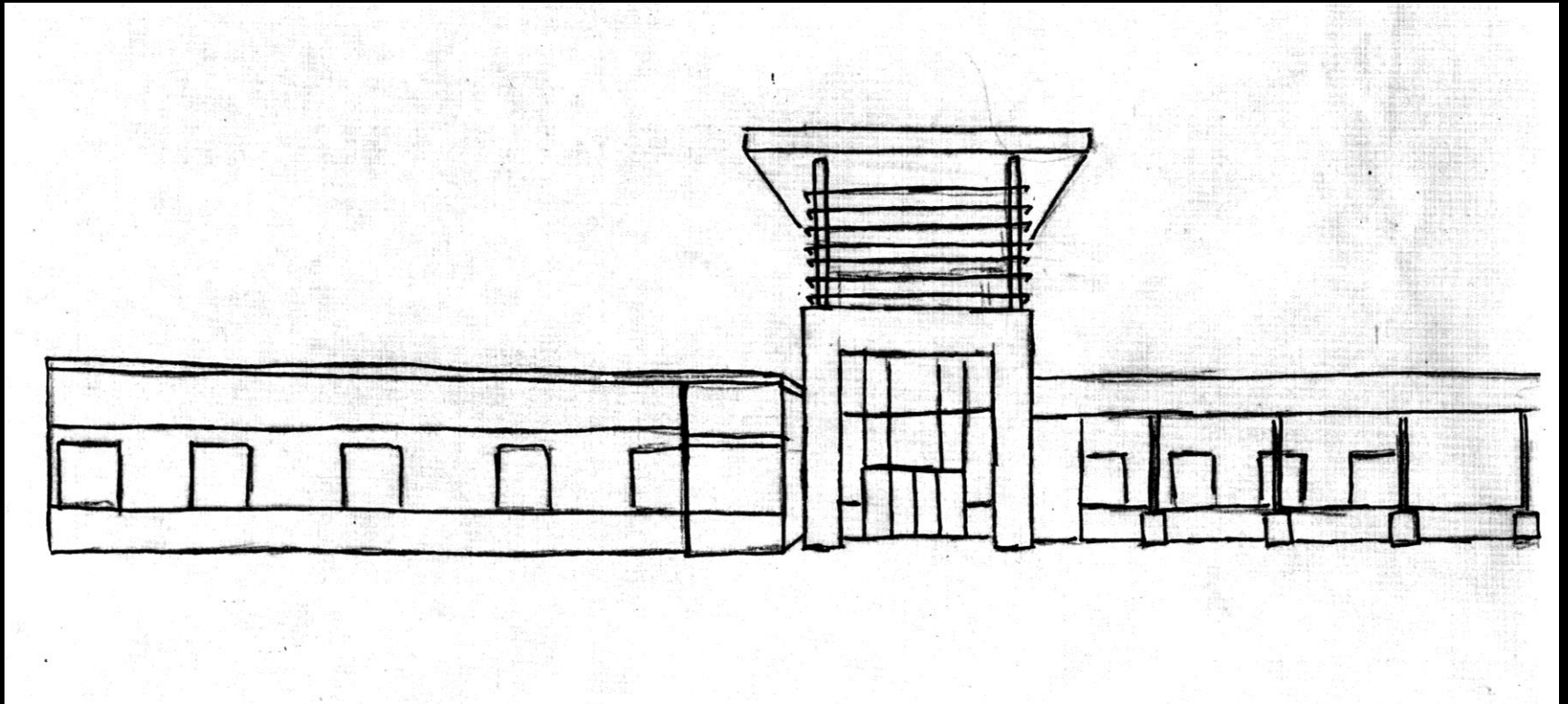


Plan and Spaces



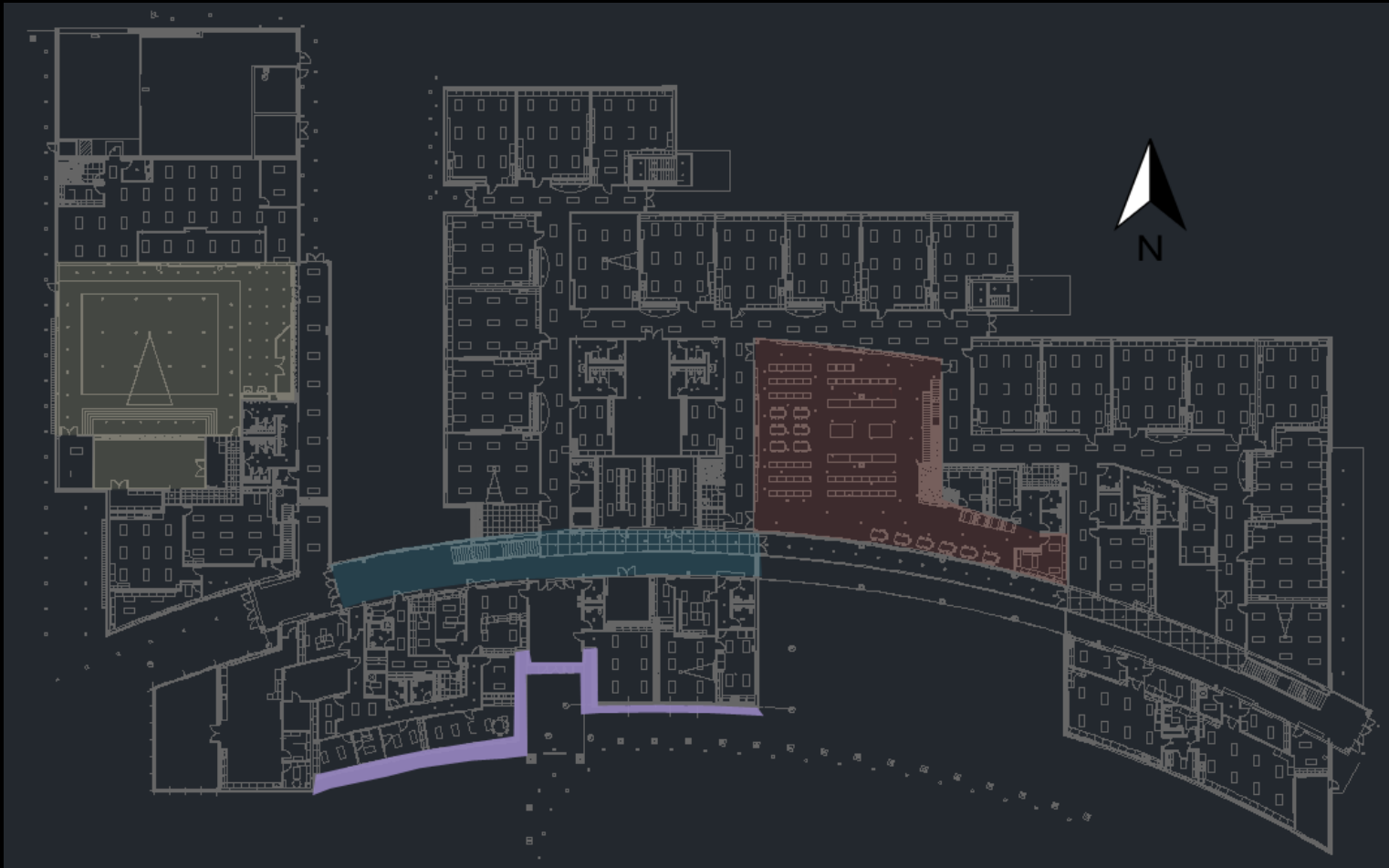
Façade – 3 Schematic Designs, Circulation Space, Work Space,
Special Purpose Space – 2 Psychological Impressions

Facade

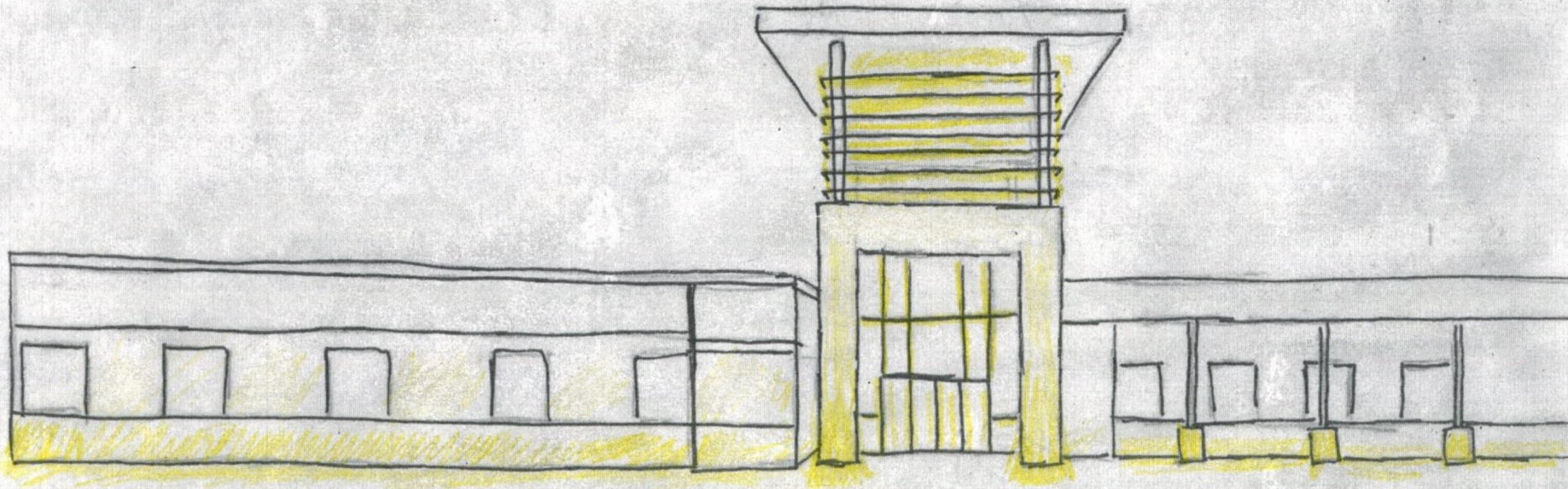


- Design Criteria
- 3 Different Designs

Facade



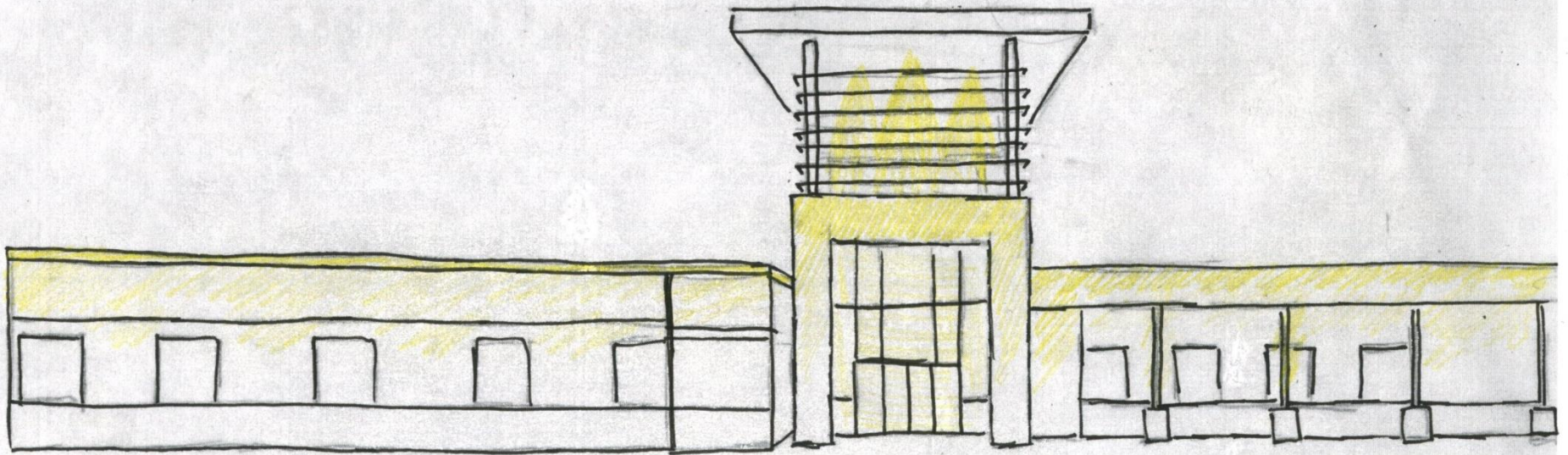
Façade 1



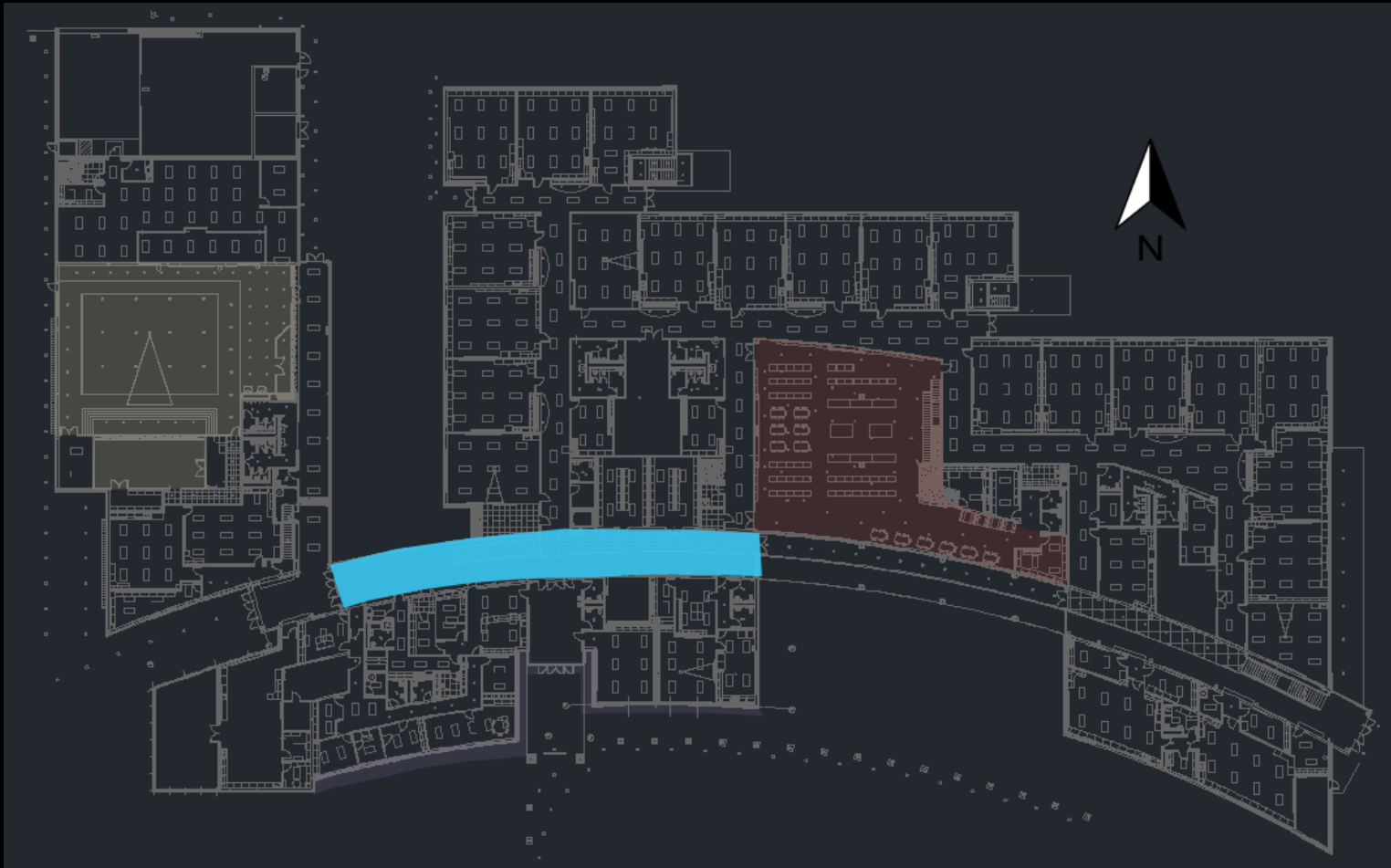
Façade 2



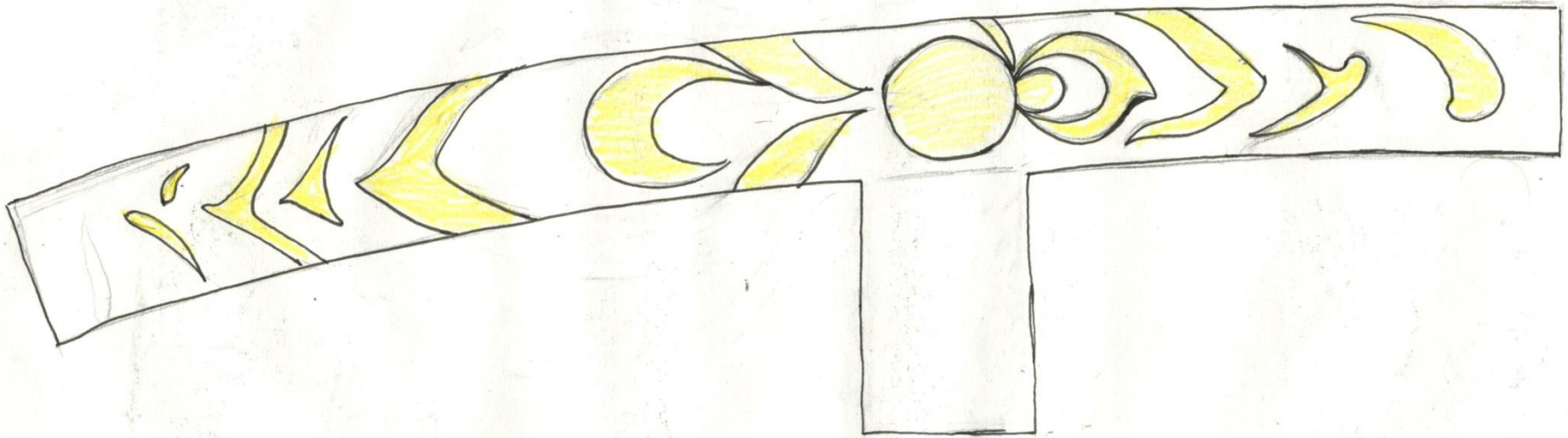
Façade 3



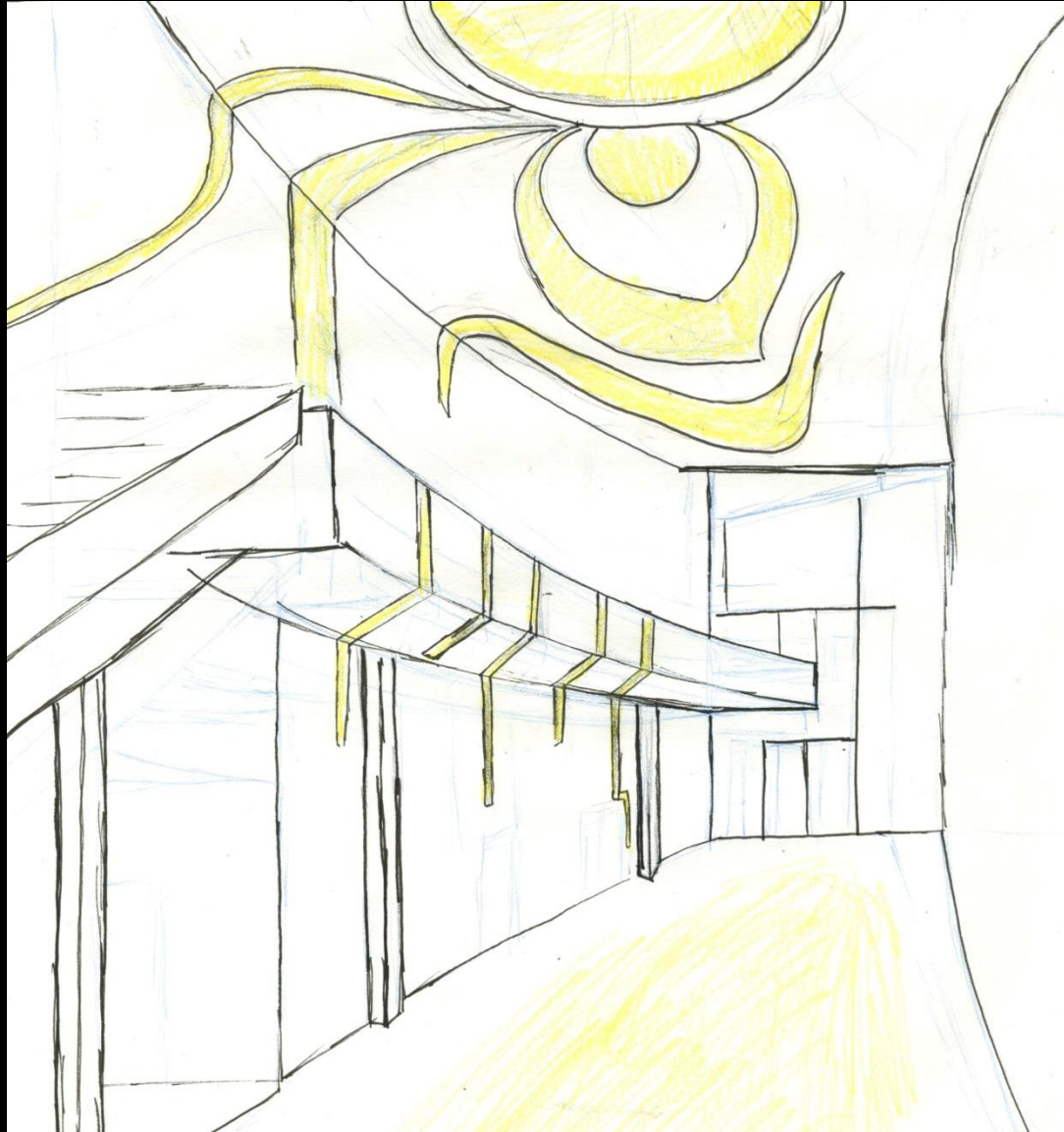
Circulation Space



Circulation Space



Circulation Space



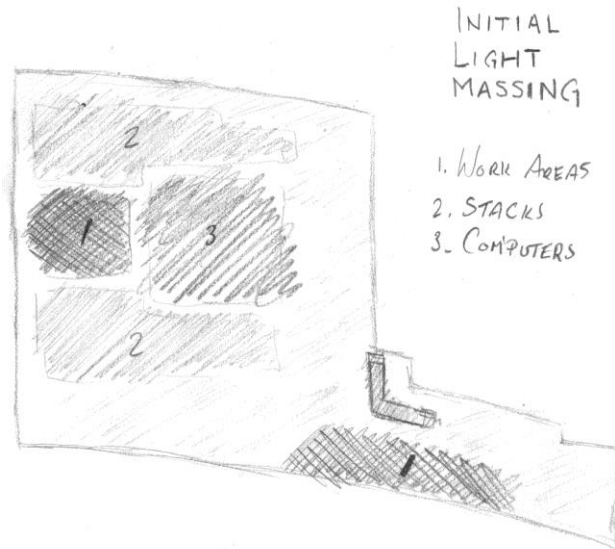
Circulation Space



Work Space



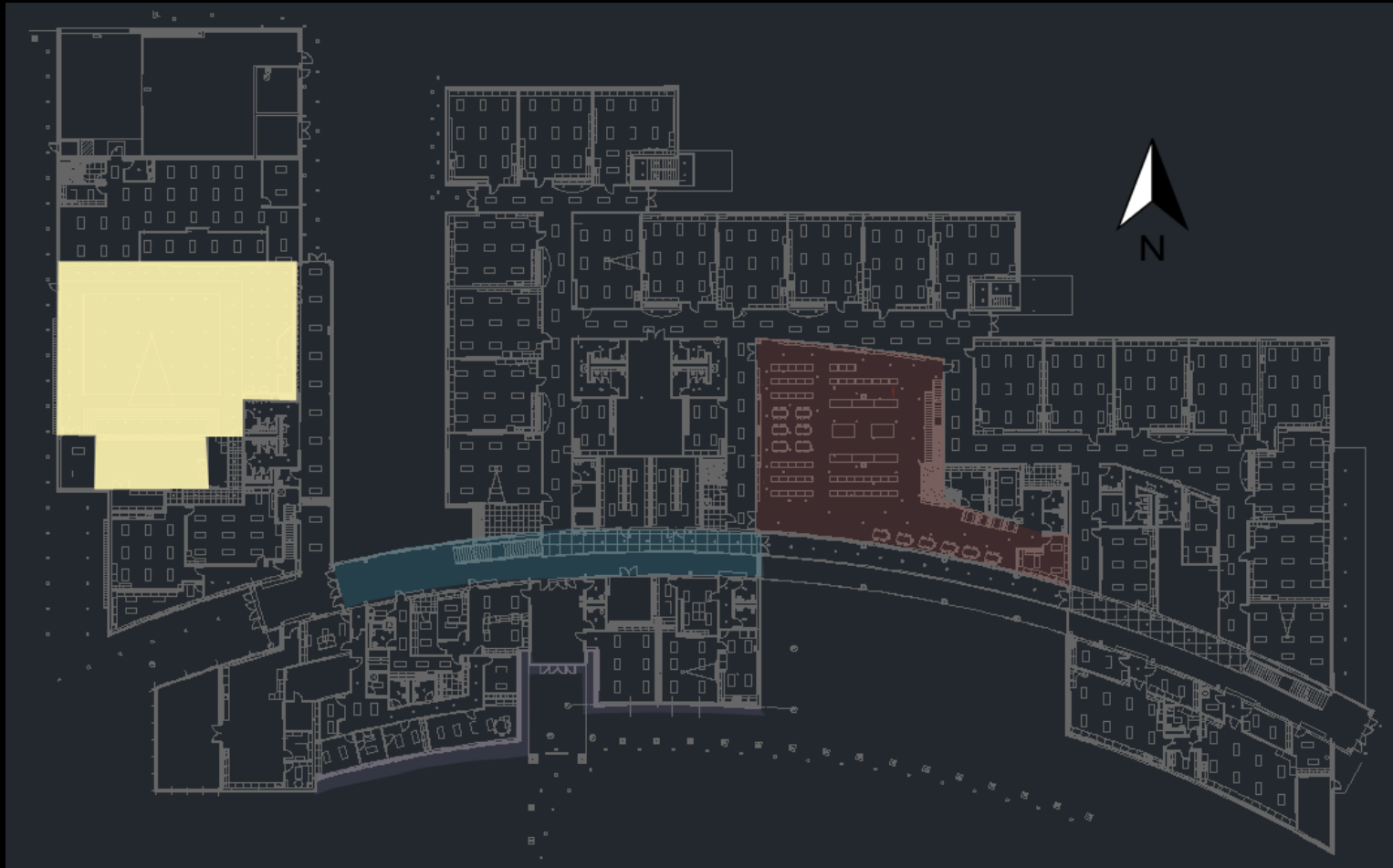
Work Space



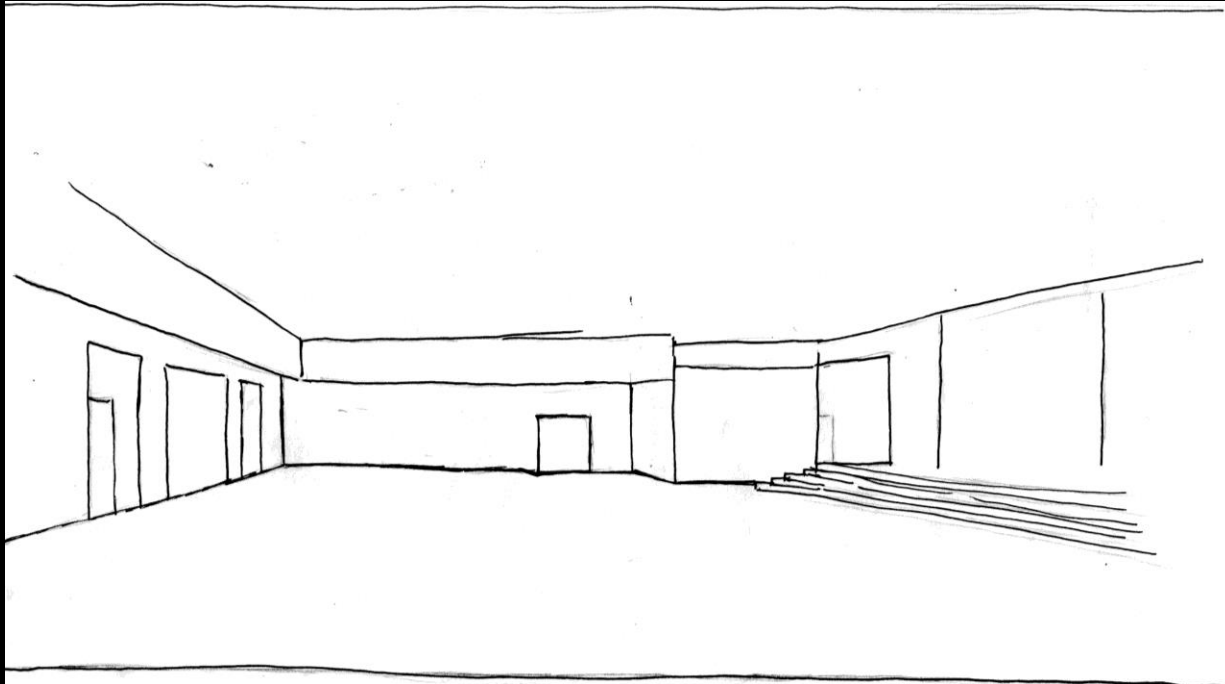
Work Space



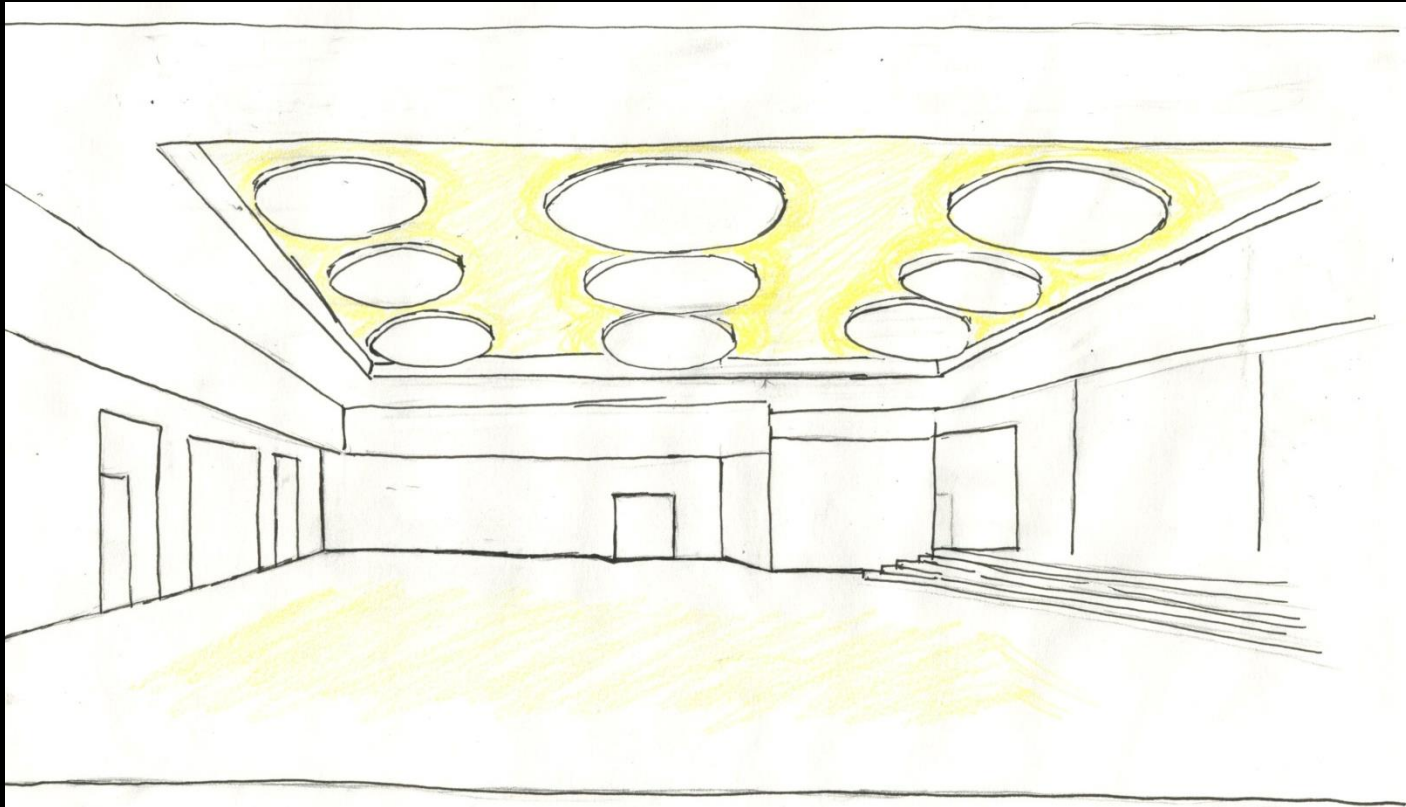
Special Purpose Space



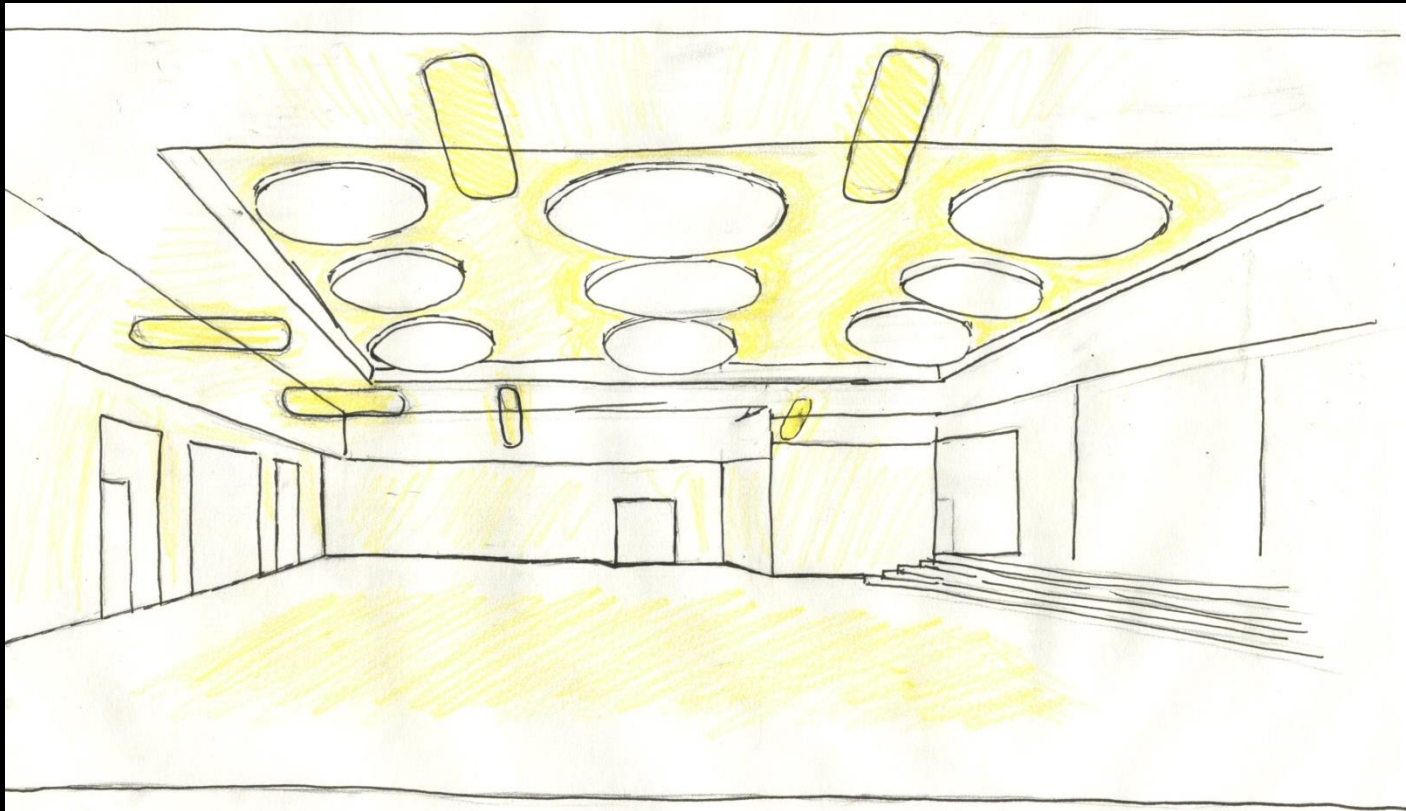
Special Purpose Space



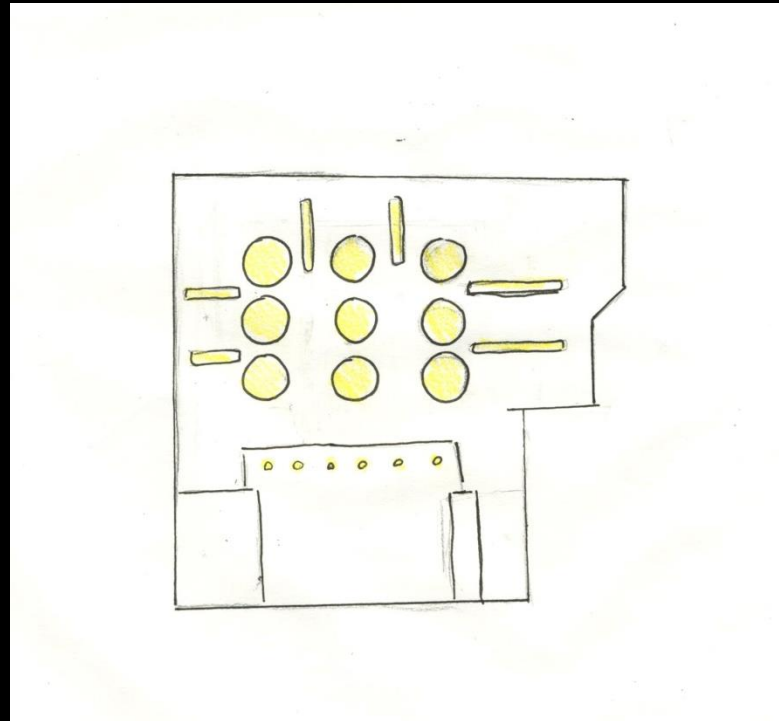
Special Purpose Space



Special Purpose Space



Special Purpose Space



References

- <http://www.itsbeach.com/.a/6a00d83451c1af69e20120a5f406a8970c-800wi>
- http://images.wikia.com/theamazingworldofgumball/images/9/99/Last_Moon_Walk_Apollo_17_640x480.jpg
- <http://jhuapl.edu/newscenter/pressreleases/2013/images/VanAllenProbesnewbeltLRG.jpg>