

Hughes Borehole Pictorial – Natural low-pH Fe(II) Oxidation

Portage, Pennsylvania
October 2006 – May 2008

October 2006



10/11/2006

October 2006



10/11/2006

Hughes Borehole discharge:
800 – 1,500 gallons per minute

October 2006



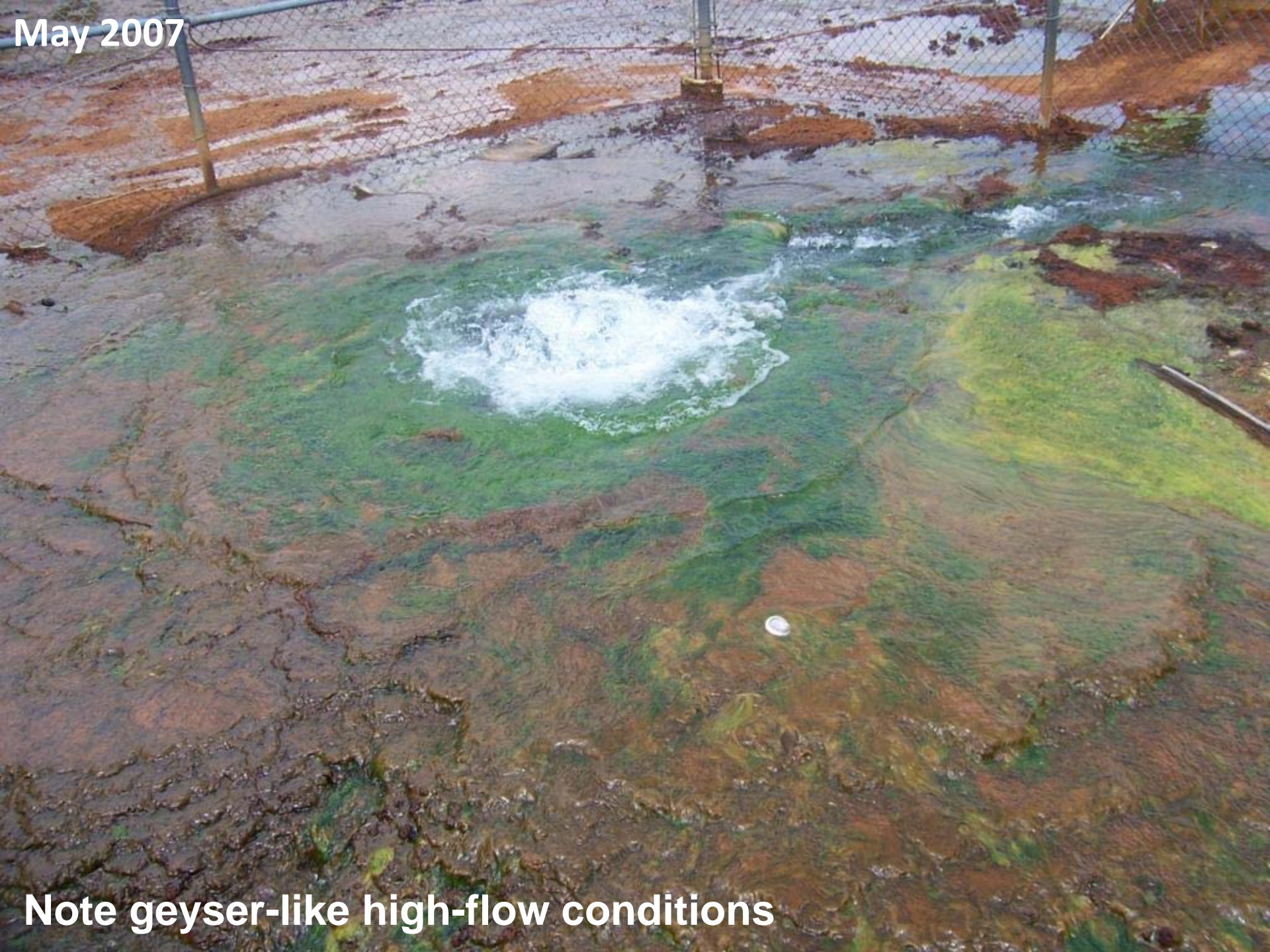
10/11/2006

October 2006

10/11/2006



May 2007



Note geyser-like high-flow conditions

May 2007



May 2007



May 2007



May 2007



December 2007



12/21/2007

December 2007



12/21/2007

December 2007



12/21/2007

December 2007

12/21/2007

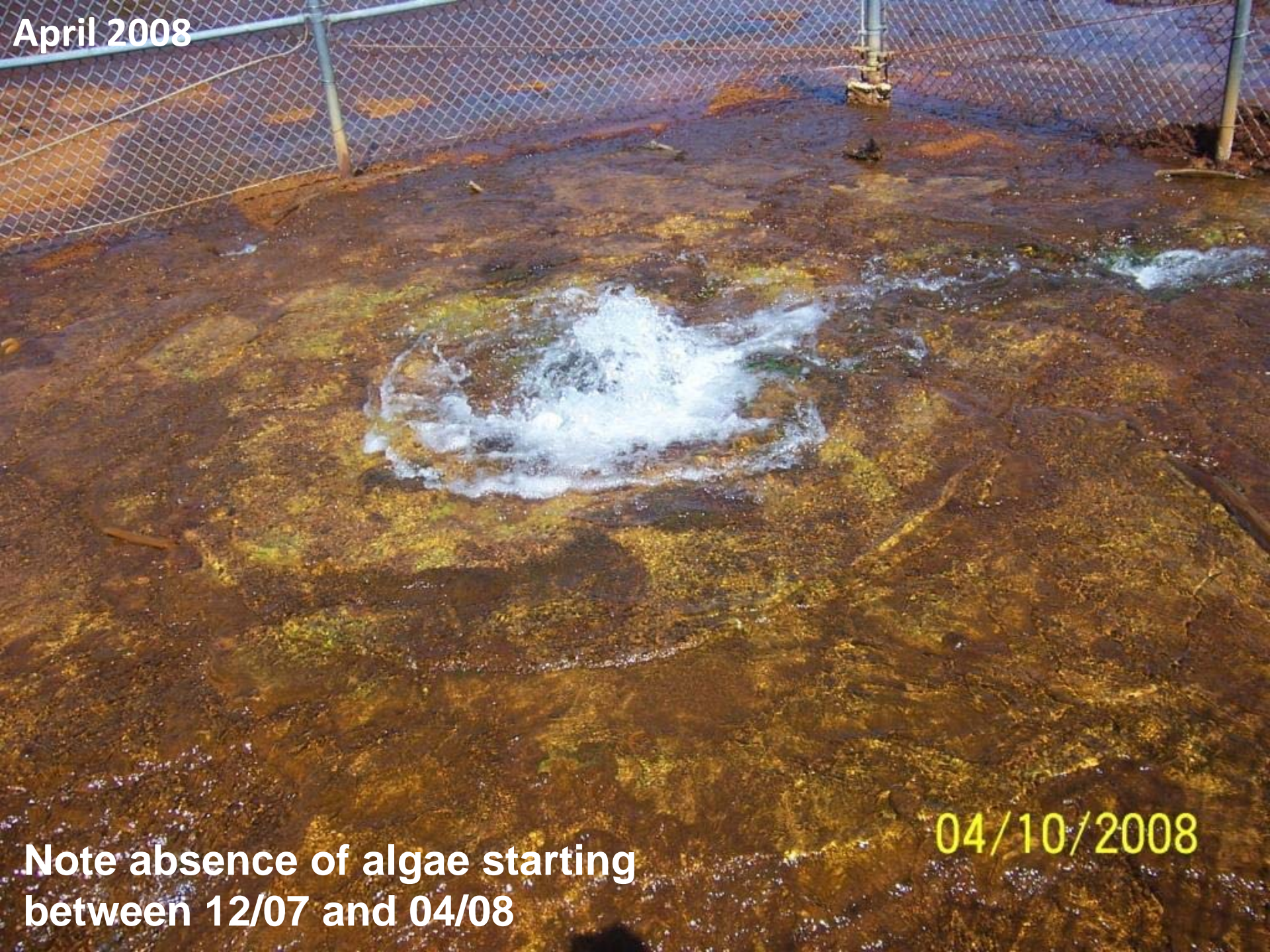


December 2007



12/21/2007

April 2008



04/10/2008

Note absence of algae starting
between 12/07 and 04/08

April 2008



04/10/2008

April 2008



04/10/2008

April 2008



04/10/2008

May 2008



05/28/2008

May 2008



05/28/2008

May 2008



05/28/2008

May 2008



05/28/2008

May 2008



05/28/2008